

# Darwin Green Community Rooms

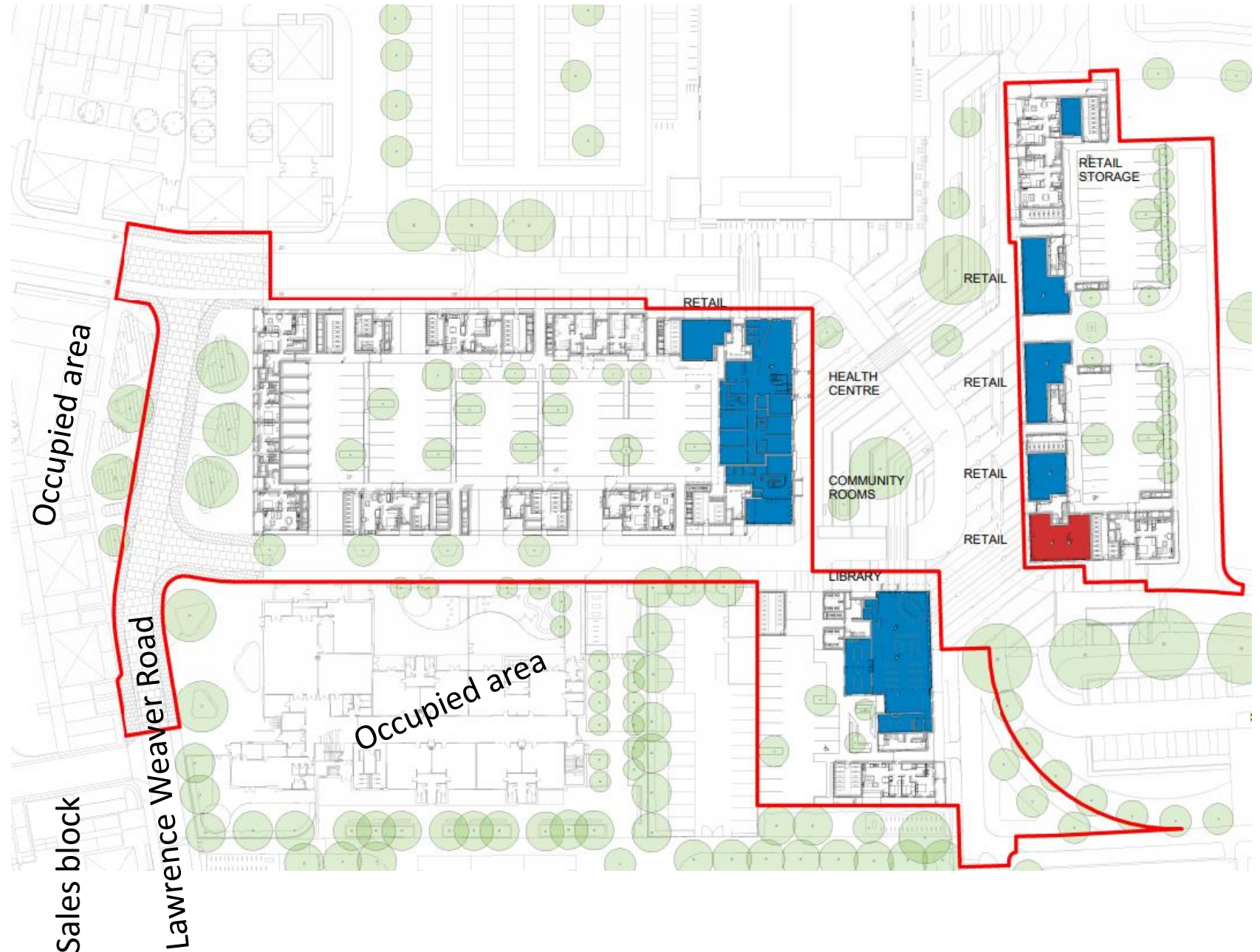


# Location:

The Community Rooms are located in a courtyard block, facing the main centre which includes health, retail and library functions

The Community rooms occupy the corner unit, Ground and 1<sup>st</sup> floor with apartments on 2<sup>nd</sup> and 3<sup>rd</sup> floor.

There are no shared entrances or lobby



# Floor plans & space: Ground Floor

## Main room: 42Sq M

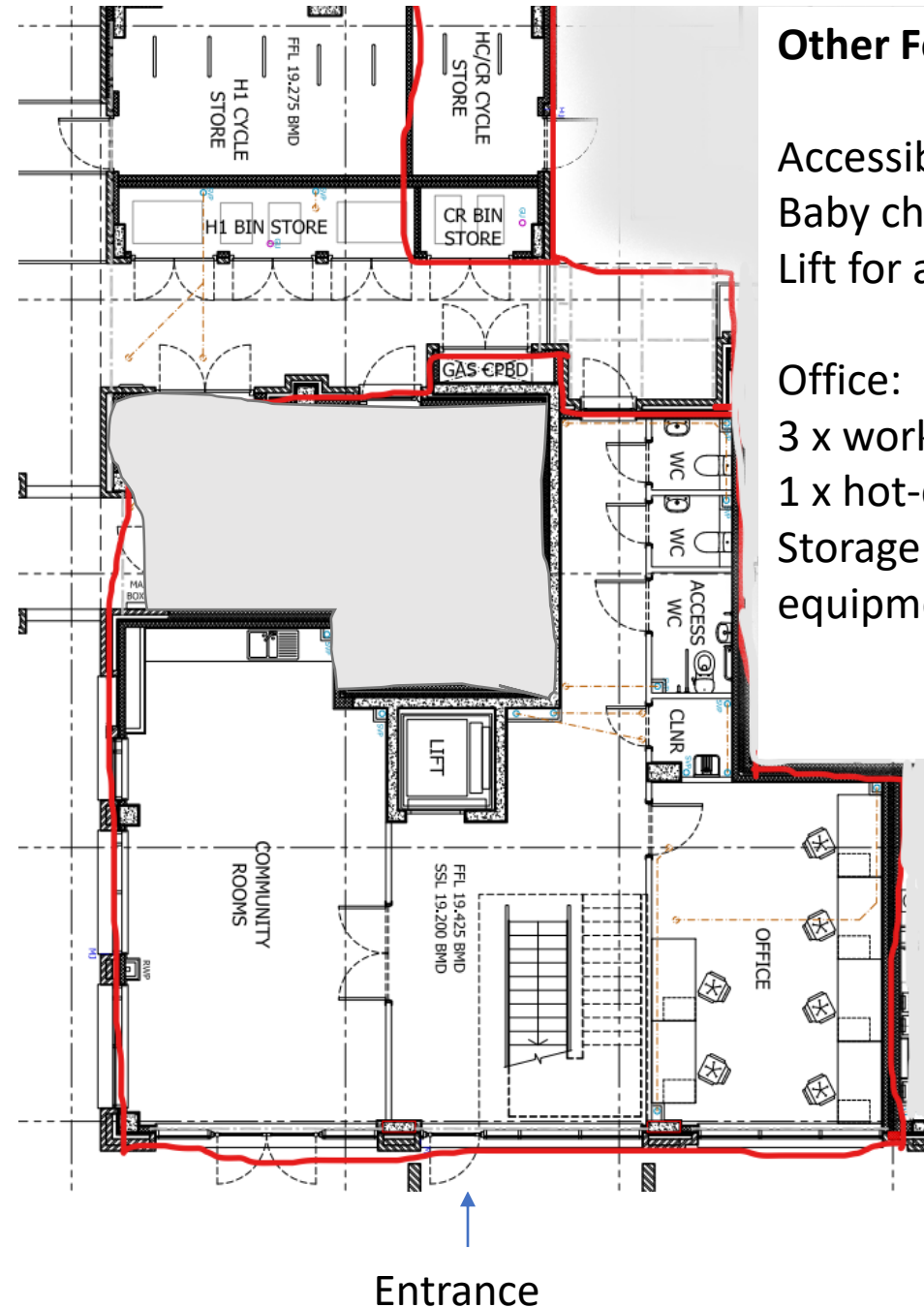
- Kitchenette with oven/microwave/sink
- Hard surface, wood effect floor
- Glazed on 2 sides
- Projector/screen
- WIFI / hearing loop

## Expected uses:

- ✓ Children + family activities
- ✓ Café / chat + natter / craft projects
- ✓ Exercise classes
- ✓ Art classes / messy activity
- ✓ Birthday parties

## Provisional Capacity:

- Fitness class – up to 15
- Seated with tables – x30
- Seated in rows – x up to 50



## Other Features:

Accessible toilet  
Baby changing  
Lift for access to 1<sup>st</sup> Fl

Office:  
3 x work stations,  
1 x hot-desk  
Storage for groups  
equipment

# Floor plans & space: First Floor

## Upper room: 52Sq M

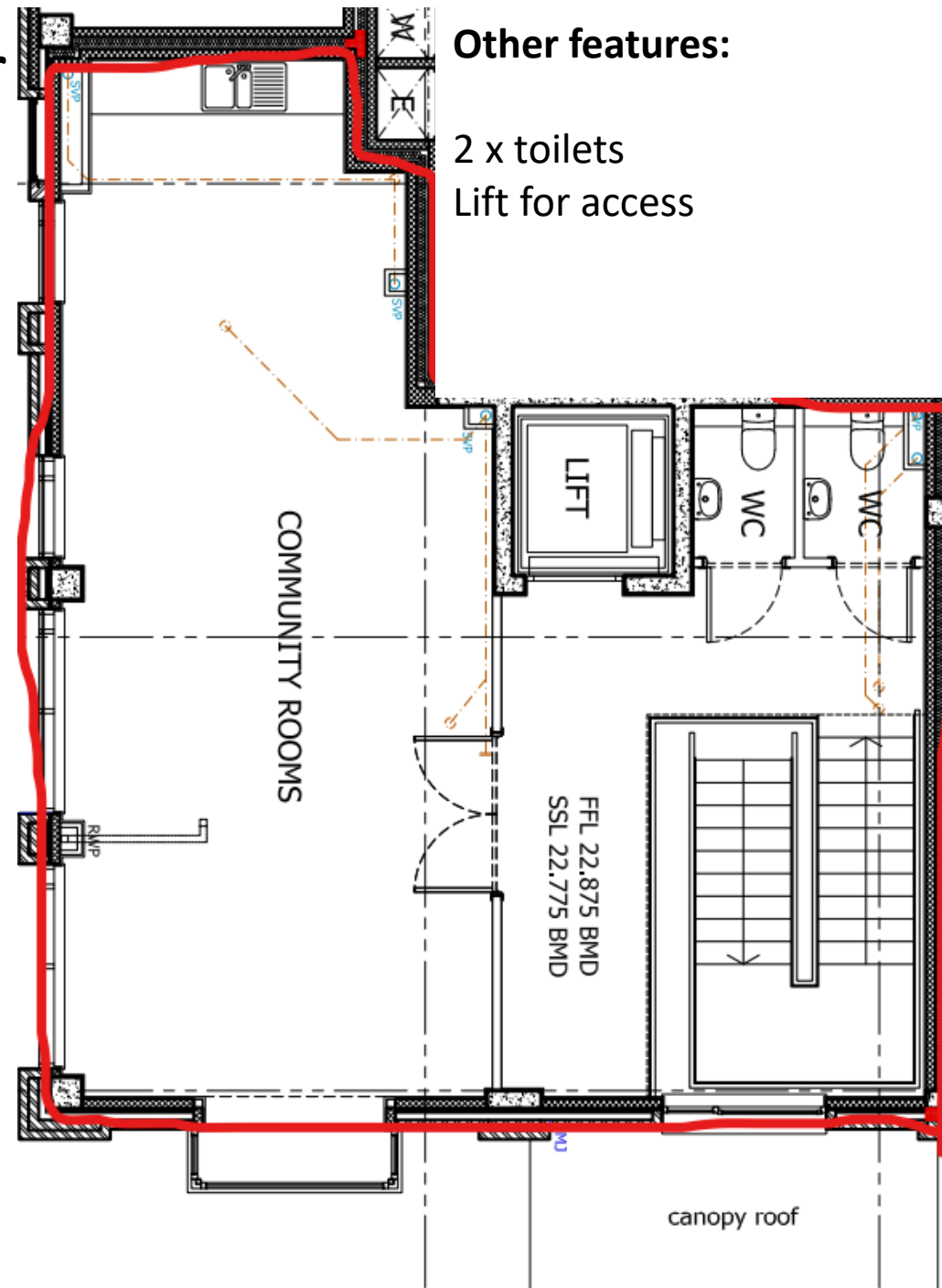
- Kitchenette with sink / tea-making area
- Carpeted floor
- Glazed on 2 sides
- Projector/screen
- WIFI / hearing loop / tech to support video-conferencing

## Expected uses:

- ✓ Meetings / Workshops
- ✓ Group study / classes or lessons
- ✓ Lectures / talks / meet-ups
- ✓ Social events

## Provisional Capacity:

- Seated with tables – x 40
- Seated in rows – x up to 50





# What's new at DG

- DG Community Rooms aim to be a paperless facility, utilizing online bookings and payments where-ever possible
- Key-holder arrangements for regular users, reducing staff journeys to and from site for out of hours and weekend bookings
- DG Community Rooms have limited car-parking available and will be encouraging visits by users on foot and bicycle where-ever possible
- Hot-desking space available
- Cargo-bike hire for local residents is being explored (not yet confirmed)

*Leave the car at home and hire a cargo bike to ship the kids about or get to the supermarket. 'Try before you buy' model, hire by the day or hour*

# Timescales:

- Construction: underway Due for completion: September 2021
  - Install services / contracts: Sept – Nov
  - Furniture procurement: Underway – Arrival expected Nov
  - Fire risk assessments, site specific H&S plans etc: Sept-Nov 2021
- 
- Resident engagement: From Sept
  - Engagement with partners/hirers: From July
  - Programme development: From July
- 
- Site visits: Dec – Launch Jan (subject to lease agreements/handover/snagging complete)