

## The Marleigh (formerly Wing) Journey

Work on the first build phase of 238 houses including The Local Centre and Community Building has commenced at Marleigh in November 2019. The next planning phase for 308 homes has recently been submitted to South Cambridgeshire District Council. This short presentation has prepared to show panel members the progress we are making and to give a feel for how we are managing to maintain 'business as usual' in all aspects of the project. Some key dates are listed below

January 2019 -	Start on site (infrastructure)
August 2019 -	Phase 1a: 239 homes and local centre planning approved
March 2020 -	Sales centre opens
June 2020 -	Phase 1b planning application submitted: 308 homes and sports and allotments facilities



## Phase 1 Masterplan



## Building (in) the Community

- Working with the Council, Parishes, Ward Councillors and residents for better knowledge sharing and integration
- An Estate Strategy driven by community first, not a new community but the extension of the existing
- Focussed on social cohesion; integration with Community Development Worker
- On site Community Facilities – shops, school, nurseries, sports pavilion, community hall, allotments and vast public open spaces
- Close working with the school to ensure it fits within the development and is seen as one in terms of design, appearance and place-making.



**MARLEIGH**

Elegantly Engineered Living

## Managing in a world with Covid-19?

Construction & Production

Sales & Marketing

Aftercare & Customer Service



**MARLEIGH**

Elegantly Engineered Living



# Re-opening sites safely

- 6 weeks of no work during lockdown
- A controlled shutdown with improved security measures in place
- Easing of site opening ensuring safety of all trades and site personnel
- Testing working procedures before the re-opening of whole site





# Operating Safely on Site

- Currently c70-75% of site operatives compared to pre-lockdown levels
- Improved signage, markings, welfare, drying and cleaning facilities.
- Limited operatives working in any house/ confined space at any one time
- New Marque for providing cover during wet weather and offering 2m+ distances
- Longer working hours made available to help stagger trades on site
- No site based meetings held or Technical Staff working from site office



# Covid 19

- Sales office reopened 28<sup>th</sup> May.
- Viewing by appointment only.
- Viewing guide video produced and is sent to customers to confirm viewing protocol. <https://www.hill.co.uk/buying-from-hill/reopening-our-marketing-suites/>



## MARLEIGH

Elegantly Engineered Living

### Measures we have implemented



Online pre-booked appointment system



Limited appointments to two adults per household



Introduction of hand sanitisers  
Thorough cleaning regime after every visitor



Introduction of social distancing signage and practicing



See also: <https://vimeo.com/422909360>



## Virtual tours



### GUIDED VIRTUAL TOUR NOW AVAILABLE



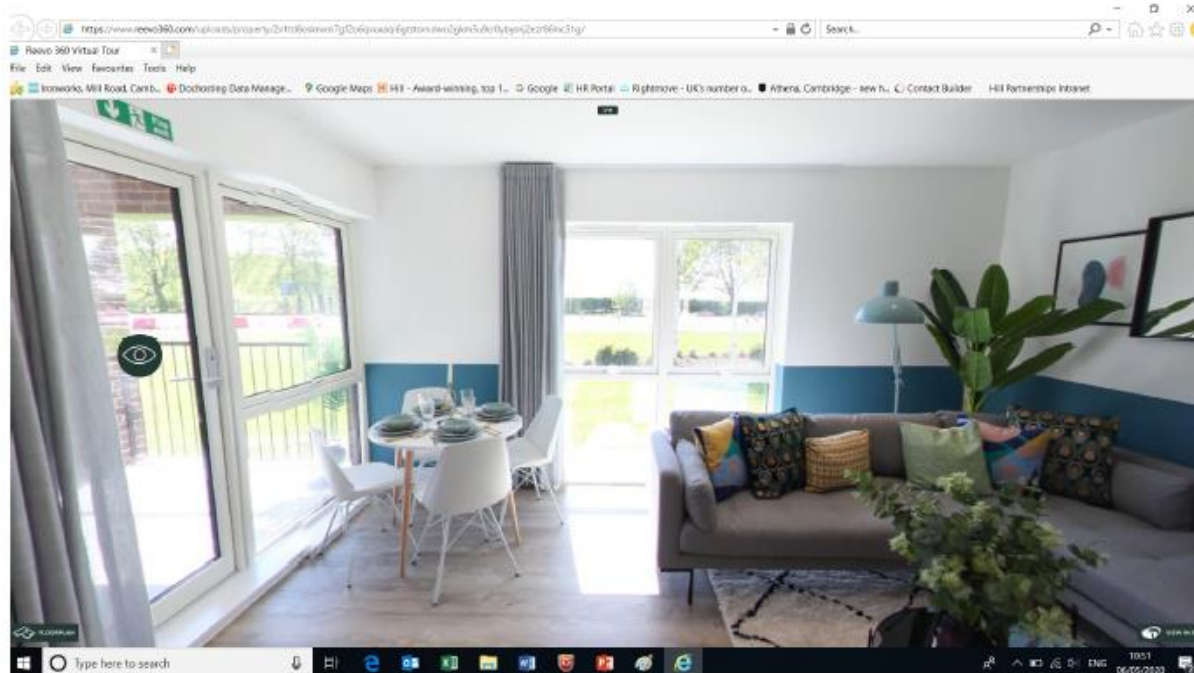
#### Allow us to show you around...

Whilst we are not able to invite you to Marleigh in person, we invite you to take a look around via a guided virtual tour so you can see exactly what our new homes at Marleigh offer.

Our new homes at Marleigh come complete with a super interior specification that includes flooring and white goods, and of course stunning kitchens and bathrooms, we create homes that are move-in ready when we hand you the keys.

We are still reserving homes at Marleigh during the lockdown, why not book your virtual tour today and let us tell you more about our new homes and this exciting new neighbourhood.

[BOOK YOUR VIRTUAL TOUR NOW](#)



The ability to show customer a finished product is vital in our industry and the virtual show home tour has been well received by our customers.

It is a procedure we will continue to operate because people are relying upon technology more and more.

The necessity to travel and to meet people means features such as these allow potential customers to make important and real time decisions.





## Site Progress Photos



**MARLEIGH**

Elegantly Engineered Living

October 2018





January 2019





January 2019





June 2020









