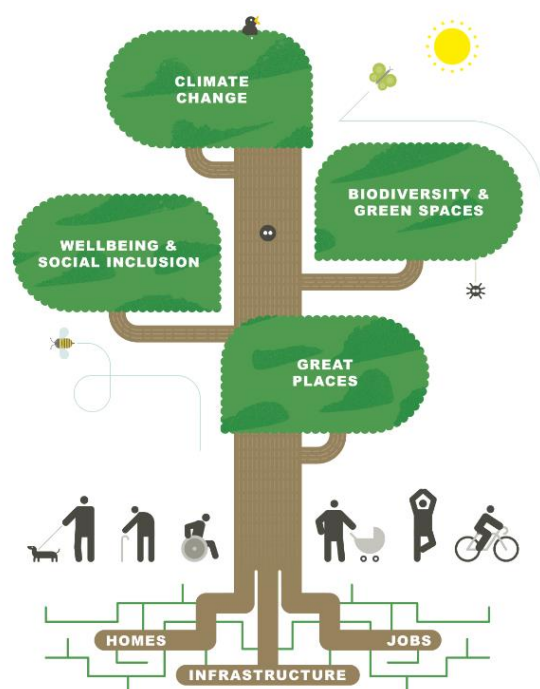


# Greater Cambridge Local Plan update



In early Autumn we will be releasing the full results of the Local Plan First Conversation consultation and Call for Sites that took place earlier this year. Over 7,000 comments and submissions were received, so it's taken the Planning Policy team quite some time to sort through them and present them in a format that everyone can understand, but we're nearly there.

The Call for Sites asked people to tell us about any land they think is suitable for development in the future, but that

doesn't mean that we will choose this land in the new Plan. Our next step is to see whether any of these sites match up with where we think we should be building, based on the feedback you gave in the consultation, and other important factors such as access to public transport and climate change. We will also be looking for other sites ourselves.

Developing the new Greater Cambridge Local Plan – our first joint Local Plan with South Cambridgeshire District Council – is a huge undertaking, and will take several years. It involves many public consultations and close working with a wide range of partners and organisations. We also commission lots of specialist studies about the local area, to form an evidence base for the Plan, on topics including climate change, water, housing and much more.

We are going to publish this evidence as it is developed so that you can read it – and we will be holding more consultations with you next year. All this and more can be explored at [www.greatercambridgeplanning.org/localplan](http://www.greatercambridgeplanning.org/localplan)

# North East Cambridge

We are about to launch a big consultation on the draft plans for a new city district in North East Cambridge. Our plans for the 182-hectare area between the Guided Busway and the A14/Milton Roundabout set new ambitions for a low-carbon, healthy new city district where everything is on your doorstep.

The vision, developed jointly with South Cambridgeshire District Council, is for an inclusive, walkable and lively mix of homes, workplaces, services, and social spaces, fully integrated with surrounding neighbourhoods. The proposals include about 8,000 new homes, (of which 40% would be affordable rent and shared ownership homes), and business space to support around 20,000 new jobs - along with shops, restaurants, and community and cultural facilities.

The plans include 3 new primary schools, 10 new and improved walking/cycling crossings around current barriers to movement like the A14 and the railway line, and a network of green spaces linking Milton Country Park to Chesterton Fen and down to Nuffield Road. They have been developed over several years with ongoing input from a forum representing a range of resident and community groups local to the site.

You can find out more and comment online at [www.greatercambridgeplanning.org/nec](http://www.greatercambridgeplanning.org/nec) and the consultation is open from 9am on 27<sup>th</sup> July to 5pm on 5<sup>th</sup> October.

