

2020 Leader's Briefing for Cambridge residents and organisations

Councillor Lewis Herbert
Leader of Cambridge City Council
Friday 17 January 2020



Five Council Priorities

1. Tackling Poverty and Inequality to create “One Cambridge Fair for All”
2. Cutting Homelessness and Investing in Housing
3. Action on the Climate Emergency and Biodiversity, including a Net Zero Cambridge
4. Increasing Community Safety
5. Planning and Transport Delivery for the Future

Firstly, a big THANKYOU to our funders!

- £9m to be raised in Council Tax in 2020/21
- £4.4m in retained Business Rates, out of £110m+
- £4.9m in New Home Bonus
(but that will shrink to £0 in 2024)
- Over 60% is generated from fees & charges,
plus growing property and investment income
- And no core Government grant since 2019

Where does your Council Tax go?

- 11% goes to the City Council
 - an average of £200 per household or £4 per week for Council services (and 2.5% £5 typical increase in 2020/21)
- 73% to County Council - average <£1400
- 12% to Cambs Police
- 4% to Fire and Rescue

Keeping our finances in balance

- Second round of transformation and service reviews
- Wins for council and customers by improving how we log issues and respond
- Significant investment underway in our assets, seeking social & financial returns
- More partnership working
- Self reliance

Our city of considerable magic is also ... a tale of two cities



Population qualified
to Level 2 or higher

South Cambs
84.8%

Cambridge
83.2%

UK
74.9%



Cambridge population aged 65 or over

12.8% IN 2018 → **18.2%** IN 2041

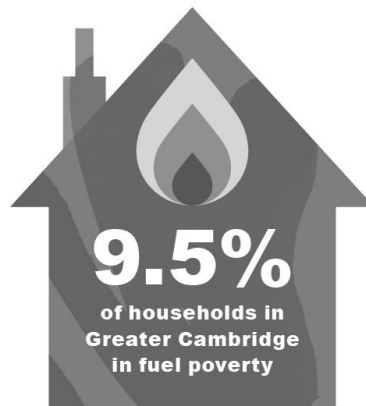
South Cambs population aged 65 or over

19.4% IN 2018 → **26.5%** IN 2041



10 YEARS

The difference in life
expectancy between
the least and most
deprived parts of
Greater Cambridge



9.5%
of households in
Greater Cambridge
in fuel poverty



Multiple Deprivation
Index (out of 317
local authorities)

16th
South Cambs
107th
Cambridge

1. Tackling poverty and inequality

- Focus on incomes and expansion of the Real Living Wage of at least £9.30/hour
- £1m in targeted community organisation grants – to help Cambridge people in most need. And help grow “Cambridge 2030” partnership
- 4 year food and child poverty strategy and a new Food Hub in 2020
- Addressing inequality faced by women, and the disabled and other groups facing discrimination

Creating a new Cambridge Food Hub



Expanding unused food supply to Cambridge foodbank, projects and homeless organisations.

How can residents & groups help us tackle poverty and inequality?

- Persuade businesses you buy from and employers you know pay the Real Living Wage of £9.30/hr+ and become accredited
- Donate to local charities or choose a local 'charity of the year' like Street Aid
- Recruit volunteers (and lighten the load)
- Identify community opportunities for apprenticeships & build links with schools

Adopting the Real Living Wage

- Helps tackle in-work poverty by paying all employees at least the Real Living Wage and becoming accredited.



- To make a bigger impact, Cambridge City Council pays all your employees at least £10 per hour



Raise funds for a local charity and develop projects they can fund

- Do you have a favoured local charity that supports people needing help?
Could you help raise funds?

- For instance via



- Or  Localgiving

Learn more about volunteering and building community groups

- Contact www.cambridgecvs.org.uk



Link up with inspiring organisations

- e.g. Form the Future help local young people identify their career options



FORM THE FUTURE

- More from info@formthefuture.org.uk

2. Building Affordable Homes

120,790 homes in Greater Cambridge today



Average house prices (2018)



Median monthly cost to rent a 2 bed house



Lower quartile house price to income ratio

2. Cutting Homelessness & Investing in Housing

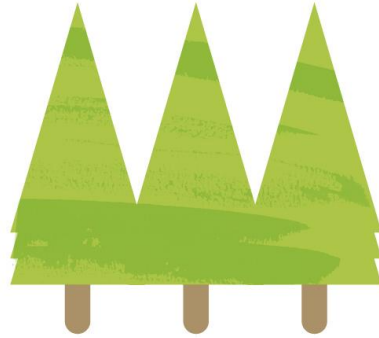
- Building over 500 extra Council Homes, and beginning work to plan for up to a further 1000 with even more ambition low carbon design
- Achieving 40% affordable in new developments including 30% at affordable rents
- Working with private sector landlords
- Support for rough sleepers incl £700,000 for Jimmy's and Winter Comfort and front-line orgs
- Housing First schemes for homeless people, + supporting Allia and 20 additional homes

Example of Cromwell Road site, Romsey



295 new homes including 118 council homes, plus a nursery and a great new public space.

Increasing biodiversity and green spaces



43 ancient woodland sites



**11% tree coverage in
Greater Cambridge**



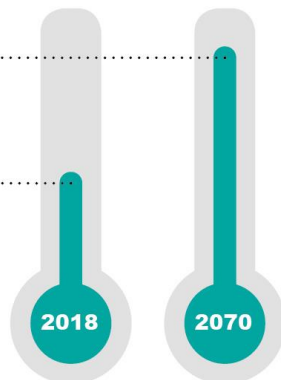
Council adding 2000 extra trees in public realm in next 3 years, developing major edge of Cambridge projects via the Local Plan, and doubling wildflower meadows

3. Tackling the Climate Emergency

Winter

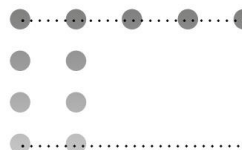
+4.2°C

Temperature
increase
by 2070



Rainfall
increase
by 2070

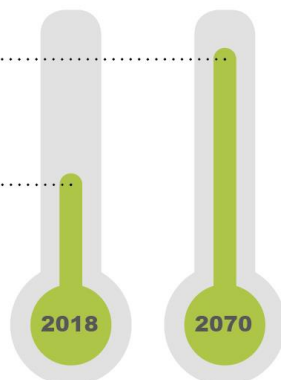
+35%



Summer

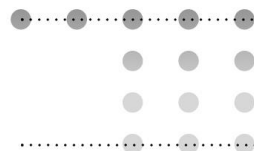
+5.4°C

Temperature
increase
by 2070

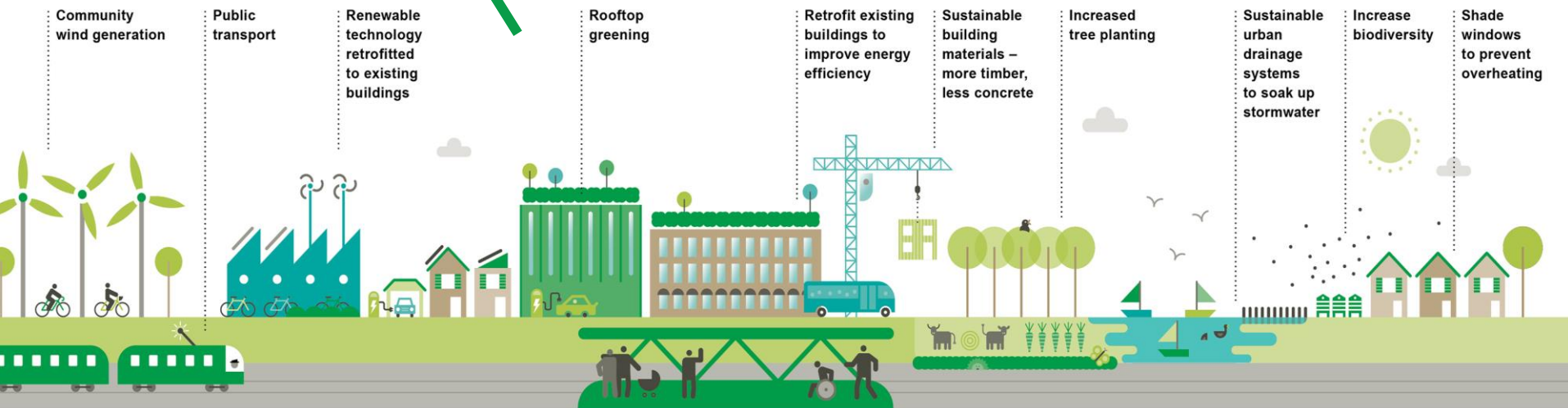


Rainfall
decrease
by 2070

-47%



How can we mitigate and adapt to climate change?



Mitigation = reducing our impact on the climate as far as possible

Adaptation = ensuring that our communities can evolve as our climate changes

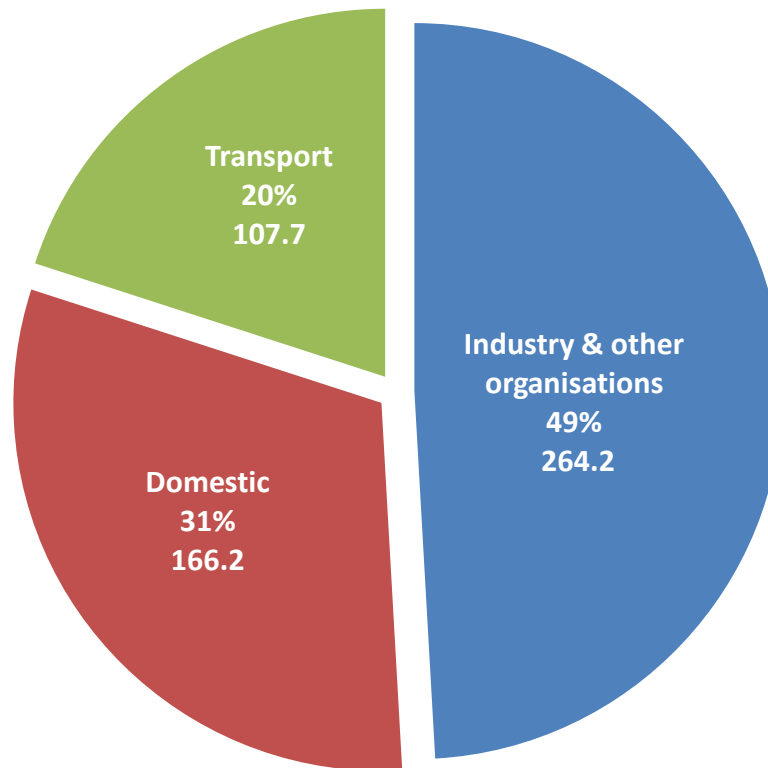
3. Council action on Climate Change Emergency

- £1.4m invested to cut Council emissions by 25% since 2015
- Bigger amount to be invested in cutting council housing emissions
- New partnership with businesses, organisations and households incl Cambridge Climate Charter
- Planning electric vehicle charging network in our car parks

In addition to £600k electric taxi charging scheme and first 2 electric buses



We need all households and organisations to take action to achieve Net Zero Carbon



Cutting your carbon emissions

- Quantify your climate impacts from energy consumption and transport use
- Shift local journeys from cars
- Cut flights
- Eat 90%+ local food and less meat
- Cut the fuel and bills needed to live comfortably at home
(and do all this at work too)

Where can I get help?

- Cambridge City Council
- The Carbon Trust www.carbontrust.com
- Peterborough Environment City Trust
- www.pect.org.uk



PECT

CREATING SUSTAINABLE PLACES



Greening your organisation and home (1)

- Reduce energy usage e.g. through insulation, new heating controls or installing renewables on your property
- Switch to a 100% renewable energy tariff
- Install smart meters / energy management system to better monitor your energy consumption

Greening your organisation/home (2)

- Review your transport options – consider electric or hybrid vehicles, or cycle couriers;
- Consider your material inputs and your waste: REDUCE, REUSE, RECYCLE;
- Explore bulk procurement options.

Benefits

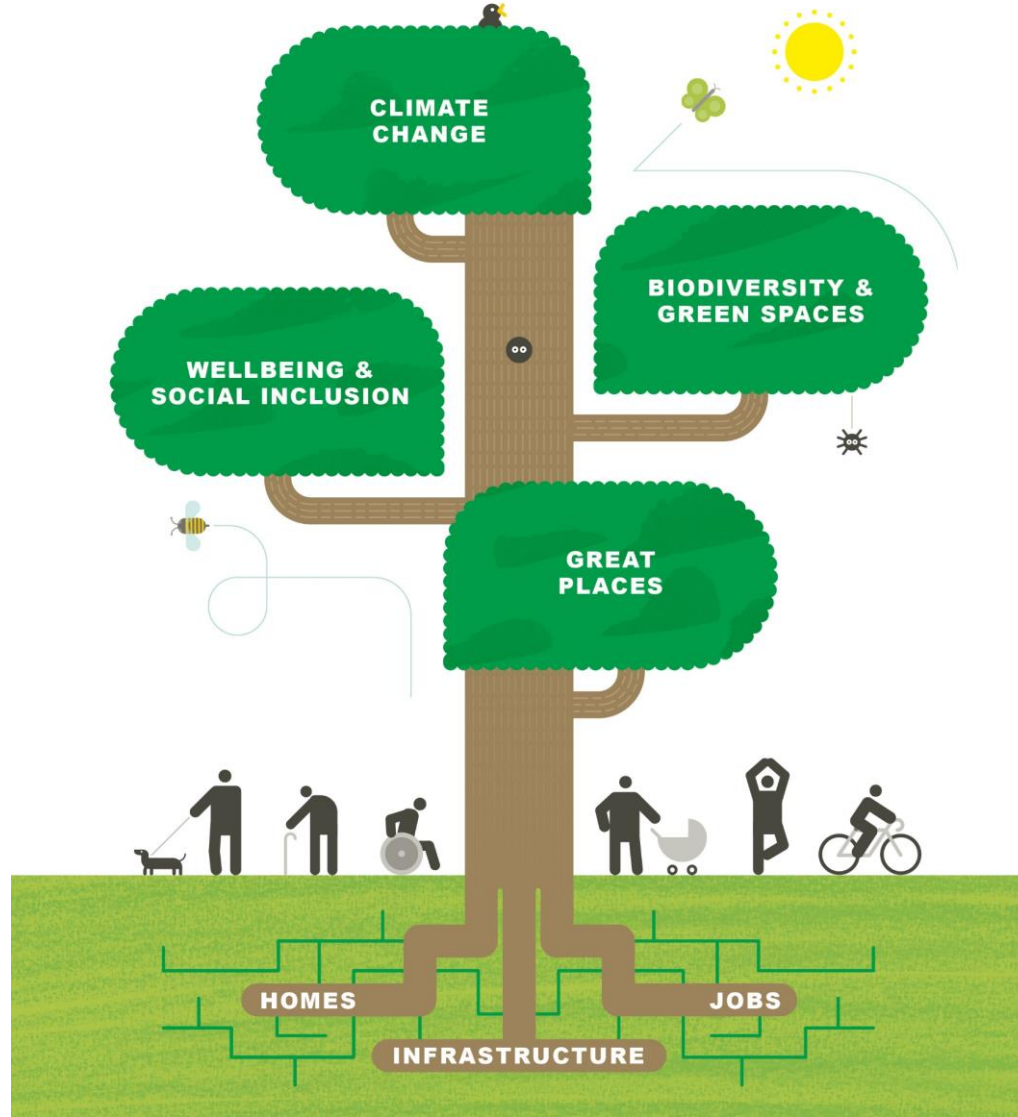
- Reducing your organisation's and your own carbon footprint + match your stakeholders' values;
- Reduce costs by reducing energy and materials consumption;
- Future-proofing against future policy changes;



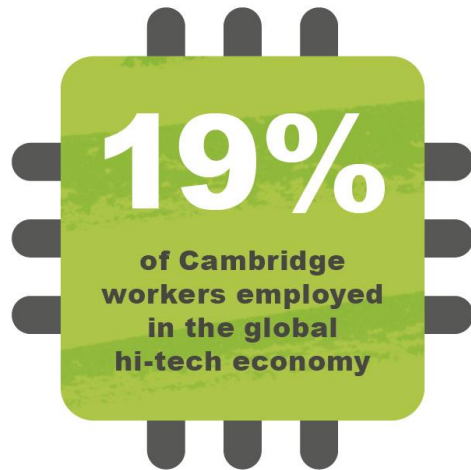
4. Increasing Community Safety

- Building on the strong partnership with local police, council, community and businesses including CAMBAC
- Retaining an effective Parkside Police Station
- Targeting violent drug dealers and protecting our young people
- Adding anti-terrorism barrier on King's Parade

5.Planning for the Future: Greater Cambridge Joint Local Plan consultation starts today

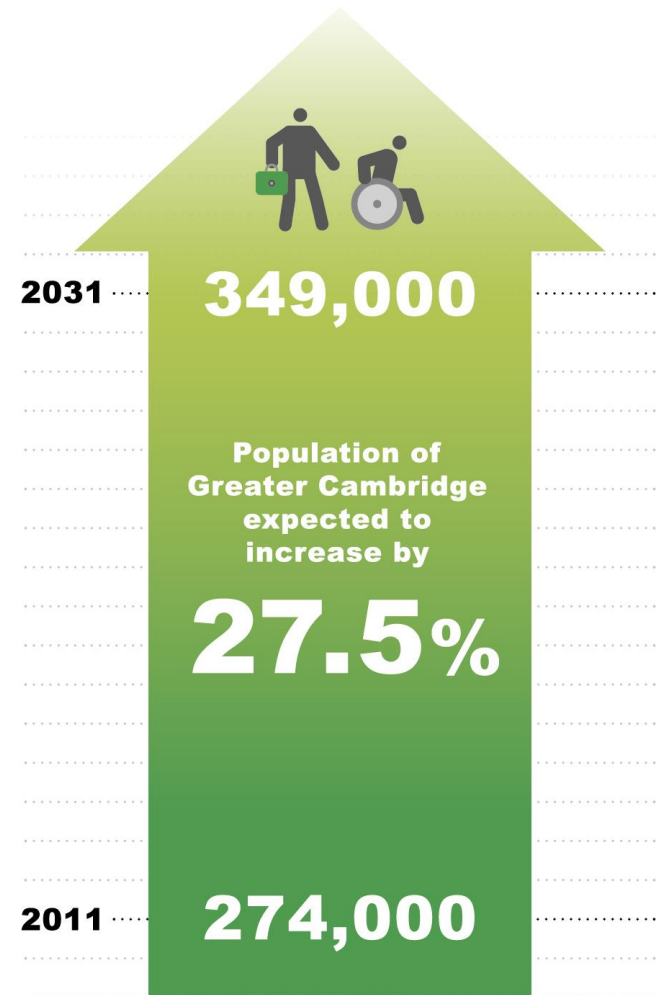


Economic Growth



(30% were visiting friends and family locally.
Only 12% explored beyond Cambridge.)

Planning for Greater Cambridge



Learning from the best - 5Cs and Cambridgeshire Quality Charter

- Connectivity (location, location, location)
- Character both in built form & environment
- Climate and biodiversity
- Community and Cohesion including health
- which are arguably the toughest nuts to crack



Learning from places like Marmalade Lane - Character



Learning from places like Marmalade Lane - Climate



Learning from places like Marmalade Lane - Community



Please help us spread the word:

www.greatercambridgeplanning.org

#GCLocalPlan



Winning Infrastructure Funding

202,155

vehicles cross the outer
boundary of Cambridge in
either direction every day



22%

of South Cambs residents within
30 mins of walking or public
transport access of a town centre

40%

of people who work in the
City live in Cambridge.
28% live in South Cambs

50%

of Cambridge residents
cycle at least once a week –
the highest in England

25%

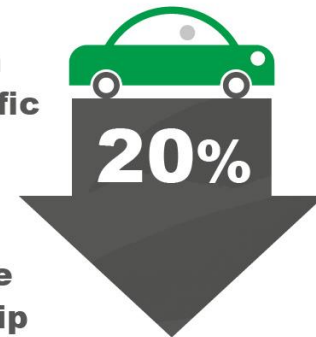
of South Cambs residents
cycle at least once a week –
the 5th highest in England

Electricity
capacity
needs to
triple to
support
economic
growth



9 new schools
have been built in
Greater Cambridge
in last 10 years.
Another 5 are
planned.

Reduction
in car traffic
planned
by the
Greater
Cambridge
Partnership

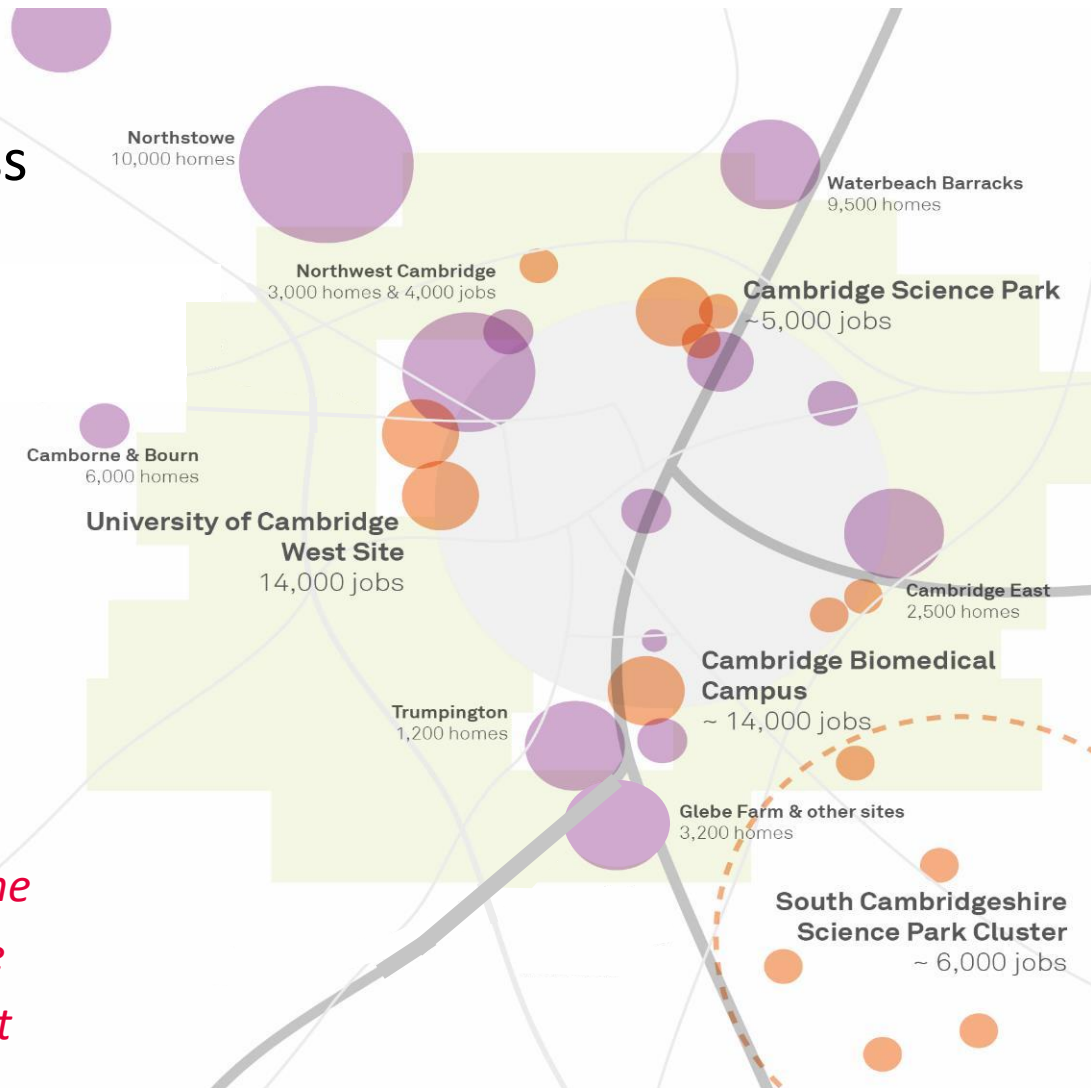


Matching Growth with Transport Investment

- 44,000 new jobs and 33,500 new homes – dispersed across Greater Cambridge.
- 188,000 jobs in Greater Cambridge (2018), up from 177,000 (2015)

CPIER Recommendation #7

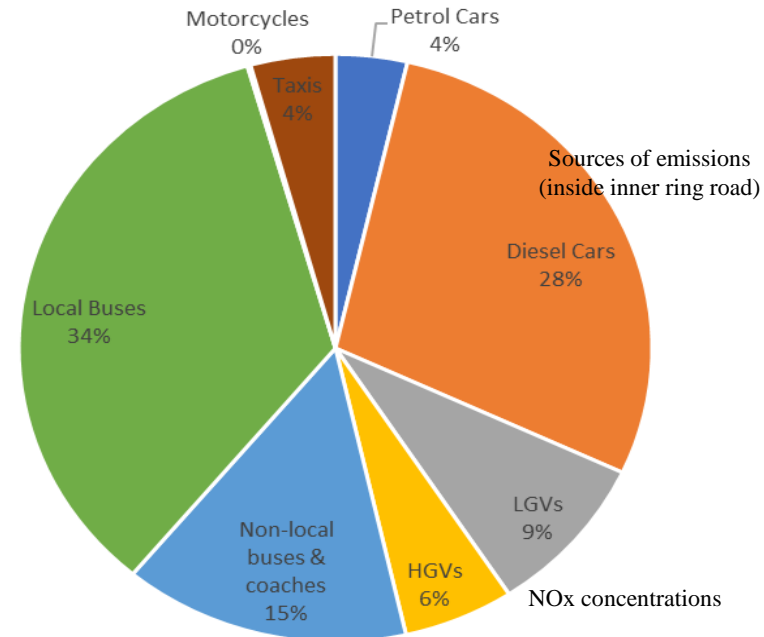
“A package of transport and other infrastructure projects to alleviate the growing pains of Greater Cambridge should be considered the single most important infrastructure priority [...] in the short to medium term”.



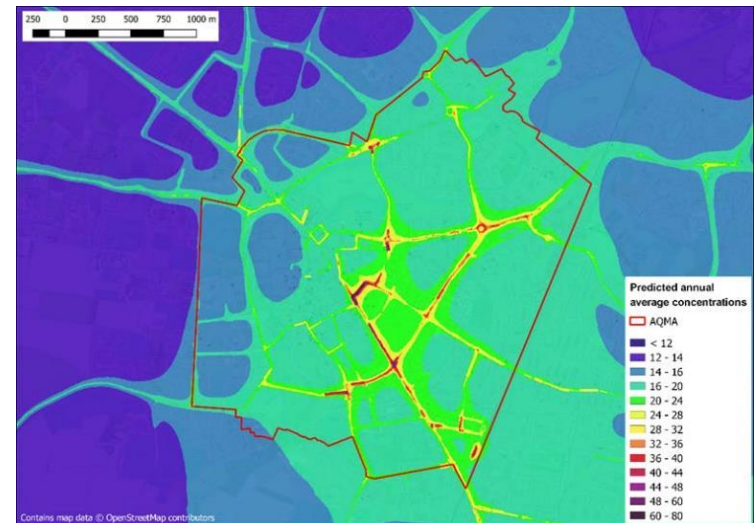
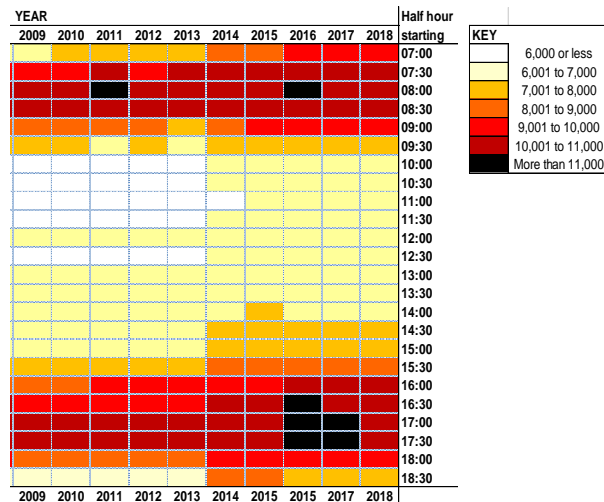
Improving air quality

Significantly strengthened evidence base on air quality and impact

- 106 deaths each year in Greater Cambridge are attributable to poor air quality. Significant health impacts especially in vulnerable people.
- Road traffic is the main source of emissions, particularly buses and diesel cars
- 2017 concentrations remain above the national standard for NC in:
 - Drummer and Emmanuel Street, Sections of Regent street and St Andrews St
 - Gonville Place-Hills Road Junction, and Victoria Avenue, Fen Causeway & Lensfield Road



Hourly traffic levels 2009-2018



What has the Greater Cambridge Partnership achieved?

Over **50,000** responses to more than 30 consultations



The GCP is focused on delivering transformative transport infrastructure. Spend throughout Tranche 1 has focused on the development phases of various major transport infrastructure interventions, as well as delivering a range of quick wins and improvements to enhance existing transport networks.

150 miles of new segregated 'Greenways' cycleway



The GCP has delivered six improved cycle routes to enhance the cycle network across Greater Cambridge. The early evidence from SQW's impact assessment of three of these schemes indicate that GCP interventions will have a significant long-term effect on cycling uptake. It observed a 12% increase in cycling, equating to 1,150 extra cycle trips per week.

Held the **first** Citizens' Assembly on transport and air quality



The GCP have invested in a range of interventions to improve the local skills system, including the new Greater Cambridge Apprenticeship Service.

670 apprenticeships were completed in key local growth sectors in the period (from 2015/16 up to Q3 2018/19).

Undertook one of the UK's **largest** ANPR studies of city traffic



The GCP Smart workstream reinforces the successful delivery of transport interventions. It has delivered 17 smart travel panels and totems at strategically important locations across Greater Cambridge.

670 apprenticeships completed in growth sectors



Accelerated delivery of **33,500** homes



City Deal investment, including interventions on housing and strategic planning, secures the accelerated delivery of 33,500 homes across Greater Cambridge. This is essential for the sustainable growth of the local economy.

50 miles of new high quality public transport routes



Evidence indicates that investment by local partners to remove parking charges from all Park & Ride car parks in Greater Cambridge has increased usage by approx. 11%.

A key pillar of the GCP's transport strategy is the ability for interventions to generate modal shift, increasing the uptake of active travel and public transport options to alleviate congestion and improve air quality. To this end, we're delivering over 10,000 additional Park & Ride spaces to add to existing provision.

12% increase in cycling generated to date



To deliver an improved transport offer that meets our environmental responsibilities, the GCP is greening the transport network, with extra cycle parking and electric charging points.

300 extra cycle parking spaces



Electric bus trials launched



11% increase in Park and Ride usage



Developed a **bespoke** Travel App



Developing a **joint** Local Plan for Greater Cambridge



£3.65 leveraged for every £1 spent on Smart



The delivery of GCP interventions and the confidence generated amongst key stakeholders by the GCP's Future Investment Strategy secures the creation of 44,000 new jobs within Greater Cambridge.

Secured **44,000** new jobs



Planned transport investments, including potential for CAM Metro

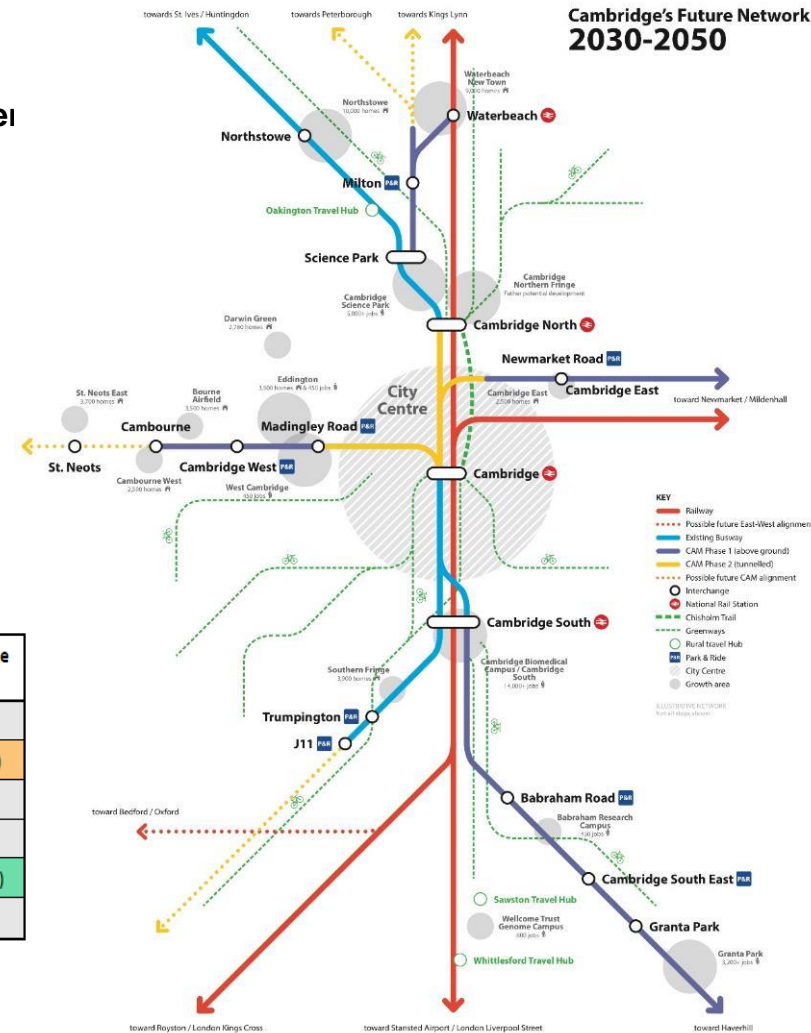
Arup analysis of competitiveness of public transport for key commuter routes (published December 2018)

Now

From/To	Cambridge CC	Addenbrooke's Hospital / CBC	Cambridge Science Park	Cambridge Airport	Cambridge West	Cambridge Station
North West Cambridge	-37%	-5%	-4%	-5%	-20%	-15%
Cambourne	19%	40%	55%	44%	36%	28%
Trumpington	0%	-11%	39%	56%	24%	14%
East Cambridge	-25%	24%	4%	-57%	30%	4%
Waterbeach	30%	42%	53%	88%	53%	7%
Northstowe	2%	12%	16%	19%	8%	14%

1. With CAM phase 1 routes

From/To	Cambridge City Centre	Addenbrooke's Hospital / CBC	Cambridge Science Park	Cambridge Airport	Cambridge West	Cambridge Station
North West Cambridge						
Cambourne	-18% (-37%)	13% (-26%)	26% (-29%)	18% (-25%)	-3% (-38%)	7% (-21%)
Trumpington						
East Cambridge						
Waterbeach	14% (-17%)	26% (-16%)	20% (-33%)	74% (-14%)	36% (-18%)	-5% (-12%)
Northstowe			8% (-8%)			



And finally ...

- Water and the Cam
- Utilities and renewable energy
- East West Rail – via Cambourne?
- OxCam Arc – including Eastern Arc
- Combined Authority first four years delivery?

ANY QUESTIONS?

Including on our teamwork with you in creating “One Cambridge – Fair for All”

And on you and us playing our your parts in Cambridge achieving Net Zero carbon

