

Cambridge East Community Forum – Wing



South
Cambridgeshire
District Council

Outline application submitted December 2013

- Up to 1300 homes (40% affordable)
- Relocation of existing car showrooms
- Two form entry primary school and retail (secondary school provision off site)
- Food store
- Community space (health to be provided off site)
- Sport pitches, play spaces and allotments
- Application to City Council for allotments and tennis courts (not part of Wing provision)

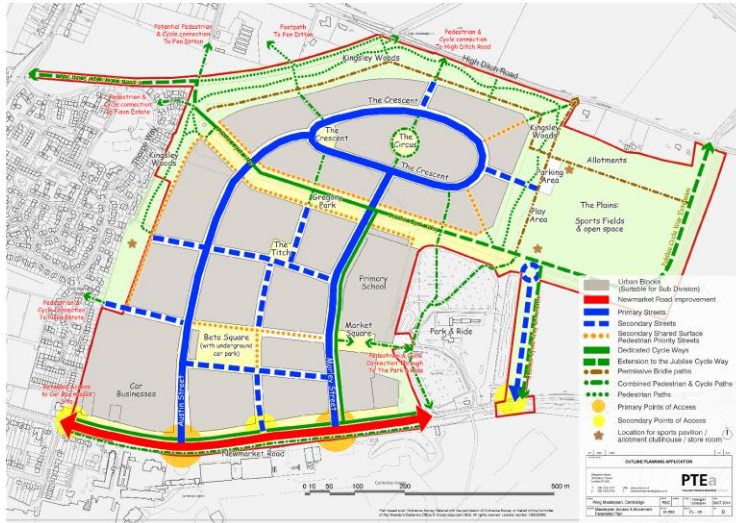


1st June 2015

Cambridge East Community Forum – Wing



South
Cambridgeshire
District Council

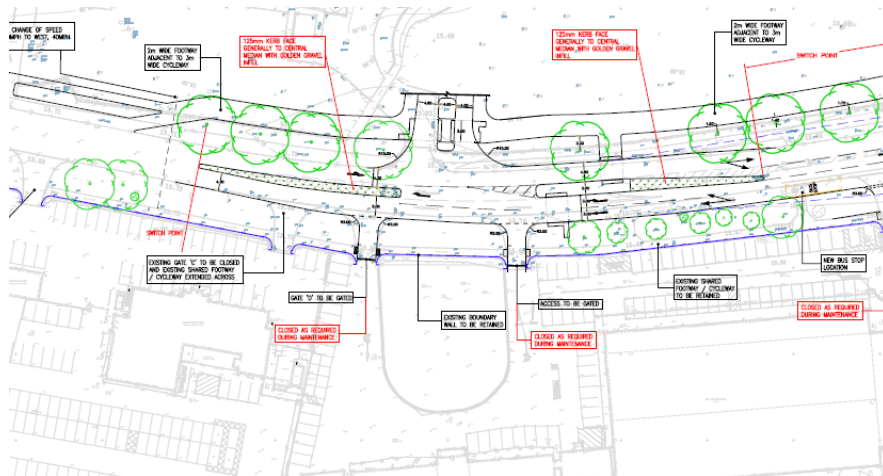


August 2014 amendments

- Bridleway relocation
- Design of Newmarket Road accesses redesigned
- Amended Environmental Statement
- Revised Public Art Strategy

On going work

- Study on impact of proposed food store being undertaken
- Viability discussions – based on the abnormal costs for relocation of existing North Works businesses



1st June 2015

Cambridge East Community Forum – Wing



South
Cambridgeshire
District Council

Section 106 draft Heads of Terms



A S106 legal agreement will accompany the planning application, which will secure some of the following:

- Off site highway infrastructure works – improvements to junctions, cycle routes etc. based on the Transport Assessment and modelling
- Percentage and split of affordable housing, which is being considered as part of the viability discussions
- Payments towards health and education provision in the area
- Maintenance of open space and sports pitches across the site

Cambridge East Community Forum – Wing

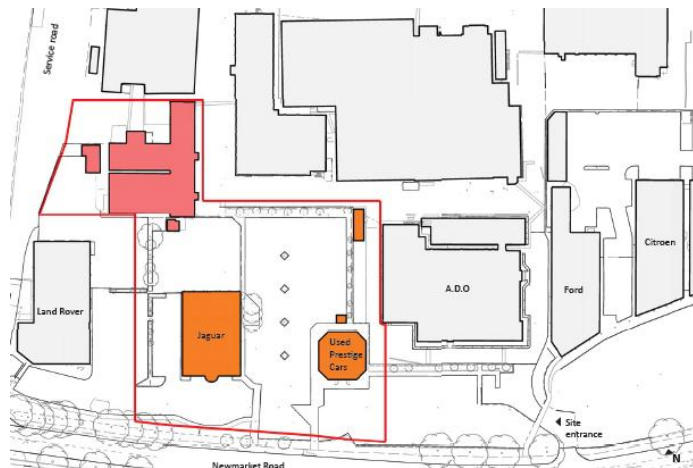


South
Cambridgeshire
District Council



Early enabling works

- First phase of development likely to require early demolition of existing Peugeot building
- Applications already submitted for temporary car showroom facilities and change of uses
- Further applications to be submitted for new showrooms



1st June 2015