

Marshall Aerospace and Defence Group Proposed Engine Testing Facility

Marshall



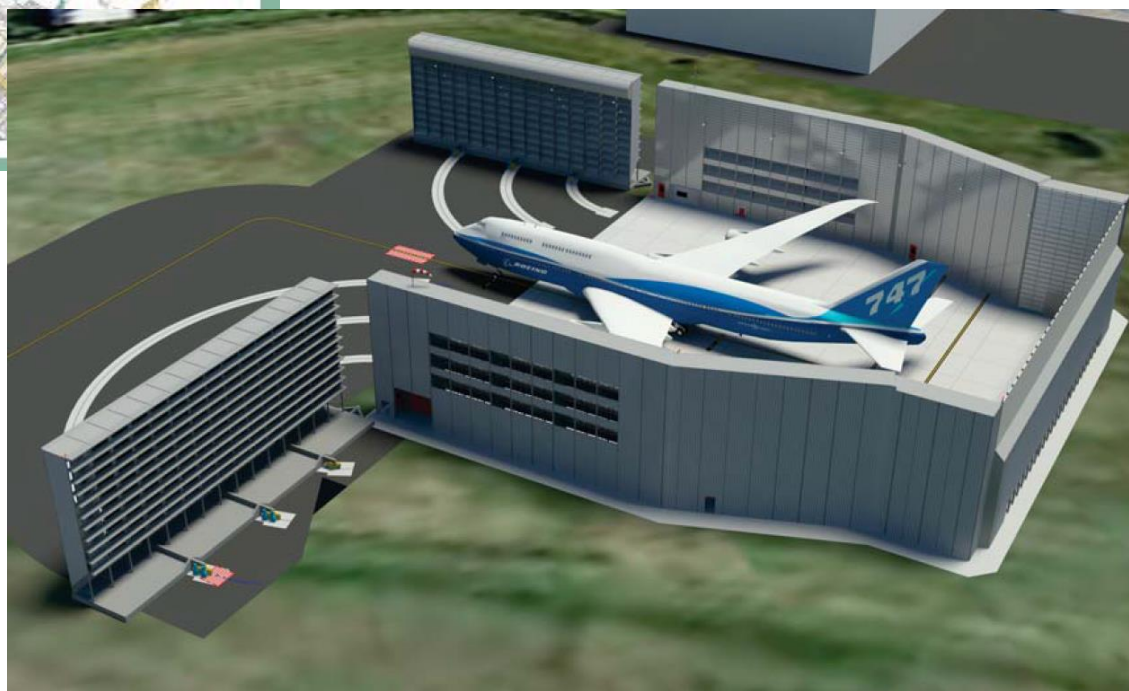
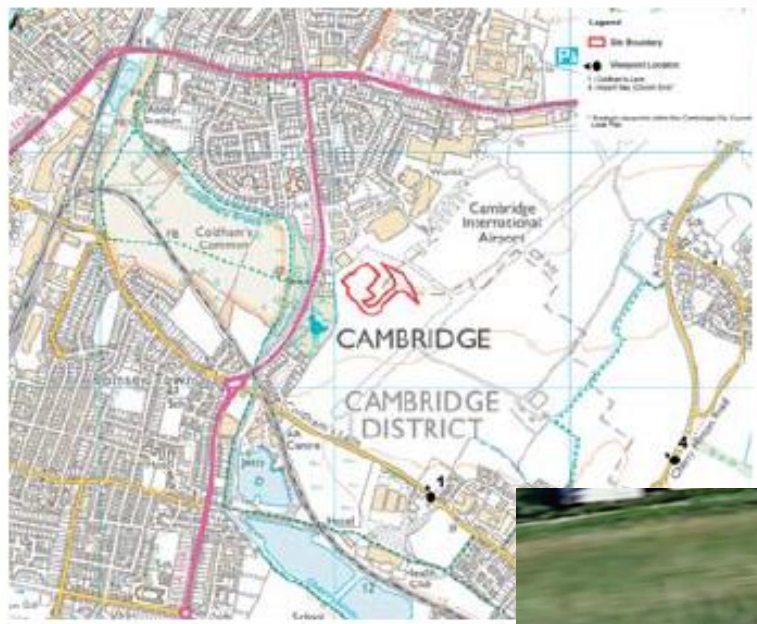


Existing engine testing locations



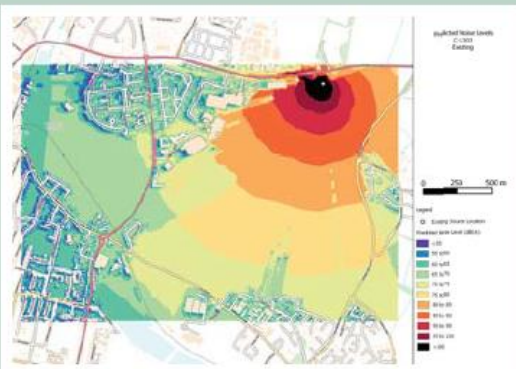
Existing engine run-up bay

Marshall





C-130J Noise Levels

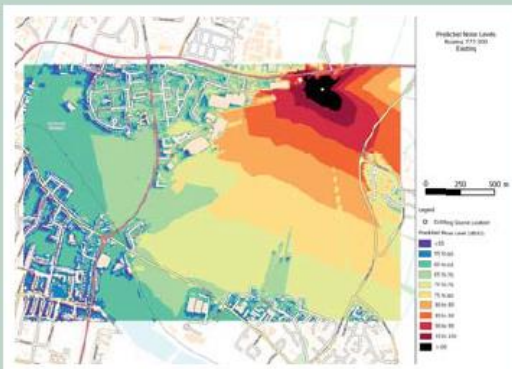


Existing

>60 dB(A) 27,000 people
 >70 dB(A) 2,120 people
 >80 dB(A) 60 people
 Abbey Meadows School 70 dB(A)
 Teversham School 85 dB(A)

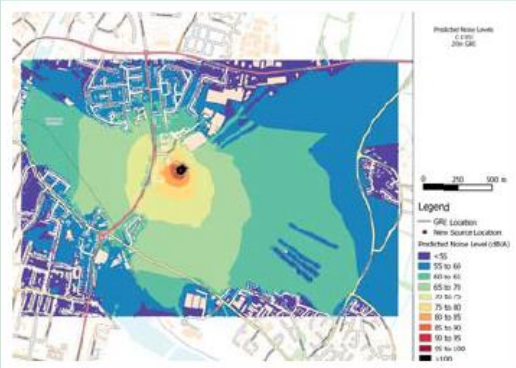


B777-300ER Noise Levels



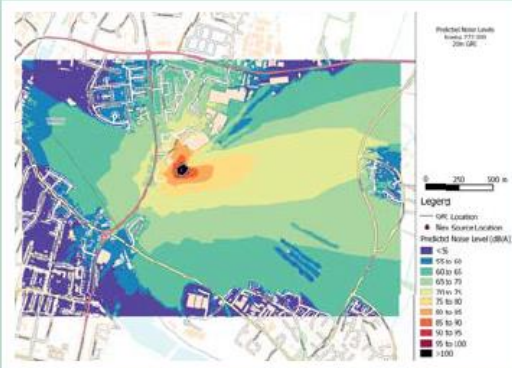
Existing

>60 dB(A) 14,780 people
 >70 dB(A) 1,825 people
 >80 dB(A) 125 people
 Abbey Meadows School 70 dB(A)
 Teversham School 90 dB(A)



Proposed (20m)

>60 dB(A) 2,866 people
 >70 dB(A) 75 people
 >80 dB(A) 0 people
 Abbey Meadows School 70 dB(A)
 Teversham School 59 dB(A)



Proposed (20m)

>60 dB(A) 4,515 people
 >70 dB(A) 204 people
 >80 dB(A) 0 people
 Abbey Meadows School 70 dB(A)
 Teversham School 71 dB(A)

Predicted noise levels at key locations (dB)

Name	Existing ERUB		20m GRE	
	C-130J	B777	C-130J	B777
Braybrooke Place	77	74	64	62
Teversham Drift	75	74	60	61
Nuttings Road	69	66	73	71
Abbey Meadows Primary School	70	70	70	70
Teversham Primary School	85	90	59	71
Coldham's Common	68	66	68	66
Stourbridge Grove	68	65	64	63
Peverol Road	73	73	62	69
Wing Development Site	96	97	48	52

Orange box: Increase in noise levels compared to today

Green box: Decrease or no change in noise levels compared to today



Marshall

Marshall Aerospace and Defence Group Proposed Engine Testing Facility

Marshall

