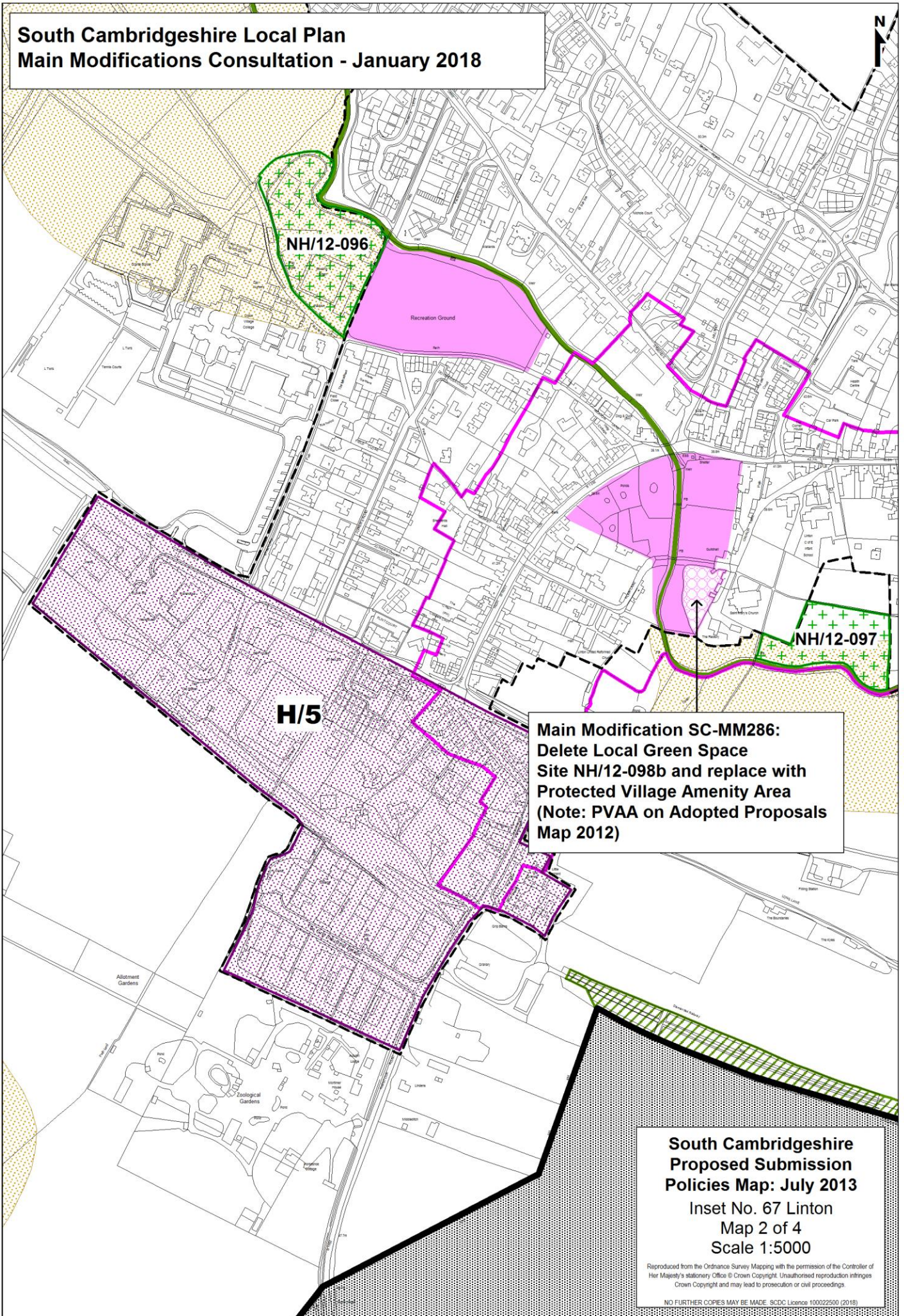
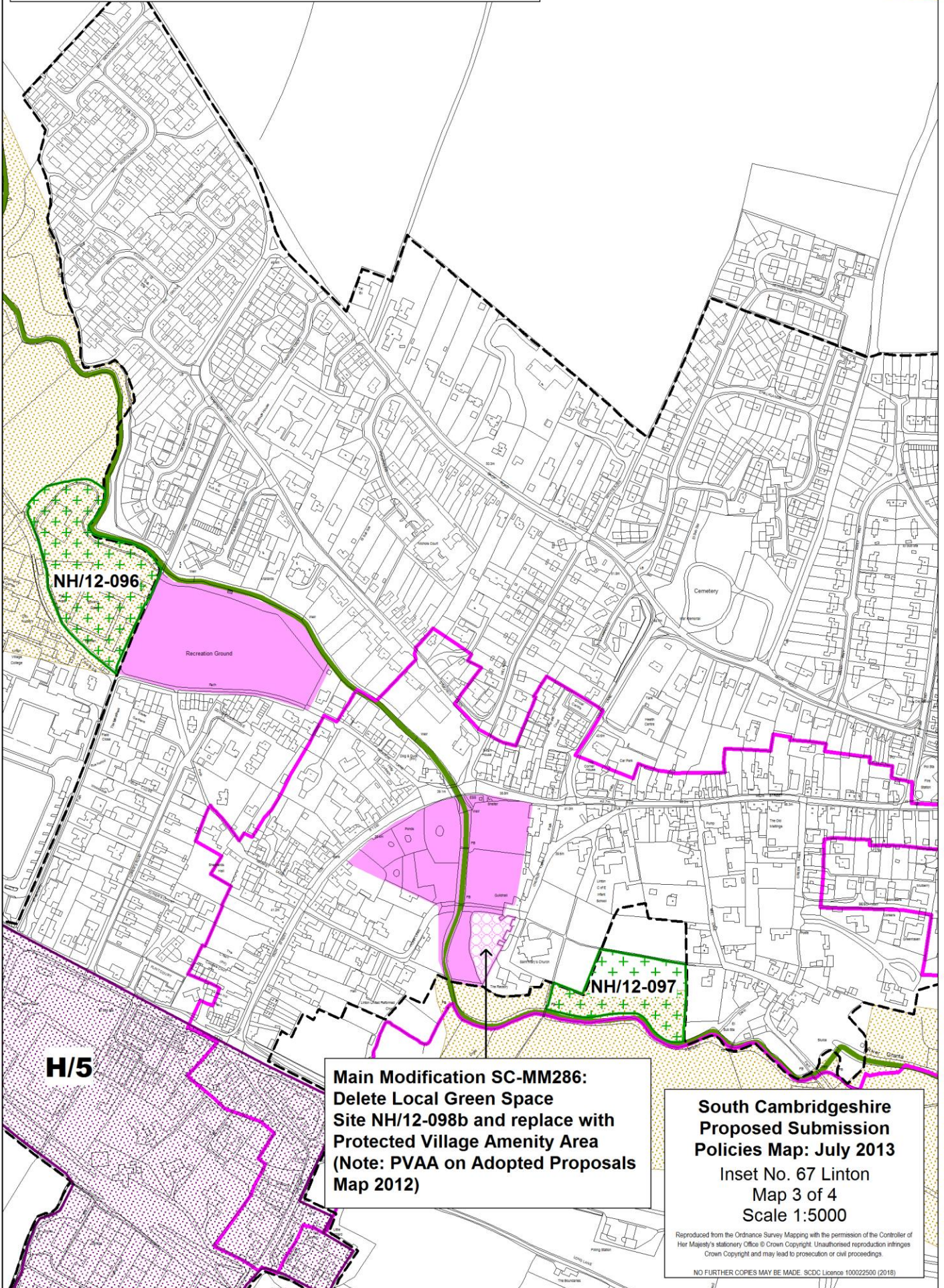
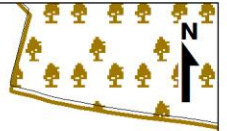


**South Cambridgeshire Local Plan
Main Modifications Consultation - January 2018**



**South Cambridgeshire Local Plan
Main Modifications Consultation - January 2018**



**Main Modification SC-MM286:
Delete Local Green Space
Site NH/12-098b and replace with
Protected Village Amenity Area
(Note: PVAA on Adopted Proposals
Map 2012)**

**South Cambridgeshire
Proposed Submission
Policies Map: July 2013**
Inset No. 67 Linton
Map 3 of 4
Scale 1:5000

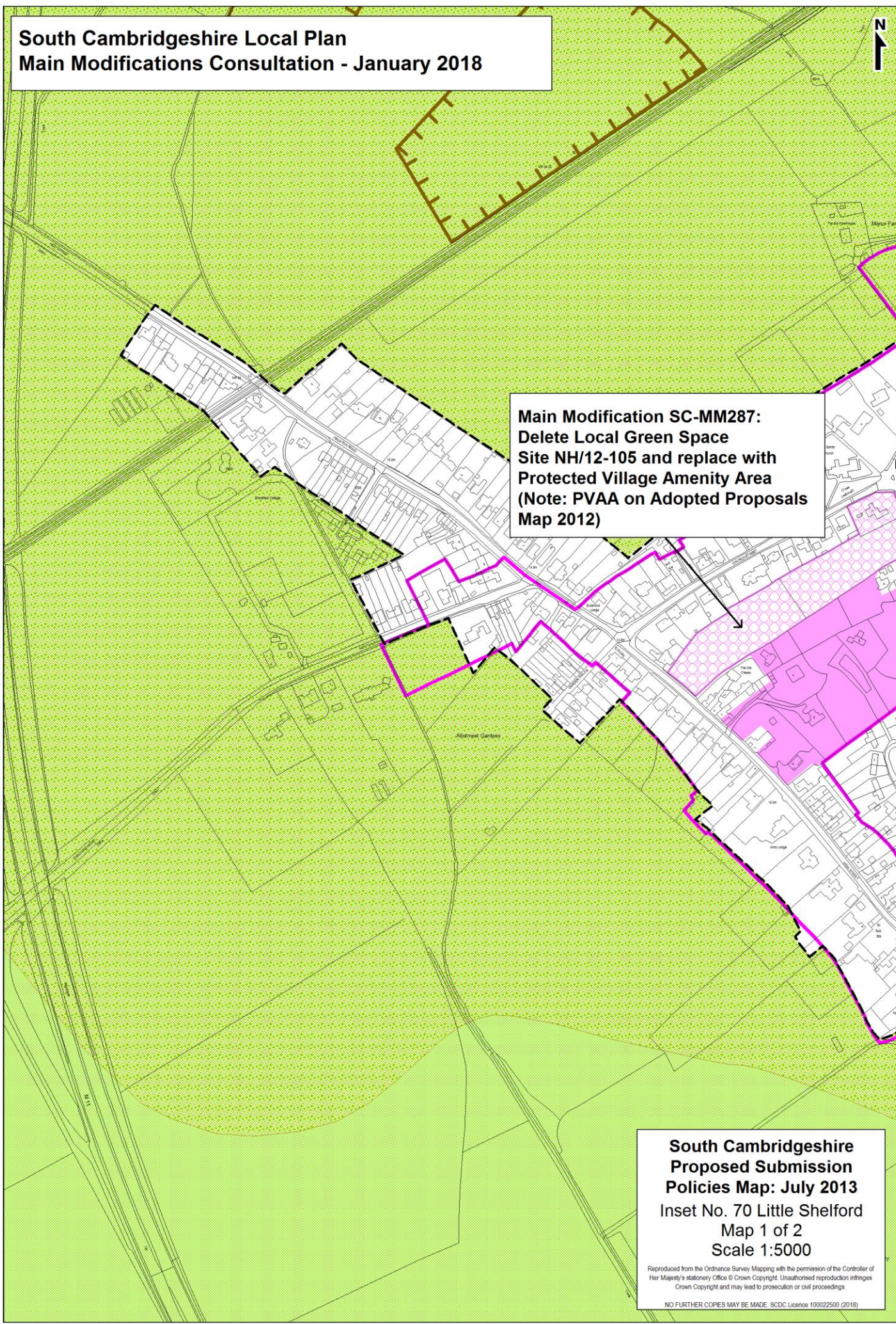
Reproduced from the Ordnance Survey Mapping with the permission of the Controller of Her Majesty's Stationery Office © Crown Copyright. Unauthorised reproduction infringes Crown Copyright and may lead to prosecution or civil proceedings.

NO FURTHER COPIES MAY BE MADE. SCDC Licence 100022500 (2018)

**South Cambridgeshire Local Plan
Main Modifications Consultation - January 2018**



**Main Modification SC-MM287:
Delete Local Green Space
Site NH/12-105 and replace with
Protected Village Amenity Area
(Note: PVAA on Adopted Proposals
Map 2012)**



**South Cambridgeshire
Proposed Submission
Policies Map: July 2013**
Inset No. 70 Little Shelford
Map 1 of 2
Scale 1:5000

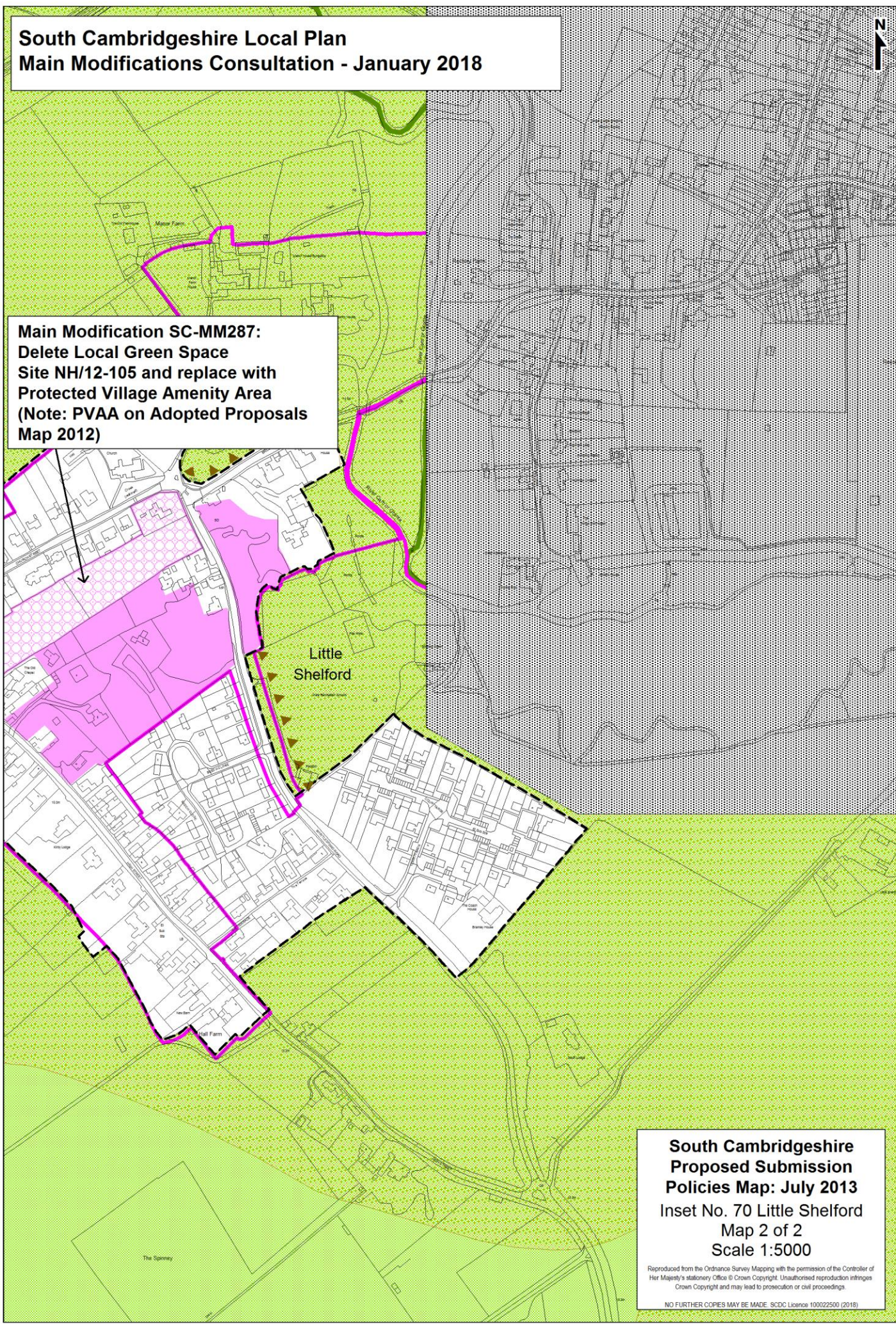
Reproduced from the Ordnance Survey Mapping with the permission of the Controller of Her Majesty's Stationery Office © Crown Copyright. Unauthorised reproduction infringes Crown Copyright and may lead to prosecution or civil proceedings.

NO FURTHER COPIES MAY BE MADE. SCDC Licence 100022500 (2018)

**South Cambridgeshire Local Plan
Main Modifications Consultation - January 2018**



**Main Modification SC-MM287:
Delete Local Green Space
Site NH/12-105 and replace with
Protected Village Amenity Area
(Note: PVAA on Adopted Proposals
Map 2012)**



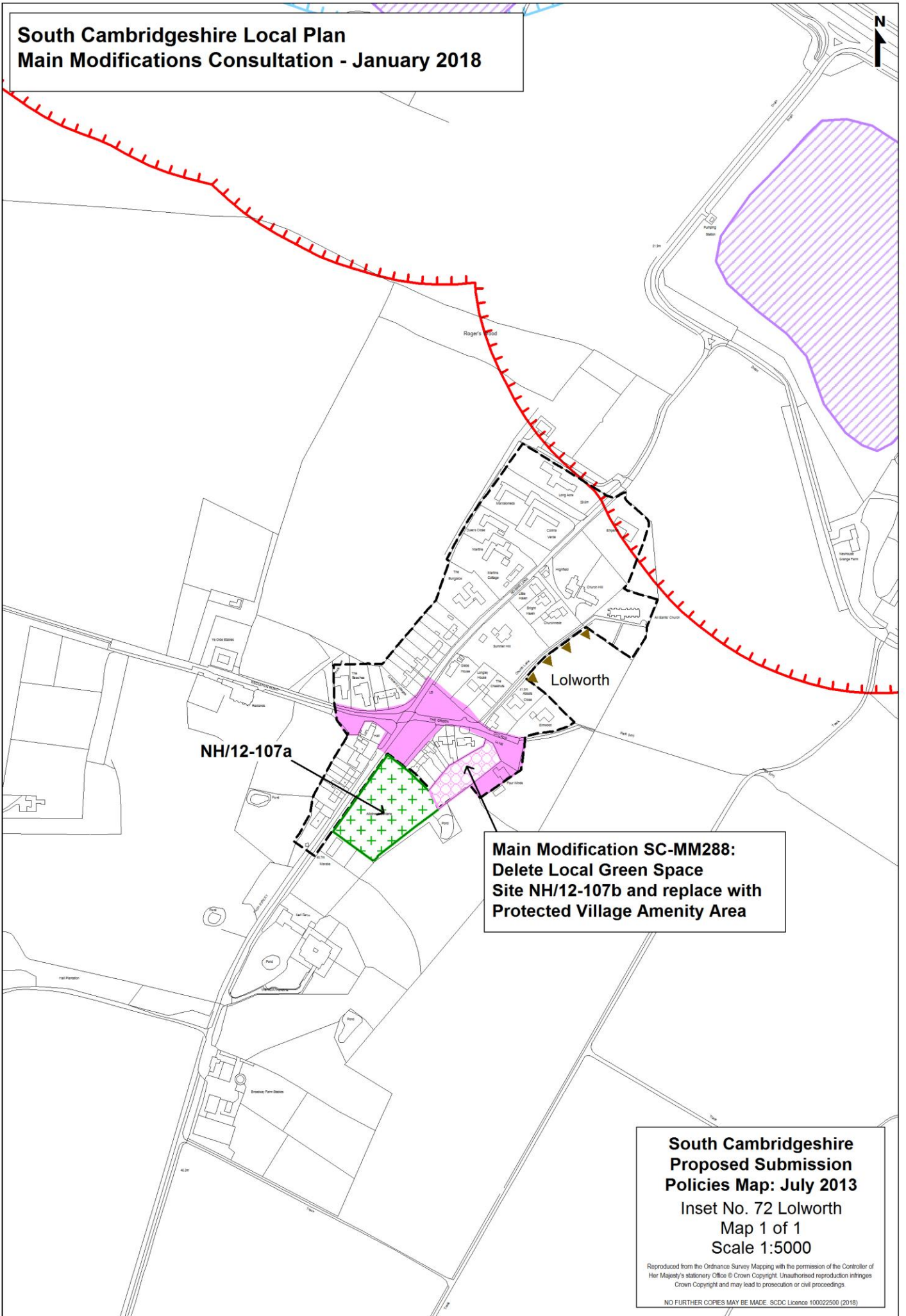
Little
Shelford

**South Cambridgeshire
Proposed Submission
Policies Map: July 2013
Inset No. 70 Little Shelford
Map 2 of 2
Scale 1:5000**

Reproduced from the Ordnance Survey Mapping with the permission of the Controller of Her Majesty's Stationery Office © Crown Copyright. Unauthorised reproduction infringes Crown Copyright and may lead to prosecution or civil proceedings.

NO FURTHER COPIES MAY BE MADE. SCDC Licence 100022500 (2018)

**South Cambridgeshire Local Plan
Main Modifications Consultation - January 2018**



**Main Modification SC-MM288:
Delete Local Green Space
Site NH/12-107b and replace with
Protected Village Amenity Area**

**South Cambridgeshire
Proposed Submission
Policies Map: July 2013**
Inset No. 72 Lolworth
Map 1 of 1
Scale 1:5000

Reproduced from the Ordnance Survey Mapping with the permission of the Controller of Her Majesty's Stationery Office © Crown Copyright. Unauthorised reproduction infringes Crown Copyright and may lead to prosecution or civil proceedings.

NO FURTHER COPIES MAY BE MADE. SDCD Licence 100022500 (2018)

**South Cambridgeshire Local Plan
Main Modifications Consultation - January 2018**



**South Cambridgeshire
Proposed Submission
Policies Map: July 2013**
Inset No. 76 Melbourn
Map 1 of 3
Scale 1:5000

Reproduced from the Ordnance Survey Mapping with the permission of the Controller of Her Majesty's Stationery Office © Crown Copyright. Unauthorised reproduction infringes Crown Copyright and may lead to prosecution or civil proceedings.

NO FURTHER COPIES MAY BE MADE. SCDC Licence 100022500 (2018)

**Main Modification SC-MM289i:
Delete Local Green Space
Site NH/12-108**

NH/12-109b

NH/12-109a

NH/12-110

**Main Modification SC-MM289i:
Add Local Green Space
Site NH/12-115
(additional area to north)**

NH/12-114

**Main Modification SC-MM289c:
Delete Local Green Space
Site NH/12-116 and replace with
Protected Village Amenity Area**

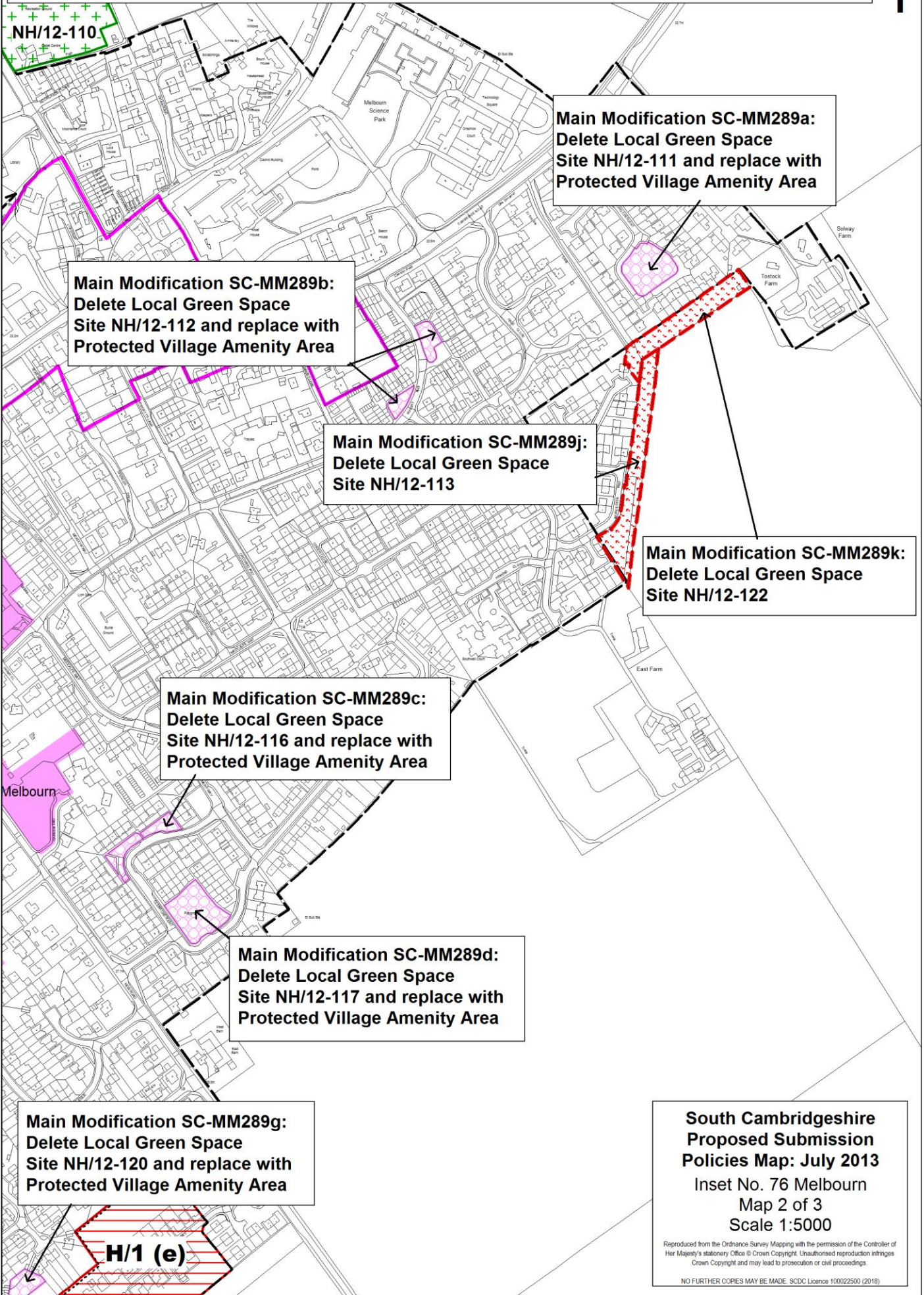
**Main Modification SC-MM289d:
Delete Local Green Space
Site NH/12-117 and replace with
Protected Village Amenity Area**

NH/12-115

**Main Modification SC-MM289e:
Delete Local Green Space
Site NH/12-118 and replace with
Protected Village Amenity Area**

Melbourn

South Cambridgeshire Local Plan Main Modifications Consultation - January 2018



Main Modification SC-MM289a:
Delete Local Green Space
Site NH/12-111 and replace with
Protected Village Amenity Area

Main Modification SC-MM289b:
Delete Local Green Space
Site NH/12-112 and replace with
Protected Village Amenity Area

Main Modification SC-MM289j:
Delete Local Green Space
Site NH/12-113

Main Modification SC-MM289k:
Delete Local Green Space
Site NH/12-122

Main Modification SC-MM289c:
Delete Local Green Space
Site NH/12-116 and replace with
Protected Village Amenity Area

Main Modification SC-MM289d:
Delete Local Green Space
Site NH/12-117 and replace with
Protected Village Amenity Area

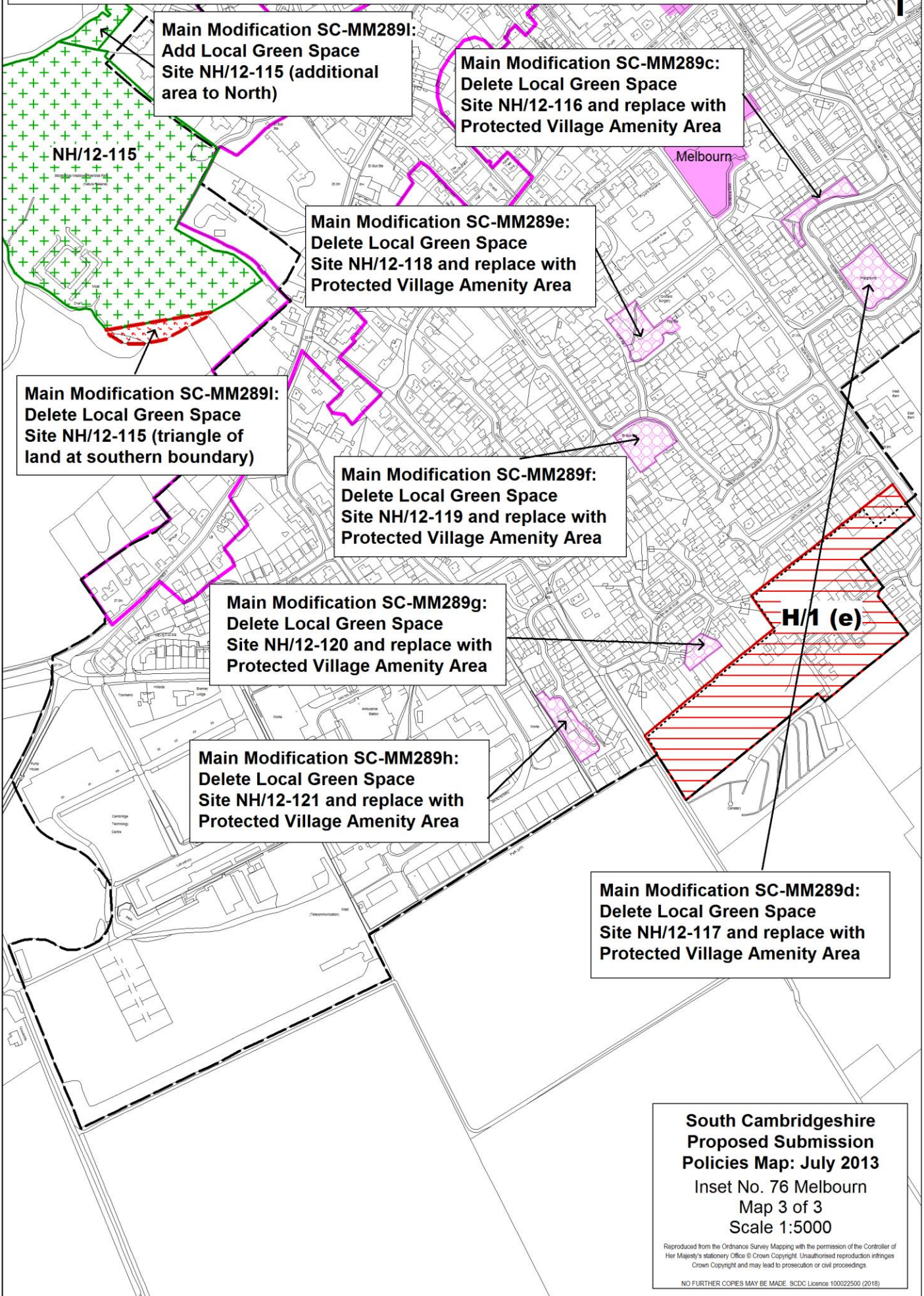
Main Modification SC-MM289g:
Delete Local Green Space
Site NH/12-120 and replace with
Protected Village Amenity Area

**South Cambridgeshire
Proposed Submission
Policies Map: July 2013**
Inset No. 76 Melbourn
Map 2 of 3
Scale 1:5000

Reproduced from the Ordnance Survey Mapping with the permission of the Controller of Her Majesty's Stationery Office © Crown Copyright. Unauthorised reproduction infringes Crown Copyright and may lead to prosecution or civil proceedings.

NO FURTHER COPIES MAY BE MADE. SDCD Licence 100022500 (2018)

South Cambridgeshire Local Plan Main Modifications Consultation - January 2018



Main Modification SC-MM289i:
 Add Local Green Space
 Site NH/12-115 (additional
 area to North)

Main Modification SC-MM289c:
 Delete Local Green Space
 Site NH/12-116 and replace with
 Protected Village Amenity Area

Main Modification SC-MM289e:
 Delete Local Green Space
 Site NH/12-118 and replace with
 Protected Village Amenity Area

Main Modification SC-MM289i:
 Delete Local Green Space
 Site NH/12-115 (triangle of
 land at southern boundary)

Main Modification SC-MM289f:
 Delete Local Green Space
 Site NH/12-119 and replace with
 Protected Village Amenity Area

Main Modification SC-MM289g:
 Delete Local Green Space
 Site NH/12-120 and replace with
 Protected Village Amenity Area

Main Modification SC-MM289h:
 Delete Local Green Space
 Site NH/12-121 and replace with
 Protected Village Amenity Area

Main Modification SC-MM289d:
 Delete Local Green Space
 Site NH/12-117 and replace with
 Protected Village Amenity Area

**South Cambridgeshire
 Proposed Submission
 Policies Map: July 2013**
 Inset No. 76 Melbourn
 Map 3 of 3
 Scale 1:5000

Reproduced from the Ordnance Survey Mapping with the permission of the Controller of Her Majesty's Stationery Office © Crown Copyright. Unauthorised reproduction infringes Crown Copyright and may lead to prosecution or civil proceedings.

NO FURTHER COPIES MAY BE MADE. SDCD Licence 100022500 (2018)

**South Cambridgeshire Local Plan
Main Modifications Consultation - January 2018**



Meldreth

**NOTE:
Previously
a PVAA**

**Main Modification SC-MM290:
Delete Local Green Space
Site NH/12-124 and replace with
Protected Village Amenity Area**

NH/12-123

**South Cambridgeshire
Proposed Submission
Policies Map: July 2013**
Inset No. 77 Meldreth
Map 2 of 2
Scale 1:5000

Reproduced from the Ordnance Survey Mapping with the permission of the Controller of Her Majesty's Stationery Office © Crown Copyright. Unauthorised reproduction infringes Crown Copyright and may lead to prosecution or civil proceedings.

NO FURTHER COPIES MAY BE MADE. SCDC Licence 100022500 (2018)