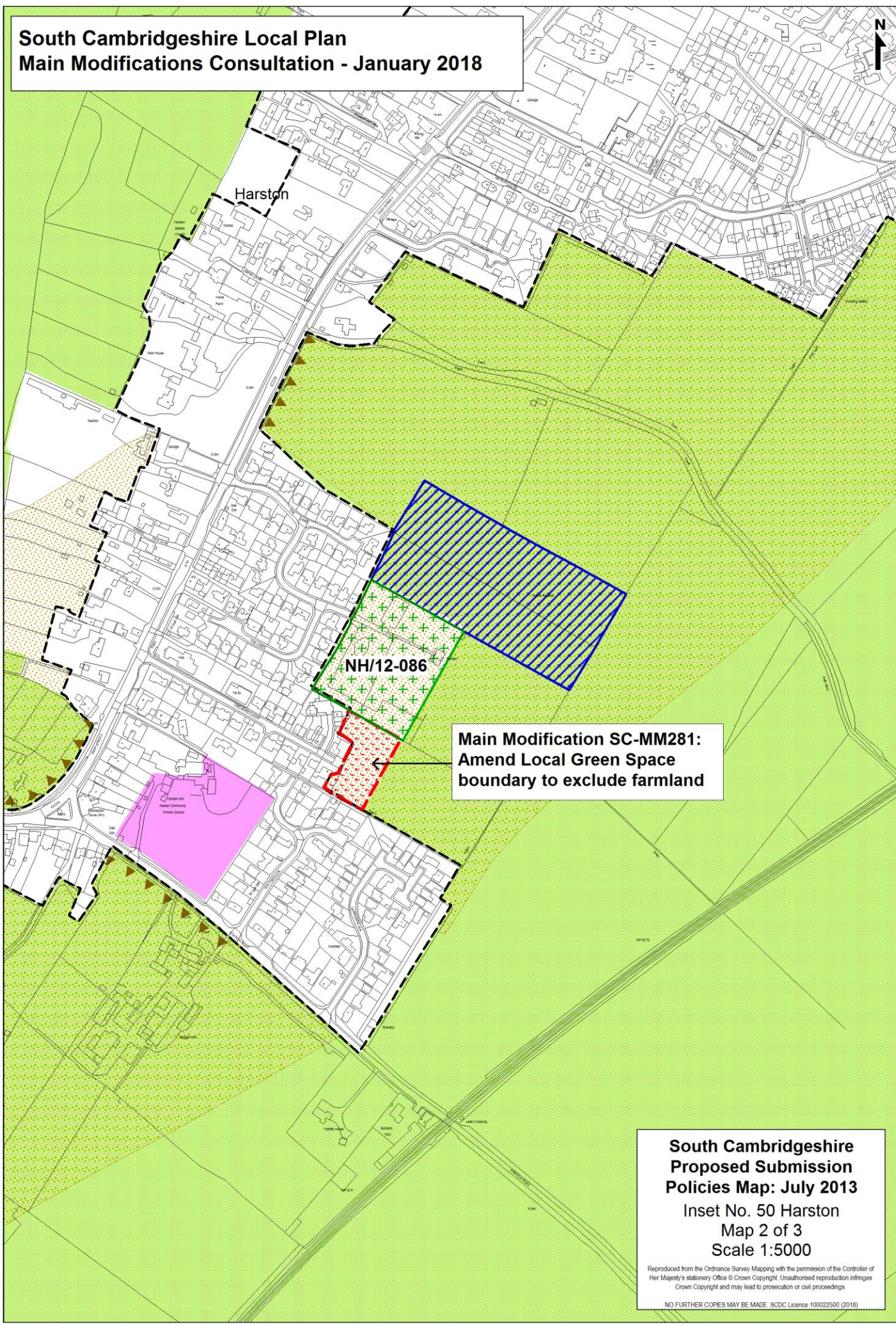


**South Cambridgeshire Local Plan  
Main Modifications Consultation - January 2018**



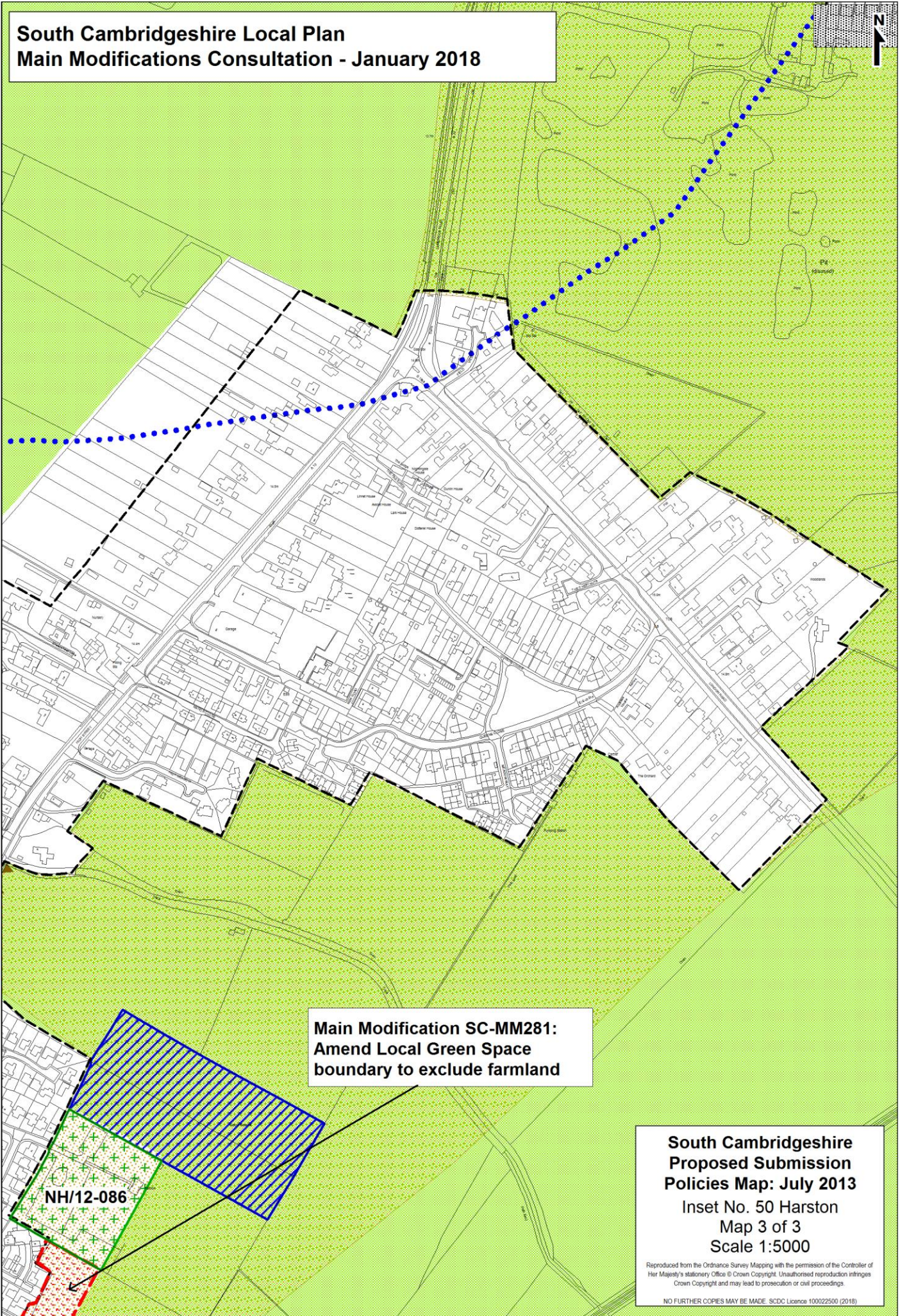
**Main Modification SC-MM281:  
Amend Local Green Space  
boundary to exclude farmland**

**South Cambridgeshire  
Proposed Submission  
Policies Map: July 2013**  
Inset No. 50 Harston  
Map 2 of 3  
Scale 1:5000

Reproduced from the Ordnance Survey Mapping with the permission of the Controller of Her Majesty's Stationery Office © Crown Copyright. Unauthorised reproduction infringes Crown Copyright and may lead to prosecution or civil proceedings.

NO FURTHER COPIES MAY BE MADE. SDCD Licence 100022500 (2018)

**South Cambridgeshire Local Plan  
Main Modifications Consultation - January 2018**



**Main Modification SC-MM281:  
Amend Local Green Space  
boundary to exclude farmland**

**NH/12-086**

**South Cambridgeshire  
Proposed Submission  
Policies Map: July 2013**  
Inset No. 50 Harston  
Map 3 of 3  
Scale 1:5000

Reproduced from the Ordnance Survey Mapping with the permission of the Controller of Her Majesty's Stationery Office © Crown Copyright. Unauthorised reproduction infringes Crown Copyright and may lead to prosecution or civil proceedings.

NO FURTHER COPIES MAY BE MADE. SDC Licence 100022500 (2018)

**South Cambridgeshire  
Proposed Submission  
Policies Map: July 2013**  
Inset No. 51 Haslingfield  
Map 1 of 2  
Scale 1:5000

Reproduced from the Ordnance Survey Mapping with the permission of the Controller of Her Majesty's Stationery Office © Crown Copyright. Unauthorised reproduction infringes Crown Copyright and may lead to prosecution or civil proceedings.

NO FURTHER COPIES MAY BE MADE. SDC Licence 100022500 (2018)



**NOTE:  
Previously  
a PVAA**

**Main Modification SC-MM282:  
Delete Local Green Space  
Site NH/12-087d and replace with  
Protected Village Amenity Area**

NH/12-087a

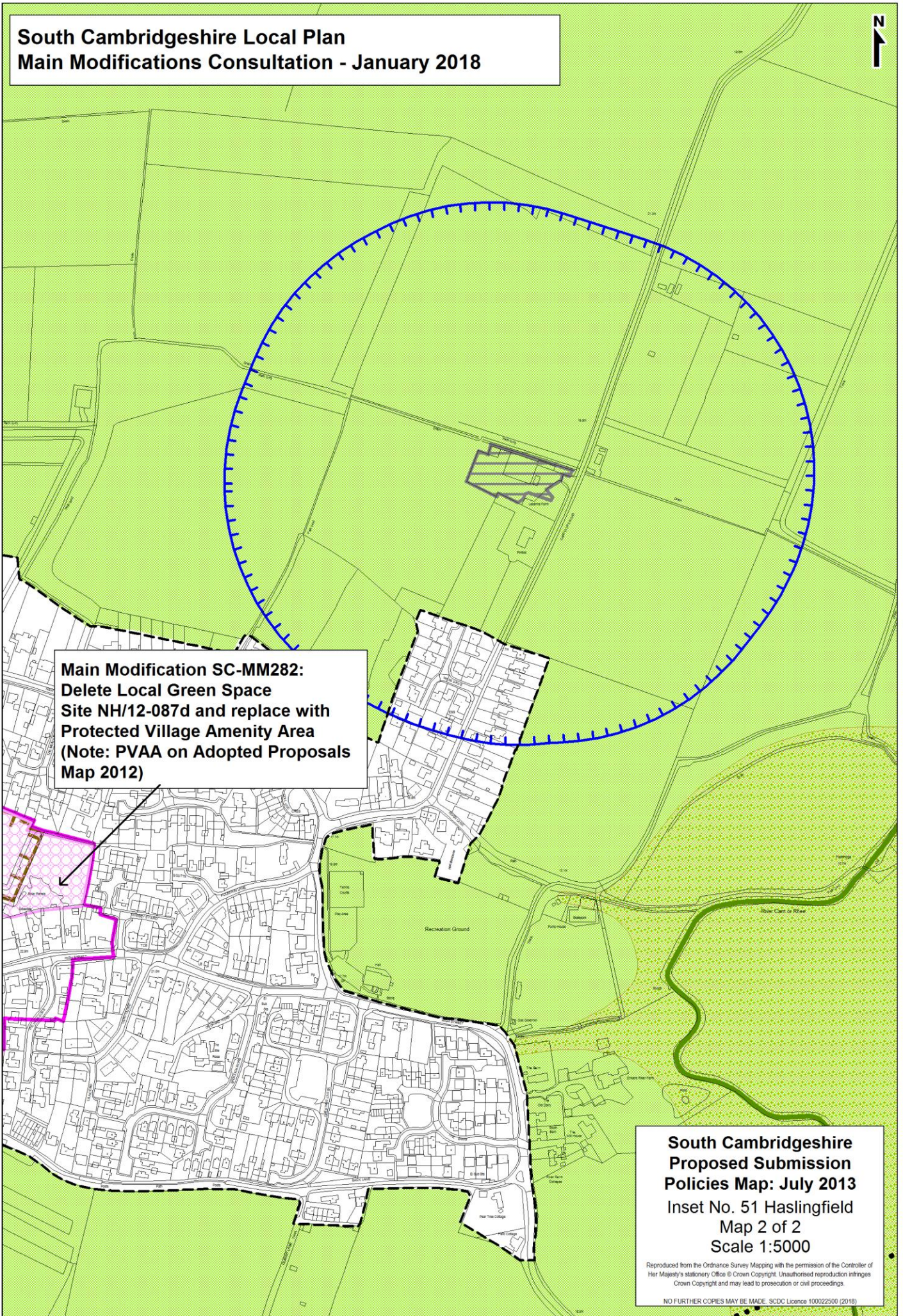
NH/12-087b

NH/12-087c

Haslingfield

**South Cambridgeshire Local Plan  
Main Modifications Consultation - January 2018**

**South Cambridgeshire Local Plan  
Main Modifications Consultation - January 2018**



**Main Modification SC-MM282:  
Delete Local Green Space  
Site NH/12-087d and replace with  
Protected Village Amenity Area  
(Note: PVAA on Adopted Proposals  
Map 2012)**

**South Cambridgeshire  
Proposed Submission  
Policies Map: July 2013  
Inset No. 51 Haslingfield  
Map 2 of 2  
Scale 1:5000**

Reproduced from the Ordnance Survey Mapping with the permission of the Controller of Her Majesty's Stationery Office © Crown Copyright. Unauthorised reproduction infringes Crown Copyright and may lead to prosecution or civil proceedings.

NO FURTHER COPIES MAY BE MADE. SDCDC Licence 100022500 (2018)

**South Cambridgeshire Local Plan  
Main Modifications Consultation - January 2018**

**Main Modification SC-MM283:  
Delete Local Green Space  
Site NH/12-089 and replace with  
Protected Village Amenity Area  
(Note: PVAA on Adopted Proposals  
Map 2012)**

**E/8**  
Impington

**South Cambridgeshire  
Proposed Submission  
Policies Map: July 2013**  
Inset No. 58 Histon & Impington  
Map 6 of 7  
Scale 1:5000

Reproduced from the Ordnance Survey Mapping with the permission of the Controller of Her Majesty's Stationery Office © Crown Copyright. Unauthorised reproduction infringes Crown Copyright and may lead to prosecution or civil proceedings.

NO FURTHER COPIES MAY BE MADE. SCDC Licence 100022500 (2018)

**South Cambridgeshire Local Plan  
Main Modifications Consultation - January 2018**



**Main Modification SC-MM283:  
Delete Local Green Space  
Site NH/12-089 and replace with  
Protected Village Amenity Area  
(Note: PVAA on Adopted Proposals  
Map 2012)**

Impington  
**E/8**

**SP/14 (1e)  
(NOTE: no policy area  
in Draft Local Plan)**

**South Cambridgeshire  
Proposed Submission  
Policies Map: July 2013**  
Inset No. 58 Histon & Impington  
Map 7 of 7  
Scale 1:5000

Reproduced from the Ordnance Survey Mapping with the permission of the Controller of Her Majesty's Stationery Office © Crown Copyright. Unauthorised reproduction infringes Crown Copyright and may lead to prosecution or civil proceedings.

NO FURTHER COPIES MAY BE MADE. SCDC Licence 100022500 (2018)

**South Cambridgeshire  
Proposed Submission  
Policies Map: July 2013**  
Inset No. 61 Ickleton  
Map 1 of 1  
Scale 1:5000

Reproduced from the Ordnance Survey Mapping with the permission of the Controller of Her Majesty's Stationery Office © Crown Copyright. Unauthorised reproduction infringes Crown Copyright and may lead to prosecution or civil proceedings.  
NO FURTHER COPIES MAY BE MADE. SCDC Licence 100022500 (2016)



**Main Modification SC-MM284:  
Delete Local Green Space  
Site NH/12-091**

NH/12-090

Ickleton

**South Cambridgeshire Local Plan  
Main Modifications Consultation - January 2018**

**South Cambridgeshire Local Plan  
Main Modifications Consultation - January 2018**



**Main Modification SC-MM285b:  
Delete Local Green Space  
Site NH/12-094b and replace with  
Protected Village Amenity Area**

**NOTE:  
Previously  
a PVAA**

NH/12-094a

Kingston

NH/12-092a

NH/12-093

**Main Modification SC-MM285a:  
Delete Local Green Space  
Site NH/12-092b and replace with  
Protected Village Amenity Area**

NH/12-095

**South Cambridgeshire  
Proposed Submission  
Policies Map: July 2013**

Inset No. 62 Kingston  
Map 1 of 1  
Scale 1:5000

Reproduced from the Ordnance Survey Mapping with the permission of the Controller of Her Majesty's Stationery Office © Crown Copyright. Unauthorised reproduction infringes Crown Copyright and may lead to prosecution or civil proceedings.

NO FURTHER COPIES MAY BE MADE. SDCD Licence 100022500 (2018)