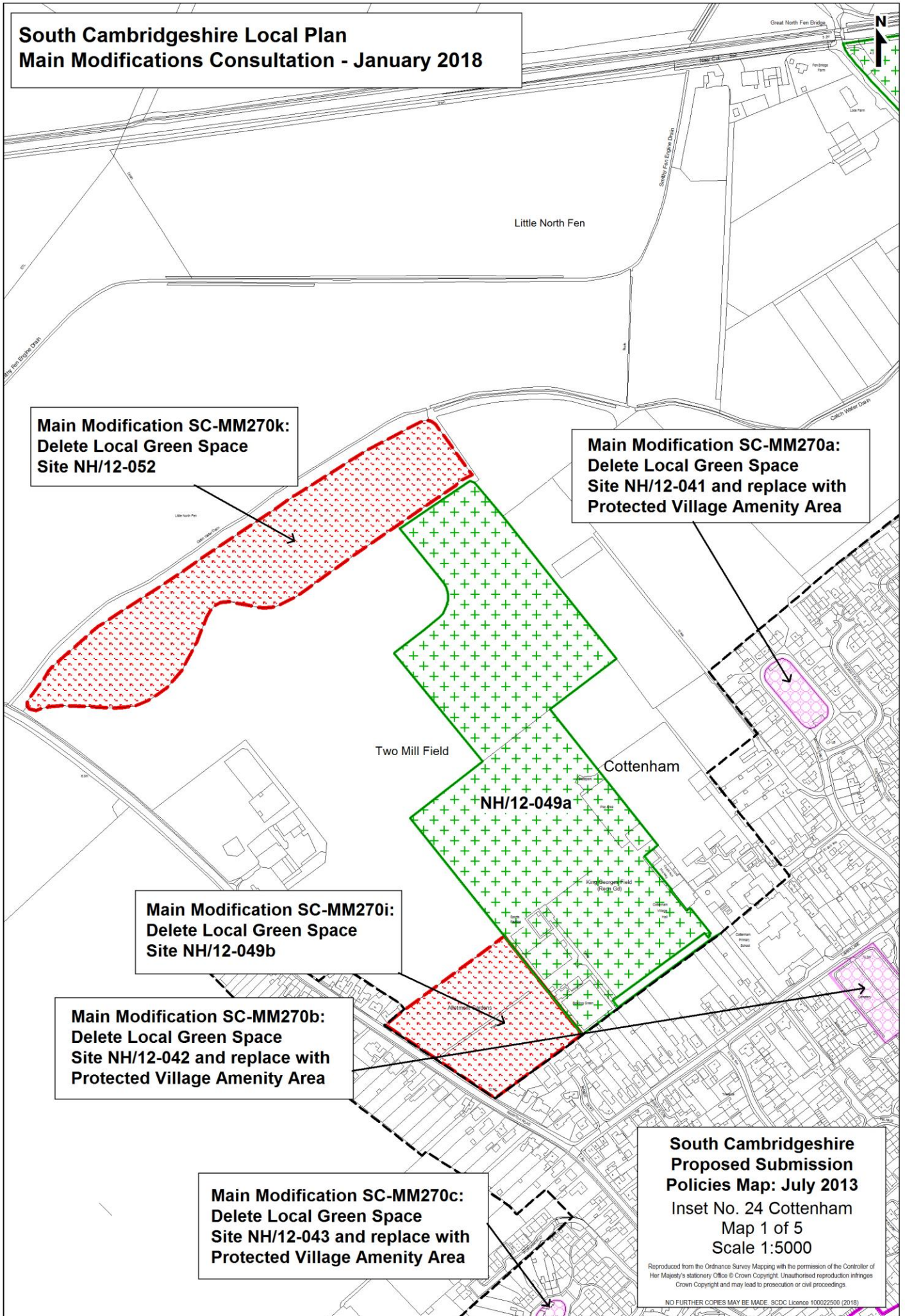


**South Cambridgeshire Local Plan
Main Modifications Consultation - January 2018**



**Main Modification SC-MM270k:
Delete Local Green Space
Site NH/12-052**

**Main Modification SC-MM270a:
Delete Local Green Space
Site NH/12-041 and replace with
Protected Village Amenity Area**

**Main Modification SC-MM270i:
Delete Local Green Space
Site NH/12-049b**

**Main Modification SC-MM270b:
Delete Local Green Space
Site NH/12-042 and replace with
Protected Village Amenity Area**

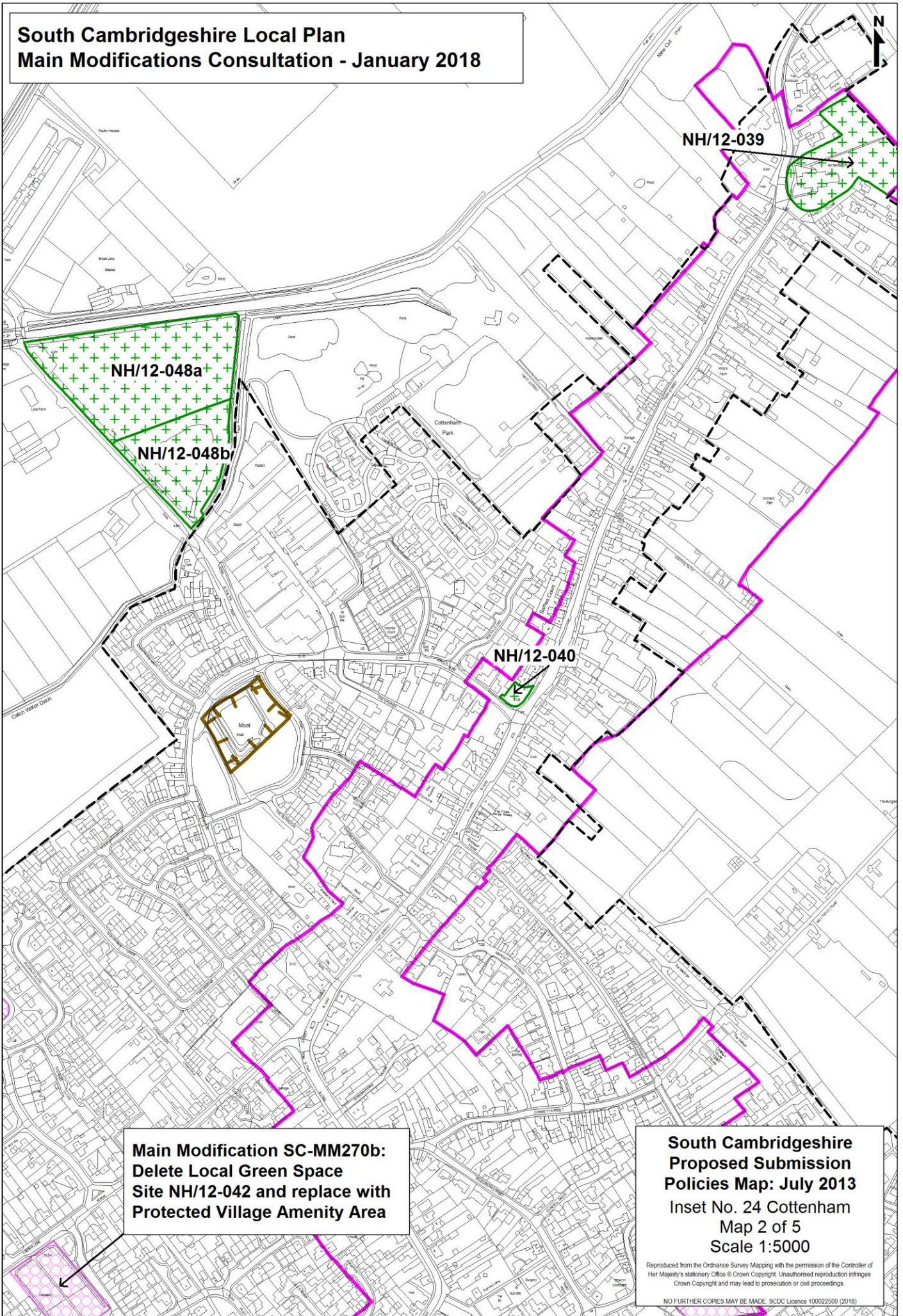
**Main Modification SC-MM270c:
Delete Local Green Space
Site NH/12-043 and replace with
Protected Village Amenity Area**

**South Cambridgeshire
Proposed Submission
Policies Map: July 2013
Inset No. 24 Cottenham
Map 1 of 5
Scale 1:5000**

Reproduced from the Ordnance Survey Mapping with the permission of the Controller of Her Majesty's Stationery Office © Crown Copyright. Unauthorised reproduction infringes Crown Copyright and may lead to prosecution or civil proceedings.

NO FURTHER COPIES MAY BE MADE. SDCD Licence 100022500 (2018)

**South Cambridgeshire Local Plan
Main Modifications Consultation - January 2018**



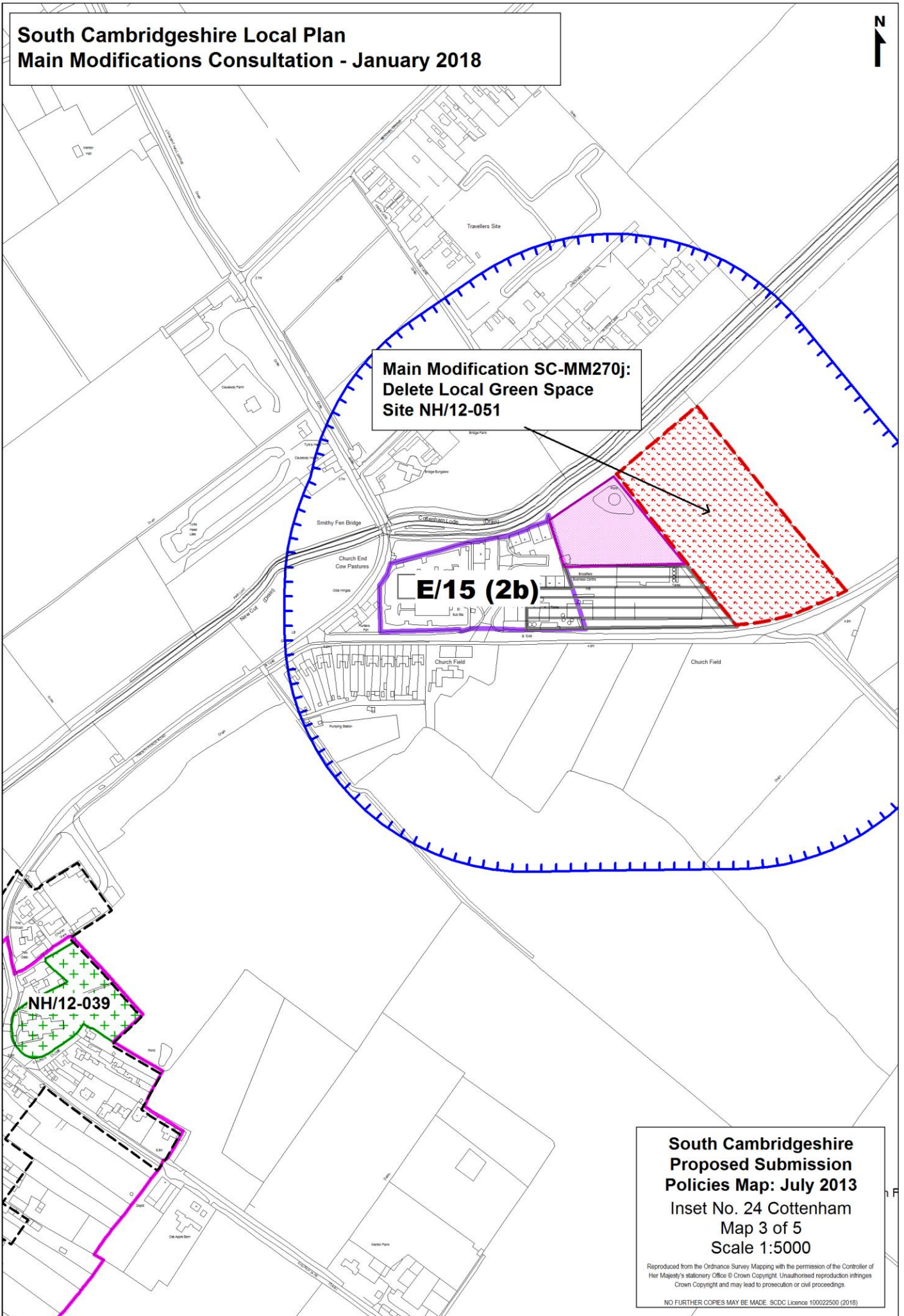
**Main Modification SC-MM270b:
Delete Local Green Space
Site NH/12-042 and replace with
Protected Village Amenity Area**

**South Cambridgeshire
Proposed Submission
Policies Map: July 2013
Inset No. 24 Cottenham
Map 2 of 5
Scale 1:5000**

Reproduced from the Ordnance Survey Mapping with the permission of the Controller of Her Majesty's Stationery Office © Crown Copyright. Unauthorised reproduction infringes Crown Copyright and may lead to prosecution or civil proceedings.

NO FURTHER COPIES MAY BE MADE. SDCDC Licence 100022500 (2018)

**South Cambridgeshire Local Plan
Main Modifications Consultation - January 2018**

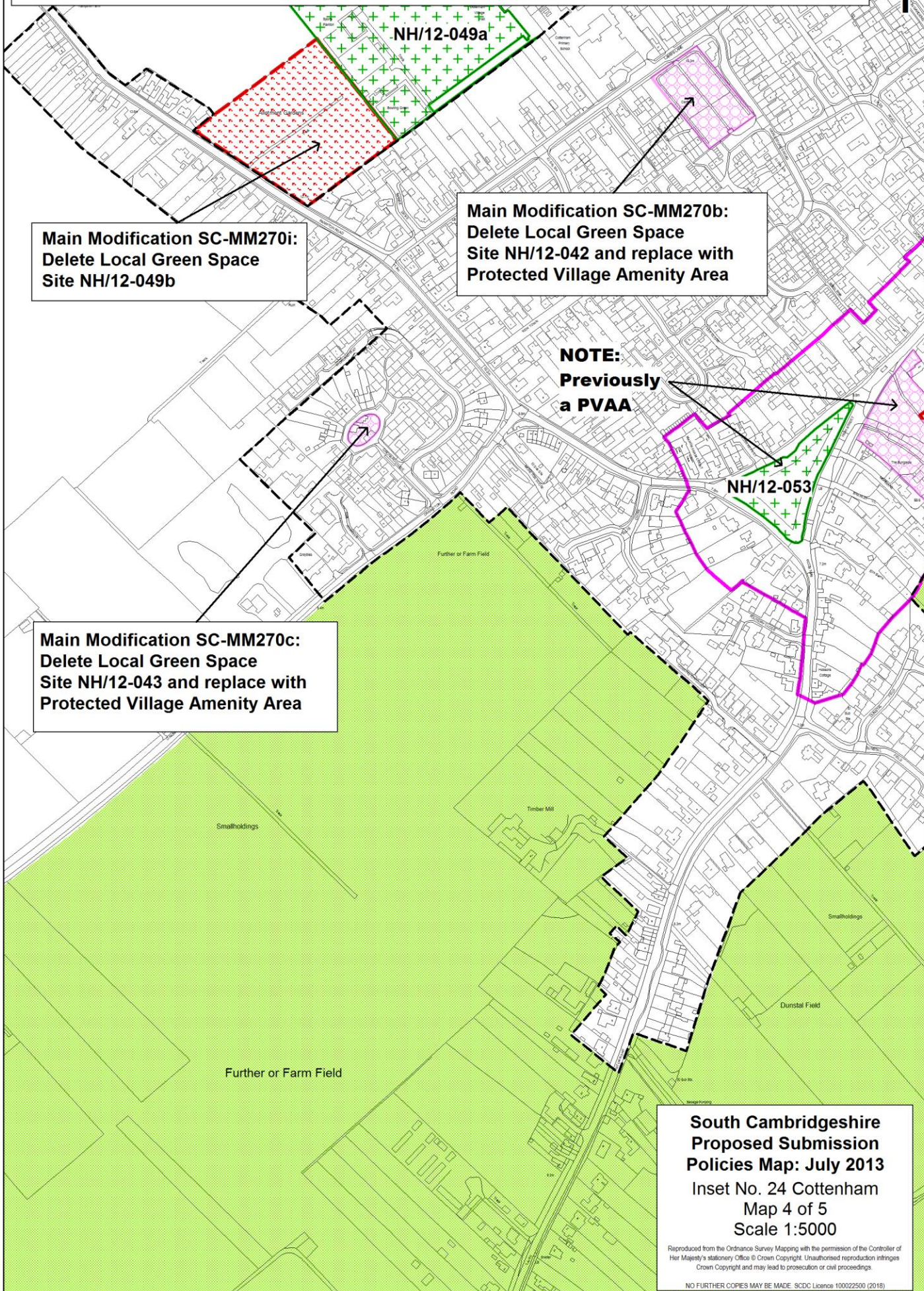


**South Cambridgeshire
Proposed Submission
Policies Map: July 2013**
Inset No. 24 Cottenham
Map 3 of 5
Scale 1:5000

Reproduced from the Ordnance Survey Mapping with the permission of the Controller of Her Majesty's Stationery Office © Crown Copyright. Unauthorised reproduction infringes Crown Copyright and may lead to prosecution or civil proceedings.

NO FURTHER COPIES MAY BE MADE. SDCD Licence 100022500 (2018)

South Cambridgeshire Local Plan Main Modifications Consultation - January 2018



Main Modification SC-MM270i:
Delete Local Green Space
Site NH/12-049b

Main Modification SC-MM270b:
Delete Local Green Space
Site NH/12-042 and replace with
Protected Village Amenity Area

NOTE:
Previously
a PVAA

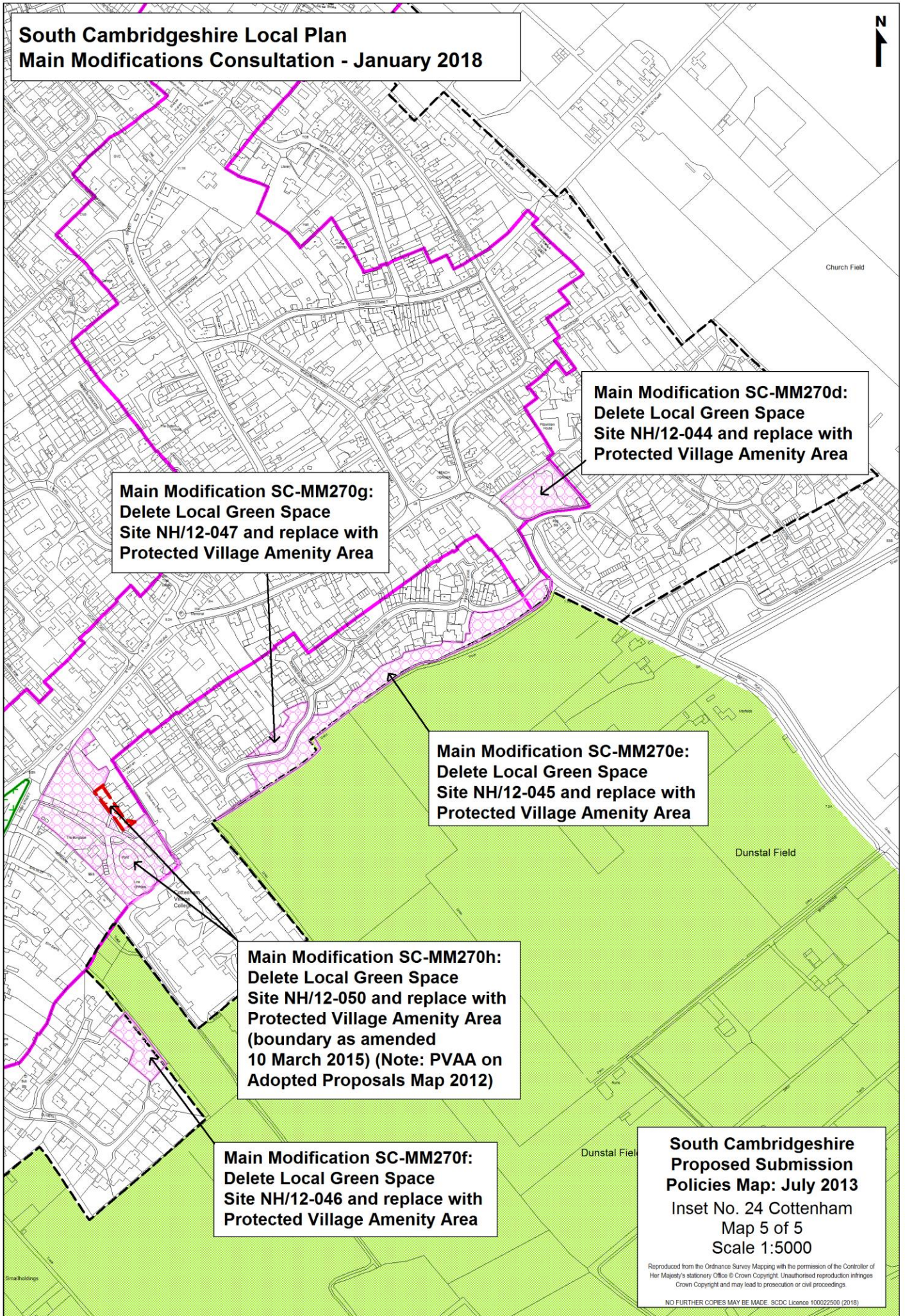
Main Modification SC-MM270c:
Delete Local Green Space
Site NH/12-043 and replace with
Protected Village Amenity Area

**South Cambridgeshire
Proposed Submission
Policies Map: July 2013**
Inset No. 24 Cottenham
Map 4 of 5
Scale 1:5000

Reproduced from the Ordnance Survey Mapping with the permission of the Controller of Her Majesty's Stationery Office © Crown Copyright. Unauthorised reproduction infringes Crown Copyright and may lead to prosecution or civil proceedings.

NO FURTHER COPIES MAY BE MADE. SCDC Licence 100022500 (2018)

**South Cambridgeshire Local Plan
Main Modifications Consultation - January 2018**



**Main Modification SC-MM270g:
Delete Local Green Space
Site NH/12-047 and replace with
Protected Village Amenity Area**

**Main Modification SC-MM270d:
Delete Local Green Space
Site NH/12-044 and replace with
Protected Village Amenity Area**

**Main Modification SC-MM270e:
Delete Local Green Space
Site NH/12-045 and replace with
Protected Village Amenity Area**

**Main Modification SC-MM270h:
Delete Local Green Space
Site NH/12-050 and replace with
Protected Village Amenity Area
(boundary as amended
10 March 2015) (Note: PVAA on
Adopted Proposals Map 2012)**

**Main Modification SC-MM270f:
Delete Local Green Space
Site NH/12-046 and replace with
Protected Village Amenity Area**

**South Cambridgeshire
Proposed Submission
Policies Map: July 2013**
Inset No. 24 Cottenham
Map 5 of 5
Scale 1:5000

Reproduced from the Ordnance Survey Mapping with the permission of the Controller of Her Majesty's Stationery Office © Crown Copyright. Unauthorised reproduction infringes Crown Copyright and may lead to prosecution or civil proceedings.

NO FURTHER COPIES MAY BE MADE. SDCD Licence 100022500 (2018)

**South Cambridgeshire Local Plan
Main Modifications Consultation - January 2018**



**Main Modification SC-MM271a:
Delete Local Green Space
Site NH/12-055 and replace with
Protected Village Amenity Area**

**Main Modification SC-MM271b:
Delete Local Green Space
Site NH/12-056 and replace with
Protected Village Amenity Area
(Note: PVAA on Adopted Proposals
Map 2012)**

E/15 (2c)

**South Cambridgeshire
Proposed Submission
Policies Map: July 2013
Inset No. 28 Duxford
Map 1 of 2
Scale 1:5000**

Reproduced from the Ordnance Survey Mapping with the permission of the Controller of Her Majesty's Stationery Office © Crown Copyright. Unauthorised reproduction infringes Crown Copyright and may lead to prosecution or civil proceedings.

NO FURTHER COPIES MAY BE MADE. SDCDC Licence 100022500 (2018)

**South Cambridgeshire Local Plan
Main Modifications Consultation - January 2018**



**Main Modification SC-MM272c:
Delete Local Green Space
Site NH/12-057**

**Main Modification SC-MM272f:
Delete Local Green Space
Site NH/12-064**

**Main Modification SC-MM272a:
Delete Local Green Space
Site NH/12-060 and replace with
Protected Village Amenity Area
(Note: PVAA on Adopted Proposals
Map 2012)**

**NOTE:
Previously
a PVAA**

**Main Modification SC-MM272d:
Delete Local Green Space
Site NH/12-062**

**Main Modification SC-MM272b:
Delete Local Green Space
Site NH/12-061 and replace with
Protected Village Amenity Area
(Note: PVAA on Adopted Proposals
Map 2012)**

**Main Modification SC-MM272e:
Delete Local Green Space
Site NH/12-063**

**South Cambridgeshire
Proposed Submission
Policies Map: July 2013**
Inset No. 29 Elsworth
Map 1 of 2
Scale 1:5000

Reproduced from the Ordnance Survey Mapping with the permission of the Controller of Her Majesty's Stationery Office © Crown Copyright. Unauthorised reproduction infringes Crown Copyright and may lead to prosecution or civil proceedings.

NO FURTHER COPIES MAY BE MADE. SDCD Licence 100022500 (2018)

**South Cambridgeshire Local Plan
Main Modifications Consultation - January 2018**



**Main Modification SC-MM272f:
Delete Local Green Space
Site NH/12-064**

**Main Modification SC-MM272a:
Delete Local Green Space
Site NH/12-060 and replace with
Protected Village Amenity Area
(Note: PVAA on Adopted Proposals
Map 2012)**

NH/12-058

NH/12-059

Elsworth

**NOTE:
Previously
a PVAA**

**Main Modification SC-MM272b:
Delete Local Green Space
Site NH/12-061 and replace with
Protected Village Amenity Area
(Note: PVAA on Adopted Proposals
Map 2012)**

**Main Modification SC-MM272d:
Delete Local Green Space
Site NH/12-062**

**Main Modification SC-MM272e:
Delete Local Green Space
Site NH/12-063**

**South Cambridgeshire
Proposed Submission
Policies Map: July 2013**
Inset No. 29 Elsworth
Map 2 of 2
Scale 1:5000

Reproduced from the Ordnance Survey Mapping with the permission of the Controller of Her Majesty's Stationery Office © Crown Copyright. Unauthorised reproduction infringes Crown Copyright and may lead to prosecution or civil proceedings.

NO FURTHER COPIES MAY BE MADE. SDCD Licence 100022500 (2018)

**South Cambridgeshire Local Plan
Main Modifications Consultation - January 2018**



**NOTE:
Previously
a PVAA**

NH/12-065

**Main Modification SC-MM273b:
Delete Local Green Space
Site NH/12-067**

Eltisley

**South Cambridgeshire
Proposed Submission
Policies Map: July 2013**

**Inset No. 30 Eltisley
Map 1 of 2
Scale 1:5000**

Reproduced from the Ordnance Survey Mapping with the permission of the Controller of Her Majesty's Stationery Office © Crown Copyright. Unauthorised reproduction infringes Crown Copyright and may lead to prosecution or civil proceedings.

NO FURTHER COPIES MAY BE MADE. SCDC Licence 100022500 (2018)

**South Cambridgeshire Local Plan
Main Modifications Consultation - January 2018**



**NOTE:
Previously
a PVAA**

NH/12-065

**Main Modification SC-MM273a:
Delete Local Green Space
Site NH/12-066**

Eltisley

**Main Modification SC-MM273b:
Delete Local Green Space
Site NH/12-067**

**South Cambridgeshire
Proposed Submission
Policies Map: July 2013**

**Inset No. 30 Eltisley
Map 2 of 2
Scale 1:5000**

Reproduced from the Ordnance Survey Mapping with the permission of the Controller of Her Majesty's Stationery Office © Crown Copyright. Unauthorised reproduction infringes Crown Copyright and may lead to prosecution or civil proceedings.

NO FURTHER COPIES MAY BE MADE. SDCDC Licence 100022500 (2018)