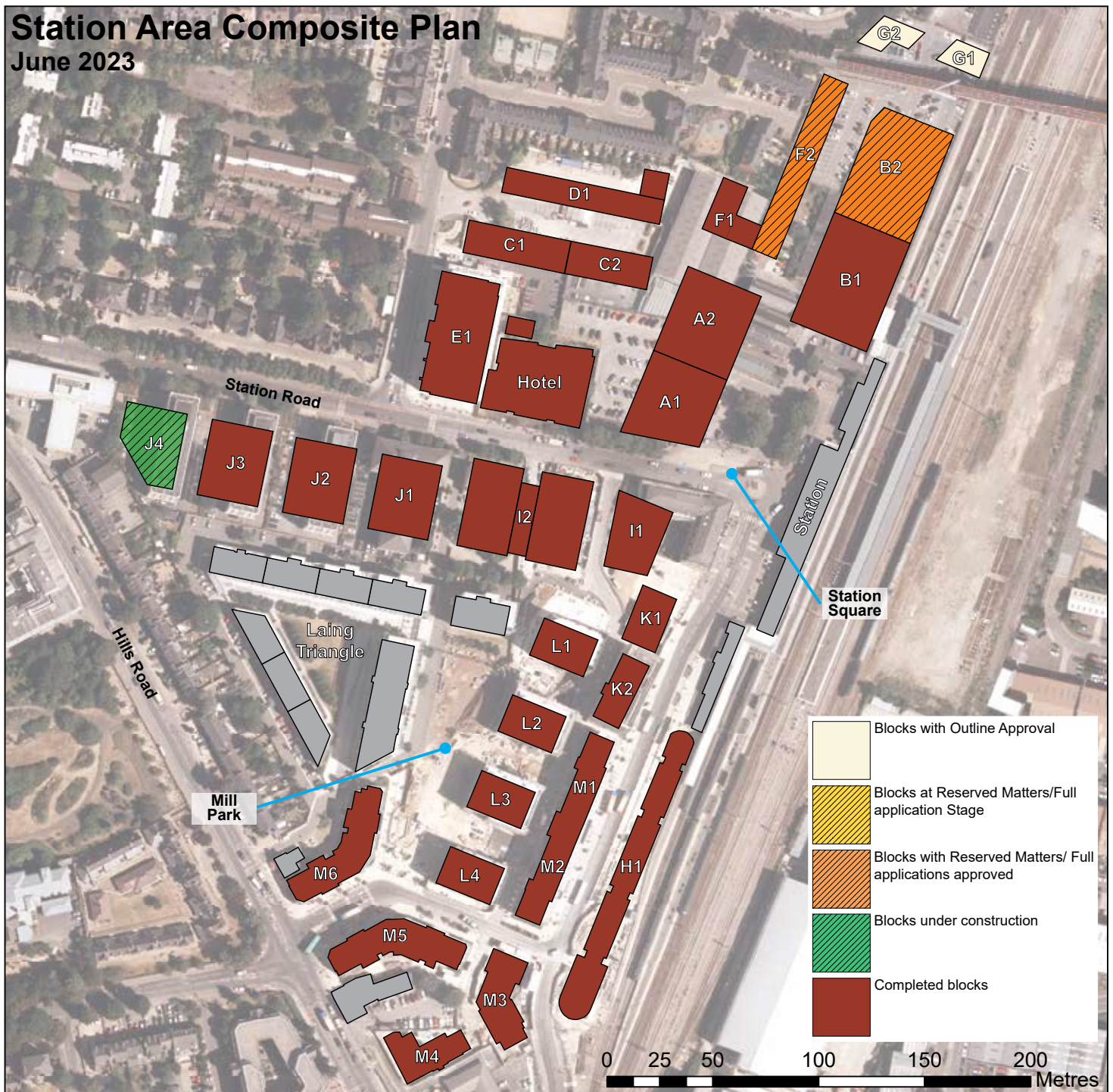


Station Area Composite Plan

June 2023



© Crown copyright and database right 2016. Ordnance Survey Licence number 100019730.

Block/Site	Application Reference	Description
Station Square	13/0860/REM	Layout of new station square (complete)
Block A1 / A2	12/1608/FUL	Office building plus retail/café & restaurant floor space (One, The Square)
Block B1	12/1622/FUL	Hotel and multi-storey cycle park
Block B2	21/00264/FUL	Aparthotel and multi-storey car park for Network Rail
Blocks C1 / C2, D1 / F1	13/1034/REM	137 residential units
Block E1	10/0797/REM	Office building (Microsoft)
Block F2	21/00264/FUL	Class E(g) floorspace including ancillary accommodation
Block G1 / G2	-	No details yet
Block H1	12/1445/REM	Student accommodation (354 units) plus retail floor space
Block I1 / K1	15/1759/FUL	Office floor space, retail, café/restaurant floor space and 89 residential units
Block I2	15/0906/FUL	Office and retail/café floor space
Hotel	13/1461/FUL	169-room hotel
Block J1	15/1522/FUL	Office building
Block J2	12/1237/REM	Office building
Block J3	15/0864/FUL 15/0865/FUL	Office building
Block J4	15/2271/FUL	Office building
Blocks J3 + J4	17/1550/FUL	Office Building (10 + 20 Station Road)
Blocks L1 / L2 / L3 / L4 / K2	11/0633/REM	169 residential units plus retail space and a community room
Blocks M1 / M2, M5 / M6	10/0810/REM	Student accommodation (511 units), student recreational facilities and retail space
Blocks M3 / M4	11/1537/REM	Student accommodation (232 units) plus associated facilities
Mill Park	13/0058/FUL	Site clearing and landscaping
Mill Park	17/0149/FUL	Mill Park Landscape Works

Station Area (Application Ref: 08/0266/OUT)
<ul style="list-style-type: none"> 331 residential units (40% affordable homes) 1,250 student units 53,560m² Class B1a (office) floor space 5,255m² Class A1/A3/A4 and/or A5 (retail) floor space 6,658m² polyclinic 86m² D1 (art workshop) floor space 1,753m² D1 and/or D2 floor space - gym, nursery, student/community facilities 7,466m² hotel A new transport interchange and station square Highway works (incl. improvements to the Hills Road / Brooklands Avenue and Hills Road / Station Road junctions) and new/improved private and public spaces.