

Darwin Green 1 current planning applications

Parcel 3 BDW3 21/05434/REM

210 Homes and allotments

Key dates:

Submitted in December 2021

Amended scheme submitted January 2023

Estimated Joint Development Control Committee April 2023



Reserved Matters application for third housing phase (known as BDW3) including 210 dwellings with associated internal roads, car parking, landscaping, amenity and public open space. The Reserved Matters include access, appearance, landscaping, layout and scale and related partial discharge of conditions 8, 10, 14, 17, 18, 22, 25, 26, 28, 35, 40, 49, 58, 62, 66, and 69 pursuant to outline approval 07/0003/OUT

<https://applications.greatercambridgeplanning.org/online-applications>

Julia Briggs

Senior Planner – Strategic Sites Team

Julia.briggs@greatercambridgeplanning.org

or 07716 702273

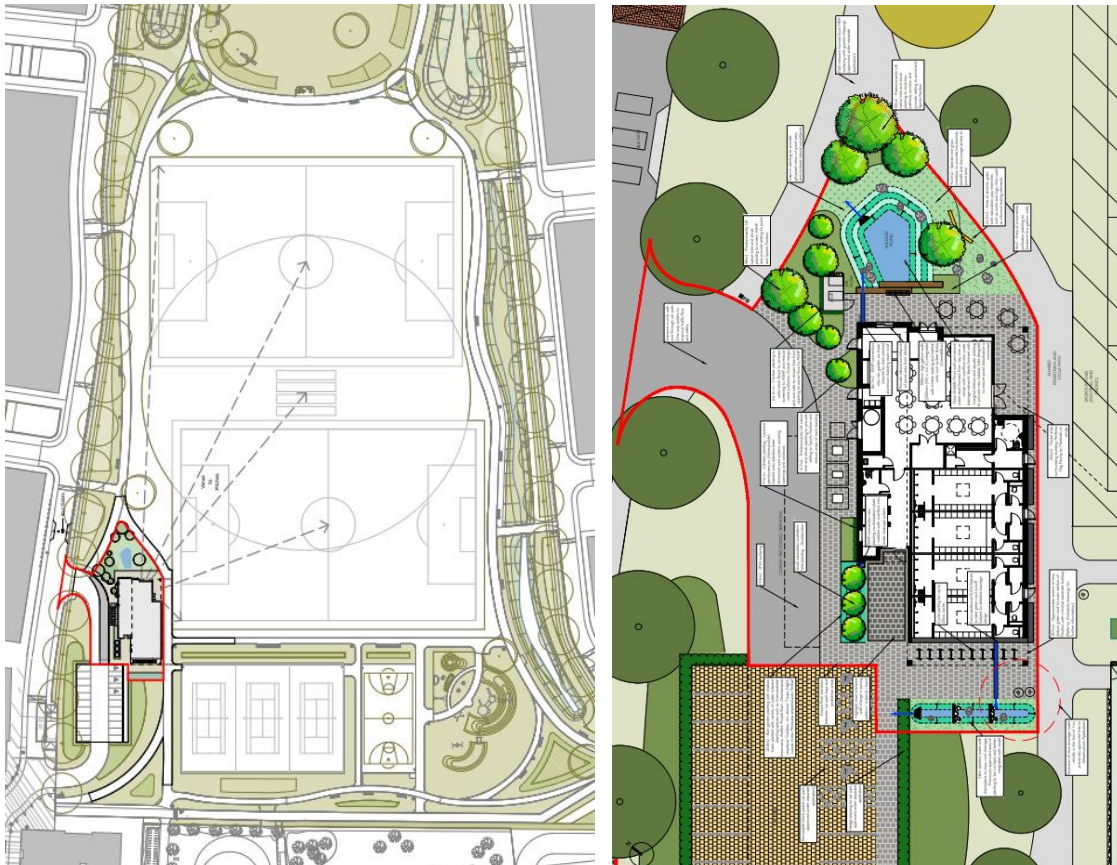
Darwin Green Sports Pavilion 22/05585/FUL

Construction of Sports Pavilion at Darwin Green 1 Central Park, including access, cycle parking, landscaping and associated works.

Key dates:

Submitted in December 2022

Estimated planning committee June 2023





<https://applications.greatercambridgeplanning.org/online-applications>

Julia Briggs

Senior Planner – Strategic Sites Team

Julia.briggs@greatercambridgeplanning.org

or 07716 702273