

# RESIDENT LIAISON MEETING

## 25<sup>TH</sup> MAY 2022



[cambridge.gov.uk](http://cambridge.gov.uk)

[facebook.com/camcitco](https://facebook.com/camcitco)

[twitter.com/camcitco](https://twitter.com/camcitco)

# Resident Liaison Meeting

## Agenda:

1. Welcome and Introductions	6-6.05	Cllr Mike Davey
1. Scheme overview	6.05-6.15	Mark Wilson/ Ben Binns
1. Overview of the artwork	6.15-6.25	Clare Phillips
1. Overview of the new community centre	6.25-6.35	Diane Hicks and PACT
1. Questions relating to Ironworks	6.35- 7.00	Cllr Mike Davey
1. Questions relating to Timberworks	7.00-7.25	Cllr Mike Davey
1. Contact details for future questions	7.25-7.30	Cllr Mike Davey
1. Meeting close	7.30	

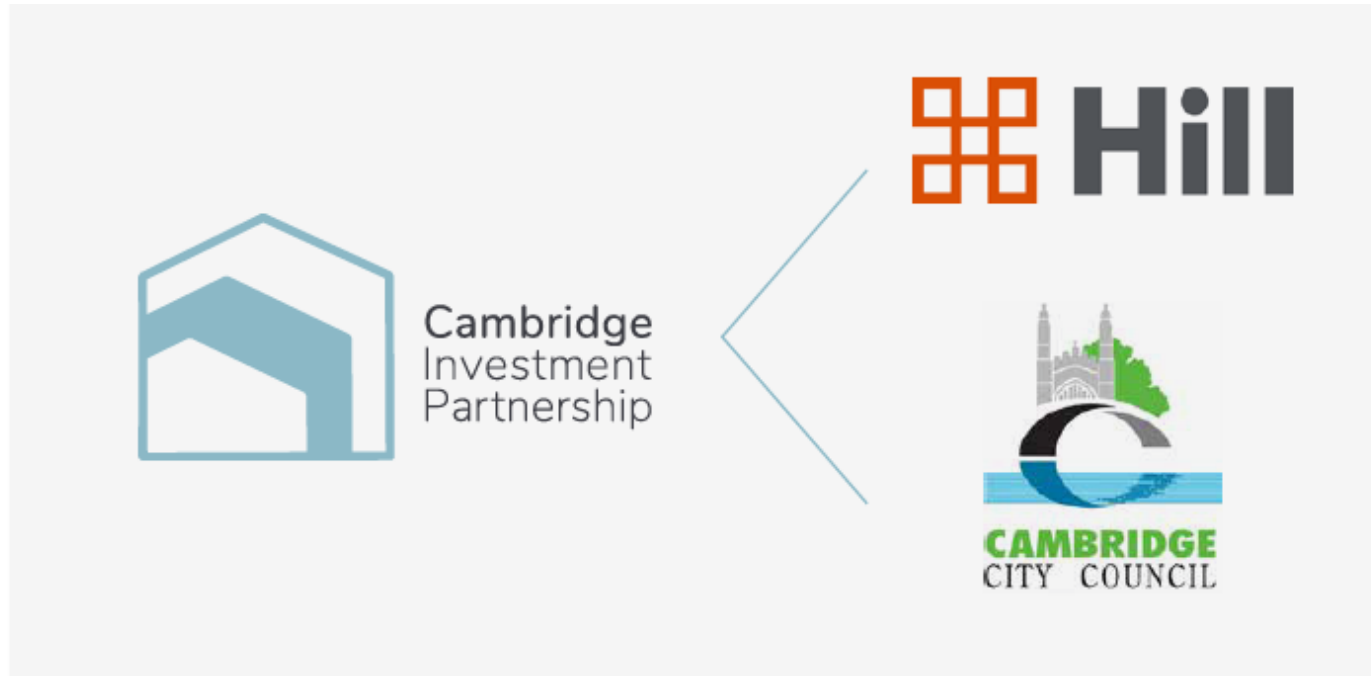
# Purpose of the Briefing

1. Format – brief progress update but Q&A focus
2. Listen and pass on issues and concerns and raise them to the relevant parties within CIP, the Council and Hill
3. Recordings and all FAQ's on website here:

[www.cambridge.gov.uk/get-involved](http://www.cambridge.gov.uk/get-involved)



# Cambridge Investment Partnership



- Joint Venture LLP between Cambridge City Council and Hill Investment Partnership

# Mill Rd, Ironworks



# Scheme Overview

- 118 new Council rented homes 236 in total
- Combined Heat and Power plant room providing heating
- 10 Active and 40 Passive EV charging points within the basement parking
- £200,000 allocated towards public art
- BREEAM Excellent community centre
- Landscaped public parks and children's play areas
- £3.5 million towards local schools, parks, sports centres, Chisholm trail, NHS, open space





# Progress to Date

- Affordable units handed over – 54
- Private Units handed over - 92
- First area of public open space including the play park opened April
- Community Centre Completion due – Autumn 2022
- Traffic Regulation Order (TRO) is to be implemented which will mean no parking will be allowed on any part of the estate roads. Visitor parking will be available in the basement and will be bookable via the Ringo parking app. Charges may apply for visitors
- Scheme Fully complete – November 2022



## Block B04 (Private)





## Block B03 (affordable)



## House (Private)





## Block B08 (Affordable)



# Cromwell Rd, Timberworks



# Scheme Overview

- 118 new Council rented homes 295 in total
- Combined Heat and Power plant for heating to Apartments
- 13 Active and 61 Passive EV charging points within the basement all houses have EV points
- New nursery to meet local need
- Large public park and courtyards with children's play areas
- £3.6 million towards local schools, parks, sports centres, Chisholm trail, NHS, open space adoption





# Progress to Date

- Affordable units handed over – 26
- Private units handed over - 47
- Nursery provider in ongoing discussions
- It is planned to implement a Traffic Regulation Order at Timberworks, to limit parking on estate roads and paths. Visitor spaces will be available which will be bookable via the Ringo app and charges may apply. The area behind Block A is to be managed via either a Automatic Number Plate Recognition cameras or patrols.
- Scheme due to fully complete in March 2023



## Affordable and Private Houses



## Private Housing





## Private Housing



# Key Contacts

- Day to day site concerns  
[residents@hill.co.uk](mailto:residents@hill.co.uk) 0800 0326760
- Specific construction concerns:  
[Nick.milne@Cambridge.gov.uk](mailto:Nick.milne@Cambridge.gov.uk)
- Housing development concerns:  
[Mark.wilson@Cambridge.gov.uk](mailto:Mark.wilson@Cambridge.gov.uk)





# RESONANCE-CAMBRIDGE

Ironworks & Timberworks  
Public art programme

[www.resonance-cambridge.co.uk](http://www.resonance-cambridge.co.uk)



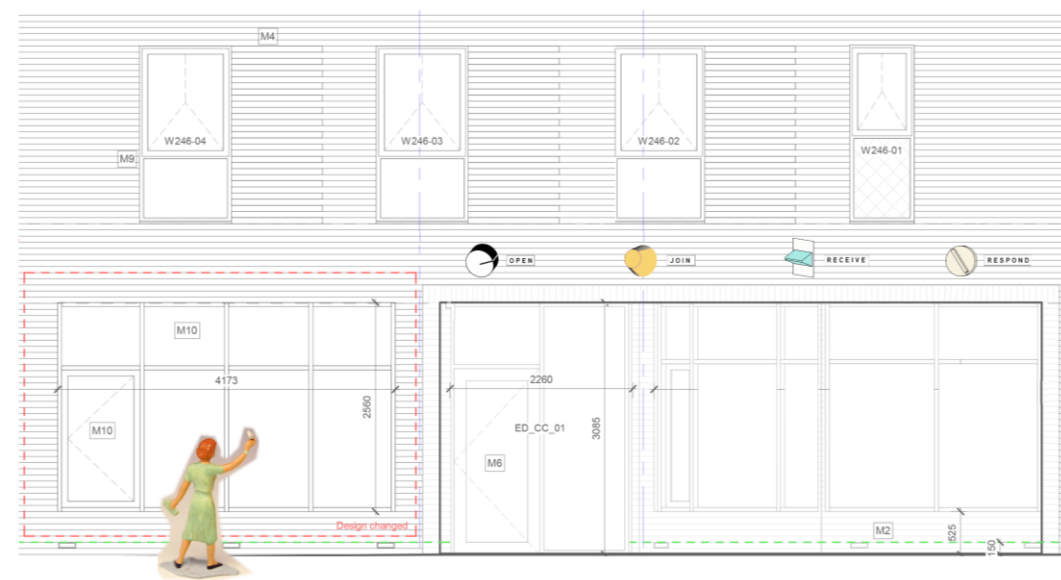
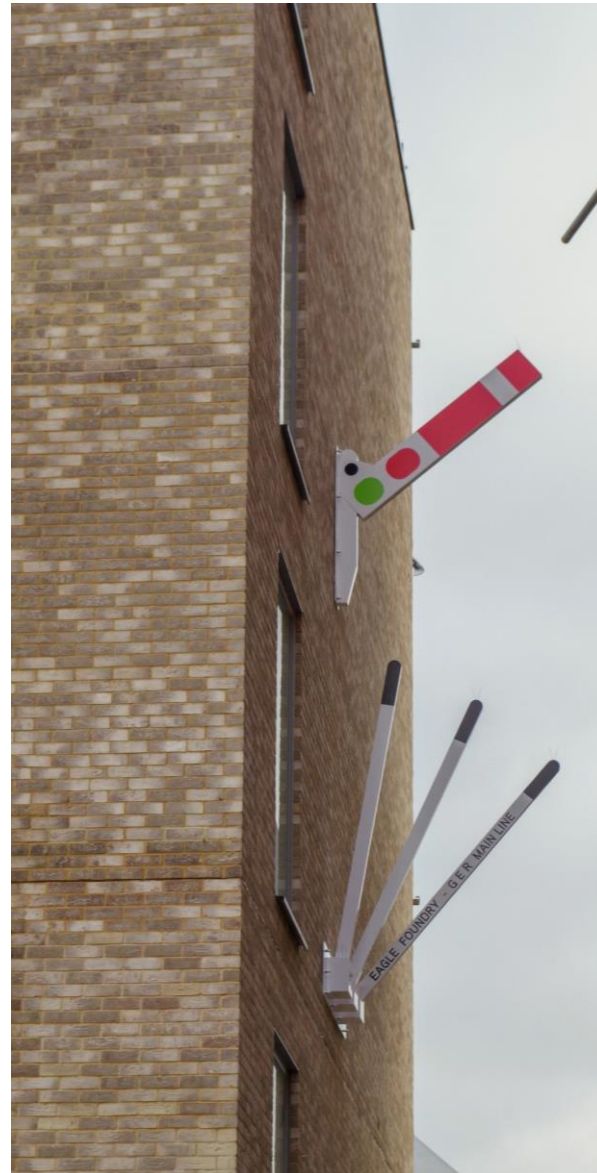
Cambridge  
Investment  
Partnership



CAMBRIDGE  
CITY COUNCIL



# IRONWORKS





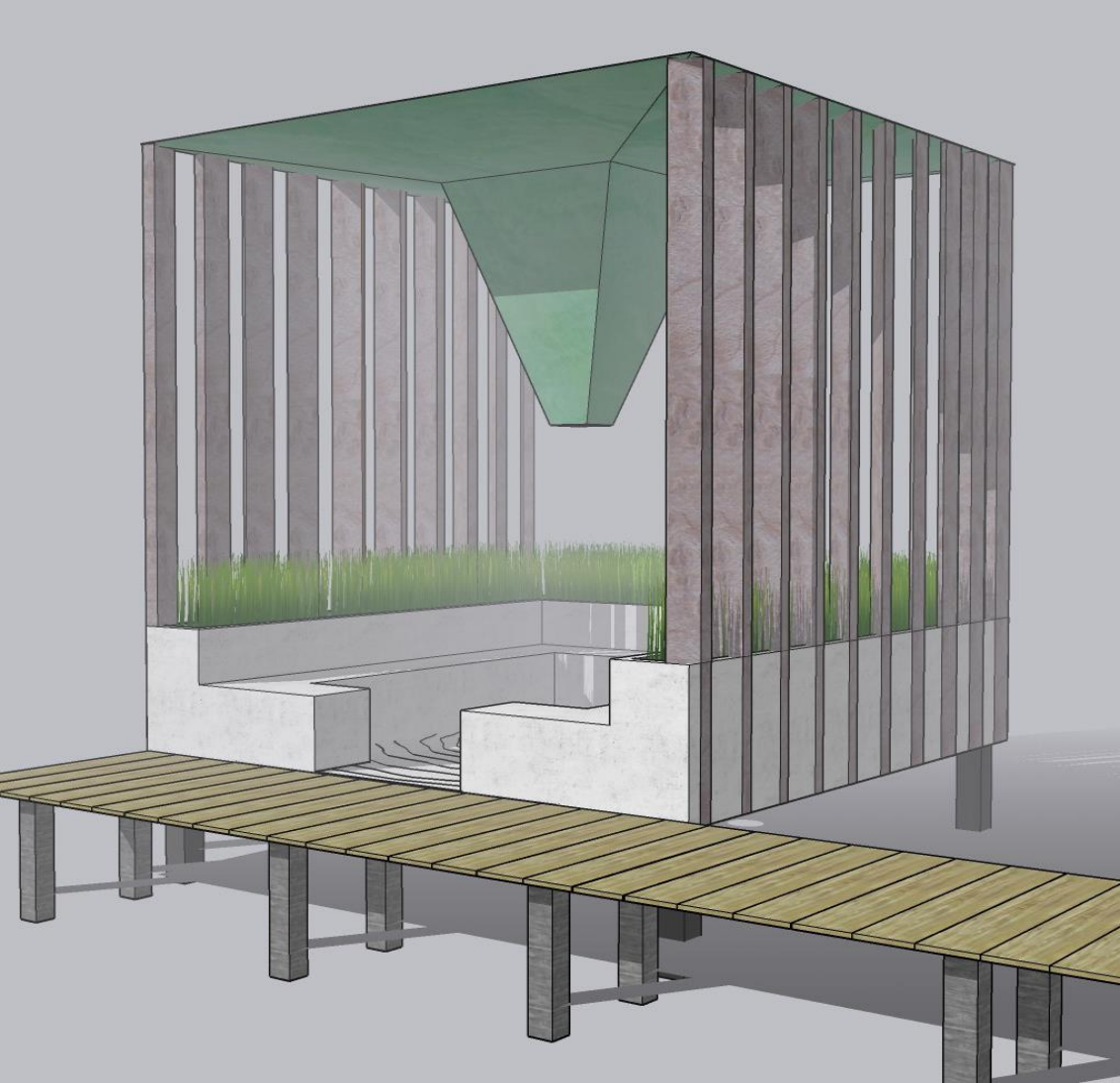




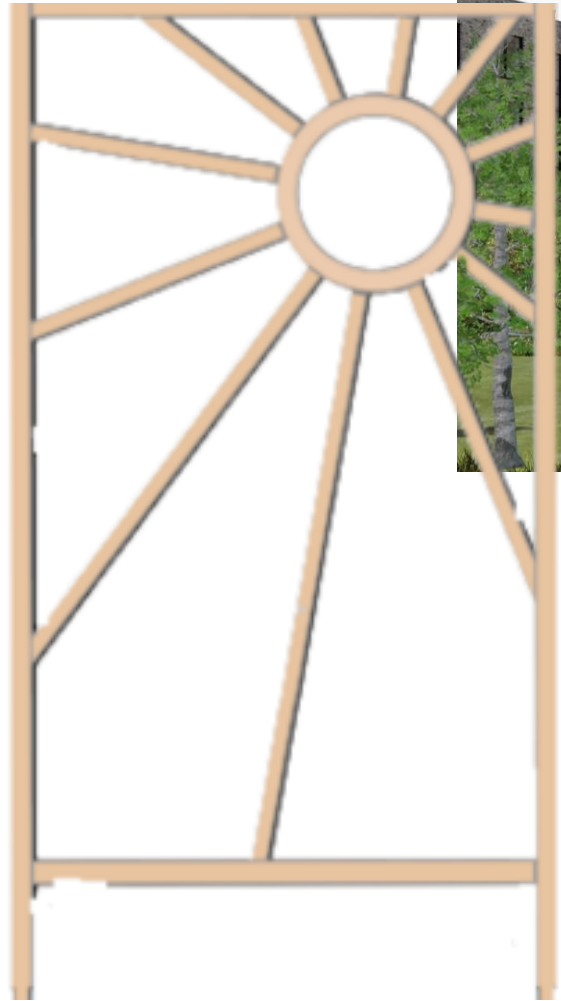




# TIMBERWORKS









near thing feelings far things meanings



# FACILITIES

- One large hall (133m<sup>2</sup>) with a sprung floor and integrated audio-visual equipment. This large space can be divided into two smaller halls (65m<sup>2</sup> and 68m<sup>2</sup>) with a sound-proof folding wall
- Outside is a small enclosed area leading from one of the halls and also accessed independently from an internal corridor
- A fully fitted kitchen with a serving hatch into one of the halls

- A large meeting room which will suit small group work and training (28m<sup>2</sup>)
- There will be some availability of a small room for 1:1 meetings/therapy which will also be used as office space for the centre





# Naming the Centre



- ▶ A public consultation was conducted at the end of 2021 and was publicised online. A range of possible choices of name were proposed with the additional opportunity to offer alternative suggestions. Just under 100 responses were received, the findings of which were collated and submitted to the Council for their consideration.
- ▶ The name of the building has been confirmed as Mill Road Community Centre.

# How will the centre be used?



- ▶ Our KEY AIM is to provide an inclusive, inviting, and thriving centre that meets the needs of the community.
- ▶ We hope this will include activities such as toddler groups, coffee mornings, talks, social events, quizzes etc. that are aimed at community cohesion.
- ▶ We want to create a balanced programme of classes and workshops to help with general health and well-being, including dance, fitness, martial arts, art, yoga, theatre, Brownies etc.
- ▶ We will also need to attract commercial users too to bring in much needed additional income.



# How to get involved:

## ► VOLUNTEER

Volunteers are needed for a range of roles, both prior to opening and after, including:



helping with fund-raising

running activities

helping with community events

publicity and raising awareness

## ► JOIN US

Join our small team so that we can expand our reach – the more people we have on board the more productive we can become

## ► HIRE THE FACILITIES

We need people to express their interest in hiring the facilities for classes, workshops, events etc.

**Contact us:** PACT – [info@pactcambridge.org](mailto:info@pactcambridge.org) Romsey Mill – [admin@romseymill.org](mailto:admin@romseymill.org)

<https://www.cambridge.gov.uk/get-involved-in-the-new-neighbourhoods>

[steph.burwitz@cambridge.gov.uk](mailto:steph.burwitz@cambridge.gov.uk)

