

# West Cambridge Site



Mark Parsons, Planning Manager, Estates Division



Community Forum November 2021

# Outline Application Update

200,000 sqm Academic

170,000 sqm Commercial Research

Food/Drink/Retail

Extension to Sports Centre

Nurseries

Open Space



Resolution to grant approval in July 2021 by the City Council's Planning Committee, subject to the legal agreement for transport mitigation.



# Next Steps

Conclusion of legal agreement

Strategic Planning Conditions

Reserved Matters

Work with Greater Cambridge Partnership to complement strategic schemes

November  
2021

March  
2022

July  
2022



# Construction Update- The Hub

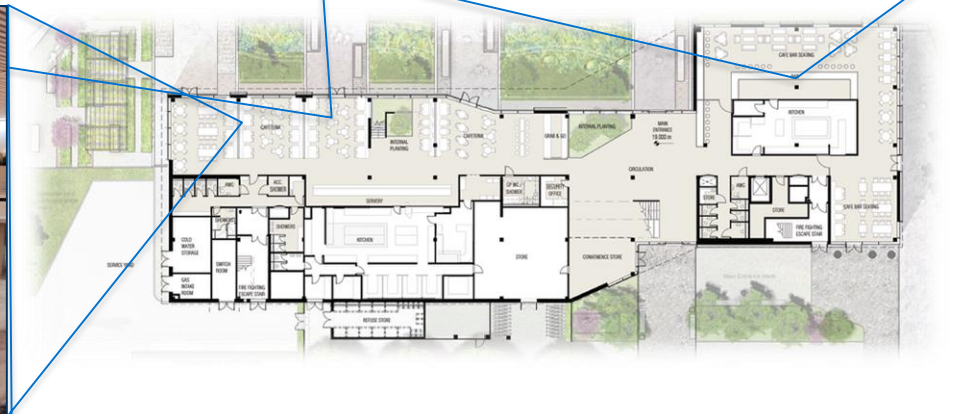
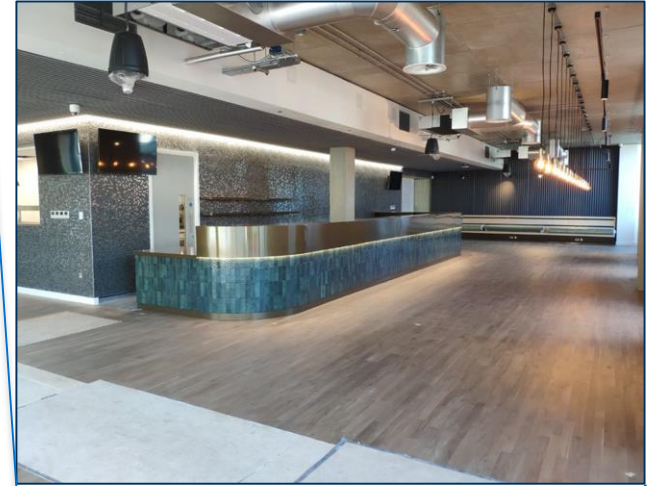
Operational from Easter 2022





# Construction Update- The Hub

H  
U  
B





# Construction Update- Ray Dolby Centre

Opening from Summer 2023





# Construction Update- Ray Dolby Centre

Opening from Summer 2023





# Construction Update- Whittle Extension





# Construction Update- Ray Dolby Centre

## JJ Thomson Ave- Work in several phases 2022

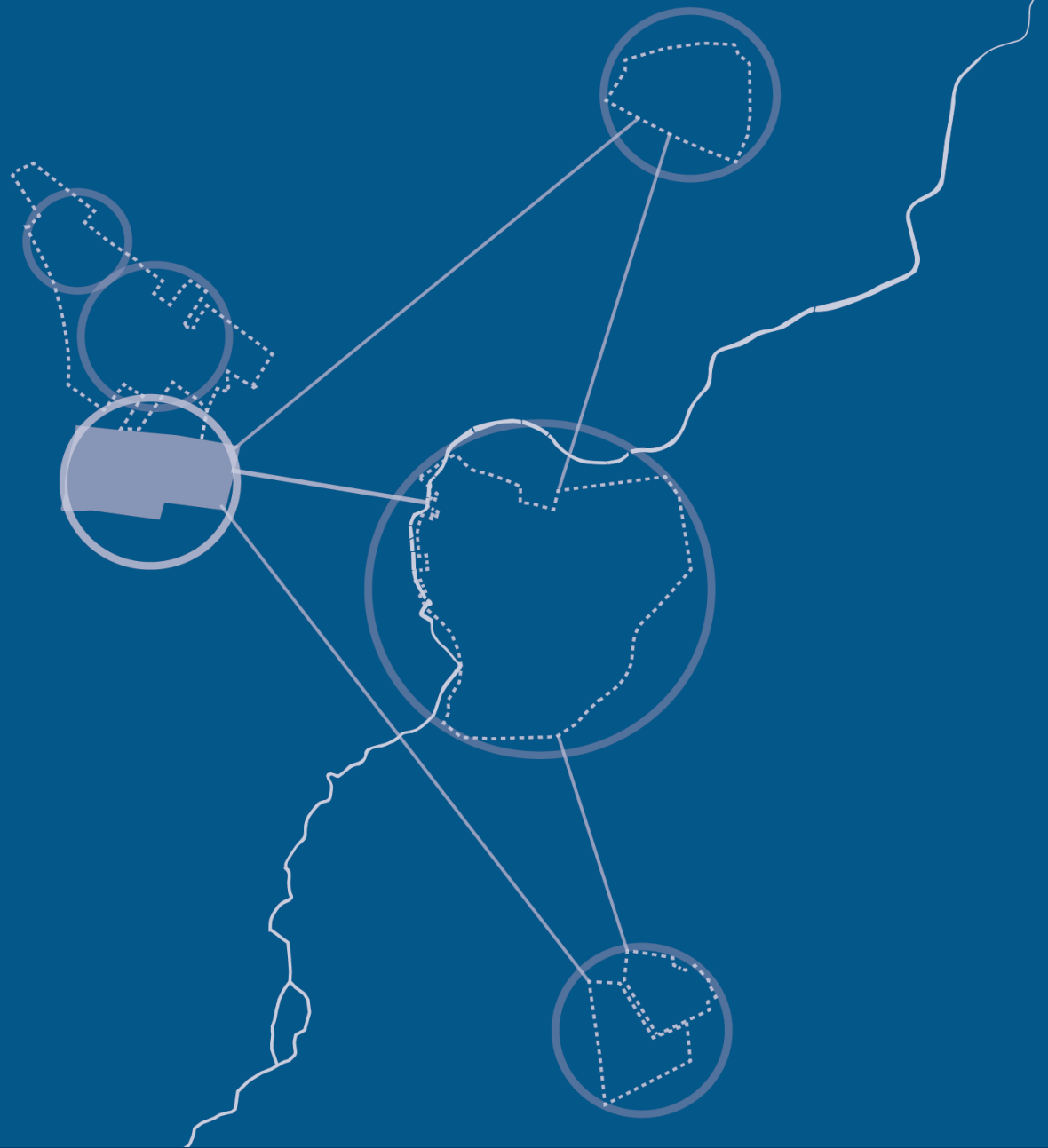


## Wayfinding- Site wide signage





# Questions?





# Masterplan

