

Corn Exchange Street

The street is the major vehicle access and exit for the multi-storey car park.

Corn Exchange Street has probably followed roughly the same line since at least the C16 when it was known as Slaughter Lane. In the C19, the eponymous Corn Exchange was built and the

east side was lined by small shops and inns. Its character was entirely changed, however, (and not for the better) in the C20 with the development of Lion Yard, the car park and the hotel.

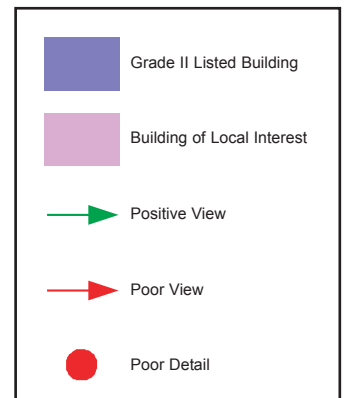
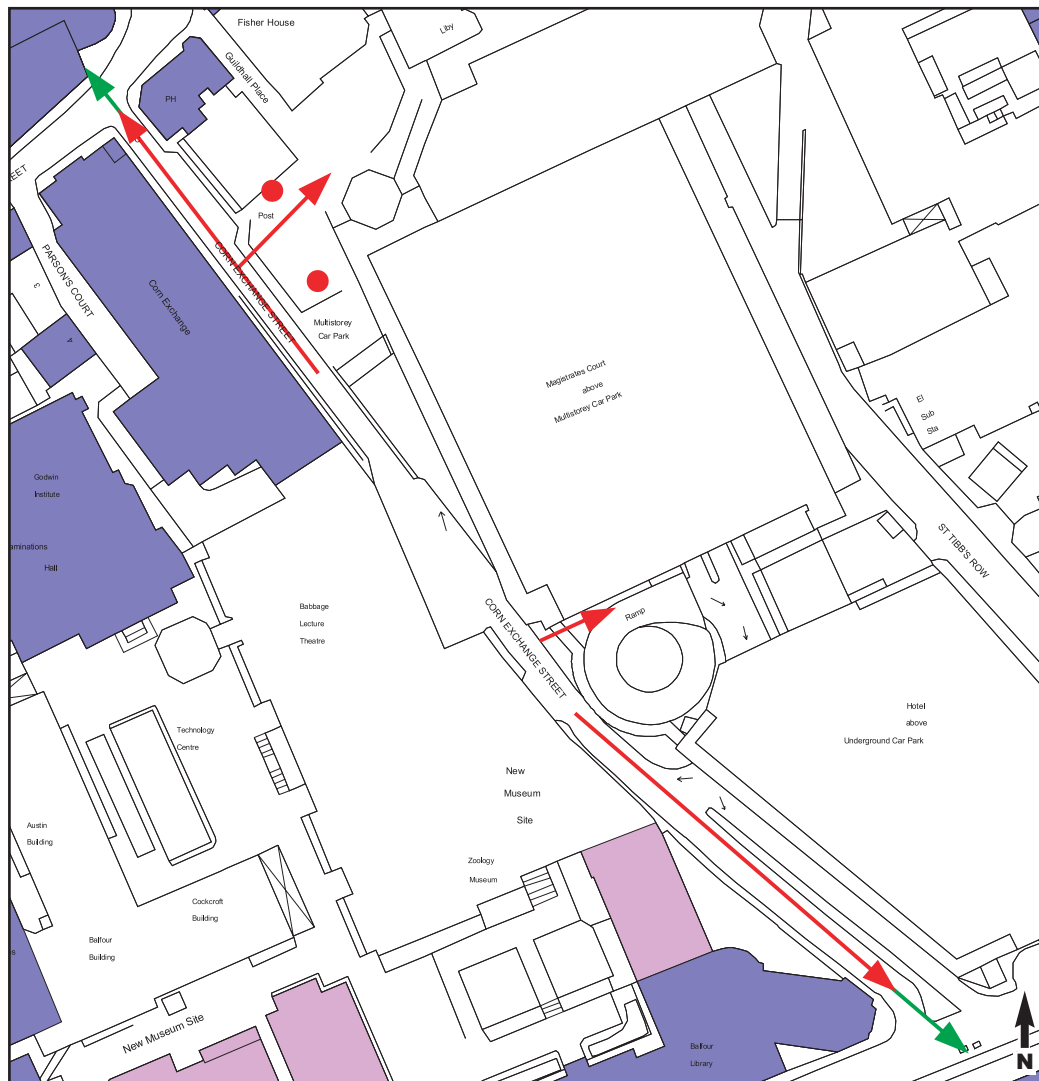


View north along Corn Exchange Street

SIGNIFICANCE • LOW

General Overview

Corn Exchange Street is a very busy pedestrian and cycle route although the form of the street has largely been designed for the convenience of the car. The street is the major vehicle access and exit for the multi-storey car park and can become very busy with queuing traffic. Building uses along the street include a concert hall, university buildings, bar, hotel and car park. The gap site is generally used for the parking of coaches and crew vehicles for the Corn Exchange.



Red Cow Public House



Zoology Laboratories

(c) Crown copyright (Licence No.100019730)

1 : 1,250

Townscape Elements

- > Over-riding impression of street is of a canyon due to narrowness and height of buildings.
- > One of few streets in city to be on a slight hill.
- > Views are blocked by Zoology extension building or car park circulation ramp.
- > Original building line defined by buildings at north end of street; continued by wall of Zoology extension building and part of car park.
- > Vistas along street generally not very good although both ends are enclosed by good buildings - Guildhall and Sedgwick Museum.
- > Street lacks any soft landscaping though views of trees in Fisher Square can be obtained across gap site.

Redevelopment Opportunities

> Grand Arcade

Corn Exchange Street is one of the most unpleasant streets within the central area, particularly for pedestrians. The redevelopment of the car park as part of the Grand Arcade development will create the opportunity for more aesthetically pleasing buildings and a much more attractive and safer pedestrian / cycle route with more active building frontages. The separation of pedestrians and vehicles currently means that pedestrians walk through an unpleasant tunnel at the north end and along a narrow island at the south end. An unpainted railing prevents pedestrians from falling onto the carriageway at the side of the Corn Exchange.

> Gap Site

The gap site will also be developed as part of the Grand Arcade development, providing improved facilities for recycling and cyclists. The gable end of Soul Tree, which backs onto the gap site, has various unsightly cabinet boxes attached and the recycling area is particularly unattractive.

Streetscape Enhancement

It is important that the works undertaken as part of the Grand Arcade development also include improvements to the other streetscape elements such as the carriageway and footway surfaces, signage, lighting, etc. to make this street more appropriate for its position in the heart of the city centre. The street surfaces are currently a mixture of buff and brown pavers and concrete slabs on the footways with black-top on the road surfaces which are dominated by yellow lines and other road markings. There are also various vehicle signs. Streetlights are building mounted and generally unobtrusive, although the CCTV camera pole at the south end of the street is very prominent due to the slope of the street.

Archaeology / Historic Topography

Anticipated deposit depth varies between 2.00m and 3.00m.

Potential for prehistory is low

Potential for Roman is low to moderate

Potential for medieval is high

Corn Exchange Street straddles the line of the medieval King's Ditch. By 1574 or earlier the ditch appears to be filled in at this point, earlier it was probably bridged. Outside the ditch, to the east of Slaughterhouse Lane as it was called, lay the Beast Market and slaughter yard. To the west was the precinct of the White Friars monastic house, itself straddling the ditch. On the east side, inside the ditch, evidence has been found for earlier ditches, possibly predecessors of the later one, and the development of medieval settlement. Several pieces of roman pottery have been found, but no surviving features.

Building No. / Name	Status	Age	Height (storeys)	Wall Materials	Roof Form / Materials	Architect	Notes
The Red Cow Public House	Listed Grade II	1898	2 + attic	red brick and timber-frame and plaster	plain tile	R. Reynolds Rowe	
Soul Tree	none	1970s	2 + roof storey	red brown brick	lead		changed use from Job Centre in 1990's
Lion Yard Car Park	none	1975	3	buff brown brick and concrete	fibre-cement slate	Arup Associates	
Crowne Plaza Hotel	none	c1991	4 + attic	buff brick, applied render	fibre-cement	JT Design / Build	
Zoology laboratory	Listed Grade II	1900-4	3 + basement	ashlar	flat	E.S. Prior	
Zoology extension	BLI	1934	4 + basement	yellow brick	flat	Murray Easton	
Computer laboratory and tower	none	1971	4 tower: 10	concrete, lead and brick	flat	Arup Associates	
The Corn Exchange	Listed Grade II	1875	2 + attics	grey gault brick, tiled bands	glass and cast-iron	R. Reynolds Rowe	