

Cambridge City Community Safety Partnership



2011/12 Quarter Two Crime & Disorder Report

AUTHOR:	Cambridgeshire County Council
CONTACT NO:	01223 715310
DATE:	November 2011
PRODUCED FOR:	Cambridge City Community Safety Partnership

Overall Crime Update

NB: Given the timing of the meeting the following report is based on crime data up to and including October 2011.

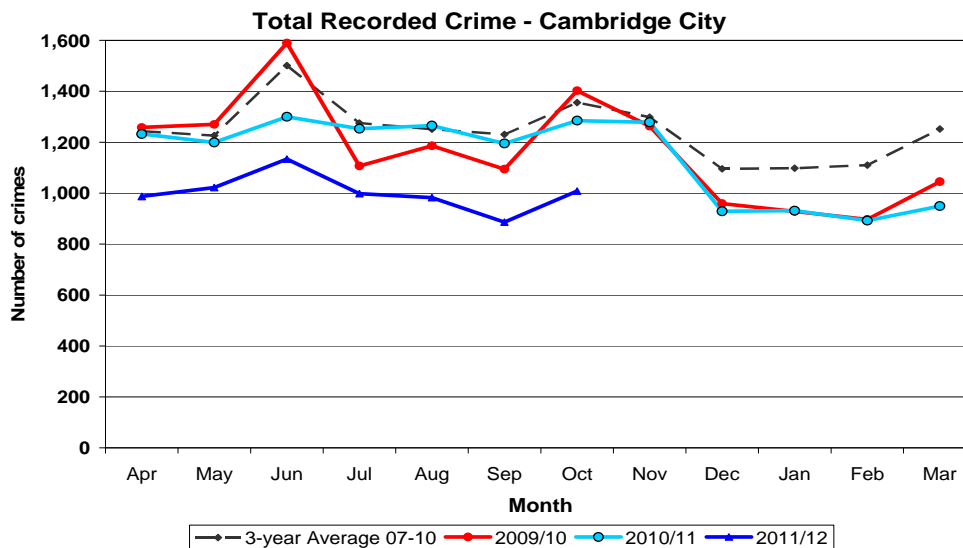
Recent Changes

The following changes have been seen in recorded crime for the year to date (Apr-Oct):

- Total crime reduced by 20% (a change of 1,716 offences)
- Dwelling burglary is down by 51% (a change of 268 offences)
- Total violent crime has decreased by 22% (a change of 398 offences)
- A 15.5% reduction has been recorded in criminal damage (or 137 fewer offences)
- Theft of pedal cycles reduced by 30% (a reduction of 610 offences)
- Total drug offences recorded an increase of 37% (or 108 more offences)
- Theft from the person increases by 63% or 117 offences

For a more detailed breakdown see appendix 1

Chart 1: Total recorded crime for Cambridge City



Cambridge City is in position 9 of 15 of its most similar group with a rate of total crime slightly above the group average.¹ Overall the CSP is doing well with most crime types reducing. A peak in cycle theft was seen in October as expected. Cycle crime accounted for approximately a quarter of total crime in October 2011. However, the number of offences in this October was lower than previous years.

Areas of Concern

There are no areas of concern for the partnership from quarter two.

It is worth the partners noting typically dwelling burglary figures increase between November and January.

¹ iQuanta data November 2010 to October 2011

Appendix 1: CADET - Selected Highlights

Cambridgeshire Constabulary - Recorded Crime Data

Select Area:

Cambridge City CSP

Return to:

Main Menu

If inaccurate dates are entered in the period searches (e.g. if the end date precedes the start date) all cells will display zeros.	PI / NI No	Single Month		Numeric Change	Apparent Change	Earlier Period		Later Period		Numeric Change	Apparent Change
		From	To			From	To				
		Sep-11	Oct-11	Apr-10	Oct-10	Apr-11	Oct-11				
All Crime		886	1,008	122	+ 13.8%	8,729	7,013	-1,716	- 19.7%		
BCS Comparator Crime		536	582	46	+ 8.6%	5,475	3,972	-1,503	- 27.5%		
Serious Acquisitive Crime	5.2 / 16	100	81	-19	- 19.0%	1,320	693	-627	- 47.5%		
Burglary Dwelling		24	32	8	+ 33.3%	521	253	-268	- 51.4%		
All Robbery		9	5	-4	- 44.4%	127	47	-80	- 63.0%		
Vehicle Crime		67	44	-23	- 34.3%	672	393	-279	- 41.5%		
Aggravated vehicle taking		1	1	0	=	6	3	-3	- 50.0%		
Theft from vehicle		59	37	-22	- 37.3%	560	327	-233	- 41.6%		
Theft of a Vehicle		7	6	-1	- 14.3%	106	63	-43	- 40.6%		
Handling Stolen Goods		0	3	3	No Calc	21	17	-4	- 19.0%		
Most Serious Violence	5.1 / 15	13	11	-2	- 15.4%	59	62	3	+ 5.1%		
Homicides		0	0	0	No Calc	1	1	0	No Calc		
Wounding Endangering Life		10	3	-7	- 70.0%	35	36	1	+ 2.9%		
Grievous Bodily Harm without Intent		3	8	5	+ 166.7%	18	25	7	+ 38.9%		
Assaults With Less Serious Injury	5.3 / 20	52	59	7	+ 13.5%	536	378	-158	- 29.5%		
All Recorded Violence with Injury		65	70	5	+ 7.7%	595	440	-155	- 26.1%		
Public Fear, Alarm or Distress		36	20	-16	- 44.4%	281	242	-39	- 13.9%		
Serious Sexual Offences		6	17	11	+ 183.3%	56	72	16	+ 28.6%		
Rapes		0	8	8	No Calc	21	23	2	+ 9.5%		
Sexual Assaults		4	9	5	+ 125.0%	35	45	10	+ 28.6%		
Other Serious Sexual Offences		2	0	-2	- 100.0%	0	4	4	No Calc		
All Violent Crime		206	196	-10	- 4.9%	1,813	1,419	-394	- 21.7%		
All Violence Against the Person		187	170	-17	- 9.1%	1,614	1,286	-328	- 20.3%		
All Sexual Offences		10	21	11	+ 110.0%	72	86	14	+ 19.4%		
All Robbery		9	5	-4	- 44.4%	127	47	-80	- 63.0%		
Criminal Damage		84	78	-6	- 7.1%	882	745	-137	- 15.5%		
All Damage to Dwellings		20	17	-3	- 15.0%	183	164	-19	- 10.4%		
All Damage to Other Buildings		6	10	4	+ 66.7%	124	85	-39	- 31.5%		
All Damage to Vehicles		37	35	-2	- 5.4%	364	292	-72	- 19.8%		
All Other Damage		20	13	-7	- 35.0%	189	175	-14	- 7.4%		
Arson		1	3	2	+ 200.0%	22	29	7	+ 31.8%		
All Theft and Handling		498	598	100	+ 20.1%	4,725	3,843	-882	- 18.7%		
Shoplifting		89	113	24	+ 27.0%	846	745	-101	- 11.9%		
Theft from the Person		57	62	5	+ 8.8%	187	304	117	+ 62.6%		
Theft in a Dwelling		4	12	8	+ 200.0%	95	76	-19	- 20.0%		
Theft of Pedal Cycles		185	243	58	+ 31.4%	2,011	1,401	-610	- 30.3%		
Other Classified Thefts & Handling		96	123	27	+ 28.1%	888	912	24	+ 2.7%		
Vehicle Interference		0	1	1	No Calc	26	12	-14	- 53.8%		
All Racially Aggravated Crime		5	3	-2	- 40.0%	59	37	-22	- 37.3%		
All Racially Aggravated Violence		5	3	-2	- 40.0%	57	34	-23	- 40.4%		
All Racially Aggravated Harassment		0	0	0	No Calc	0	0	0	No Calc		
All Racially Aggravated Damage		0	0	0	No Calc	2	3	1	+ 50.0%		
All Drugs Offences		33	48	15	45.5%	290	398	108	37.2%		
Drugs (Trafficking)		6	1	-5	-83.3%	35	36	1	2.9%		
Drugs (Simple Possession)		27	47	20	74.1%	254	362	108	42.5%		
Drugs (Other Offences)		0	0	0	No Calc	1	0	-1	-100.0%		

Categories coloured white constitute a breakdown of the category in grey immediately above it.

Place the mouse pointer over each category title to view a list of the Home Office Classifications included within them.



Source: Cambridgeshire Constabulary, Corporate Performance Department