

NOT PROTECTIVELY MARKED

# Neighbourhood Profile Update Cambridge City South Neighbourhood

July 2011



**Steve Kerridge,**  
Neighbourhood Policing  
Inspector

**Lynda Kilkelly,** Safer  
Communities Manager,  
Cambridge City Council



## CONTENTS

<b>1. INTRODUCTION</b>	<b>2</b>
Aim	2
Methodology	2
<b>2. PREVIOUS PRIORITIES &amp; ENGAGEMENT ACTIVITY</b>	<b>3</b>
Previous priorities	3
Engagement activity	4
<b>3. EMERGING ISSUES</b>	<b>5</b>
Neighbourhood trends	5
Trumpington	5
Cherry Hinton	6
Queen Edith	8
<b>4. CURRENT CRIME AND INCIDENT LEVELS</b>	<b>11</b>
<b>5. CURRENT CRIME AND INCIDENT LEVELS IN NEIGHBOURHOOD, BY WARD</b>	<b>12</b>
<b>6. TOP 10 ASB INCIDENT TYPES IN THE CITY SOUTH NEIGHBOURHOOD, BY WARD</b>	<b>13</b>
<b>7. RECOMMENDATIONS</b>	<b>14</b>

## 1. INTRODUCTION

### Aim

The aim of the Neighbourhood profile update is to provide an overview of action taken since the last reporting period, identify ongoing and emerging crime and disorder issues, and provide recommendations for future priorities and activity in order to facilitate effective policing and partnership working in the area.

The document should be used to inform multi-agency neighbourhood panel meetings and neighbourhood policing teams, so that issues can be identified, effectively prioritised and partnership problem solving activity undertaken.

### Methodology

This document was produced using the following data sources:

- Crime and Incident data from February 11 – May 11 and as a comparison data from October 10 – January 11 and February 10 – May 10.
- Information from the Neighbourhood Policing teams June 2011.
- Environmental data from Cambridge City Council for the period February 2011 – May 2011, compared with the same period the previous year.

### Anti-Social Behaviour (ASB) in Cambridge City

**Please note that due to changes in the Police incident reporting system we will now be using the final call type rather than the Closure Class Definitions in the summary tables.** The specific final call types for those incidents defined as ASB are included below

## 2. PREVIOUS PRIORITIES & ENGAGEMENT ACTIVITY

### Previous Priorities

At the neighbourhood panel meeting on 3rd March 2011, the following issues were adopted as priorities. The tables below summarise action taken and the current situation regarding the priorities which were set:

<b>ASB in Cherry Hinton High Street</b>	
<b>Objective</b>	Respond to an increase in reports of ASB, mainly groups of youths gathering outside Tesco Express in Cherry Hinton High Street by dispersing youths and provide reassurance to staff and public.
<b>Action Taken</b>	<p>This area has been regularly and frequently patrolled over the last panel period. This consists of over 50 individual patrols lasting between 10 and 90 minutes at a time. This has resulted in:-</p> <ol style="list-style-type: none"> <li>1. Numerous individuals being asked to move on or disperse.</li> <li>2. Two youths dealt with by way of Formal Warnings for Cannabis Possession.</li> <li>3. Several moped riders being dealt with for a variety of offences including, no insurance, riding without a helmet, riding other than in accordance with their license and other document offences.</li> </ol>
<b>Current Situation</b>	<p>ASB in Cherry Hinton is as expected at the moment compared to the preceding panel period despite the warmer weather and longer days. The level of ASB is the same as the equivalent period last year. Communication received by the local neighbourhood team about the issues on the High Street has been generally positive.</p> <p>In the most recent weeks there have been reports that disruptive groups of youths now occupy the Car Park by the Fisher's Lane Doctor's Surgery. The local NPT officers are aware of this and now include the area around the surgery and the Village Centre in their ASB patrols.</p>
<b>Continue or Discharge?</b>	We recommend that the committee continue with this priority.

<b>Dwelling Burglary - Trumpington Beat</b>	
<b>Objective</b>	To reassure public and prevent further offences through high profile patrols but also arrest and prosecute offenders through covert patrols.
<b>Action Taken</b>	<p>The area has been regularly and frequently patrolled over the last panel period using a combination of hi-visibility patrols to deter offenders and plain clothes patrols to apprehend offenders and gather intelligence.</p> <p>The regular Neighbourhood Surgeries at Waitrose have been supplemented with staff from the Community Safety Team who have been available to provide additional advice and assistance on burglary prevention.</p> <p>A leaflet drop in the areas identified as being most at risk was carried out offering home owners the opportunity to book a security survey with the Community Safety Team and providing some sound practical advice on deterring thieves from targeting their homes. This has also been a regular feature in our E-Cops messages. A briefing was delivered to the local Neighbourhood Watch co-ordinators highlighting the issue and asking for extra vigilance and information.</p>
<b>Current Situation</b>	Dwelling Burglary in Trumpington has fallen back down to the level seen prior to the previous panel period and is currently much reduced compared to the previous period and also compared to the same period last year. Opportunities to apprehend offenders and detect offences have been less forthcoming but the level of dwelling burglary appears to have returned to, and potentially fallen below, the expected baseline.
<b>Continue or Discharge?</b>	We recommend that the committee discharge this priority.

### **Engagement Activity**

Engagement events permitting members of the public to meet the City South and other Cambridge City Neighbourhood Policing Teams are listed on the Constabulary's website.

They include monthly surgeries at Waitrose Trumpington, Addenbrooke's Hospital Concourse and Cherry Hinton Village Centre.

For more private matters, officers will be happy to arrange a meeting at your convenience or discuss matters via telephone.

For further details please visit [www.cambs.police.uk](http://www.cambs.police.uk) and look for the "My Neighbourhood" link or call 0345 456 456 4.

### 3. EMERGING ISSUES

#### Neighbourhood trends

Overall, during the four-month period, total crime in the City South neighbourhood has been reduced by around 20% against the previous period and the same period last year. Reductions were observed across most crime types, particularly in dwelling burglary, violent crime and robbery.

At 345 incidents reported, anti-social behaviour (ASB) levels across the neighbourhood have seen an increase of 7 incidents from the previous period. In spite of this, incidents levels remain lower than the same period last year in which a total of 390 incidents were recorded.

#### Trumpington

- Total crime in Trumpington has seen a reduction of ~65 offences on both the previous period and the same four month period last year.
- This notable reduction was largely seen in dwelling burglary offences (down to 7 from 16 in the previous period), violent crime (18 from 40), vehicle crime (9 from 23), and cycle theft (29 from 55).
- Despite the reduction in dwelling burglary offences, there was a series of 4 offences reported throughout May whereby an unknown offender has entered various properties on Trumpington Road, Bishops Road, Anstey Way and Chaucer Road through insecure means. These offences largely occurred throughout early evening and overnight hours.
- There has been a 57% reduction in theft from vehicle offences compared with the previous 4 month period. Index plates were targeted in two offences at the Park and Ride in April. This follows an offence the previous day at the location whereby an unknown offender has entered a vehicle through force and an attempt was made to steal the vehicle. An additional series of offences has been seen in the Bateman Street and Bentinck Street area, whereby an unknown offender has smashed vehicle windows to gain entry.
- Cycle theft offences have also seen a decrease in levels, with 29 offences reported compared with 55 reported in the previous period. Bikes were stolen mainly at the town end of Hills Road and its branching routes.
- ASB incidents have continued to decrease during this four month period with only 100 incidents reported, compared with 113 and 146, in the previous period and same period last year respectively. Abandoned vehicles were more of an issue during the period with 11 reports compared with 6 in the previous period. The majority of these

vehicles were abandoned in and around Shelford Road, Hauxton Road, Foster Road and Church Lane. Hills Road recorded a total of 12 incidents during the period, however, these all appear unrelated. There were 8 incidents reported on Foster Road, the majority of which were unrelated, however, there were 3 incidents relating to an ongoing neighbour dispute. In addition, there have only been 3 incidents reporting people sleeping rough during the 4 month period. Rough sleeping was noted at the Queen Anne car park once, and twice on Warren Close.

### **Environmental Issues**

- Between February and May 2011, there were 6 reports of abandoned vehicles in the ward compared with 8 during the same period the previous year. This included 4 vehicles, which were not on site following inspection. 1 CLE26 notice was issued to the offender on behalf of the DVLA for not displaying road tax on a public highway, which will result in a fine issued by the DVLA. There were no specific hotspots during either period.
- Between February and May 2011, there were 32 reports of fly tipping in the ward compared with 26 during the same period the previous year. There was sufficient evidence to issue 5 formal warning letters to domestic offenders. Waste transfer documentation was requested from 2 trade offenders. A domestic waste incident is still pending further investigation. Anstey Way (5), Russell Court (4), Bentinck Street (3), George IV Street (3) and Hills Road (3) were the main hotspots during the current reporting period. Anstey Way (5), Gilpin Place (3) and Russell Court (3) were the main hotspots during the previous year.
- Between February and May 2011, 21 derelict cycles were dealt with compared with 19 during the same period the previous year. Princess Court (4) and Hills Road (3) were the main hotspots during the current reporting period. Hills Road (4) was the hotspot during the previous year.
- Between February and May 2011, 3 needles were reported compared with 58 during the same period the previous year. The 3 were removed from Princess Court. During the previous reporting period 31 needles were removed from Anstey Way, which were found in various locations near number 26. There were also 22 needles removed from Hanover Court, which were near the lift. Both of these finds were one offs.

### **Cherry Hinton**

- The total level of offences reported in Cherry Hinton has largely stayed consistent with the previous period but lower than the same period last year. In particular, reductions were noted in violent crime and robbery.
- Dwelling burglary offences remain low with only 6 reported over the four month period. This accounts for ~70% decrease in offences in the ward when compared to the same period last year which recorded 21 offences. The majority of the offences were evening to overnight

offences, although no links could be drawn between the MO employed in each offence.

- A school has been targeted twice, once in April, where unknown offender(s) have stolen aluminium piping and again in May, where unknown offender(s) have stolen electrical equipment including a number of power tools, cameras, and a mobile phone.
- Theft of vehicle offences have remained at the same level as the previous period with 8 offences reported. The majority of the offences occurred in March (6 offences) and the remaining offences were reported in April. In fact, 5 of the offences in March occurred over two nights at the end of the month. Furthermore, offender(s) are highly preferential towards mopeds and motorcycles, which were targeted in 6 offences. These offences were localised to the High Street, Chelwood Road, Augers Close and Iver Close.
- Thefts from vehicle offences, on the other hand, have seen an increase in relation to the previous period, up from 2 offences to 17. This increase is the result of two series of offences targeting the Business Parks in the vicinity of Coldhams Lane (e.g. Norman Way and Church End). Unknown offender(s) have targeted handbags in afternoon offences using a variety of methods including smashing windows, forcing doors and exploiting insecure vehicles. Furthermore, another series was observed whereby unknown offender(s) have stolen catalytic converters from vehicles parked at the locations. These were typically, late evening/overnight offences, targeting multiple vehicles. Note: No further offences of the above nature were reported in May.
- An increase was observed in cycle thefts during the 4 month period with 14 offences reported which is consistent with the same period last year. Almost half the offences occurred in the month of April (6 offences). The majority of the offences were situated on Cherry Hinton High Street and its connecting routes.
- There were seven theft of vehicle offences in this period compared to 3 offences in both the previous period and the same period last year. Offenders didn't appear to be selecting specific vehicles and a minibus, a pickup, moped and small cars were all targeted.
- ASB levels remains consistent with the previous period and the same period last year with 129 incidents reported over the last 4 months. The highest level of incidents were reported on the High Street (22 incidents), which were mostly either alcohol-related or youth-related nuisance. A further 10 incidents were reported on Bliss Way, which

mostly relate to neighbour disputes over noise and anti-social behaviour from an individual who has subsequently been evicted. Furthermore, 6 incidents were reported on Colville Road in February (1 incident), March (4) and April (1). The majority of these incidents referred to a large group of youths riding around on mopeds, being noisy and inconsiderate, causing local residents to feel threatened. The number of vehicles being abandoned has doubled during the 4 month period to 10 from 5 in the previous period. These were mostly concentrated within Cherry Hinton (south of the disused railway).

### **Environmental Issues**

- Between February and May 2011, there were 16 reports of abandoned vehicles in the ward compared with 11 during the same period the previous year. This included 5 vehicles, which were not on site following inspection and 3, which were subsequently claimed by their owners. 2 vehicles were also impounded on behalf of the DVLA for not having valid road tax, both of which were subsequently destroyed following non-payment of the DVLA fine. Teversham Drift (3) was the hotspot during the current reporting period. There were no specific hotspots for the same period the previous year.
- Between February and May 2011, there were 32 reports of fly tipping in the ward compared with 27 during the same period the previous year. There was insufficient evidence to issue formal warning letters. Colville Road (6), Teversham Drift (5) and St Bedes Crescent (3) were the main hotspots during the current reporting period. Bliss Way (4) and St Bedes Crescent (3) were the main hotspots during the previous year.
- Between February and May 2011, 17 derelict cycles were dealt with compared with 16 during the same period the previous year. Cherry Hinton High Street (8) was the hotspot during the current reporting period. Ainsdale (4), Burnham Close (3) and St Bedes crescent (3) were the main hotspots during the previous year.
- Between February and May 2011, 12 needles were reported compared with 1 during the same period the previous year. 7 were removed from Mill End Road. There were no specific hotspots for the same period the previous year.

### **Queen Edith**

- Comparatively, Queen Edith has seen a reduction in offences, with 150 reported against 184 in the previous period as well as 176 reported in the same period last year. Decreases in dwelling burglary offences, theft from vehicle offences and cycle theft were largely responsible for the overall reduction.
- An 81% reduction was observed in dwelling burglary offences over the four month period with only 4 offences reported. Furthermore, this is also lower than the same period last year which recorded 14 offences.

Of the 4 offences reported, an offender was arrested and charged with 1 offence. The remaining offences differed in times of day and MO and do not appear linked.

- Violent offences in Queen Edith remain consistent with the previous 4 month period with 28 offences reported. This is comparatively lower than the 35 reported in the same period last year. Offenders were arrested and charged in 15 of these offences.
- Motorcycles/mopeds were targeted in all 3 thefts of vehicle throughout February and March. Offences were situated at the Hospital site, Holbrook Road, and Robinson Way.
- Theft from vehicle offences have more than halved, from 18 reported in the previous period to 8 offences. The only trend of note was offender(s) targeted index plates in three offences occurring in February, March and April. These offences were located at a car park in the hospital, on Marshall Road and Queen Ediths Way respectively.
- Over the four month period, 34 cycles were stolen. Despite a reduction in theft of pedal cycle offences in comparison to the previous period, offences remain consistent with the same period last year. Notable trends include the theft of secured cycles. This was seen when 3 cycles were stolen in April and May on Blinco Grove. In addition, 2 shed burglaries were also committed on Blinco Grove in February and April targeting the cycles stored within. A further 2 bikes were stolen from properties on Cavendish Avenue (parallel to Blinco Grove), which were both reported to have been secured. In addition, cycles secured in cycle racks at an educational facility on Long Road was repeatedly targeted a total of 5 times in the months of March and May. The highest level of cycle thefts was observed on Hills Road, 7 of which targeted cycles parked on the Hospital site, with the remaining 2 offences occurring at an educational facility.
- Two theft from shop offences were reported during the period, both of which occurred at business premises on the Hospital site. No offences were reported in the previous period and only 1 offence was reported in the same period last year.
- ASB levels in Queen Edith have risen to 116 incidents over the four month period from 104 previously. This is exactly the same level recorded in the same period last year. A fifth of the incidents were reported on Hills Road (23), with 12 incidents relating to the Hospital. Gunhild Way recorded 10 incidents, the majority of which were related to youths and/or their participation in vehicle nuisance. There were 9 incidents reported on Mowbray Road which were mainly related to a

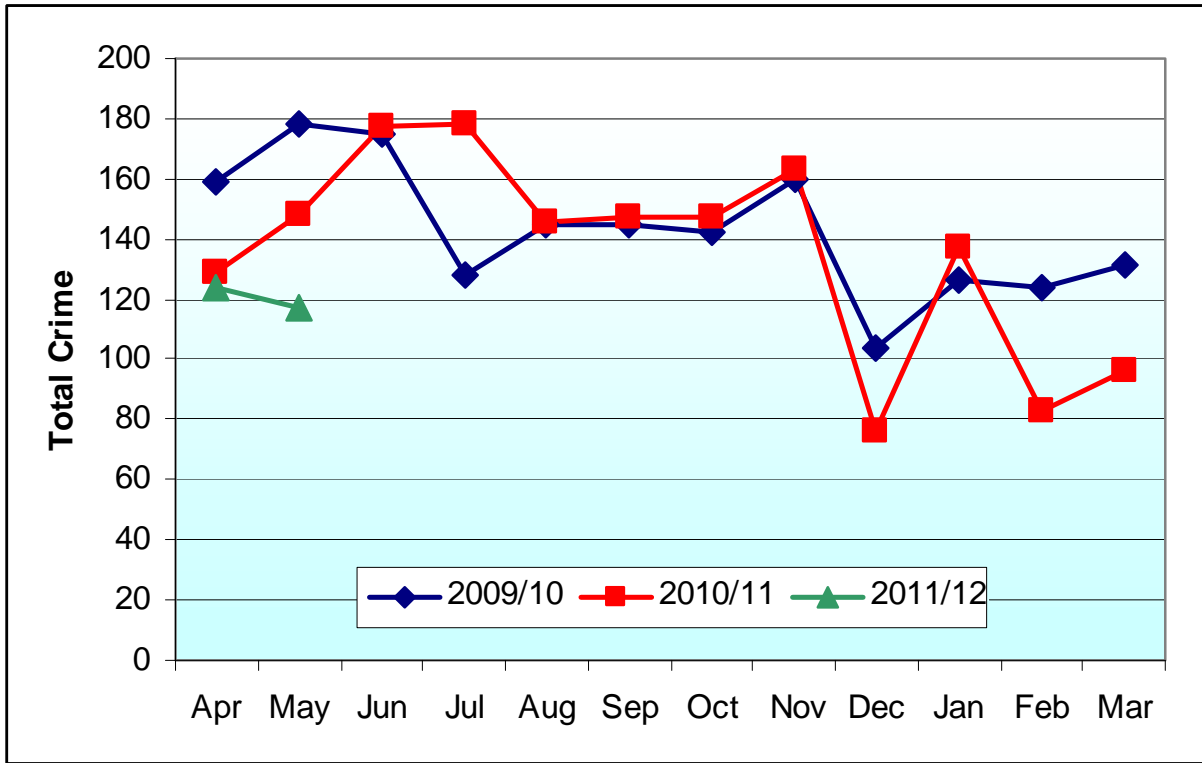
neighbour dispute and a dispute between school friends. Furthermore, 8 incidents reported on Queen Ediths Way were mainly related to groups of youths causing problems on a school site as well as for local residents as well.

### **Environmental Issues**

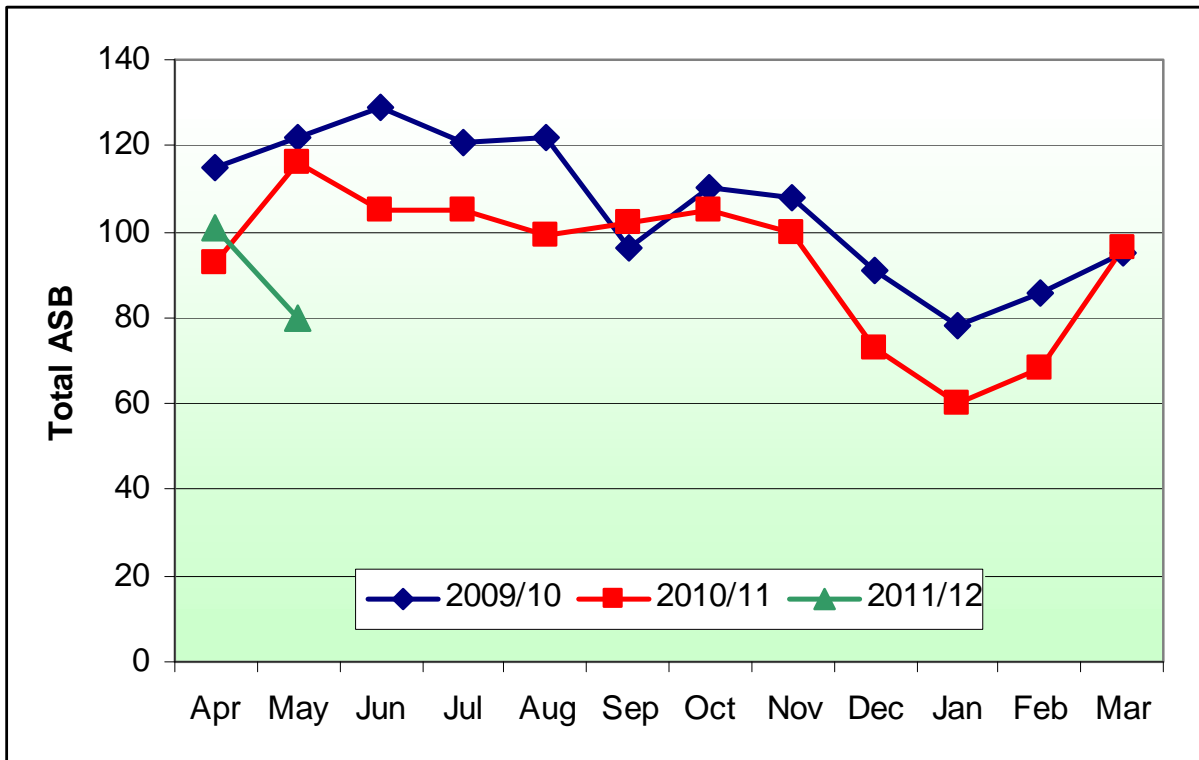
- Between February and May 2011, there were 4 reports of abandoned vehicles in the ward compared with 7 during the same period the previous year. This included 3 vehicles, which were not on site following inspection. There were no specific hotspots during either period.
- Between February and May 2011, there were 17 reports of fly tipping in the ward compared with 11 reports during the same period the previous year. There was insufficient evidence to issue formal warning letters. There was a verbal warning for trade waste. Wulfstan Way (3) was the hotspot during the current reporting period. Limekiln Road (3) was the hotspot during the previous year.
- Between February and May 2011, 59 derelict cycles were dealt with compared with 47 during the same period the previous year. Babraham Road (19), Netherhall Way (7), Hartington Grove (4) and Queen Edith's Way (4) were the main hotspots during the current reporting period. Hills Road (21), Babraham Road (7), Spalding Way (4), Luard Road (3) and Rock Road (3) were the main hotspots during the previous year.

### 4. CURRENT CRIME AND INCIDENT LEVELS

#### Total Crime



#### Total ASB



**5. CURRENT CRIME AND INCIDENT LEVELS IN NEIGHBOURHOOD, BY WARD**

			Dwell. Burg.	Other Burg.	Violent Crime	Robbery	Theft of Vehicle	Theft from Veh.	Cycle Theft	Theft from Shop	Criminal Damage	Other Crime	TOTAL CRIME	TOTAL ASB	
<b>N'Hod</b>	<b>City South</b>	<i>Feb 11 – May 11</i>	17	26	68	3	11	34	77	13	57	114	<b>420</b>	<b>345</b>	
		<i>Oct 10 – Jan 11</i>	45	30	99	10	11	42	107	5	72	102	<b>523</b>	<b>338</b>	
		<i>Feb 10 – May 10</i>	47	33	103	5	2	41	92	28	61	120	<b>532</b>	<b>390</b>	
<b>Wards</b>	<b>Trumpington</b>	<i>Feb 11 – May 11</i>	7	13	18	3	0	9	29	6	22	45	<b>152</b>	<b>100</b>	
		<i>Oct 10 – Jan 11</i>	16	16	40	2	2	21	55	2	28	34	<b>216</b>	<b>113</b>	
		<i>Feb 10 – May 10</i>	12	14	34	2	0	18	48	25	15	49	<b>217</b>	<b>146</b>	
	<b>Cherry Hinton</b>	<i>Feb 11 – May 11</i>	6	4	22	0	8	17	14	14	5	20	22	<b>118</b>	<b>129</b>
		<i>Oct 10 – Jan 11</i>	8	5	30	8	7	2	8	8	3	26	26	<b>123</b>	<b>121</b>
		<i>Feb 10 – May 10</i>	21	6	34	2	0	12	13	13	2	26	23	<b>139</b>	<b>128</b>
	<b>Queen Edith</b>	<i>Feb 11 – May 11</i>	4	9	28	0	3	8	34	34	2	15	47	<b>150</b>	<b>116</b>
		<i>Oct 10 – Jan 11</i>	21	9	29	0	2	19	44	44	0	18	42	<b>184</b>	<b>104</b>
		<i>Feb 10 – May 10</i>	14	13	35	1	2	11	31	31	1	20	48	<b>176</b>	<b>116</b>

## 6. TOP 10<sup>1</sup> ASB INCIDENT TYPES IN THE CITY SOUTH NEIGHBOURHOOD, BY WARD

Please Note: Incident levels for each of the wards may not be consistent with the official figures that will be published by the Force and Home Office. This is because the data system used to draw the level of detail needed for the ASB type breakdown for this report may not contain precise locations due to the way incidents are reported e.g. ASB reported where ward boundaries lie could initially be recorded in the neighbouring ward but subsequently corrected. The figures should only be used as a guide and not regarded as official statistics for publication.

			ABANDONED VEHICLE (NOT SMV/OBSTRUCT)	CONCERN	MALICIOUS/NUIS. COMMUNICATION	NEIGHBOUR DISPUTE	NOISE (ALL TYPES)	ROAD RELATED	ROW & INCONSID BEHAVIOUR.	SUSPICIOUS CIRCUMSTANCES	VEHICLE NUISANCE	VIOLENCE	OTHER INCIDENTS	Grand Total
<b>N'Ho d</b>	<b>City South</b>	<i>Feb 11 – May 11</i>	23	5	27	6	17	8	172	6	34	25	21	<b>344</b>
		<i>Oct 10 – Jan 11</i>	26	1	35	0	13	9	176	6	29	20	27	<b>342</b>
<b>Wards</b>	<b>Trumpington</b>	<i>Feb 11 – May 11</i>	11	3	6	2	4	4	49	3	4	5	6	<b>97</b>
		<i>Oct 10 – Jan 11</i>	6	1	7	0	5	4	60	2	9	8	12	<b>114</b>
	<b>Cherry Hinton</b>	<i>Feb 11 – May 11</i>	10	2	10	3	3	0	70	3	13	8	8	<b>130</b>
		<i>Oct 10 – Jan 11</i>	5	0	15	0	5	1	77	0	4	5	12	<b>124</b>
	<b>Queen Edith</b>	<i>Feb 11 – May 11</i>	2	0	11	1	10	4	53	0	17	12	7	<b>117</b>
		<i>Oct 10 – Jan 11</i>	15	0	13	0	3	4	39	4	16	7	3	<b>104</b>

<sup>1</sup> The table shows top 10 different call types (final call types).

## **7. RECOMMENDATIONS**

The following Neighbourhood Priorities are recommended for consideration:

- That the ASB Patrols in the High Street, Cherry Hinton continue.