

# Neighbourhood Profile Update Cambridge City South Neighbourhood

November 2010



**Inspector Steve Kerridge,  
Cambridge City Sector  
Commander**

**Lynda Kilkelly, Safer  
Communities Section  
Manager, Cambridge City  
Council**



|  |           |
|--|-----------|
| <b>1. INTRODUCTION</b>                                 | <b>2</b>  |
| Aim  | 2         |
| Methodology  | 2         |
| <b>2 PREVIOUS PRIORITIES &amp; ENGAGEMENT ACTIVITY</b> | <b>3</b>  |
| Previous Priorities                                    | 3-6       |
| Engagement Activity                                    | 7         |
| <b>3 AN INTRODUCTION TO ASB IN CAMBRIDGE CITY</b>      | <b>8</b>  |
| <b>4 EMERGING ISSUES</b>                               | <b>9</b>  |
| <b>5 CURRENT CRIME &amp; INCIDENT LEVELS</b>           | <b>14</b> |
| <b>6 RECOMMENDATIONS</b>                               | <b>17</b> |

## 1. Introduction

### Aim

The aim of the Neighbourhood profile update is to provide an overview of action taken since the last reporting period, identify ongoing and emerging crime and disorder issues, and provide recommendations for future priorities and activity in order to facilitate effective policing and partnership working in the area.

The document should be used to inform multi-agency neighbourhood panel meetings and neighbourhood policing teams, so that issues can be identified, effectively prioritised and partnership problem solving activity undertaken.

### Methodology

This document was produced using the following data sources:

- Crime and Incident data from June 10 – September 10 and as a comparison data from February 10 – May 10 and June 09 – September 09.
- Information from the Neighbourhood Policing teams, October 10

## 2. Previous Priorities & Engagement Activity

### Previous Priorities

At the neighbourhood panel meeting on 8<sup>th</sup> July, the following issues were adopted as priorities. The tables below summarise action taken and the current situation regarding the priorities which were set:

| <b>Anti-social Behaviour and Localised Neighbourhood Disorder - Tenby Close and Bliss Way, Cherry Hinton</b> |  |
|--|--|
| <b>Objective</b>   | <p>1. Reduce calls for service concerning anti-social behaviour and intimidating congregations at the location</p> <p>2. Increase trust and confidence in police and partner actions</p>   |
| <b>Action Taken</b>  | <p>During the period there have been 10 calls to police from Tenby Close. Of these, only 2 relate to rowdy / nuisance behaviour and the greater proportion of calls were in the early part of the period.</p> <p>In early September reports of youths congregating once again on consecutive nights in the stairwells was challenged through the attendance at key times of police staff. Whilst no criminal offences were revealed, these groups have been dispersed.</p> <p>A total of 60 hours of patrol time was dedicated to the reasonably small geographic locality during the period to seek to engage with residents and improve their confidence to report and work with police and partners. In addition, the local Special Constabulary have focused on the area as part of their contribution to tackling neighbourhood priorities, developing contacts in the area.</p> <p>Residents have not reported any incidents to the council other than an incident of graffiti. The ASB team continues to monitor the area and are contacting residents regularly.</p> <p>Bliss Way – residents have reported to the City Council’s ASB Team that it has been quieter of late. However, a disturbance was reported to the team at the beginning of October and the council are considering tenancy enforcement action against the perpetrator.</p> |
| <b>Current Situation</b>   | <p>Currently instances of anti-social behaviour remain low in the area. Work by Police, City Homes and others have identified some vulnerable residents who have benefited from additional support.</p>  |

|                                      |                  |
|--------------------------------------|------------------|
| <p><b>Continue or Discharge?</b></p> | <p>Discharge</p> |
|--------------------------------------|------------------|

| <p><b>Tackling Anti-social Behaviour at Cambridge Chalk Pits - Cherry Hinton</b></p> |   |
|--|---|
| <p><b>Objectives</b></p>   | <p>This is a long-term issue that was accepted from the outset as not likely to be fully resolved during the period. Within the longer-term aim the short-term objectives were to seek to offer immediate respite for The Spinney school and local residents from anti-social behaviour associated with civil trespass.</p> <p>Notably:</p> <ol style="list-style-type: none"> <li>1. Prevention of access to the lake area</li> <li>2. To identify any persons found in or attempting to access the lake area</li> <li>3. To identify all land owners to seek prosecution for trespass as a deterrent</li> <li>4. To provide high visibility patrols in the area</li> <li>5. Liaise and advise School on security and preventative measures</li> <li>6. Reduce criminal damage and associated activity at the allotment gardens off Daws Lane</li> </ol> |
| <p><b>Action Taken</b></p>   | <p>This is recognised as a seasonal issue and there have been very few issues of note since August. Land Agent January's agreed to receive information of all persons stopped by Police and other agencies during the period for consideration of prosecution for civil trespass. Police have not passed details for several weeks due to a significant reduction in incidents as anticipated.</p> <p>Only very early in the Summer period were local persons encountered trespassing. There is no obvious explanation why, but most persons stopped had attended the site from the Suffolk area. This is being explored.</p>   |

|                               |  |
|-------------------------------|--|
|                               | Local officers have maintained contact with Spinney School, local residents and Councillors throughout.  |
| <b>Current Situation</b>      | The Spinney School are currently working on a bid to secure funds through a Safer City Grant to fund new fencing to help prevent access from the school and seek to prevent the anti-social behaviour and problems for adjacent residents. |
| <b>Continue or Discharge?</b> | Discharge  |

| <b>Anti-social Behaviour in Paget Road / Foster Road, Trumpington</b> |   |
|---|---|
| <b>Objective</b>  | <ol style="list-style-type: none"> <li>1. Reduce calls for service re. ASB to the area</li> <li>2. To secure prosecutions / alternative methods of disposal to acts of ASB where lawful, necessary and proportionate to do so</li> <li>3. To seek to increase community confidence and trust in the work of Police and partners</li> </ol>  |
| <b>Action Taken</b>   | <p>Patrols have identified a small group of local youths who appear to be connected to reports of anti-social behaviour in the recreation ground and adjacent residential area. Just over 200 hours of specific patrol time has been dedicated to this priority by local staff. This is in addition to patrolling by Police response teams during their duties and time spent engaging with those believed involved and their parents.</p> <p>An application for an ASBO for the suspected ring-leader following significant evidence collection by Police and the City Council was made to local Magistrates, but was unsuccessful.</p> <p>The process of seeking to gather evidence continues and Police will continue to look for opportunities to curb behaviour of the most persistent offenders through criminal or civil powers.</p> <p>There has been a reduction in the number of reports to the City Council's ASB Team and tenancy enforcement action has been taken against two residents known to be causing problems.</p> |
| <b>Current Situation</b>  | <p>Reports of anti-social behaviour continue in the area and during the period a number of calls concerning vehicle-related nuisance and off-road trail bikes were received, believed to be exacerbated by access to the Guided Busway.</p> <p>Nightly patrols continue and it is recommended that this priority remains for the next period.</p>   |
| <b>Continue or Discharge?</b>   | Continue  |

## **Engagement Activity**

Engagement events permitting members of the public to meet the City South and other Cambridge City Neighbourhood Policing Teams are listed on the Constabulary's website.

They include monthly surgeries at Waitrose Trumpington, Addenbrooke's Hospital Concourse and Cherry Hinton Village Centre.

For more private matters, officers will be happy to arrange a meeting at your convenience or discuss matters via telephone.

For further details please visit [www.cambs.police.uk](http://www.cambs.police.uk) and look for the "My Neighbourhood" link or call 0345 456 456 4.

## An Introduction to Anti-Social Behaviour (ASB) in Cambridge City

It has been noted from recent Cambridge City Neighbourhood Panel Meetings that Anti-social behaviour (ASB) issues are at the forefront of public concern. To address these concerns, this document will now mainly focus on ASB issues and will aim to give greater detail of the problems faced in each ward. As a result, included in this document will be a breakdown of ASB types as well as a summary of the issues raised by the public when reporting incidents. A summary of emerging issues within crime will still be provided.

When an incident is reported, it is given a Closure Class which groups the incident under specific categories. The specific closure classes for those incidents defined as ASB are included in table.1

*Table.1 ASB Closure Class Definitions*

| <b>ASB</b>    | <b>Description</b>                                      |
|---------------|---|
| <b>AS02.2</b> | <b>Street Drinking</b>                                  |
| <b>AS03.1</b> | <b>Begging/Vagrancy</b>                                 |
| <b>AS04.1</b> | <b>Prostitution related activity</b>                    |
| <b>AS05.1</b> | <b>Abandoned Vehicle (not stolen/obstruction)</b>       |
| <b>AS05.2</b> | <b>Vehicle Nuisance/Inappropriate Veh use</b>           |
| <b>AS06.0</b> | <b>Noise</b>  |
| <b>AS07.1</b> | <b>Litter/Drugs Paraphernalia</b>                       |
| <b>AS07.2</b> | <b>Inappropriate - Use/Sale/Possession of Fireworks</b> |
| <b>AS07.5</b> | <b>Rowdy/Nuisance - Neighbours</b>                      |
| <b>AS07.6</b> | <b>Rowdy or Inconsiderate Behaviour</b>                 |
| <b>AS08.1</b> | <b>Hoax Call to Emergency Services</b>                  |
| <b>AS09.1</b> | <b>Animal Problems</b>                                  |
| <b>AS10.1</b> | <b>Malicious/Nuisance communication</b>                 |
| <b>AS10.2</b> | <b>Regular caller - HIST INFO</b>                       |
| <b>AS11.1</b> | <b>Trespass</b>   |
| <b>AS12.1</b> | <b>Prejudice Incident</b>                               |

## 4. Emerging Issues

### Neighbourhood trends

Offence levels across City South have increased compared to the previous period and the same period last year with 648 offences in the last four months. Offences were high in June and July and decreased in August and September. Anti-social behaviour (ASB) incidents have also increased compared to the previous period but decreased compared to the same period last year.

### Trumpington

- Total crime in Trumpington has increased compared to the previous period (251 offences vs. 217 offences) but remained stable in comparison to the previous year. The majority of this increase was due to increases in thefts from vehicles, cycle theft and criminal damage.
- Dwelling burglary offences have reduced to just five offences over the period compared to 12 in previous period and 11 in the same period last year.
- Burglary other offences have remained stable at 13 offences. The majority of these offences involved the breaking into of residential sheds/garages and cycles/tools being stolen from within.
- Violent crime offences have remained relatively stable at 39 offences. However, there have been four robberies of personal property. Two of these have targeted people on pedal cycles with the intention of stealing their bike.
- There has been an increase in thefts from vehicles in this period compared to the previous period going from 18 offences to 32 offences. The most common targeted property has been satellite navigation systems.
- Cycle theft offences have increased compared to the previous period (67 offences vs. 48 offences). Common locations for cycle theft offences were Bateman Street, Station Road and Hills Road.
- Criminal Damage has increased compared to the previous period and is at a similar level as the same period in the previous year.
- ASB incidents have increased slightly to 155 incidents compared to the previous period (146), but as with the criminal damage, has decreased compared to the same period in the previous year. The street with the most calls has been Foster Road with the cause being a combination of neighbour disputes and motorbikes/mini motos being ridden in an anti-social manner.

## City Services Data

- Between June and September 2010, there were 4 reports of abandoned vehicles in the ward, compared with 10 during the same period the previous year. Illegally parked notices were applied to 2 vehicles and the remaining vehicles were not on site following inspection. There were no specific hotspots during either period.
- Between June and September 2010, there 28 reports of flytipping within the ward, compared with 28 again during the same period the previous year. Hanover Court (4), Russell Court (4), 5 during the 2009 period, Anstey Way (3), 4 during the 2009 period, George IV Street and Hills Road (each with 3) were specific hotspots during the 2010 period. Additional hotspots during the same period last year were Hauxton Road (6) and Princess Court (4). There was sufficient evidence to issue a warning letter to a trade offender for one of the offences at Hills Road.
- Between June and September 2010, 34 derelict cycles were dealt with, compared with 31 during the same period the previous year. Hauxton Road Park & Ride (8), Kingfisher Way and Shelford Road (both with 4) and Hills Road and Porson Road (both 3) were the hotspots during this period. Long Road (6), Coronation Street (5) and Shelford Road (4) were the hotspots during the same period the previous year.
- Between June and September 2010, there were no needles reported in the ward, compared with one during the same period the previous year.

## Cherry Hinton

- Total crime in Cherry Hinton has increased compared to both the previous period (139 offences) and the same period last year (163 offences). Notable increases have been seen in other burglaries, violent crime, thefts from vehicles, cycle theft and criminal damage.
- Dwelling burglary offences have remained stable compared to the previous period (18 offences vs. 21 offences). However, other burglaries have doubled to 13. Six of these were targeted garages on Rothleigh Road on the same night.
- Violent crime offences have increased from 34 offences in the previous period to 41 offences in this period. Offence levels have remained stable compared to the same period last year when there were 38 offences.
- There were 20 thefts from vehicle offences in this period compared with 12 offences in the previous period and 10 offences in the same

period last year. Five of these offences involved the theft of number plates on different occasions at Toyota and Lexus on Norman Way.

- Criminal damage offences have continued to increase compared to the previous period (38 offences vs. 26 offences). The most common type of damage has been to vehicles, including scratched paintwork and smashed windows.
- ASB incidents have increased from 128 incidents in the previous period to 133 incidents in this period. 13 of the incidents occurred at Tesco. There have also been most calls about rowdy and inconsiderate behaviour on the High Street and Colville Road.

### **City Services Data**

- Between June and September 2010 there were 10 reports of abandoned vehicles in the ward, compared with 17 during the same period the previous year. This included 6 vehicles, which were later claimed by their owners, one, which was not on site following inspection and another vehicle, which was referred to the Council's Housing department. One case is currently pending further investigation.
- Between June and September 2010, there were 20 reports of flytipping within the ward, compared with 26 during the same period the previous year. Tenby Close (4) was a hotspot during the 2010 period. Arran Close (4) and Cherry Hinton Road and Colville Road (both with 3) were hotspots during the same period last year. There was sufficient evidence to issue warning letters to two domestic offenders for the offences at Tenby Close. One case is currently pending further investigation.
- Between June and September 2010, 11 derelict cycles were dealt with, compared with 18 during the same period the previous year. Glenmere Close (3) was a hotspot during the 2010 period, compared with Cherry Hinton Road and Harcombe Road (both with 3) during the same period the previous year.
- Between June and September 2010, 5 needles were reported in the ward compared with 0 during the same period the previous year. This related to a single report in one location in Cherry Hinton Road

### **Queen Ediths**

- Total crime has increased in Queen Edith compared to the previous period and the same period in the previous year. Increases have been seen in violent crime, vehicle crime and criminal damage.

- Violent crime has continued to increase with 44 offences compared to both the previous period and the same period in the previous year. Thirteen of these offences occurred at Addenbrookes hospital, seven of which relate to one incident when a male lashed out during psychotic episode.
- Theft from vehicle offences have almost doubled to 21 offences compared to both the previous period and the same period in the previous year. Four of the offences have been the theft of Mercedes badges, particularly in Kinnaird Way. Five of the offences occurred in Rathmore Close where a range of property has been stolen.
- Criminal Damage has increased compared to the previous period but has remained at a similar level as the previous year with 30 offences. There have been multiple offences of damage to vehicles on Hills Road, Gunhild Way, Queen Ediths Way and Hulatt Road.
- ASB incidents in Queen Edith have remained at a similar level compared to the previous period (123 incidents vs. 116 incidents) but a reduction on the previous year. There were 15 incidents at Addenbrookes Hospital, some of which refer to people being aggressive in A&E. Other common locations include Greenlands and Mowbray Road, with complaints about noise, and Gunhild Way, with incidents rowdy and nuisance behaviour.

### **City Services Data**

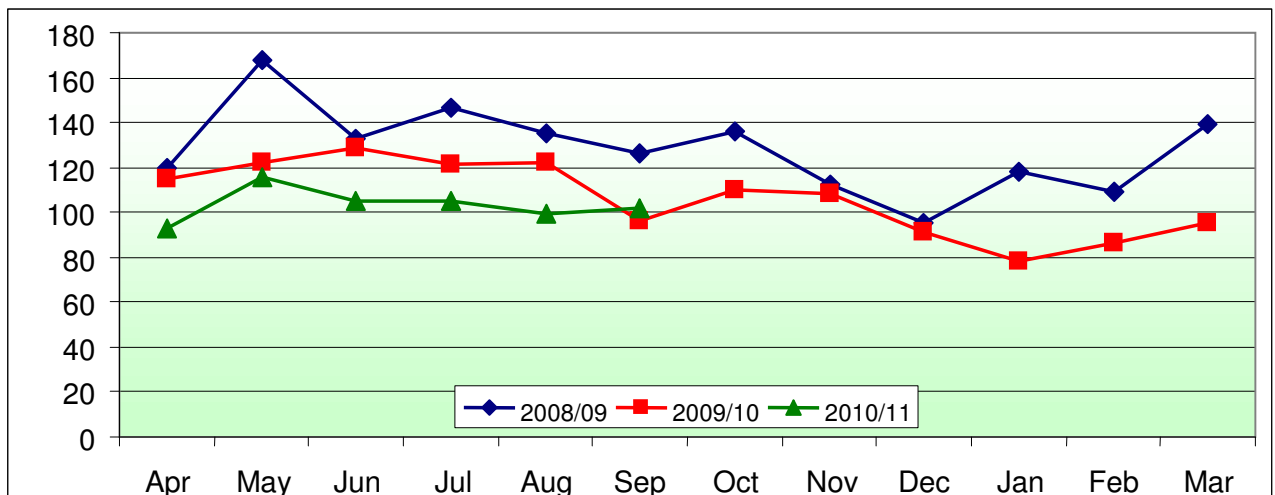
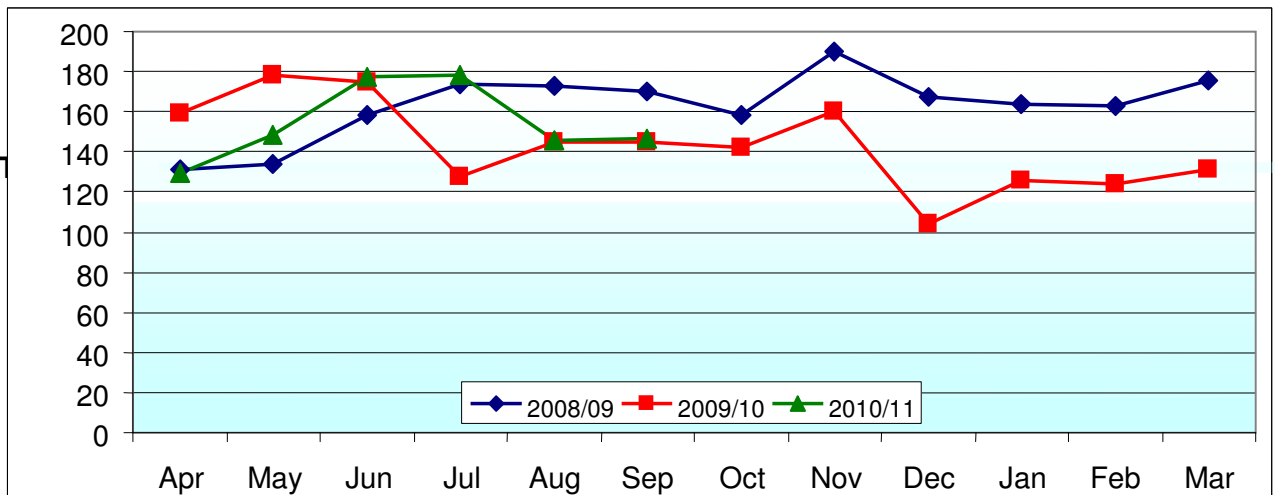
- Between June and September 2010, there were 8 reports of abandoned vehicles in the ward, compared with 5 during the same period last year. There were no specific hotspots during either period. Three vehicles were not on site following inspection and another, which has been removed and taken to a compound pending further action. In addition, a CLE26 notice was issued to an offender on behalf of the DVLA for not displaying road tax on a public highway and will result in a fine issued by the DVLA.
- Between June and September 2010, there were 16 reports of flytipping within the ward, compared with 9 during the same period the previous year. Wulfstan Way was a hotspot during the 2010 period with 7, compared with 3 during the same period last year. There were no further hotspots during either period. There was sufficient evidence to issue warning letters to 2 domestic offenders, one of which resulted from the offences at Wulfstan Way. One case is currently pending further investigation.
- Between June and September 2010, 11 derelict cycles were removed, compared with 29 during the same period last year. Babraham Road

Park & Ride (3, compared with 7 during the same period last year) was a hotspot as well as Wulfstan Way (also with 3) during the 2010 period. Other hotspots during the 2009 period were Hartington Grove and Hills Avenue (both with 6).

- Between June and September 2010, 2 needles were reported, compared with 0 during the same period the previous year and related to a single report in one location.

### 5. Current Crime and Incident Levels

#### Total Crime



**Current Crime and Incident Levels in Neighbourhood, by Ward**

|               |                      |                        | Dwell. Burg. | Other Burg. | Violent Crime | Robbery | Theft of Vehicle | Theft from Veh. | Cycle Theft | Theft from Shop | Criminal Damage | Other Crime | TOTAL CRIME | TOTAL ASB  |
|---------------|----------------------|------------------------|--------------|-------------|---------------|---------|------------------|-----------------|-------------|-----------------|-----------------|-------------|-------------|------------|
| <b>N'Hood</b> | <b>City South</b>    | <i>Jun 10 – Sep 10</i> | 41           | 37          | 124           | 4       | 13               | 73              | 130         | 15              | 94              | 117         | <b>648</b>  | <b>411</b> |
|               |                      | <i>Feb 10 – May 10</i> | 47           | 33          | 103           | 5       | 2                | 41              | 92          | 28              | 61              | 120         | <b>532</b>  | <b>390</b> |
|               |                      | <i>Jun 09 – Sep 09</i> | 38           | 40          | 95            | 7       | 8                | 50              | 124         | 9               | 97              | 125         | <b>593</b>  | <b>468</b> |
| <b>Wards</b>  | <b>Trumpington</b>   | <i>Jun 10 – Sep 10</i> | 5            | 13          | 39            | 4       | 4                | 32              | 67          | 13              | 26              | 48          | <b>251</b>  | <b>155</b> |
|               |                      | <i>Feb 10 – May 10</i> | 12           | 14          | 34            | 2       | 0                | 18              | 48          | 25              | 15              | 49          | <b>217</b>  | <b>146</b> |
|               |                      | <i>Jun 09 – Sep 09</i> | 11           | 17          | 40            | 0       | 5                | 29              | 55          | 6               | 29              | 56          | <b>248</b>  | <b>169</b> |
|               | <b>Cherry Hinton</b> | <i>Jun 10 – Sep 10</i> | 18           | 13          | 41            | 0       | 3                | 20              | 31          | 2               | 38              | 31          | <b>197</b>  | <b>133</b> |
|               |                      | <i>Feb 10 – May 10</i> | 21           | 6           | 34            | 2       | 0                | 12              | 13          | 2               | 26              | 23          | <b>139</b>  | <b>128</b> |
|               |                      | <i>Jun 09 – Sep 09</i> | 12           | 7           | 38            | 4       | 2                | 10              | 17          | 3               | 37              | 33          | <b>163</b>  | <b>145</b> |
|               | <b>Queen Edith</b>   | <i>Jun 10 – Sep 10</i> | 18           | 11          | 44            | 0       | 6                | 21              | 32          | 0               | 30              | 38          | <b>200</b>  | <b>123</b> |
|               |                      | <i>Feb 10 – May 10</i> | 14           | 13          | 35            | 1       | 2                | 11              | 31          | 1               | 20              | 48          | <b>176</b>  | <b>116</b> |
|               |                      | <i>Jun 09 – Sep 09</i> | 15           | 16          | 17            | 3       | 1                | 11              | 52          | 0               | 31              | 36          | <b>182</b>  | <b>154</b> |

### ASB Incident Types in the City South Area Neighbourhood, by Ward

#### Please Note

Incident levels for each of the wards may not be consistent with the official figures that will be published by the Force and Home Office. This is because the data system used to draw the level of detail needed for the ASB type breakdown for this report may not contain precise locations due to the way incidents are reported e.g. ASB reported where ward boundaries lie could initially be recorded in the neighbouring ward but subsequently corrected.

The figures should only be used as a guide and not regarded as official statistics for publication.

|               |                      |                        | ABAN. VEH. (NOT SMV/OBSTRUCT) | ANIMAL PROBLEMS | BEGGING/VAGRANCY | HOAX CALL TO EMERGENCY SERVICE | MALICIOUS/NUIS. COMMUNICATION | NOISE | PREJUDICE INCIDENT | PROSTITUTION | ROWDY& INCONSIDERATE BEHAVIOUR. | ROW/NUIS. - NEIGHBOURS | ROW/NUIS - USE/SALE F/WORKS | VEH. RELATED NUIS/INAPP. VEH. USE | Grand Total |
|---------------|----------------------|------------------------|-------------------------------|-----------------|------------------|--------------------------------|-------------------------------|-------|--------------------|--------------|---------------------------------|------------------------|-----------------------------|-----------------------------------|-------------|
| <b>N'Hood</b> | <b>City South</b>    | <i>Jun 10 - Sep 10</i> | 32                            | 3               | 4                | 3                              | 31                            | 29    | 1                  | 1            | 211                             | 45                     | 1                           | 44                                | 405         |
| <b>Wards</b>  | <b>Trumpington</b>   | <i>Jun 10 - Sep 10</i> | 15                            | 1               | 2                | 1                              | 11                            | 6     | 0                  | 1            | 79                              | 16                     | 0                           | 18                                | 150         |
|               | <b>Cherry Hinton</b> | <i>Jun 10 - Sep 10</i> | 6                             | 2               | 0                | 2                              | 12                            | 5     | 0                  | 0            | 82                              | 13                     | 1                           | 9                                 | 132         |
|               | <b>Queen Edith</b>   | <i>Jun 10 - Sep 10</i> | 11                            | 0               | 2                | 0                              | 8                             | 18    | 1                  | 0            | 50                              | 16                     | 0                           | 17                                | 123         |

## **6. Recommendations**

The following Neighbourhood Priorities are recommended for consideration:

- Tackling youth-related anti-social behaviour in Cherry Hinton High Street in the vicinity of Rectory Terrace
- Continuation of work to reduce youth related anti-social behaviour in Paget Road / Foster Road, Trumpington