

2001 Census Profile of Cambridge District

Employed Resident Population & Workplace Population

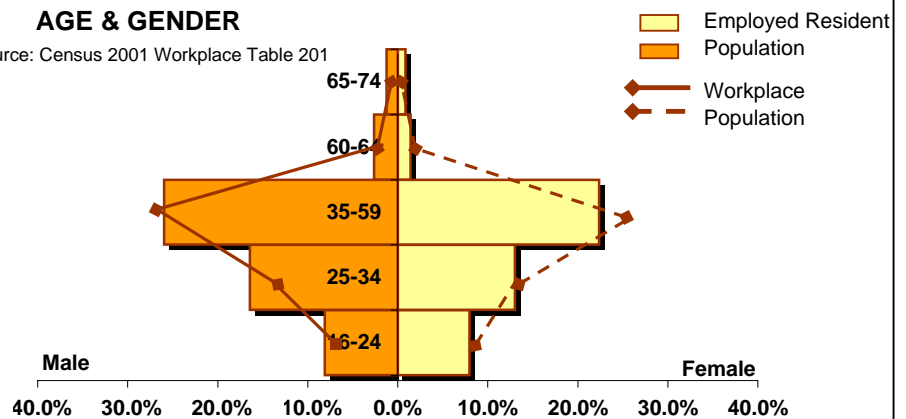
SUMMARY STATISTICS

Employed Resident Population	49,261
Workplace Population	78,697
Number Living & Working in Cambridge	35,377
Net In Commuting	29,436

Source: Census 2001 Standard Tables 121 & 129
Census 2001 Workplace Table 206

AGE & GENDER

Source: Census 2001 Workplace Table 201



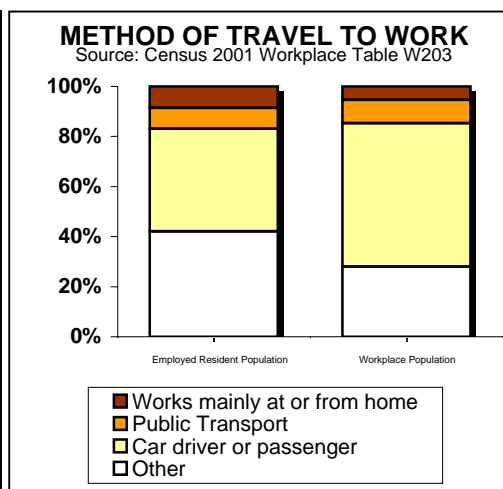
Age	Employed Resident Population					Workplace Population				
	Total	Male		Female		Total	Male		Female	
		Number	% of Total	Number	% of Total		Number	% of Total	Number	% of Total
16-24	7,977	4,025	8.1%	3,952	8.0%	12,030	5,578	7.0%	6,452	8.1%
25-34	14,613	8,156	16.4%	6,457	13.0%	21,323	10,749	13.5%	10,574	13.3%
35-59	23,984	12,889	26.0%	11,095	22.4%	41,607	20,877	26.3%	20,730	26.1%
60-64	2,022	1,310	2.6%	712	1.4%	3,168	1,967	2.5%	1,201	1.5%
65-74	1,038	616	1.2%	422	0.9%	1,318	773	1.0%	545	0.7%
Total	49,634	26,996	54.4%	22,638	45.6%	79,446	39,944	50.3%	39,502	49.7%

EMPLOYMENT STATUS Source: Census 2001 Workplace Table 206

Employment Status	Employed Resident Population Total	Employees (EE)					Self-Employed (SE)				
		Total	Male		Female		Total	Male		Female	
			Number	% of Total EE	Number	% of Total EE		Number	% of Total SE	Number	% of Total SE
Full time student	3,196	3,022	1,396	3.2%	1,626	3.7%	174	118	2.1%	56	1.0%
Not full-time student: employed full time	36,717	32,880	20,121	45.9%	12,759	29.1%	3,837	2,995	52.4%	842	14.7%
Not full-time student: employed part-time	9,625	7,918	1,533	3.5%	6,385	14.6%	1,707	673	11.8%	1,034	18.1%
Total	49,538	43,820	23,050	52.6%	20,770	47.4%	5,718	3,786	66.2%	1,932	33.8%

Employment Status	Workplace Population Total	Employees (EE)					Self-Employed (SE)				
		Total	Male		Female		Total	Male		Female	
			Number	% of Total EE	Number	% of Total EE		Number	% of Total SE	Number	% of Total SE
Full time student	4,017	3,846	1,659	2.3%	2,187	3.0%	171	118	1.7%	53	0.8%
Not full-time student: employed full time	59,235	54,498	31,136	43.2%	23,362	32.4%	4,737	3,688	53.6%	1,049	15.3%
Not full-time student: employed part-time	15,733	13,764	2,091	2.9%	11,673	16.2%	1,969	742	10.8%	1,227	17.8%
Total	78,985	72,108	34,886	48.4%	37,222	51.6%	6,877	4,548	66.1%	2,329	33.9%

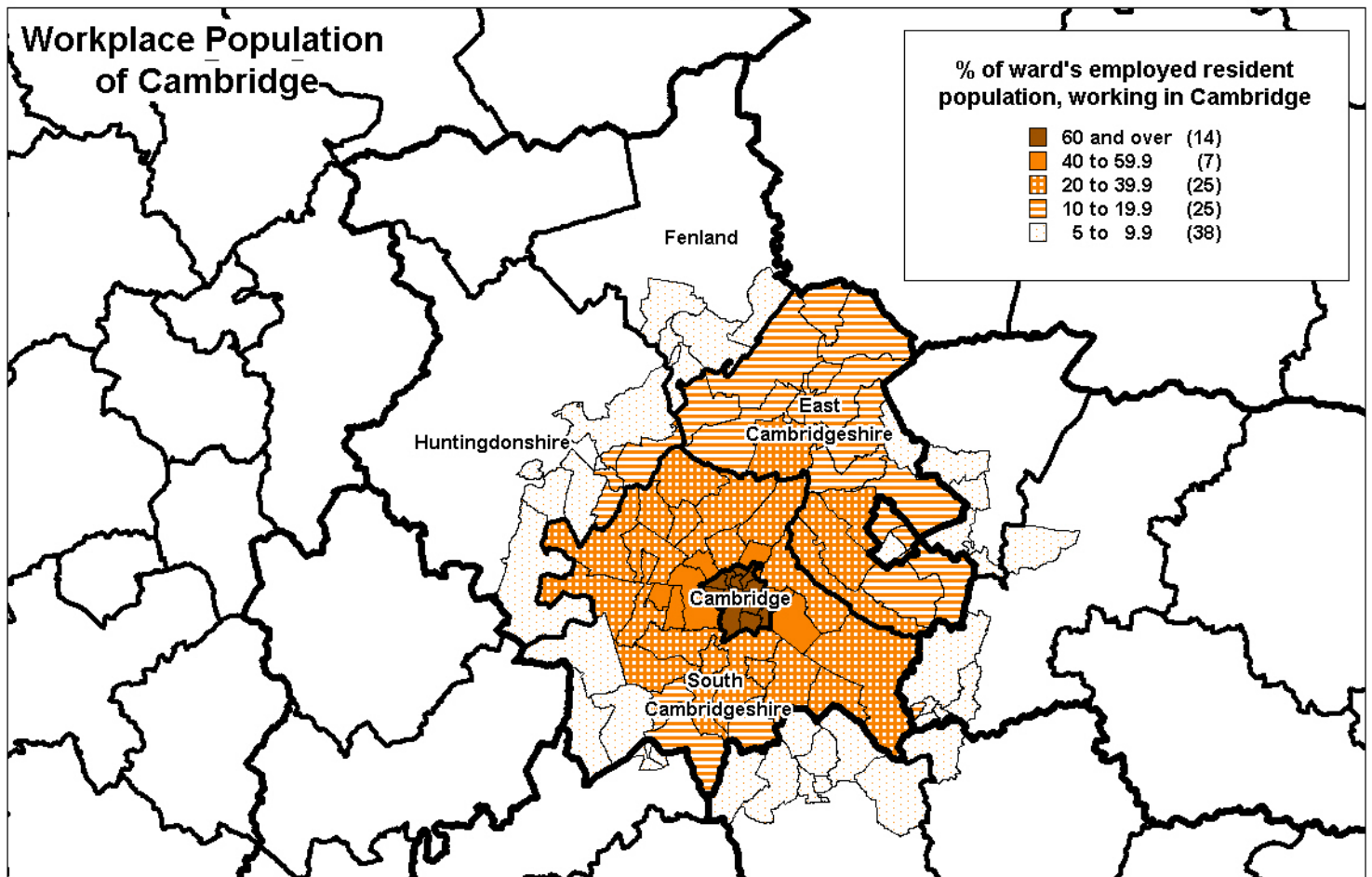
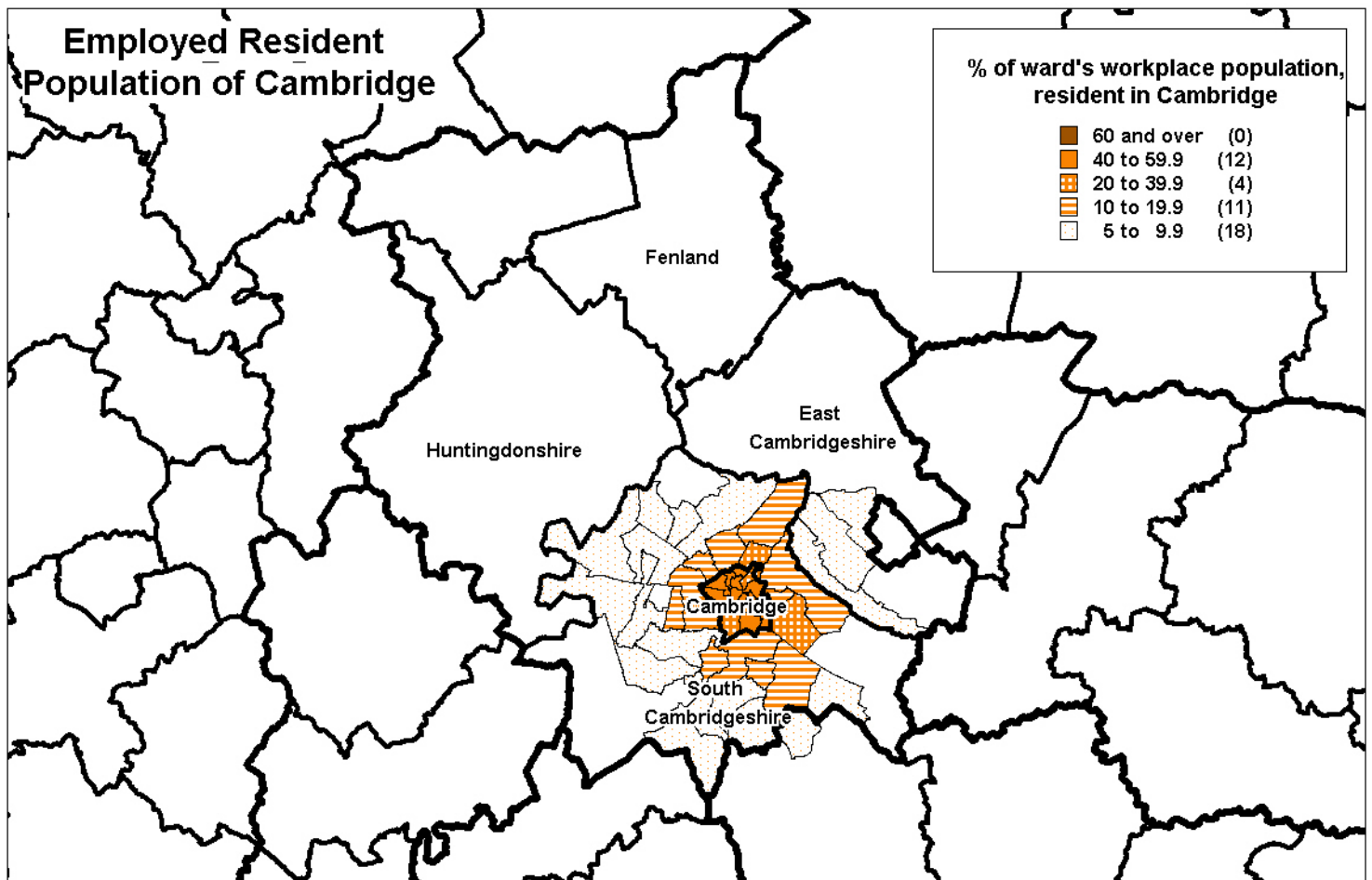
		Employed Resident Population		Workplace Population	
Method of Travel		Number	% of Total	Number	% of Total
Home	Works mainly at or from home	4,218	8.6%	4,218	5.4%
Public Transport	Underground etc.	99	0.2%	51	0.1%
	Train	1,472	3.0%	1,775	2.3%
	Bus etc.	2,539	5.2%	5,500	7.0%
Car	Car driver or passenger	20,219	41.0%	45,229	57.4%
Other	Bicycle	12,852	26.1%	13,571	17.2%
	On foot	6,907	14.0%	6,997	8.9%
	Other	959	1.9%	1,480	1.9%
Total		49,265	100%	78,821	100%



COMMUTING FLOWS TO & FROM CAMBRIDGE

Source: Census 2001 Workplace Table W206

Area of Workplace or Residence		Resident in Cambridge		Workplace in Cambridge	
		Number working in area	% of Employed Resident Population	Number living in area	% of Workplace Population
Cambridgeshire & Peterborough UA	Cambridge City	35,377	71.4%	35,377	44.8%
	Bar Hill	316	0.6%	1,127	1.4%
	Cottenham	239	0.5%	1,375	1.7%
	Fulbourn	675	1.4%	1,099	1.4%
	Girton	168	0.3%	756	1.0%
	Hardwick	15	0.0%	611	0.8%
	Histon and Impington	543	1.1%	1,643	2.1%
	Milton	1,915	3.9%	989	1.3%
	Sawston	370	0.7%	1,016	1.3%
	Teversham	94	0.2%	902	1.1%
	The Sheldrifs & Stapleford	348	0.7%	1,315	1.7%
	The Wilbrahams	462	0.9%	524	0.7%
	Waterbeach	391	0.8%	900	1.1%
	Willingham and Over	63	0.1%	945	1.2%
	Remaining South Cams	2,345	4.7%	7,523	9.5%
	South Cams Total	7,944	16.0%	20,725	26.2%
	Bottisham Ward	113	0.2%	627	0.8%
	Burwell Ward	67	0.1%	699	0.9%
	Ely	156	0.3%	1,319	1.7%
	Remaining East Cams	237	0.5%	3,618	4.6%
	East Cams Total	573	1.2%	6,263	7.9%
	St Ives	110	0.2%	925	1.2%
	Huntingdon	239	0.5%	474	0.6%
St Neots	76	0.2%	539	0.7%	
Remaining Huntingdonshire	446	0.9%	2,373	3.0%	
Huntingdonshire Total	871	1.8%	4,311	5.5%	
Fenland	81	0.2%	904	1.1%	
Cambridgeshire Total	44,846	90.5%	67,580	85.6%	
Peterborough UA	213	0.4%	588	0.7%	
Essex, Southend UA & Thurrock UA	Saffron Walden	123	0.2%	488	0.6%
	Remaining Uttlesford	192	0.4%	570	0.7%
	Uttlesford Total	315	0.6%	1,058	1.3%
	Remaining Essex	204	0.4%	618	0.8%
Essex, Southend UA & Thurrock UA Total	519	1.0%	1,676	2.1%	
Herts	Royston	169	0.3%	605	0.8%
	Remaining North Herts	66	0.1%	327	0.4%
	North Herts Total	235	0.5%	932	1.2%
	Remaining Hertfordshire	137	0.3%	509	0.6%
Hertfordshire Total	372	0.8%	1,441	1.8%	
Suffolk	Newmarket	160	0.3%	954	1.2%
	Remaining Forest Heath	98	0.2%	553	0.7%
	Forest Heath Total	258	0.5%	1,507	1.9%
	Haverhill	86	0.2%	1,120	1.4%
	Remaining St Edmundsbury	136	0.3%	1,003	1.3%
	St Edmundsbury Total	222	0.4%	2,123	2.7%
Remaining Suffolk	54	0.1%	484	0.6%	
Suffolk Total	534	1.1%	4,114	5.2%	
East	Beds & Luton UA	215	0.4%	568	0.7%
	Norfolk	118	0.2%	886	1.1%
	East Total	46,817	94.5%	76,853	97.3%
Other Regions	Inner London	1422	2.9%	406	0.5%
	Outer London	255	0.5%	287	0.4%
	East Midlands	180	0.4%	517	0.7%
	Other Regions	864	1.7%	922	1.2%
Employed Resident Population/ Workplace Population		49,538	100%	78,985	100%



This map is reproduced from Ordnance Survey material with the permission of Ordnance Survey on behalf of the Controller of Her Majesty's Stationery Office.
 (C) Crown copyright. Unauthorised reproduction infringes Crown copyright and may lead to prosecution or civil proceedings. Cambridgeshire County Council. 100023205, 2005



Occupation	Employed Resident Population		Workplace Population		Living & Working in Cambridge		Living in Cambridge - Working elsewhere		Working in Cambridge - Living elsewhere	
	Number	% of Total	Number	% of Total	Number	% of Total	Number	% of Total	Number	% of Total
Managers and Senior Officials	6,381	13.0%	11,229	14.3%	4,022	11.4%	2,359	17.1%	7,207	16.7%
Professional occupations	13,716	27.9%	17,406	22.2%	9,273	26.2%	4,443	32.2%	8,133	18.9%
Associate professional and technical occupations	6,987	14.2%	12,482	15.9%	5,029	14.2%	1,958	14.2%	7,453	17.3%
Administrative and Secretarial occupations	5,095	10.4%	11,634	14.8%	4,063	11.5%	1,032	7.5%	7,571	17.6%
Skilled trades occupations	3,672	7.5%	5,326	6.8%	2,584	7.3%	1,088	7.9%	2,742	6.4%
Personal service occupations	2,838	5.8%	4,824	6.1%	2,337	6.6%	501	3.6%	2,487	5.8%
Sales and customer service occupations	2,952	6.0%	5,244	6.7%	2,409	6.8%	543	3.9%	2,835	6.6%
Process, plant and machine operatives	2,052	4.2%	2,831	3.6%	1,249	3.5%	803	5.8%	1,582	3.7%
Elementary occupations	5,466	11.1%	7,484	9.5%	4,389	12.4%	1,077	7.8%	3,095	7.2%
Total	49,159	100%	78,460	100%	35,355	100%	13,804	100%	43,105	100%

Wards: All wards in Cambridge City District

Settlement Definitions: The definitions of the settlements found in the 'COMMUTING FLOWS TO & FROM' table on Page 2 can be found at http://eastofenglandobservatory.org.uk/census_profile_commuting_profile

Maps: All flows over 5% are shown on the maps but those flows under 5% are not shown.

The Employed Resident Population: All people aged 16-74 in employment who are usually resident in the area. 'Employed' includes any person who did paid work in the week before the Census, whether as an employee or self-employed. It does not include all students, only those that worked full time or part time in the week before the Census.

The Workplace Population: All people aged 16-74 who are in employment and whose usual place of work is in the area. People with no fixed place of work are treated the same as people who work mainly at or from home and are counted as working in their area of residence.

Method of Travel to Work, 'Other' Category: This includes those people travelling by taxi, motorcycle and other modes of transport.

Confidentiality: In order to protect the confidentiality of respondents, small random changes were made to the information collected. Some information was 'swapped' between areas or respondents, and very small numbers were rounded to the nearest 3. This means employed residents and workers totals may differ slightly between different tables.

Further results and information on the 2001 Census are available from www.statistics.gov.uk/census2001

For more information on the Census in the East of England visit the East of England Observatory Website at: www.eastofenglandobservatory.org.uk
To contact the Research Group at Cambridgeshire County Council: Telephone 01223 717208, Email research.group@cambridgeshire.gov.uk or visit the Research Group website on www.cambridgeshire.gov.uk/business/research

**Source: 2001 Census Key Statistics for Local Authorities; Standard Tables for Local Authorities © Crown Copyright
Published by The Research Group, Cambridgeshire County Council.**