

Climate Change Risk Assessment & Management Plan



December 2009

Contents

Executive Summary	i
1 Purpose	1
2 Objectives.....	1
3 Scope	1
4 Cambridge Climate Change Risk Assessment.....	2
4.1 Impacts of past climate & weather events.....	3
4.2 Climate Change Projections.....	14
5 Consequences of climate change risks for Cambridge.....	20
6 Consequences of climate change risks for Cambridge City Council.....	28
7 Risk Management Action.....	34
8 Implementation, monitoring & review.....	38
9 Contacts & further information.....	39
Appendix A Cambs & Peterborough Community Risk Register – Risk Scoring Guidance	40
Appendix B Cambridge climate change risks & opportunities	42
Appendix C Cambridge City Council Corporate Risk Register – Risk Scoring Guidance	51
Appendix D Cambridge City Council climate change risks & opportunities	52
Appendix E Options assessment for climate change risks	60

Tables

Table 1: Cambridgeshire climate impacts profile 2000-06.....	3
Table 2: Definition & occurrence of severe weather events in Cambridge 2000-06	6
Table 3: Summary of weather events, their impacts & those affected in Cambridge	7
Table 4: Rainfall intensity levels & flood design standards	11
Table 5: Very high priority 2020's climate change threats to Cambridge.....	23
Table 6: Medium priority 2020's climate change opportunities to Cambridge	26
Table 7: High & very high priority 2020's climate change threats to Cambridge City Council	30
Table 8: 2020's climate change opportunities to Cambridge City Council	33
Table 9: Priority climate change risk management actions	35

Figures

Figure 1: Cambridge weather events 2000-06	5
Figure 2: Impacts from severe rainfall events in Cambridge 2000-06	10
Figure 3: Daily Rainfall Analysis of Flood & Non-flood Months.....	11
Figure 4: Impacts from heatwave events in Cambridge 2000-06	12
Figure 5: Impacts from other weather events in Cambridge 2000-06	13
Figure 6: Projected change in annual precipitation in Cambridge & Anglian River Basin 2010-2099	15
Figure 7: Projected average seasonal temperatures in Cambridge 2010-2099	16
Figure 8: Projected change in seasonal precipitation in Cambridge 2010-2099	17
Figure 9: Projected change in temperature on the warmest day in Cambridge 2010-2099	18
Figure 10: Projected change in precipitation on the wettest day in Cambridge 2010-2099	19
Figure 11: Cambridge 2020's climate change risk matrix - threats	22
Figure 12: Cambridge 2020's climate change risk matrix - opportunities	25
Figure 13: Cambridge City Council 2020's climate change risk matrix - threats	29
Figure 14: Cambridge City Council 2020's climate change risk matrix - opportunities.....	32
Figure 15: Framework for identifying adaptation options.....	34

Boxes

Box 1: Relationship between severe rainfall and flood events	11
---	----

7 Risk Management Action

Figure 15 illustrates a framework developed by the UK Climate Impacts Programme for identifying options to manage climate change risks. This framework has been used to generate options for managing the risks identified in section 1 and Appendix E lists the 183 options generated including their assessment against the following criteria.

No regrets - measures that are worthwhile (i.e. they deliver net socio-economic benefits) whatever the extent of future climate change.

Low regrets - measures for which the associated costs are relatively low and for which the benefits, although primarily realised under projected future climate change, may be relatively large.

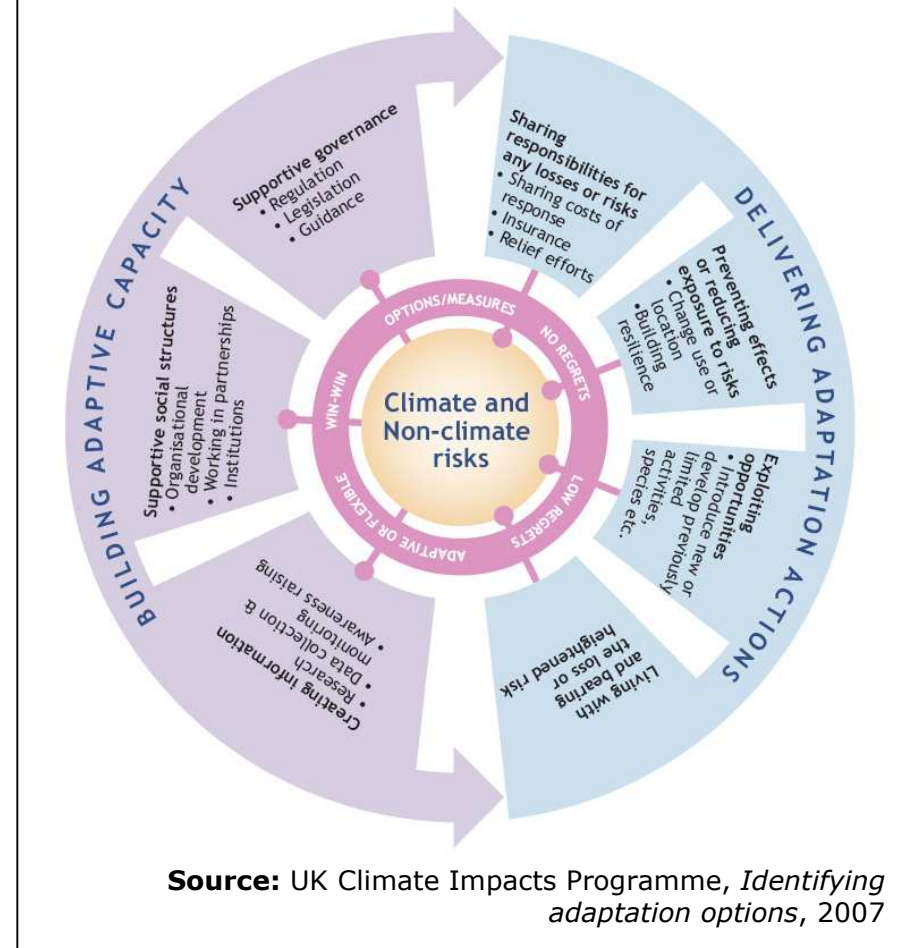
Win win - measures that have the desired result in terms of minimising the climate risks or exploiting potential opportunities but also have other social, environmental or economic benefits.

Flexible / adaptive - involve putting in place incremental adaptation options, rather than undertaking large-scale adaptation in one fell swoop.

Additional – are the measures additional to existing activity?

Council responsibility – is implementation of the

Figure 15: Framework for identifying adaptation options



measure within the City Council's responsibility or ability?

Proportionate – do the benefits of the measure justify any associated disbenefits?

Cost effective – do the benefits of the measure justify its cost?

Achievable – is the measure realistically achievable?

Long lead-in – is there a substantial delay between implementation of the measure and its desired effect?

No policy conflict – does implementation of the measure conflict with any other Council or external policy?

Resilience – is the success of the measure reliant upon any external factor e.g. funding, policy, infrastructure?

Table 9 provides the priority climate change risk management actions for Cambridge City Council based on the options assessment included in Appendix E.

Table 9: Priority climate change risk management actions

Action	How	Who	When
1. Manage corporate risks associated with floods, heat waves and drought orders through the Corporate Risk Register .	Corporate Risk Register	Risk Management	2009-10 & ongoing
2. Provide guidance and support to Council services on the nature of climate change risks to their service and the options for their control.	Risk Management advice	Policy & Projects	2010-11

Action	How	Who	When
<p>3. Assess climate change risks during the development of Council plans, projects, budget bids and savings, including:</p> <p>3.1 Local Development Framework</p> <p>3.2 Nature Conservation Strategy & Local Natural Green Space Management Plans</p> <p>3.3 Air Quality Strategy</p> <p>3.4 Parks & Open Spaces Strategy</p> <p>3.5 Arboriculture Strategy</p> <p>3.6 Office Accommodation Strategy</p> <p>3.7 Council projects</p> <p>3.8 Budget bids & savings</p>	<p>Sustainability appraisal</p> <p>Risk assessment</p> <p>Risk assessment</p> <p>Risk assessment</p> <p>Risk assessment</p> <p>Risk assessment</p> <p>Project Management Guidance</p> <p>Climate Change Rating</p>	<p>Policy & Projects</p> <p>Policy & Projects</p> <p>Environmental Services</p> <p>Active Communities</p> <p>Policy & Projects</p> <p>Property & Building Services</p> <p>Strategy & Partnerships</p> <p>Policy & Projects</p>	<p>Determined by LDF timetable</p> <p>Next revision</p> <p>Next revision</p> <p>Next revision</p> <p>2009-10</p> <p>2010-11</p> <p>2009-10</p> <p>Yearly</p>
<p>4. Fund measures which manage the climate change risks (flooding, heat waves, drought orders) to Council people, property, assets and functions.</p>	<p>Climate Change Fund</p>	<p>Policy & Projects</p>	<p>2009-11</p>

Action	How	Who	When
<p>5. Provide weather data to enable the monitoring of relationships between weather and existing Council data collection regarding the costs, demand and delivery of services, including:</p> <p>5.1 staff attendance</p> <p>5.2 electricity and gas consumption</p> <p>5.3 internal temperatures (including critical assets e.g. server rooms)</p> <p>5.4 Environmental Health enquiries (e.g. odours, food hygiene)</p> <p>5.5 cleaning and maintenance costs for trees, parks and open spaces</p> <p>5.6 air quality</p> <p>5.7 Council drainage culverts</p> <p>5.8 H&S incidents (e.g. heat stress)</p>	Climate Change Champions	Policy & Projects	2010-11
<p>6. Address the strategic climate change risks to Cambridge in partnership with other public bodies, private and community sectors, including:</p> <p>6.1 Cambridge City & South Cambridgeshire Improving Health Partnership</p> <p>6.2 Cambs & Peterborough Local Resilience Forum</p> <p>6.3 Love Cambridge Partnership</p>		<p>Environmental Services</p> <p>Emergency Planning</p> <p>City Centre Management</p>	<p>2010-11</p> <p>2009-10</p> <p>2010-11</p>

Action	How	Who	When
6.4 Cambridge Community Safety Partnership		Strategy & Partnerships	2010-11
6.5 Cambs Environmental Sustainability Partnership (incl. Floods, Biodiversity and Climate Change Groups)		Policy & Projects	2009-10

8 Implementation, monitoring & review

In order to ensure the management of climate change risks is integrated with management of other risks to the Council's people, property, assets and functions the corporate risk register will be used to manage the aforementioned risks and their associated control measures.

The Council's corporate climate change risk assessment will be reviewed in light of the following circumstances.

1. significant new evidence regarding the likelihood or severity of climate change risks in Cambridge.
2. revision to the target level of performance for national indicator 188 (Planning to adapt to climate change) by Cambridge City Council.
3. recommendations resulting from an audit of the Council's management of climate change risks.

9 Contacts & further information

Please contact the City Council's Sustainable City Team for further information about management of climate change risks or the Council's programme of climate change and sustainability activities.

Internet: www.cambridge.gov.uk/sustainablecity

Email: sustainablecity@cambridge.gov.uk

Phone: (01223) 457046

-oOo-