

# Cambridge City Community Safety Partnership



## Performance Report

Q1 – 2010-11

<b>AUTHOR:</b>	Cambridgeshire County Council
<b>CONTACT NO:</b>	01223 728556
<b>DATE:</b>	July 2010
<b>PRODUCED FOR:</b>	Cambridge City Community Safety Partnership

# Cambridge City Community Safety Partnership Performance Summary

## Priorities<sup>1</sup>

## Progress

### 1. Alcohol Related Violent Crime

- To reduce 'Assault with Less Serious Injury' by March 2010 from the baseline of 2008-09 (885 recorded crimes).
- To reduce the number of attendees coded as 'Assault' using Addenbrooke's Emergency Department by March 2010 from the baseline established in 2008-09.
- To reduce the number of Ambulance call outs for 'Assault' by March 2010 from the baseline established in 2008-09.



No Data

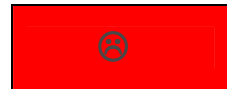
### 2. Anti-Social Behaviour

- To reduce 'Criminal Damage' by March 2010 from the baseline of 2008-09 (2,103 recorded crimes).



### 3. Serious Acquisitive Crime

- To reduce the number of 'Serious Acquisitive Crimes' reported to the police (by concentrating on tackling dwelling burglary) by 3.5% by March 2011 from the baseline of 2007-08 (2,245 recorded crimes). Ongoing 3-year target.<sup>2</sup>



#### Burglary of Homes

- To reduce 'Dwelling Burglary' by 10% by March 2011 from the baseline of 2007-08 (757 recorded crimes). Ongoing 3-year target.



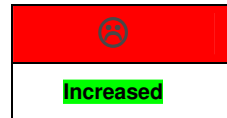
#### Personal Robbery

- To reduce 'Personal Robbery' by March 2010 from the baseline of 2008-09 (260 recorded crimes).



### 4. Domestic Violence

- To have a repeat Domestic Violence Incident rate of no more than 28% using the Multi Agency Risk Assessment Conference (MARAC) service as the measure.<sup>2</sup>
- To increase the number of Domestic Violence Incidents reported to the police by March 2010 from the baseline of 2008-09.



No quantitative measures are available quarterly

### 5. Reducing Re-Offending

### 6. Cycle Crime

- Reduce the number of Thefts or Unauthorised Taking of Cycles.



Key	
Number of offences has decreased	
Number of offences has not changed	
Number of offences has increased	

<sup>1</sup> Based upon content of 2008-11 Rolling-plan

<sup>2</sup> LAA countywide target

## **Areas of Concern**

### ***Serious Acquisitive***

Serious Acquisitive Crime has returned to being an area for concern during the most recent quarter Q1 2010-11 demonstrating the volatility in recording of offences within this category of crimes. The component crime Dwelling Burglary is of particular concern where offences recorded during the most recent quarter are 24% higher than the average for the same period over the past three years.

Offences in Personal Robbery are also up; the volume of recorded offences is 16% higher than for the same period the previous year and also higher than the average number of recorded crimes for the past three years.

On a positive note recorded offences in Vehicle Crime, to include both Theft Of and From Vehicles, are being driven down.

### ***Cycle Crime***

High recorded volumes of theft or unauthorised taking of cycles continue to occur within Cambridge City district. The partnership remains in last position in comparison to its most similar group members; during the month of June 2010 the highest volume of thefts was recorded in any month since at least 2006.

### ***Data requirements***

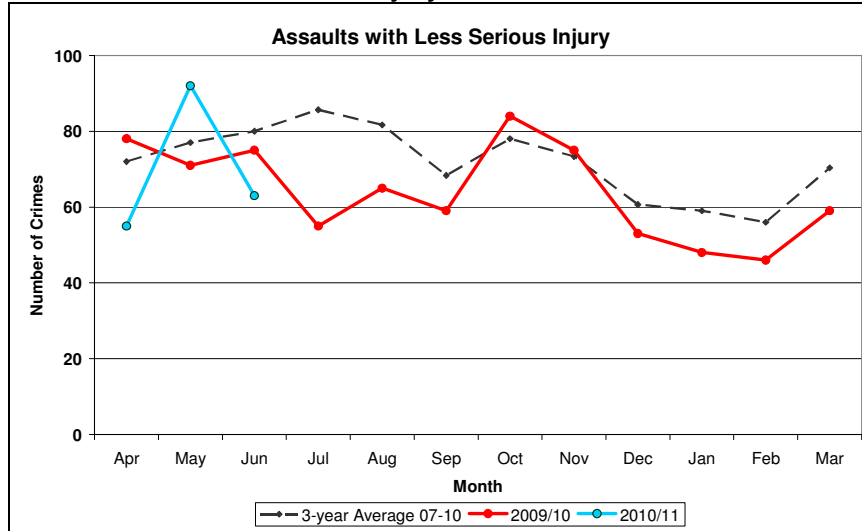
The Ambulance Trust is not currently sharing the call out data with the Research Group, Cambridgeshire County Council or Cambridgeshire Constabulary. This data is specified in the partnership guidance and appendix J of the partnership Information Sharing Agreement. Another request is being put through the PCT for the data, but the PCT do not hold the data at this time.

**SECTION ONE: ALCOHOL RELATED VIOLENT CRIME**

**Assault with Less Serious Injury**

This is not a perfect indicator of alcohol-related violent crime. However, because such a large proportion of violent crimes involve alcohol, movements in this indicator are likely to reflect successes in tackling alcohol related violence.

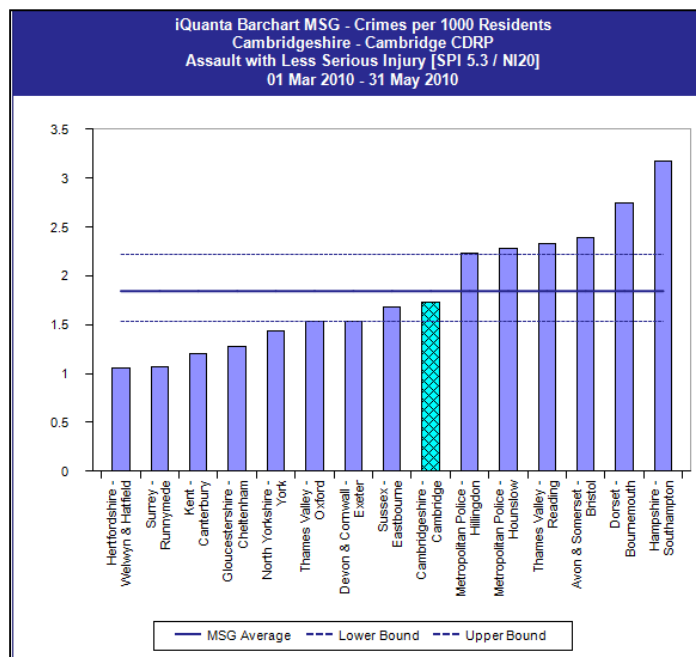
**Figure 1.1: Assault with Less Serious Injury**



Recorded offences for Assaults with Less Serious Injury peaked during May 2010 at volumes higher than the past 3-year average before returning to reduced levels in June. A total of 210 offences recorded so far this year remains within the target set for March 2010 for recorded offences to be less than the 2008-09 baseline of no more than 885 recorded crimes during the year.

**Figure 1.2: Assaults with Less Serious Injury – Position compared to most similar CDRPs<sup>3</sup>**

The partnership has declined from 3<sup>rd</sup> to 9<sup>th</sup> position when compared to most similar family group members during the past three months and is average in comparison to most similar family group members.



<sup>3</sup> iQuanta is updated monthly approximately 24<sup>th</sup> of each month. Therefore in the report for this quarter the most recent data available on iQuanta is the period ending May 2010.

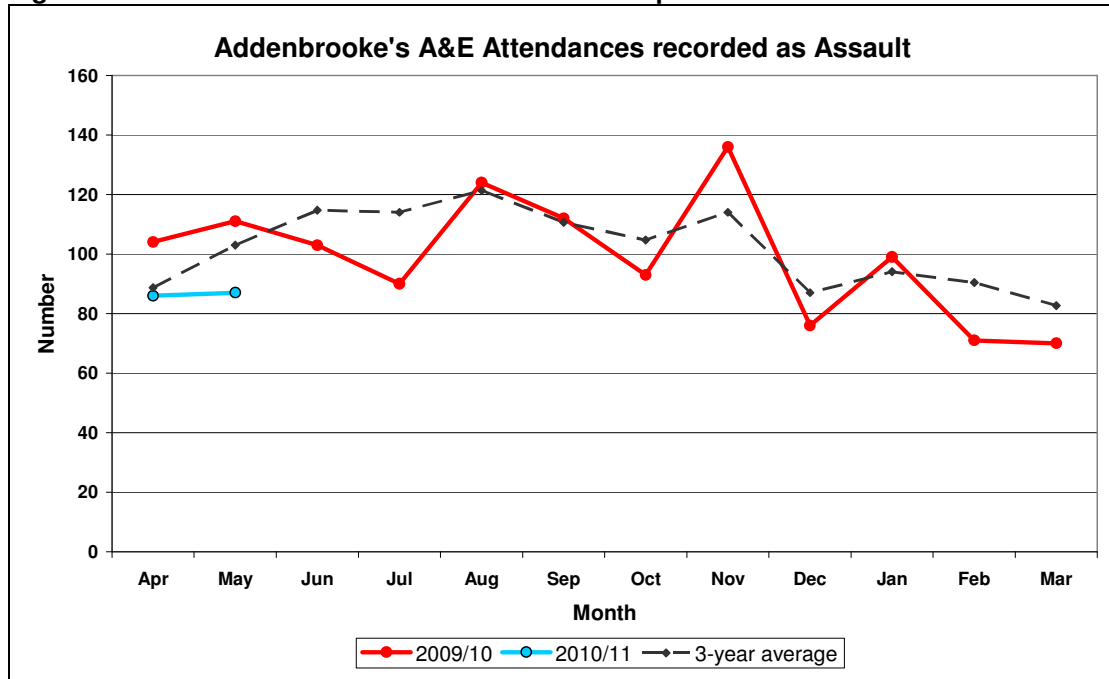
**Addenbrooke’s NHS Trust - A&E Data**

The partnership needs to be aware that this data is not collected for performance purposes. The method of data collection is as follows. A receptionist collects the data by asking the patient the details of the incident and then enters the data electronically. Limitations of the data are that the submission of information is voluntary, therefore not all patients will choose to answer and it will not possible for those patients too traumatised or inebriated to answer.

Further the data will include some cases that have been reported to the police and therefore will appear in the police figures as well. We currently do not know to what extent the data overlaps.

The chart below shows the number of attendances recorded as Assault admitted to Addenbrooke’s A&E department by month for the current year and the previous year. The dotted black line shows the average monthly attendance for the previous three years (Apr07-Mar10).

**Figure 1.3: A&E Attendances – Addenbrooke’s Hospital**



The data for this year shows the following:-

- Attendances recorded so far during 2010-11 are less than for the same period the previous year and below the previous 3-year average for attendances.
- The requirement is to reduce the number of Emergency Department attendees using Addenbrooke’s Emergency Department coded as ‘Assault’ by March 2010 from the baseline established in 2008-09.
- Attendances so far this year compared to 2008-09 are just 6 less at 173 compared to 179.

**SECTION TWO: ANTI-SOCIAL BEHAVIOUR**

**Perceptions of ASB**

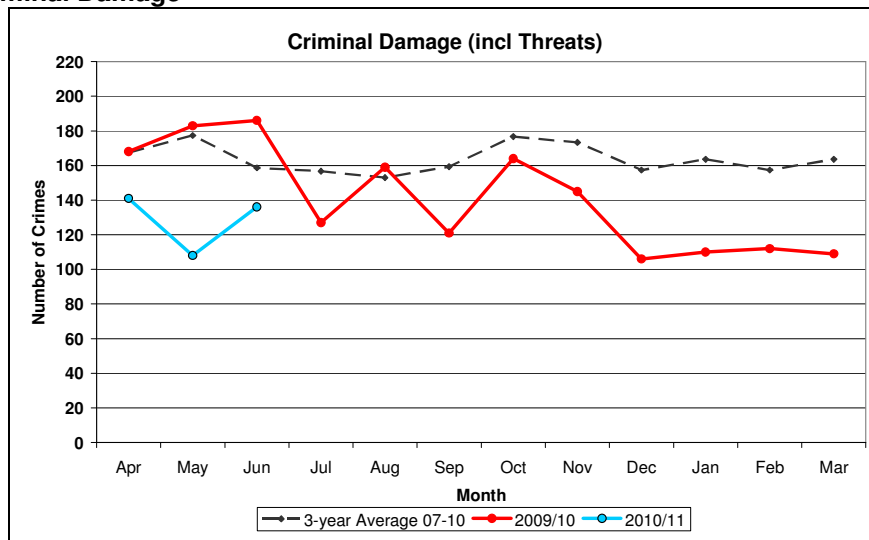
The table presents survey results; overall ASB recorded a lower level of concern. However nearly a third of respondents perceived drunk or rowdy behaviour to be a problem.

	2006 Quality of Life Survey	2008 Place Survey <sup>4</sup>
Percentage of people that consider ASB to be a concern (NI 17)	22%	15.2%
Percentage of people who perceive drunk or rowdy behaviour to be a problem in local area	25%	31.4%

**Criminal Damage – monitored as the crime most closely related to ASB**

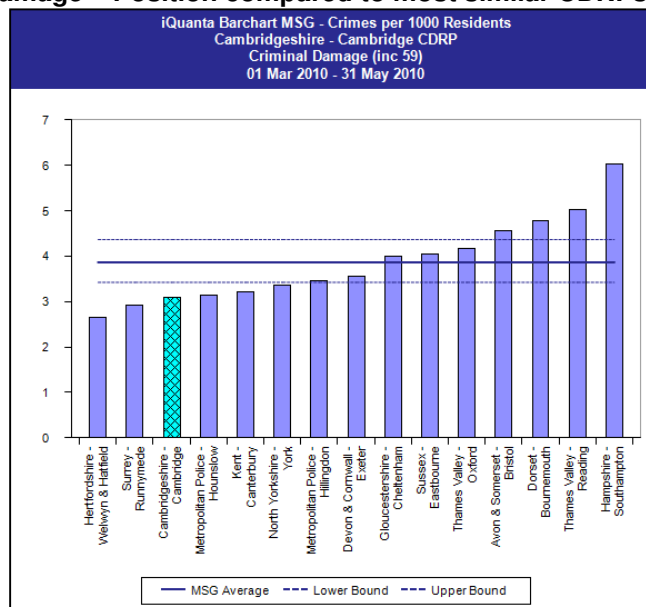
Recorded offences for Criminal Damage (incl. Threats) so far during 2010-11 are well below those for 2009-10 and also the past three year average for these crimes. The CDRP priority to reduce offences below levels for 2008-09 by Mar 2010 continues to be achieved.

**Figure 2.1: Criminal Damage**



For the second quarter in succession Cambridge City has improved, this time from 5<sup>th</sup> to 3<sup>rd</sup> position during the past three months, and lies better than average compared to most similar group members.

**Figure 2.2: Criminal Damage – Position compared to most similar CDRPs**



<sup>4</sup> Note these figures are from the most recent release and there have been slight alterations.

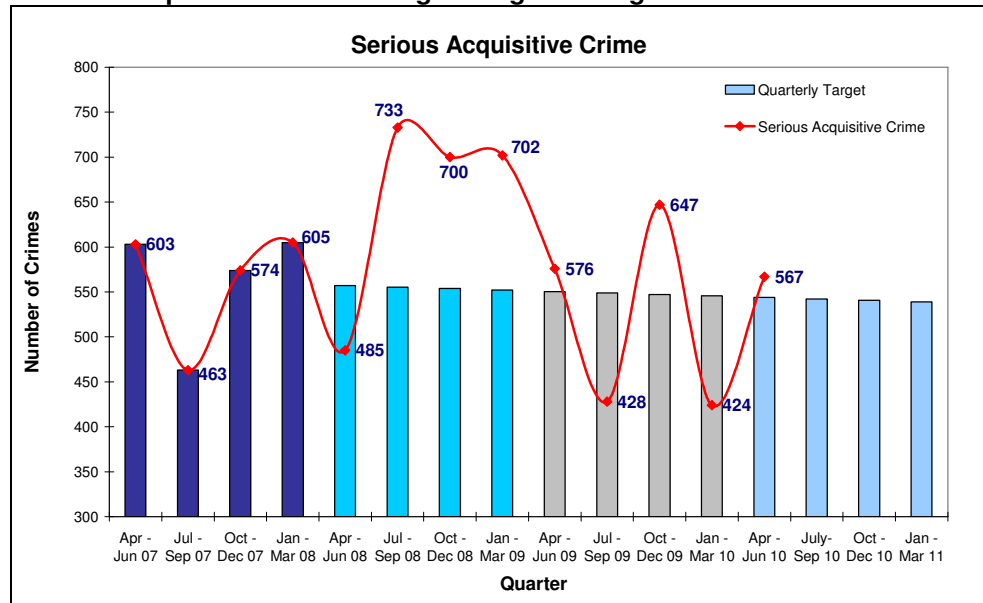
**SECTION THREE: SERIOUS ACQUISITIVE CRIME**

The volatility in numbers of crimes recorded under the banner of Serious Acquisitive Crime is once again apparent as the target for the most recent quarter, as can be seen from the chart, has not been met. Total recorded volumes are similar to the same three month period during 2009-10 and comprise the following:

- Dwelling Burglary - 244 offences up from 216 offences in Q1 2009-10
- Personal Robbery - 64 offences up from 55 offences in Q1 2009-10
- Business Robbery - 5 offences up from 2 offences in Q1 2009-10
- Theft from Vehicles - 198 offences down from 243 offences in Q1 2009-10
- Theft of Vehicles - 56 offences down from 60 offences in Q1 2009-10.

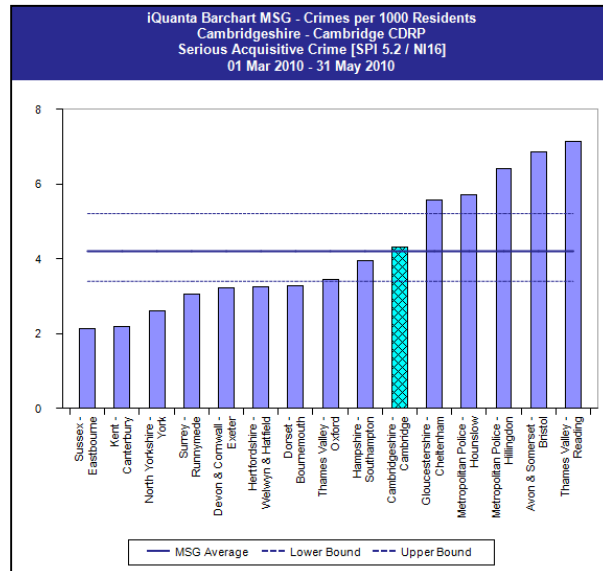
Dwelling Burglary represented 43% of all Serious Acquisitive Crime in this period. The CDRP priority to reduce offences by 3.5% by March 2011 from the 2007-08 base-line (2,245 crimes) and every effort is required to ensure volumes do not peak to those levels experienced in 2008-09.

**Figure 3.1: Serious Acquisitive Crime - Progress against target**



Cambridge City has slipped from 9<sup>th</sup> to 10<sup>th</sup> position and remains in an Average position when compared most similar group members over the past three months.

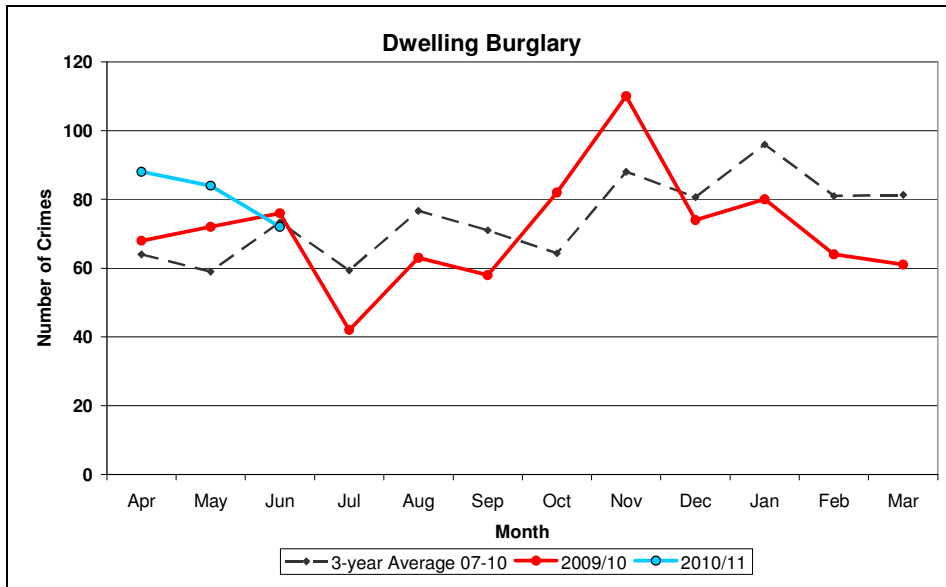
**Figure 3.2: Serious Acquisitive Crime – Position compared to most similar CDRPs**



**Burglary of Homes**

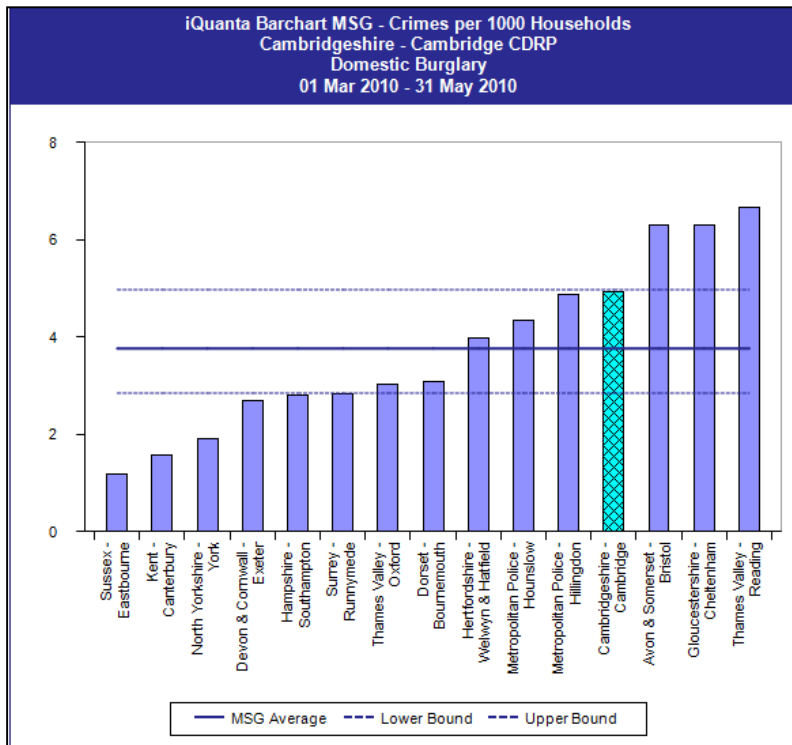
The requirement is to reduce dwelling burglary by 10% by March 2011 from the 2007-08 base-line (757 recorded crimes); this priority is currently not being achieved. For the first three months of the current year volumes are some 28% above base-line and 24% above average volumes for the past three years.

**Figure 3.3: Dwelling Burglary**



Cambridge City has slipped from 10<sup>th</sup> to 12<sup>th</sup> position and is on the point of Worse than Average in comparison to its most similar group members for the past three months.

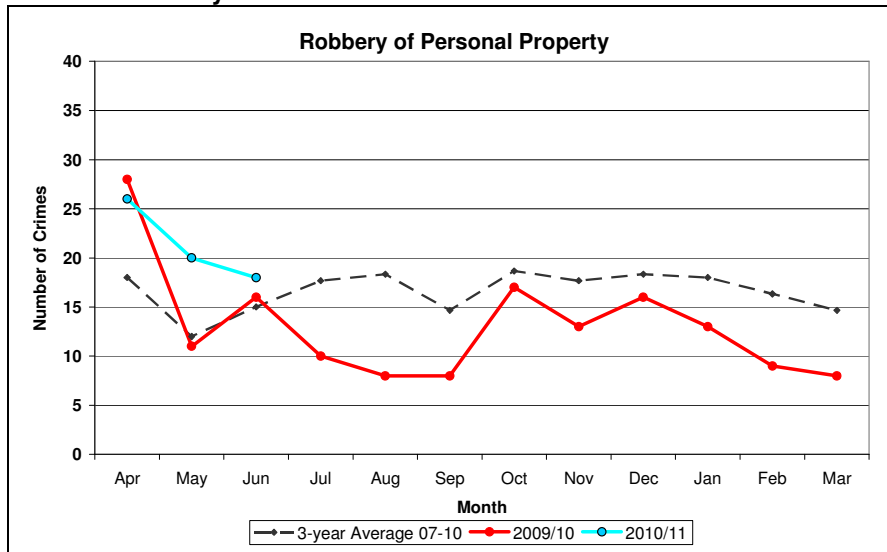
**Figure 3.4: Domestic Burglary – Position compared to most similar CDRPs**



**Personal Robbery**

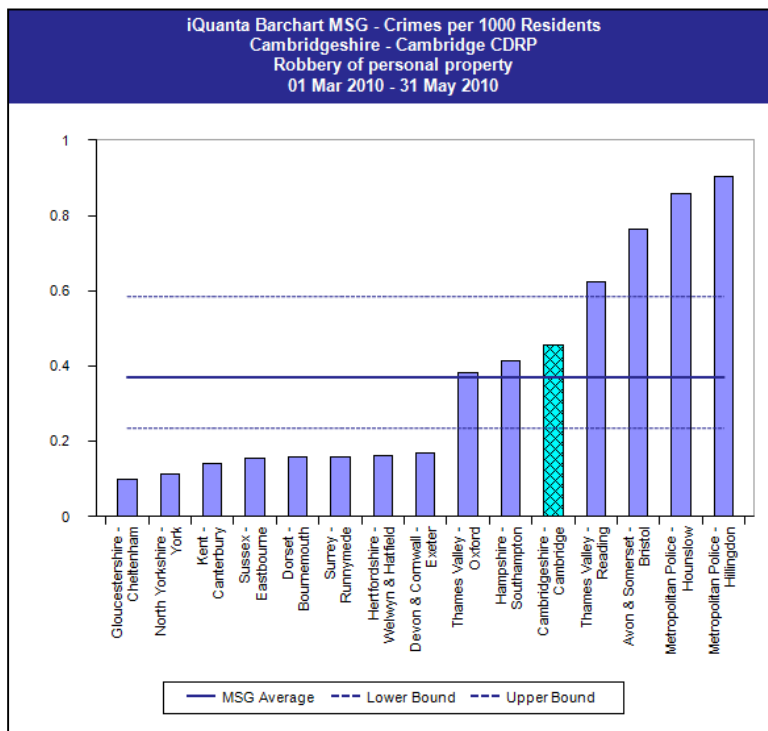
The requirement is to reduce 'Personal Robbery' by March 2010 from the baseline of 2008-09 (260 recorded crimes). For the first three months of 2010-11 this requirement is no longer being achieved. The volume of recorded offences is 16% higher than for the same period the previous year and also higher than the average number of recorded crimes for the past three years.

**Figure 3.5 Personal Robbery**



Cambridge City has slipped from 9<sup>th</sup> to 11<sup>th</sup> position but remains Average in comparison to its most similar group members over the past three months.

**Figure 3.6 Personal robbery – Position compared to most similar CDRPs**



**SECTION FOUR: DOMESTIC VIOLENCE**

**Multi-Agency Risk Assessment Conference (MARAC)**

Cambridgeshire	FY 2008-09	FY 2009-10	Q1 2010-11
Number of MARAC cases (Cambridgeshire)	271	399	146
NI 32 – Rate of repeat victimisation of MARAC cases	26%	27.5%	31.5%

The target for NI 32 is that the repeat rate should not be higher than 28%. The county target has not been achieved in the first quarter of 2010-11. The financial year 2008-09 was the baseline-setting year for the National Indicator (NI) 32.

**Independent Domestic Violence Advocacy Service (IDVAS)**

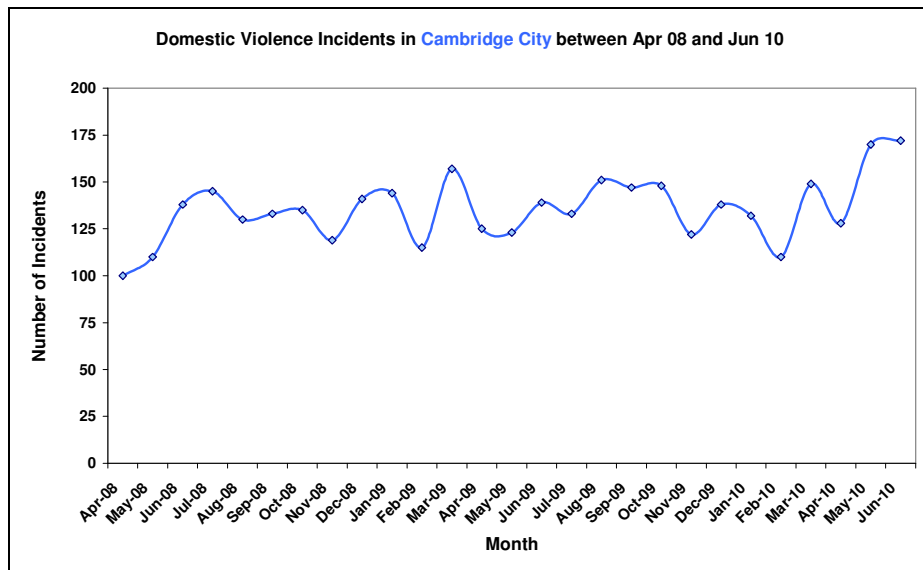
IDVAS works with high-risk cases across the county referred from Cambridgeshire Constabulary. The table below breaks down caseload by district for each quarter.

CDRP	2009-10 Q1	2009-10 Q2	2009-10 Q3	2009-10 Q4	Total 2009/10	2010-11 Q1
Cambridge City	68	86	80	58	292	79
East Cambridgeshire	35	30	26	21	112	23
Fenland	58	50	54	50	212	38
Huntingdonshire	59	51	52	71	233	95
South Cambridgeshire	34	30	31	41	136	33
Cambridgeshire	254	247	243	241	985	268

During Q1 2010-11 Cambridge City CDRP accounted for 29% of the referrals to the IDVAS. For the entire year 2009-10 Cambridge City CDRP accounted for 30% of referrals.

**Police Incident data**

The chart below shows the number of domestic abuse incidents per month within the district up to June 2010. These are ‘all incidents which have been closed as Domestic Incidents, either verbal or violent, where parties are over the age of 18. This measure is compliant with the ACPO definition of Domestic Abuse’.



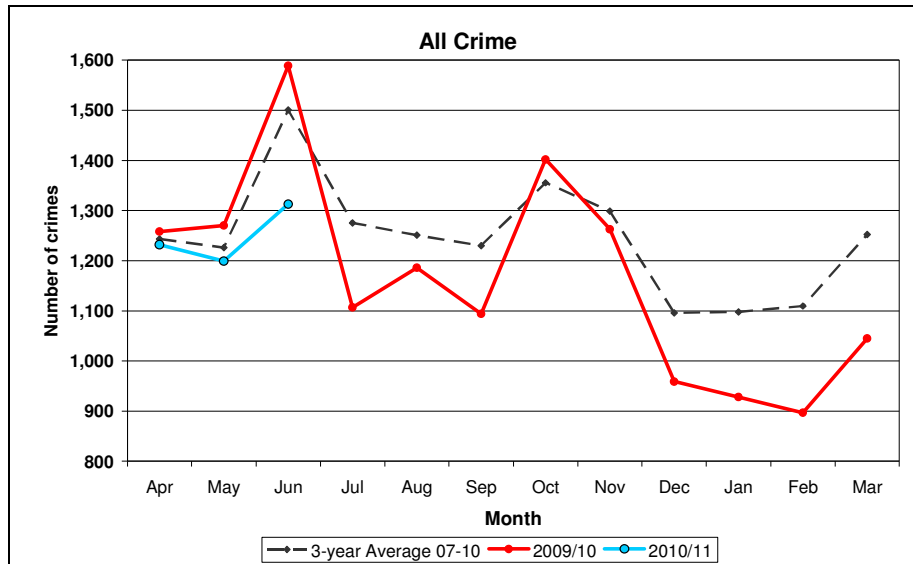
470 Domestic Violence incidents were reported to the police during the first three months of 2010-11 representing a 21% increase on the same period for the previous year. The requirement is to increase the number of Domestic Violence Incidents reported to the police by March 2010 from the baseline of 2008-09; this continues to be achieved and the reporting of Domestic Abuse incidents is always encouraged.

**SECTION FIVE: REDUCING RE-OFFENDING**

All criminal offences recorded so far during 2010-11 follow the same trend but slightly lower than for offences recorded during the previous three years. Total recorded offences so far during 2010-11 are 9% less than for the same period during 2009-10.

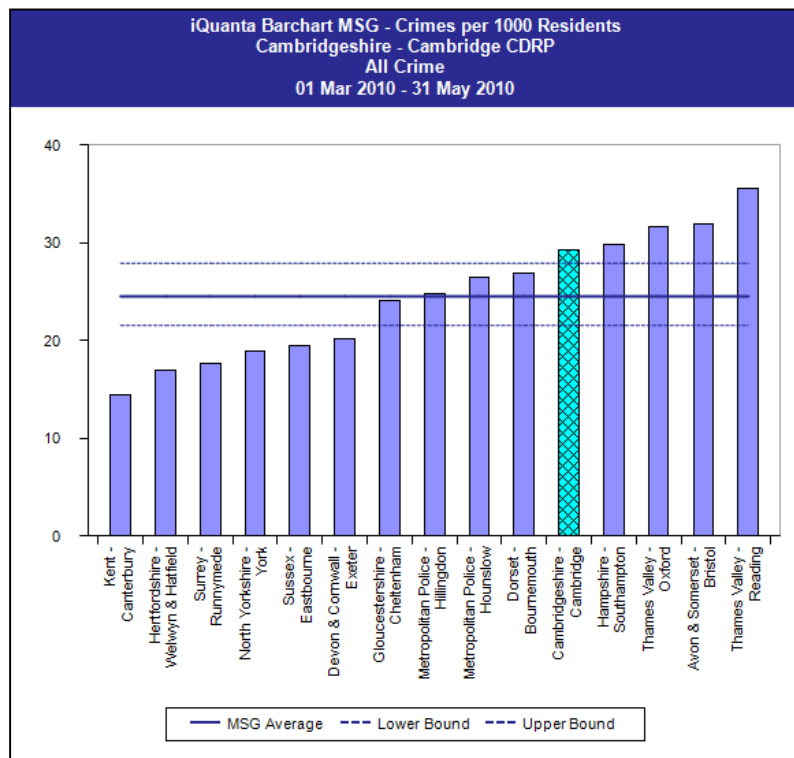
There is no quantitative measure available for all criminal offences combined.

**Figure 5.1 Total Crime**



Cambridge City has slipped from 9<sup>th</sup> to 11<sup>th</sup> position and is Worse than Average in comparison to its most similar group members for the most recent three months.

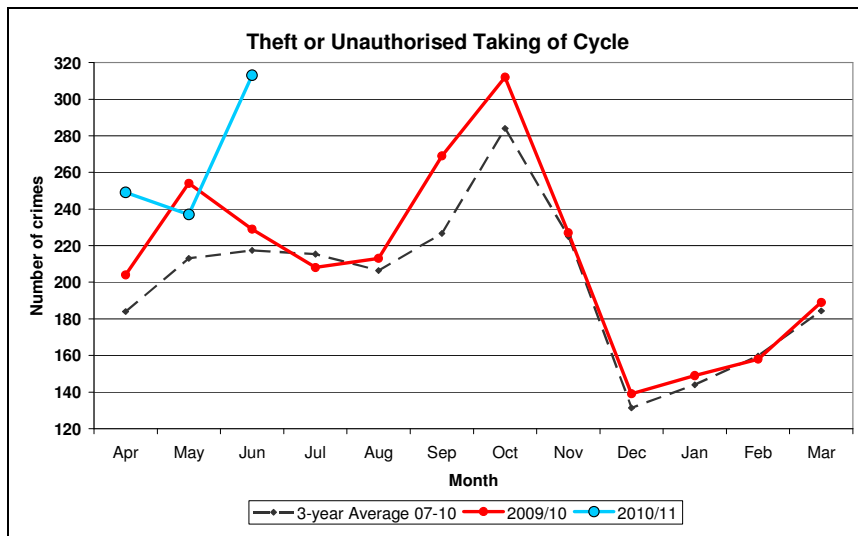
**Figure 5.2 Total Crime – Position compared to most similar CDRPs**



**SECTION SIX: CYCLE CRIME**

The requirement is simply to reduce the number of Thefts or Unauthorised Taking of Cycles. During the first three months of 2010-11 the volume of recorded thefts is clearly up on the previous year to include the month of Jun 2010 in which the highest volume of thefts was recorded in any month since at least 2006.

**Figure 6.1 Cycle Theft**



Cambridge City remains rooted in 15<sup>th</sup> and last position and clearly worse than average in comparison to its most similar group members during the past three months.

**Figure 6.2 Theft or Unauthorised Taking of a Cycle – Position compared to most similar CDRPs**

