

Cambridge City Community Safety Partnership



Performance Report

Q3 2009/10

AUTHOR:	Cambridgeshire County Council
CONTACT NO:	01223 715310
DATE:	January 2010
PRODUCED FOR:	Cambridge City Community Safety Partnership

Cambridge City Community Safety Partnership Performance Summary

Priorities¹

Direction of Travel

1. Alcohol Related Violent Crime

- To reduce 'assault with less serious injury' by March 2010 from the baseline of 2008/2009 (885 recorded crimes)
- To reduce the number of Emergency Department attendances coded as 'assault' by March 2010 from the baseline established in 2008/2009 using Addenbrooke's Emergency Department
- To reduce the number of Ambulance call outs for 'assault' by March 2010 from the baseline established in 2008/2009



No Data

2. Anti-Social Behaviour

- To reduce 'criminal damage' by March 2010 from the baseline of 2008/2009 (2,103 recorded crimes)



3. Serious Acquisitive Crime

- To reduce the number of 'serious acquisitive crimes' reported to the police (by concentrating on tackling dwelling burglary) by 3.5% by March 2011 from the baseline of 2007/2008 (2,245 recorded crimes). Ongoing 3-year target.²



Burglary of Homes

- To reduce 'dwelling burglaries' by 10% by March 2011 from the baseline of 2007/8 (757 recorded crimes). Ongoing 3-year target.



Personal Robbery

- To reduce 'personal robberies' by March 2010 from the baseline of 2008/2009 (260 recorded crimes)



4. Domestic Violence

- To increase the number of domestic violence incidents reported to the police by March 2010 from the baseline of 2008/2009.
- To have a repeat domestic violence incident rate of no more than 28% using the Multi Agency Risk Assessment Conference (MARAC) service as the measure.²



No quantitative measures are available quarterly

5. Reducing Re-Offending

6. Cycle Crime

- Reduce the number of thefts of cycles



Key	
Number of offences has decreased	
Number of offences has not changed	
Number of offences has increased	

¹ Based upon content of 2008-11 Rolling-plan

² LAA countywide target

Areas of Concern

Serious Acquisitive

Although Serious Acquisitive Crime exhibits significant increases in component themes when comparing current to previous quarter, the general direction of travel in cumulative figures for the financial year to date is a 14% decrease in recorded offences³ when compared to the same point in the previous financial year 2008-09.

Burglary Dwelling has previously 'peaked' in total recorded offences January 2009 and so it is recommended figures for the same period in 2010 are closely monitored.

Cycle Crime

The current quarter shows higher levels of recorded thefts of cycles than for the same quarter during 2008-09. Furthermore cumulative recorded thefts in the year to date are 8.4% higher than at the same point for the previous year.

Data requirements

The Ambulance Trust is not currently sharing the call out data with the Research Group, Cambridgeshire County Council or Cambridgeshire Constabulary. This data is specified in the partnership guidance and appendix J of the partnership Information Sharing Agreement. Another request is being put through the PCT for the data, but the PCT do not hold the data at this time.

The Research Group has not been provided with a recent update on the progress on this.

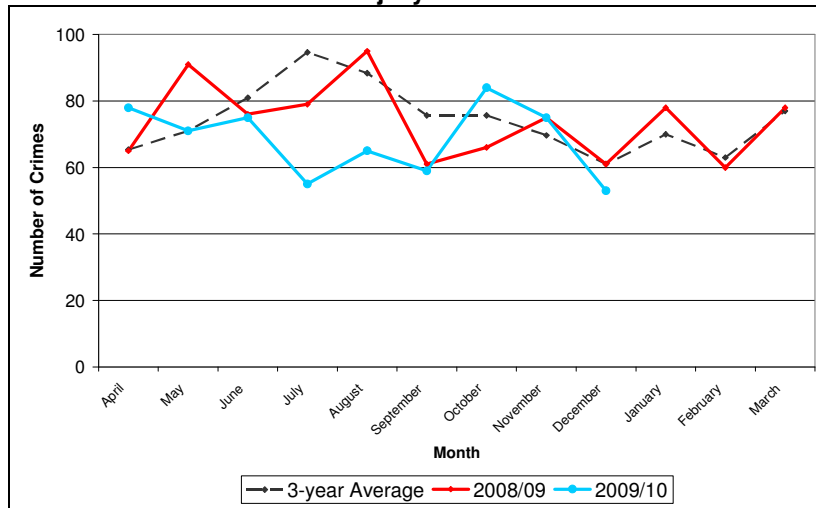
³ In all cases 'Year to date' represents Financial Year Apr 2009 to Dec 2009.

SECTION ONE: ALCOHOL RELATED VIOLENT CRIME

Assault with less serious injury

This is not a perfect indicator of alcohol-related violent crime. However, because such a large proportion of violent crimes involve alcohol, movements in this indicator are likely to reflect successes in tackling alcohol related violence.

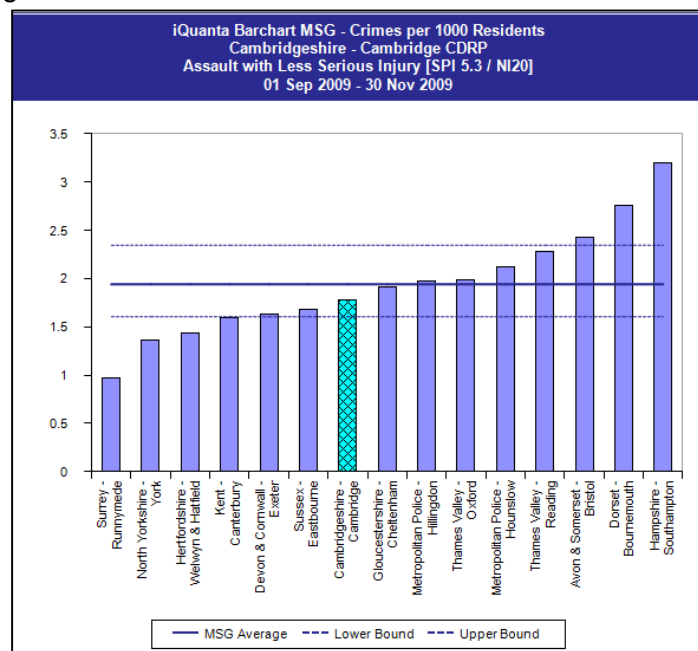
Graph 1.1: Assault with less serious injury - Trend



So far this year the cumulative total for Assault with Less Serious Injury indicates 615 offences compared to 669 at the same point in time the previous year demonstrating an 8% reduction in the recording of these crimes. During October recorded offences reached their highest monthly total in the year so far. Offences recorded for both October and November exceeded previous 3-year Average totals.

Graph 1.2 – Most similar CDRPs⁴

The bar chart shows that for the three month period to end Nov 09 the partnership was in 7th position out of 15 most similar partnership areas and slightly better than the group average.



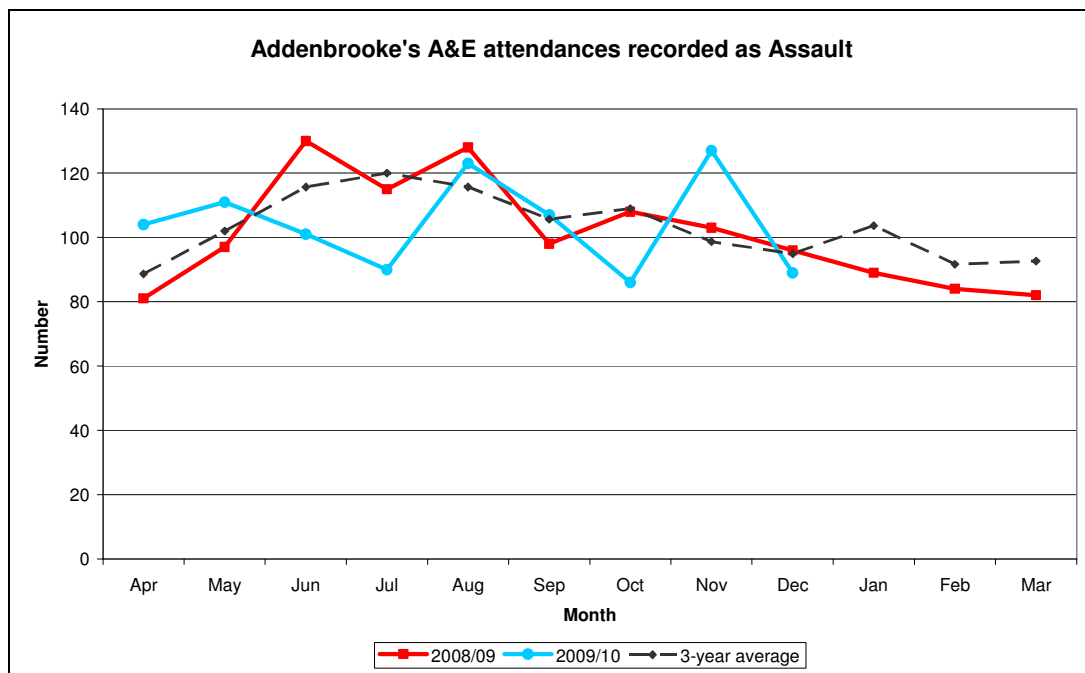
⁴ iQuanta is updated monthly approximately 24th of each month. Therefore for this quarters report the most recent data available on iQuanta is the period ending Nov 2009.

Addenbrooke's NHS Trust - A&E Data

The partnership needs to be aware that the data is not collected for performance purposes. The method of data collection is as follows. A receptionist collects the data by asking the patient the details of the incident and then enters the data electronically. Limitations of the data include that the submission of information is voluntary, therefore not all patients will choose to answer and it will not be possible for those patients too traumatised or inebriated to answer.

Further the data will include some cases that have been reported to the police and therefore will appear in the police figures as well. We currently do not know to what extent the data overlaps.

The chart below shows the number of attendances recorded as assault seen at Addenbrooke's A&E department by month for the current year and the previous year. The dotted black line shows the average monthly attendance for the previous three years (Apr06-Mar09)



The data for this year shows the following:

- The early part of this summer showed a lower number of attendances than the previous year and the 3-year average.
- There was a considerable increase in attendances for assault during the month of November.
- Cumulative attendances recorded for the year to date (938) are 2% down on attendances at the same point in time the previous year (956).
- Attendances recorded as Assault during the current quarter (302) Oct-Dec 2009 are not dissimilar to attendances at the same time the previous year (307).

SECTION TWO – ANTI-SOCIAL BEHAVIOUR

Perceptions of ASB

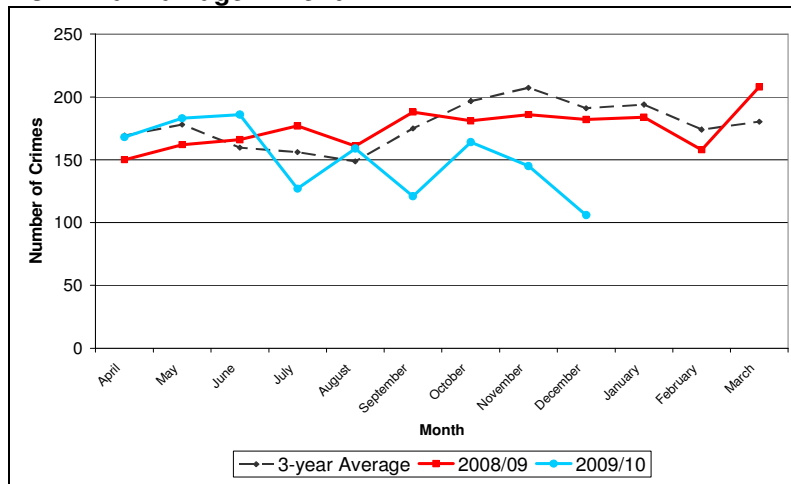
The following table presents the survey results; as can be seen overall ASB recorded a lower level of concern. However nearly a third of respondents perceived drunk or rowdy behaviour to be a problem.

	2006 Quality of Life Survey	2008 Place Survey ⁵
Percentage of people that consider ASB to be a concern (NI 17)	22%	15.2%
Percentage of people who perceive drunk or rowdy behaviour to be a problem in local area	25%	31.4%

Criminal Damage – monitored as the crime most closely related to ASB

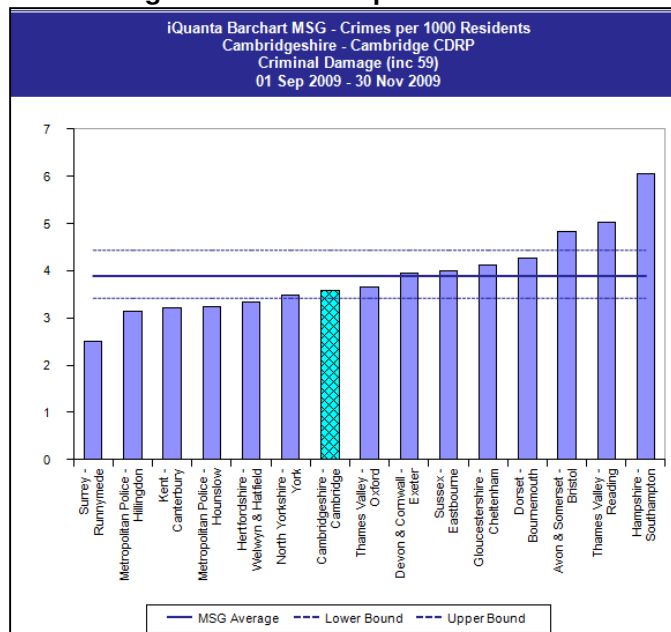
Cumulative Criminal damage recorded so far in the year to date (1,359) is 12% lower when compared with the same point in time in the previous year (1,553 offences). Note the significant reductions in offences recorded in July, September and December.

Graph 1.2: Criminal Damage – Trend



Cambridge City partnership lies in 7th position and average in its most similar group.

Graph 2.2: Criminal Damage – Position compared to most similar CDRPs



⁵ Note these figures are from the most recent release and there has been slight alterations

SECTION THREE: SERIOUS ACQUISITIVE CRIME

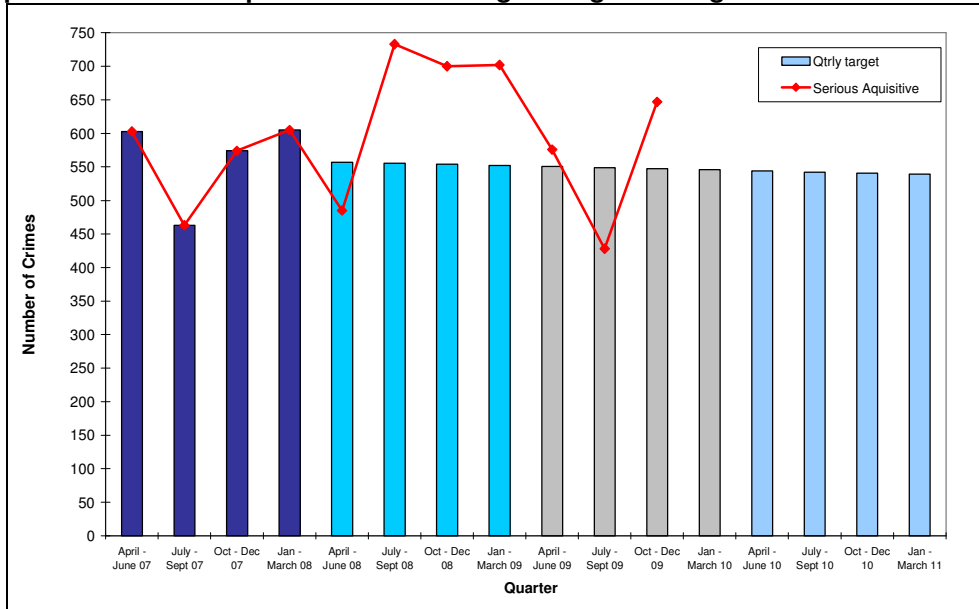
The following trends are apparent in serious acquisitive crime, since the previous quarter:

- A increase in dwelling burglary of 63% (from 163 to 266 offences)
- A increase in personal robbery of 77% (from 26 to 46 offences)
- A decrease in business robbery from 6 to zero offences.
- A increase in theft from vehicles of 50% (from 195 to 292 offences)
- A increase in theft of vehicles of 13% (from 38 to 43 offences)

Overall impact of these trends has been an increase of 51% (219 crimes) in serious acquisitive crime since the previous quarter.

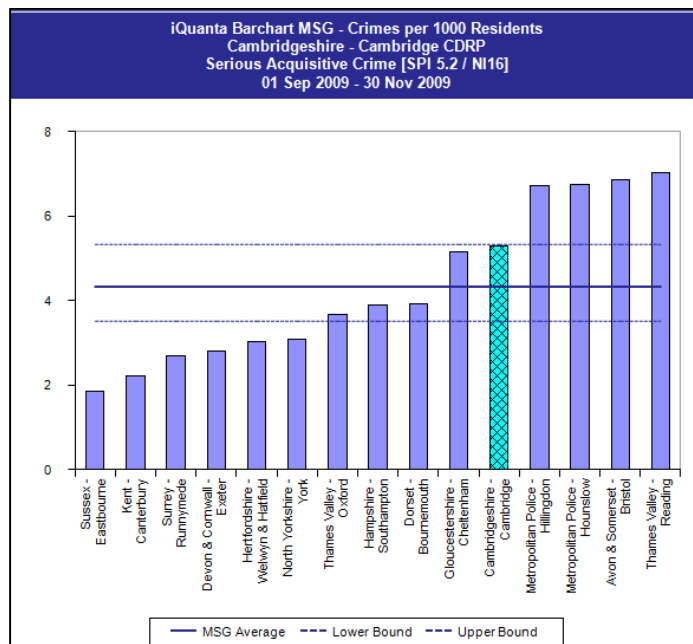
Cumulative number of recorded Serious Acquisitive Crimes for the year to date (1,651) show a 14% reduction compared to the same position the previous year (1,918).

Graph 3.1: Serious Acquisitive Crime - Progress against target



Cambridge City lies in 11th position and slightly worse than average in its most similar group.

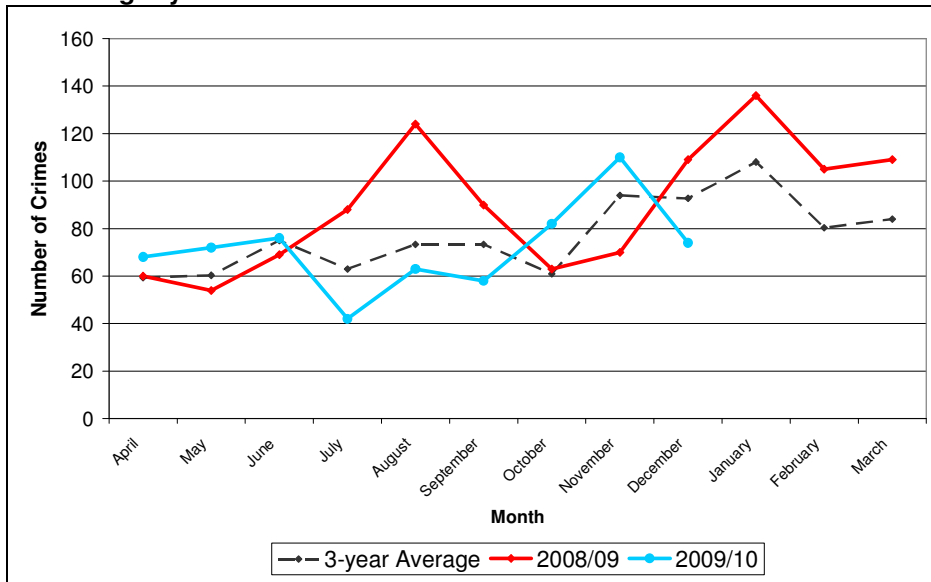
Graph 3.2: Serious Acquisitive Crime – Position compared to most similar CDRPs



Burglary of Homes

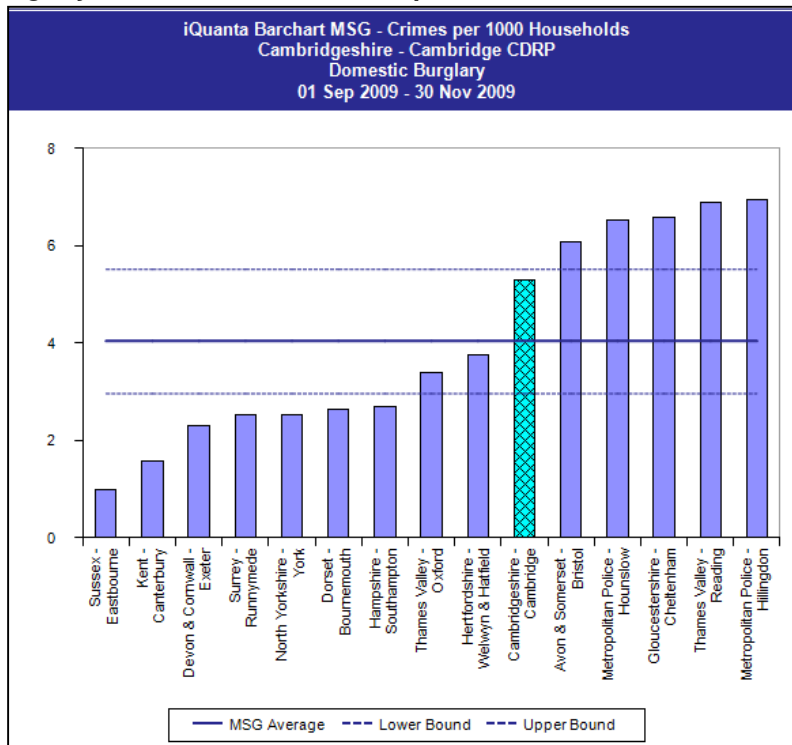
Cumulative number of Domestic Burglaries recorded so far this year (645) is 11% lower than at the same point in time the previous year (727 offences). A peak in recorded offences this year (November 2009) does not reflect the pattern for 2008-09. However this peak and the monthly totals recorded for the Burglary of Homes so far this year appear to closely mirror trends identified in the 3-year average of totals.

Graph 3.3: Burglary of homes - Trend



Cambridge City lies in 10th position and slightly worse than average in its most similar group.

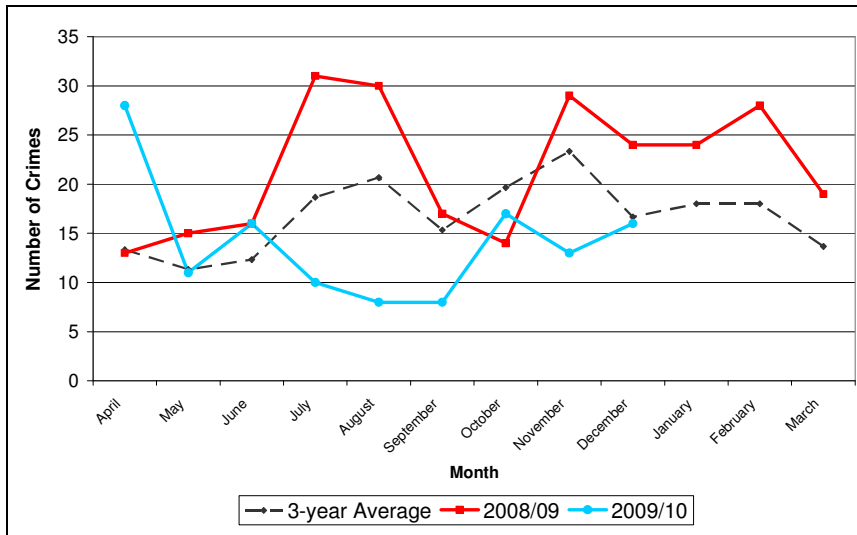
Graph 3.4: Burglary of homes – Position compared to most similar CDRPs



Personal Robbery

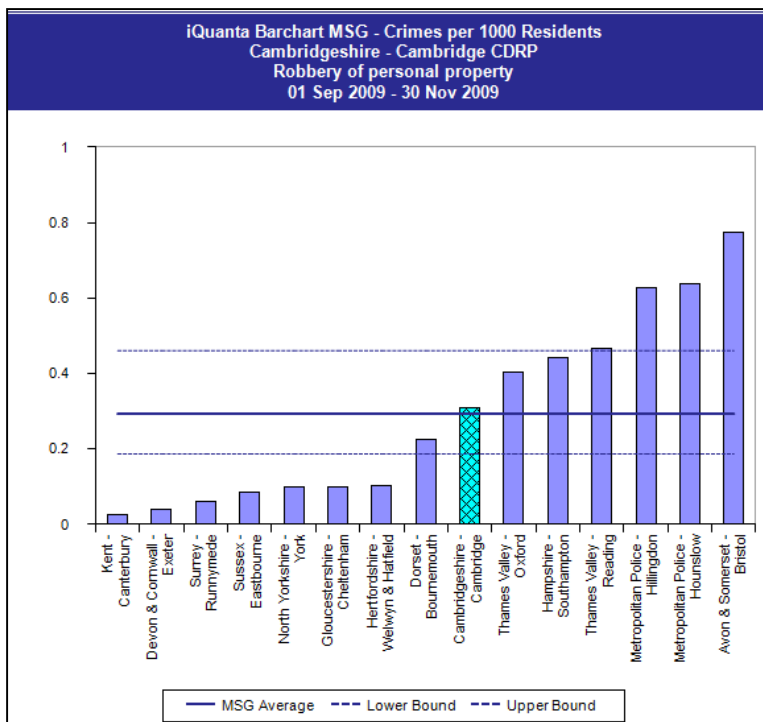
There are usually few Personal Robberies recorded each month. From a high of 28 offences recorded in Apr 09, cumulative offences recorded so far this year (127) are a third lower, and within 3-year average, than at the same time the previous year (189 offences).

Graph 3.5 Personal robbery – Trend



Cambridge City lies in 9th position and average in comparison to its most similar group.

Graph 3.6 Personal robbery – Position compared to most similar CDRPs



SECTION FOUR: DOMESTIC VIOLENCE

Multi-Agency Risk Assessment Conference (MARAC)

Cambridgeshire	FY 2008/09	Rolling Year ending Dec 09
Number of MARAC cases (Cambridgeshire)	271	330
NI 32 – Rate of repeat victimisation of MARAC cases	26%	27%

2008/09 was the baseline setting year for the National Indicator (NI) 32, therefore data is not available prior to April 2008. The target for NI 32 is that the repeat rate should not be higher than 28%. Therefore the county is currently on target.

Independent Domestic Violence Advocacy Service (IDVAS)

IDVAS works with high-risk cases across the county referred from Cambridgeshire Constabulary. The table below breaks down caseload by district for each quarter.

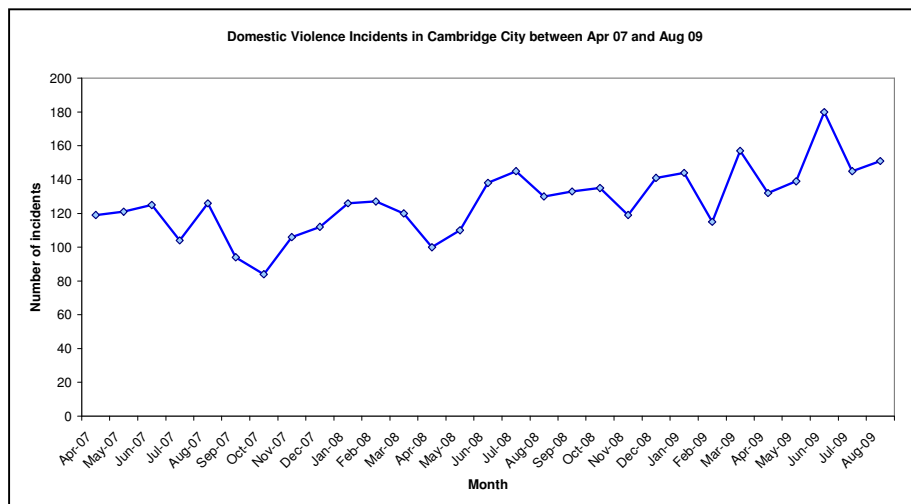
CDRP	2009/10 Q1	2009/10 Q2	2009/10 Q3	2009/10 Q4
Cambridge City	109	107	74	
East Cambridgeshire	46	35	26	
Fenland	83	62	60	
Huntingdonshire	82	64	46	
South Cambridgeshire	46	45	31	
<i>Cambridgeshire</i>	<i>366</i>	<i>313</i>	<i>237</i>	

During this quarter Cambridge CSP accounted for 31% of the referrals to the IDVAS.

Please note the quarter 3 data for the IDVAS caseload appears small. The Domestic Abuse Partnership Manager is investigating a potential data error within the recording system. Therefore these figures are subject to possible change.

Police Incident data

The chart below shows the number of domestic abuse incidents per month within the city up to August 2009. The most recent download from Cambridgeshire Constabulary for the domestic violence incidence data appears to be incorrect. The matter is being investigated and the figures will be circulated as soon as they are available.

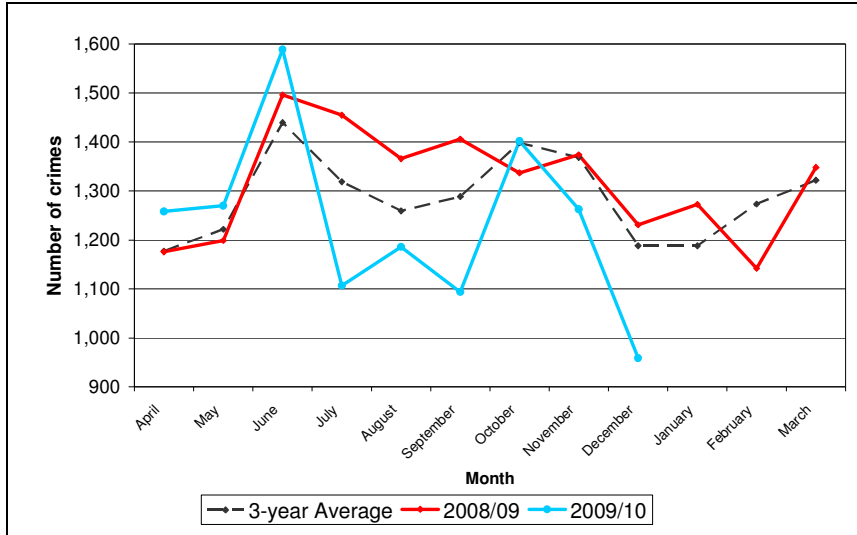


Produced by Cambridgeshire County Council Research Group Jan 2010

SECTION FIVE: REDUCING RE-OFFENDING

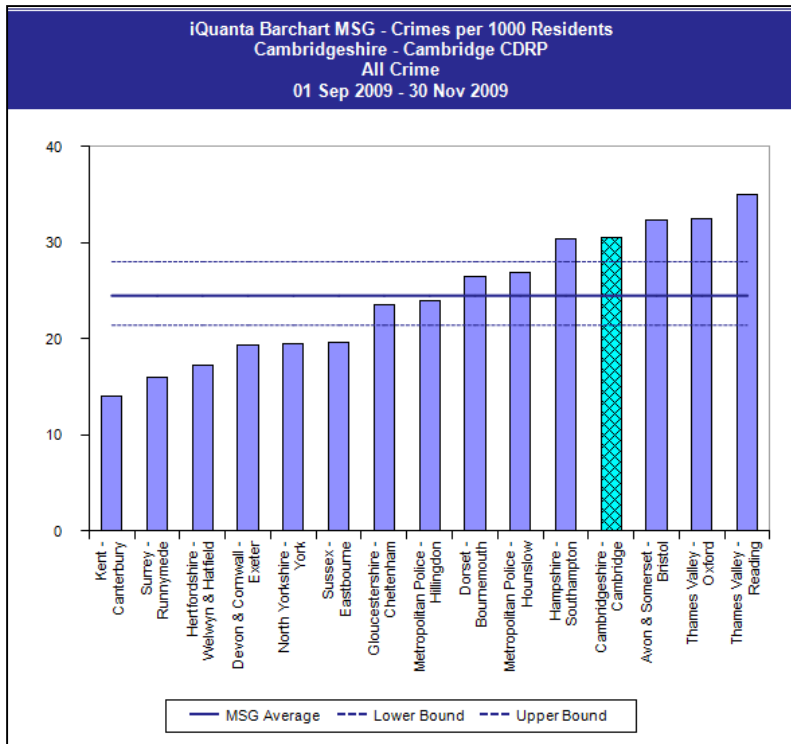
Cumulative total crime recorded so far this year is 8% lower (11,128) when compared with the previous year (12,040 offences). Note the significant spikes in recorded offences in June and October this year. The trend in totals so far this year appears to follow a similar pattern in increases and decreases to the prior 3-year average totals.

Graph 5.1 Total Crime - Trend



Cambridge City lies in 12th position and worse than average in comparison to its most similar group for the 3 months to end Nov 2009.

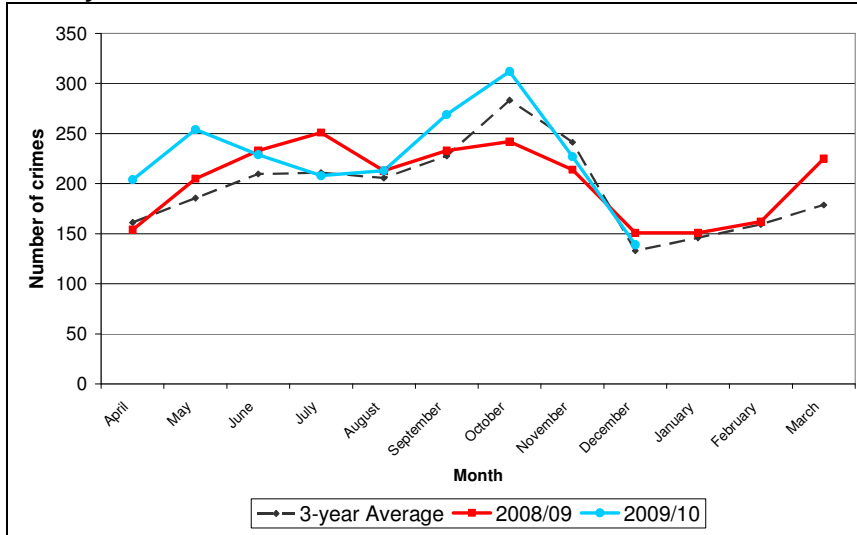
Graph 5.2 Total Crime – Position compared to most similar CDRPs



SECTION SIX: CYCLE CRIME

Cumulative cycle theft recorded so far this year (2,055) is 8% higher than at the same point the previous year (1,896 offences). Monthly totals have frequently been higher than the 3-year average totals.

Graph 6.1 Cycle Theft – Trend



Cambridge City lies in last position and worse than average in comparison to its most similar group.

Graph 6.2 Theft or Unauthorised Taking of a Cycle – Position compared to most similar CDRPs

