

Cambridge City Community Safety Partnership



Performance Report

Q4 – 2009-10

AUTHOR:	Cambridgeshire County Council
CONTACT NO:	01223 728556
DATE:	April 2010
PRODUCED FOR:	Cambridge City Community Safety Partnership

Cambridge City Community Safety Partnership Performance Summary

Priorities¹

Progress

1. Alcohol Related Violent Crime

- To reduce 'Assault with Less Serious Injury' by March 2010 from the baseline of 2008-09 (885 recorded crimes).
- To reduce the number of Emergency Department attendances coded as 'Assault' by March 2010 from the baseline established in 2008-09 using Addenbrooke's Emergency Department.
- To reduce the number of Ambulance call outs for 'Assault' by March 2010 from the baseline established in 2008-09.



No Data

2. Anti-Social Behaviour

- To reduce 'Criminal Damage' by March 2010 from the baseline of 2008-09 (2,103 recorded crimes).



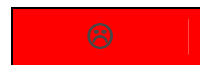
3. Serious Acquisitive Crime

- To reduce the number of 'Serious Acquisitive Crimes' reported to the police (by concentrating on tackling dwelling burglary) by 3.5% by March 2011 from the baseline of 2007-08 (2,245 recorded crimes). Ongoing 3-year target.²



Burglary of Homes

- To reduce 'Dwelling Burglary' by 10% by March 2011 from the baseline of 2007-08 (757 recorded crimes). Ongoing 3-year target.



Personal Robbery

- To reduce 'Personal Robbery' by March 2010 from the baseline of 2008-09 (260 recorded crimes).



4. Domestic Violence

- To have a repeat Domestic Violence Incident rate of no more than 28% using the Multi Agency Risk Assessment Conference (MARAC) service as the measure.²
- To increase the number of Domestic Violence Incidents reported to the police by March 2010 from the baseline of 2008-09.



No quantitative measures are available quarterly

5. Reducing Re-Offending

6. Cycle Crime

- Reduce the number of Thefts or Unauthorised Taking of Cycles.



Key	
Number of offences has decreased	
Number of offences has not changed	
Number of offences has increased	

¹ Based upon content of 2008-11 Rolling-plan

² LAA countywide target

Areas of Concern

Serious Acquisitive

A significant reduction in recorded Serious Acquisitive Crimes during the most recent quarter has ensured that the priority to reduce offences by 3.5% from the 2007-08 baseline is now being achieved. Each of the component crime types (apart from the low recorded crime Business Robbery) has shown some significant improvements.

However Serious Acquisitive Crime should remain an area for closer inspection and monitoring on account of the apparent volatility in numbers of crimes, in particular dwelling burglary, recorded each quarter.

Cycle Crime

As reported during the previous quarter, the current quarter continues to evidence high volumes of recorded theft or unauthorised taking of cycles. There is a clear seasonal trend to thefts and the partnership remains in last position in comparison to its most similar group members.

Data requirements

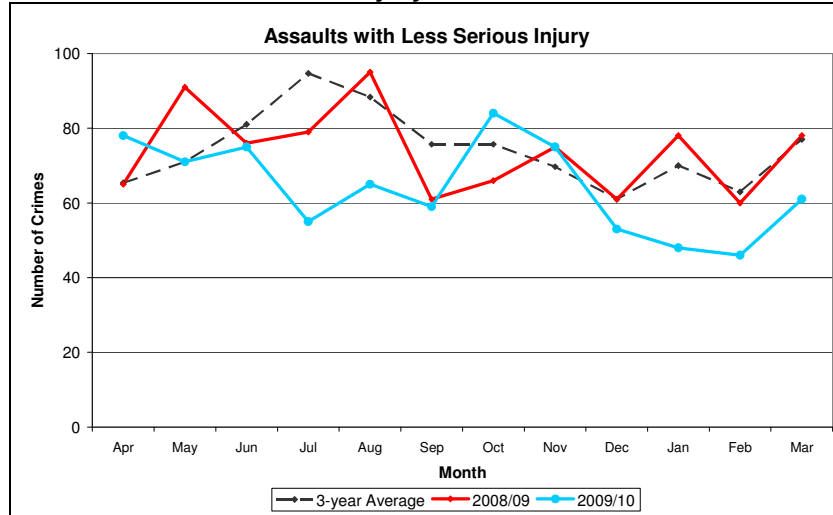
The Ambulance Trust is not currently sharing the call out data with the Research Group, Cambridgeshire County Council or Cambridgeshire Constabulary. This data is specified in the partnership guidance and appendix J of the partnership Information Sharing Agreement. Another request is being put through the PCT for the data, but the PCT do not hold the data at this time.

SECTION ONE: ALCOHOL RELATED VIOLENT CRIME

Assault with Less Serious Injury

This is not a perfect indicator of alcohol-related violent crime. However, because such a large proportion of violent crimes involve alcohol, movements in this indicator are likely to reflect successes in tackling alcohol related violence.

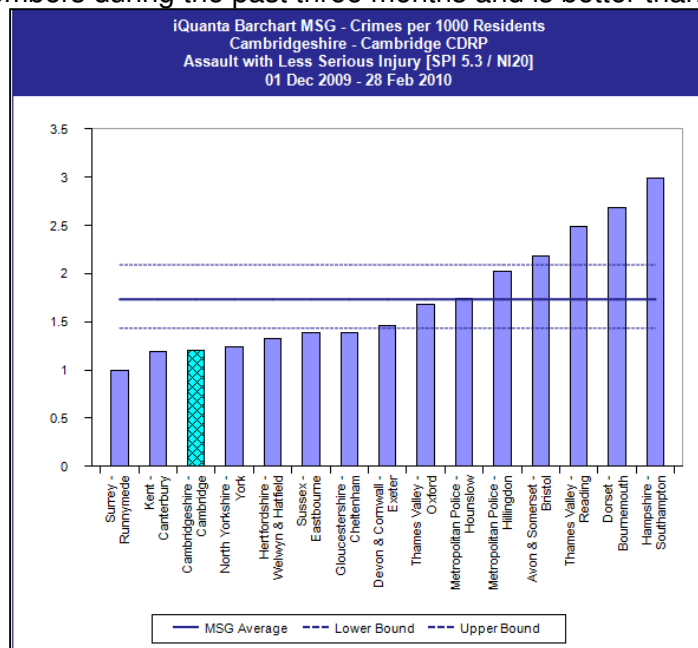
Figure 1.1: Assault with Less Serious Injury



Recorded offences for Assaults with Less Serious Injury during 2009-10 are 13.0% lower (770 offences to end Mar 10) than at the same time the previous year 2008-09 (885). Apart from a significant peak in recorded offences during Oct-Nov09 offences have been lower in all other months Good results in recent months mean the CDRP priority to reduce offences below levels for 2008-09 has been achieved.

Figure 1.2: Assaults with Less Serious Injury – Position compared to most similar CDRPs³

The partnership has improved from 7th to 3rd position when compared to most similar family group members during the past three months and is better than the group average.



³ iQuanta is updated monthly approximately 24th of each month. Therefore in the report for this quarter the most recent data available on iQuanta is the period ending Feb 2010.

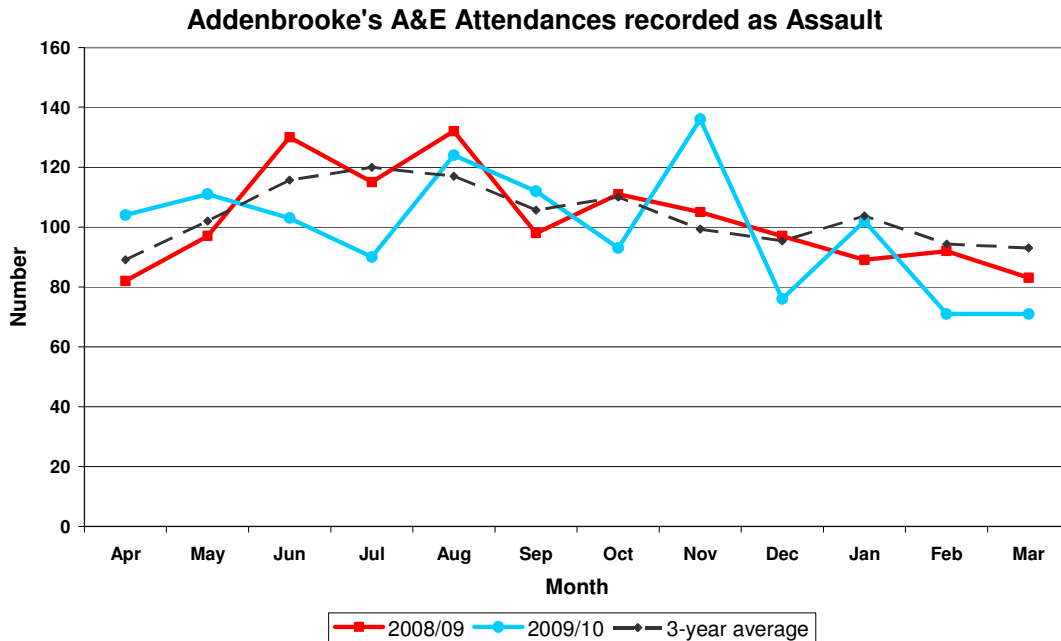
Addenbrooke’s NHS Trust - A&E Data

The partnership needs to be aware that this data is not collected for performance purposes. The method of data collection is as follows. A receptionist collects the data by asking the patient the details of the incident and then enters the data electronically. Limitations of the data are that the submission of information is voluntary, therefore not all patients will choose to answer and it will not possible for those patients too traumatised or inebriated to answer.

Further the data will include some cases that have been reported to the police and therefore will appear in the police figures as well. We currently do not know to what extent the data overlaps.

The chart below shows the number of attendances recorded as Assault admitted to Addenbrooke’s A&E department by month for the current year and the previous year. The dotted black line shows the average monthly attendance for the previous three years (Apr06-Mar09).

Figure 1.3: A&E Attendances – Addenbrooke’s Hospital



The data for this year shows the following:-

- Attendances recorded to the end of March 2010 are slightly less by 3.1% (1,193) than for the same 12 month period during the previous year (1,231).
- Progress to reduce number of A&E attendances recorded as Assault against the 2008-09 baseline therefore appears to be minimal.
- There was a considerable increase in attendances for assault during Nov-09 and also peaks above the 3 year average during Apr-May09 and Aug-09.
- Attendances were at their lowest during Dec-09 and Mar-10.

SECTION TWO – ANTI-SOCIAL BEHAVIOUR

Perceptions of ASB

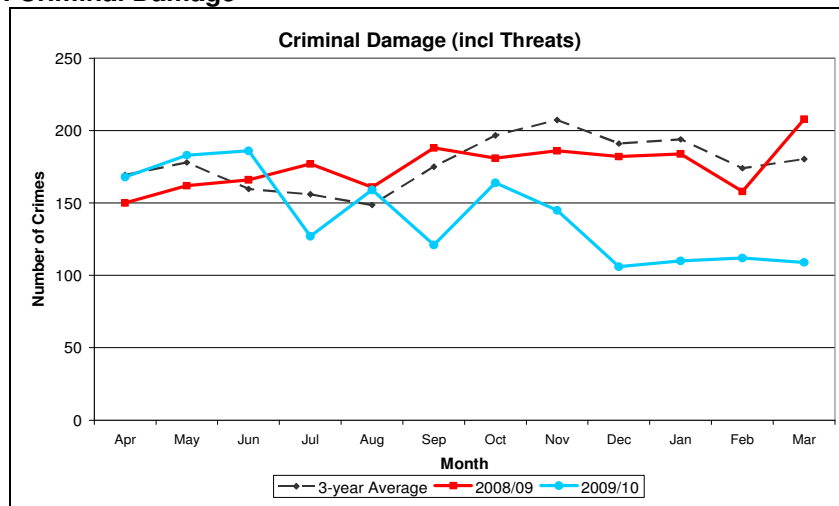
The table presents survey results; overall ASB recorded a lower level of concern. However nearly a third of respondents perceived drunk or rowdy behaviour to be a problem.

	2006 Quality of Life Survey	2008 Place Survey ⁴
Percentage of people that consider ASB to be a concern (NI 17)	22%	15.2%
Percentage of people who perceive drunk or rowdy behaviour to be a problem in local area	25%	31.4%

Criminal Damage – monitored as the crime most closely related to ASB

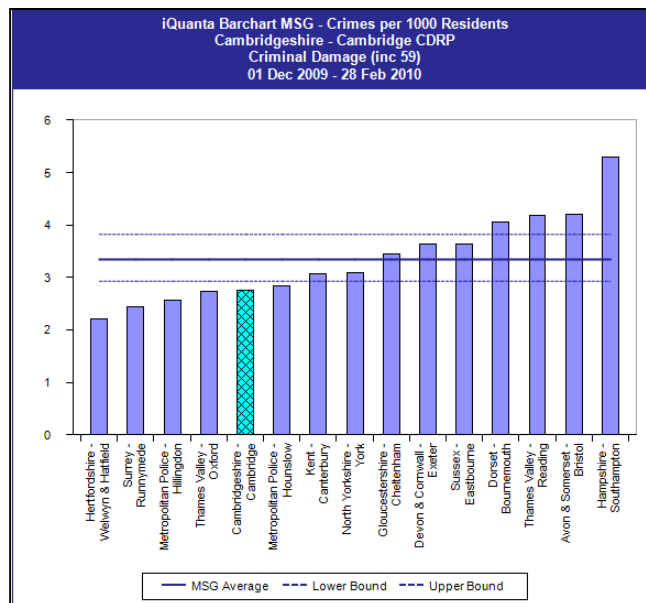
Recorded offences for Criminal Damage (incl. Threats) during 2009-10 are 19.6% lower (1,690 offences to end Mar 10) than in 2008-09 (2,103). Since Jul-09 recorded offences have consistently been less than the previous year and, particularly during the last quarter, significantly less than the previous 3-year average for these crimes. The CDRP priority to reduce offences below levels for 2008-09 has been soundly achieved.

Figure 2.1: Criminal Damage



Cambridge City partnership has improved from 7th to 5th position during the past three months and is reported as better than average when compared to most similar group members.

Figure 2.2: Criminal Damage – Position compared to most similar CDRPs



⁴ Note these figures are from the most recent release and there have been slight alterations.

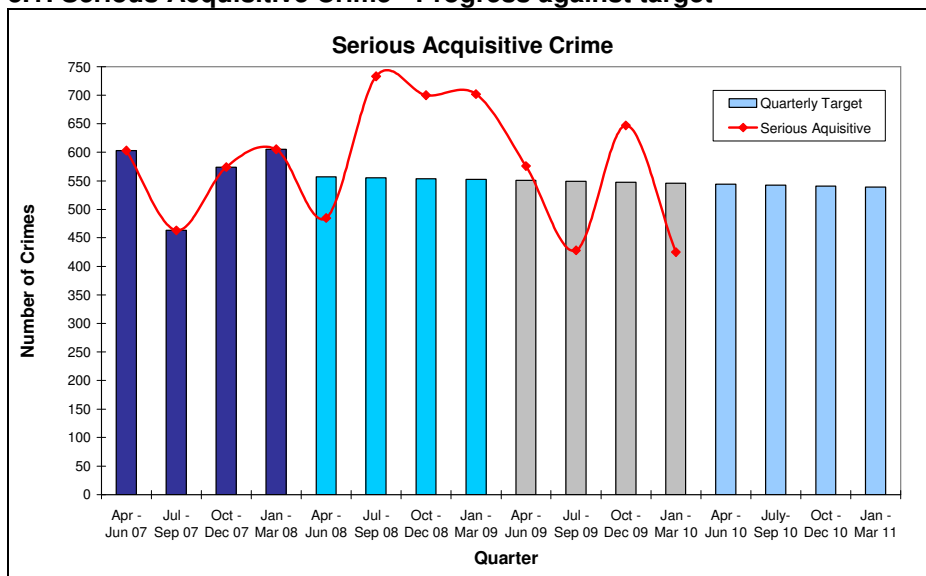
SECTION THREE: SERIOUS ACQUISITIVE CRIME

The following trends are apparent in Serious Acquisitive Crime during the year 2009-10;

- A decrease in dwelling burglary of 21% (from 1,077 to 850 offences)
- A decrease in personal robbery of 39% (from 260 to 158 offences)
- An increase in business robbery of 27% (from 11 to 14 offences)
- A decrease in theft from vehicles of 14% (from 1,017 to 872 offences)
- A decrease in theft of vehicles of 29% (from 255 to 182 offences).

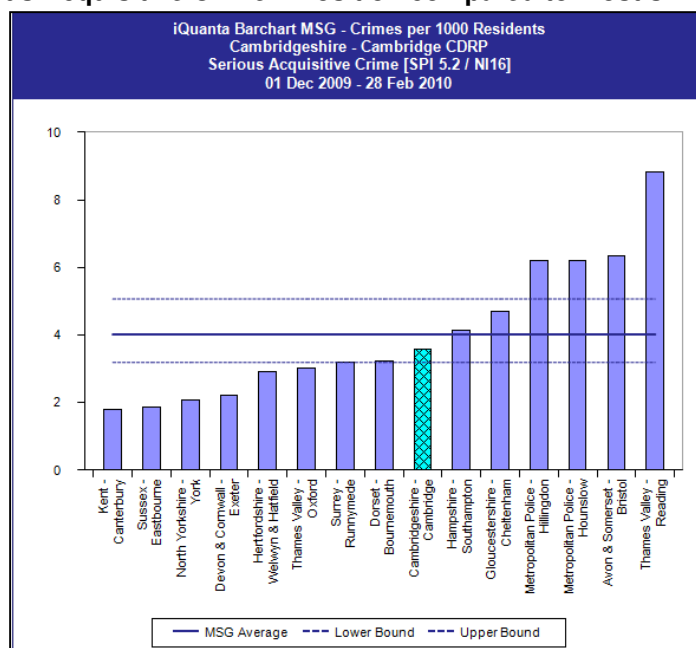
Overall impact of these trends has been a decrease of 21% (544 crimes) in serious acquisitive crime during 2009-10 when compared to the previous financial year 2008-09. The CDRP priority to reduce offences by 3.5% from the 2007-08 baseline (2,245 crimes) is being achieved following significant reductions during the 2nd and 4th quarters 2009-10.

Figure 3.1: Serious Acquisitive Crime - Progress against target



Cambridge City has improved from 11th to 9th position and is in an Average position when compared most similar group members over the past three months.

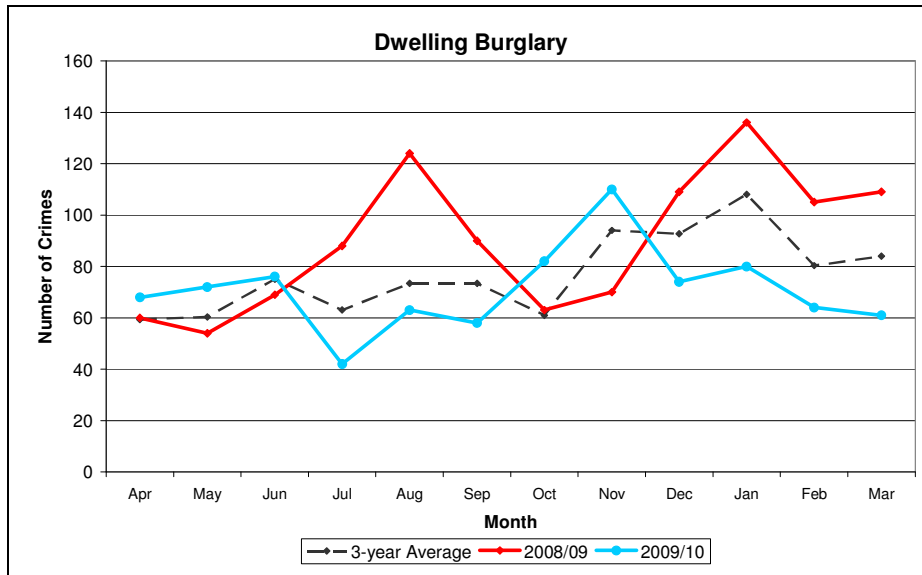
Figure 3.2: Serious Acquisitive Crime – Position compared to most similar CDRPs



Burglary of Homes

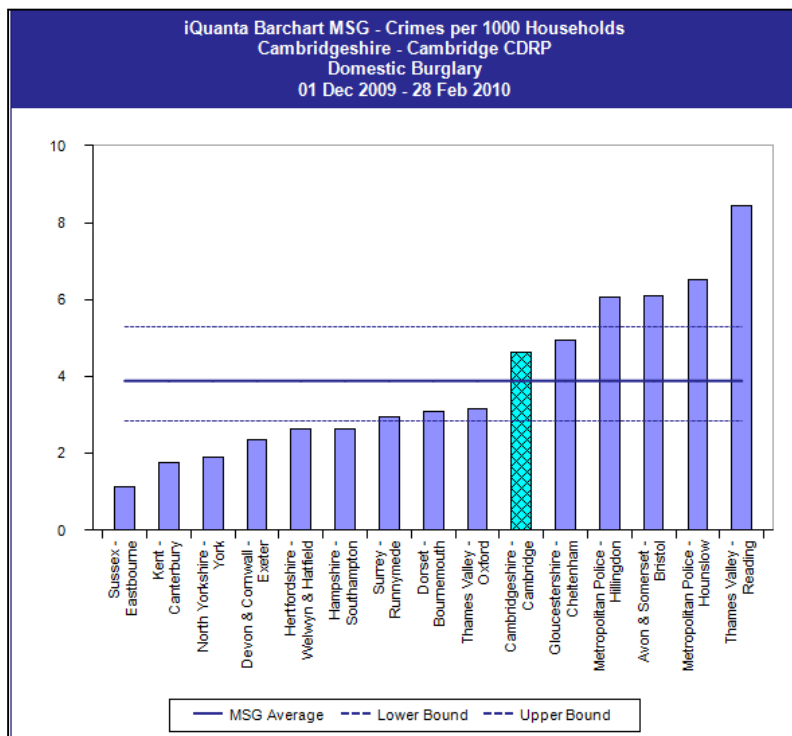
Recorded offences for Dwelling Burglary during 2009-10 are 21.1% lower (850 offences to end Mar 10) than at the same time the previous year 2008-09 (1,077). Apart from a significant peak in recorded offences during Oct-Nov 09 results over the past four months have been particularly encouraging and well within the previous 3-year average. However there remains much work to be done to reduce dwelling burglary by 10% from the 2007-08 baseline (757 recorded crimes) and this priority is currently not being achieved.

Figure 3.3: Dwelling Burglary



Cambridge City remains in 10th position and Average in comparison to its most similar group members for the past three months.

Figure 3.4: Domestic Burglary – Position compared to most similar CDRPs



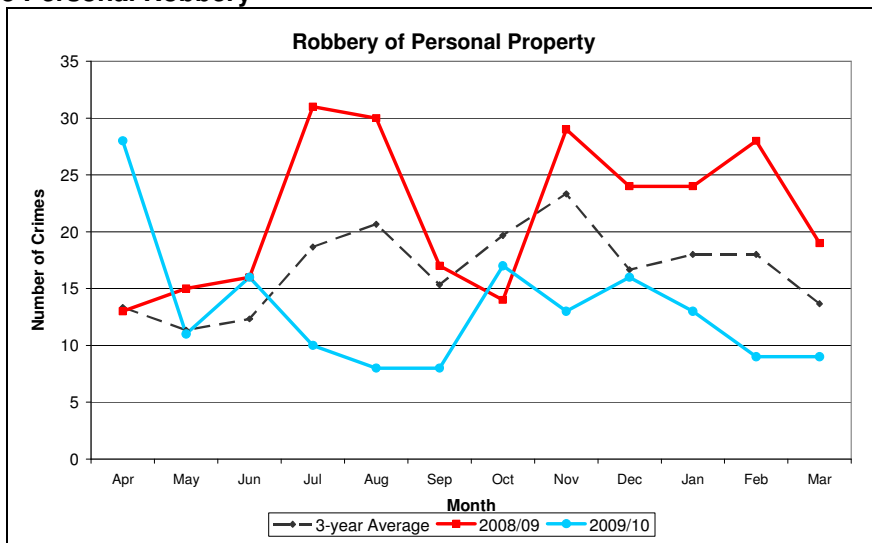
Personal Robbery

Recorded offences for Personal Robbery during 2009-10 are 39.2% lower (158 offences to end Mar 10) than at the same time the previous year 2008-09 (260).

The chart indicates that (apart from Apr-09 and Oct-09) the number of recorded offences during 2009-10 has been lower during most months when compared to the previous year.

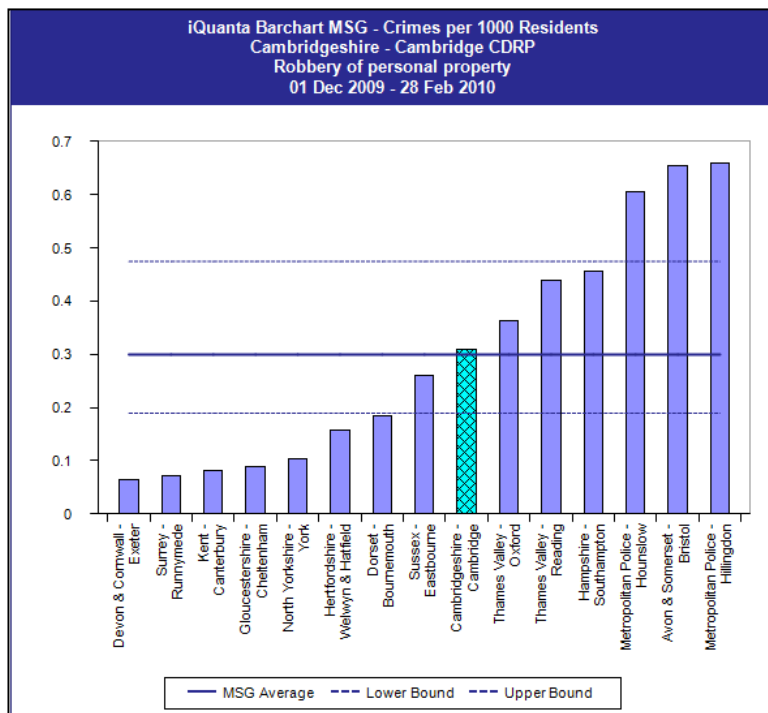
The requirement to reduce personal robbery by 10% from the 2008-09 baseline (260 recorded crimes) is being achieved.

Figure 3.5 Personal Robbery



Cambridge City remains in 9th position and Average in comparison to its most similar group members over the past three months.

Figure 3.6 Personal robbery – Position compared to most similar CDRPs



SECTION FOUR: DOMESTIC VIOLENCE

Multi-Agency Risk Assessment Conference (MARAC)

Cambridgeshire	FY 2008-09	FY 2009-10
Number of MARAC cases (Cambridgeshire)	271	399
NI 32 – Rate of repeat victimisation of MARAC cases	26%	27.5%

The target for NI 32 is that the repeat rate should not be higher than 28%. The county target has therefore been achieved in 2009-10. 2008-09 was the baseline-setting year for the National Indicator (NI) 32 and so data is not available prior to April 2008.

Independent Domestic Violence Advocacy Service (IDVAS)

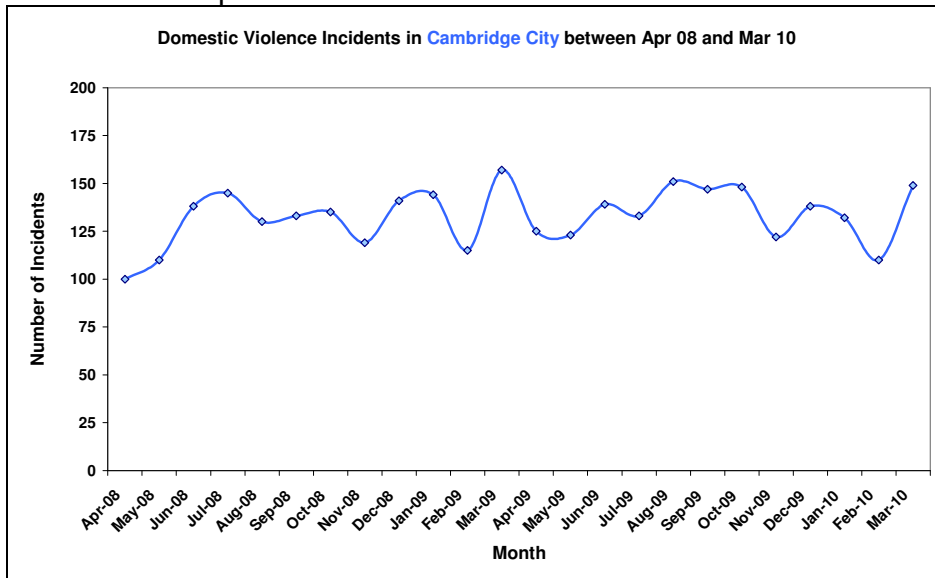
IDVAS works with high-risk cases across the county referred from Cambridgeshire Constabulary. The table below breaks down caseload by district for each quarter.

CDRP	2009-10 Q1	2009-10 Q2	2009-10 Q3	2009-10 Q4	Total 2009/10
Cambridge City	68	86	80	58	292
East Cambridgeshire	35	30	26	21	112
Fenland	58	50	54	50	212
Huntingdonshire	59	51	52	71	233
South Cambridgeshire	34	30	31	41	136
Cambridgeshire	254	247	243	241	985

During Q4 2009-10 Cambridge City CDRP accounted for 24% of the referrals to the IDVAS and 30% of referrals for the entire year 2009-10. The Domestic Abuse Partnership Coordinator reports that referrals for 2009-10 are down to 985 from 1,536 during the previous year on account of a change in system from reporting all referrals to only those adopted as caseload.

Police Incident data

The chart below shows the number of domestic abuse incidents per month within the district up to March 2010. These are ‘all incidents which have been closed as Domestic Incidents, either verbal or violent, where parties are over the age of 18. This measure is compliant with the ACPO definition of Domestic Abuse’.



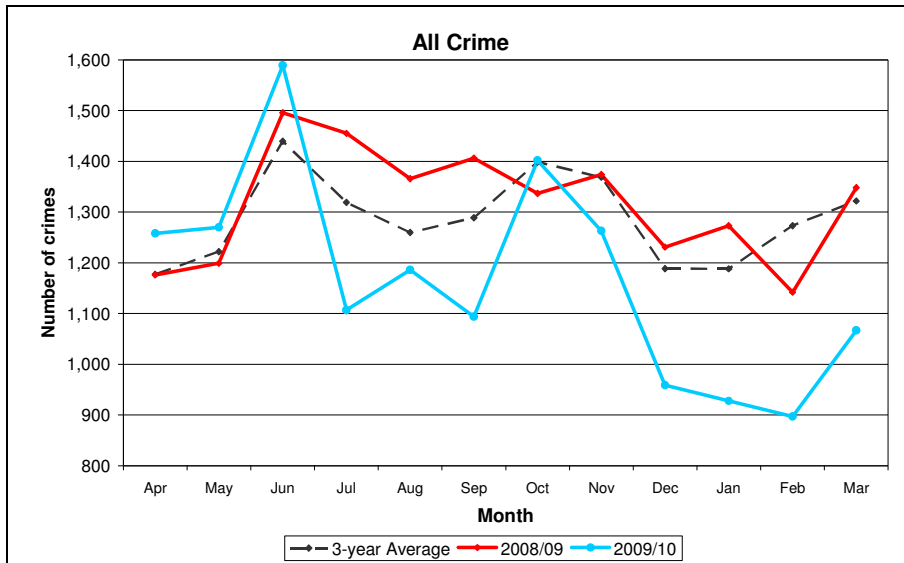
The number of Domestic Violence incidents reported to the police during 2008-09 and 2009-10 were 1,567 and 1,617 respectively indicating an increase in reporting of 3.2% by March 2010.

SECTION FIVE: REDUCING RE-OFFENDING

All criminal offences recorded during 2009-10 are 11.3% lower (14,020 offences to end Mar 10) than at the same time the previous year 2008-09 (15,803).

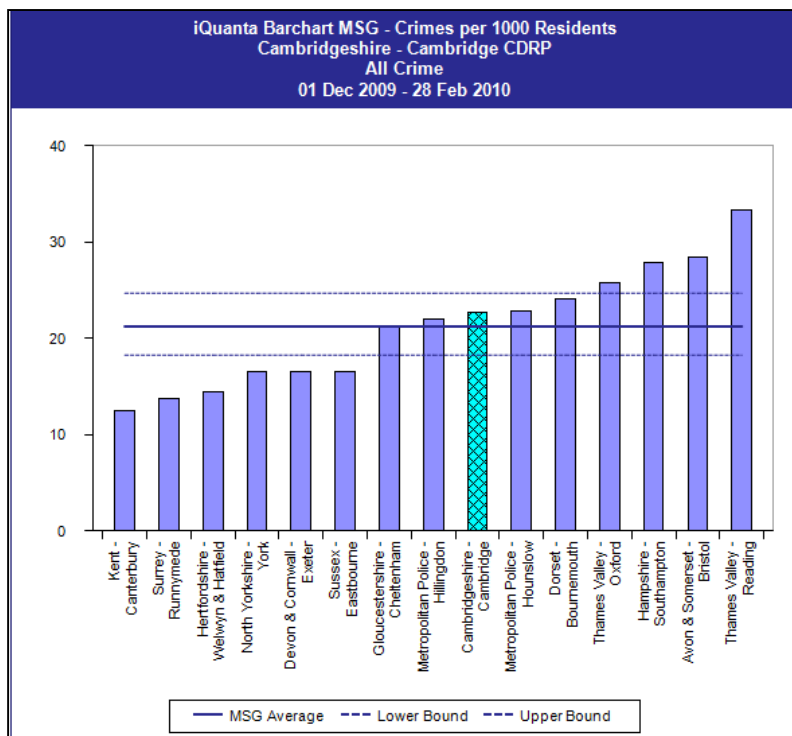
The chart indicates that the number of recorded offences during 2009-10 has significantly reduced; there have been just two periods exhibiting peaks in recorded offences during Apr-Jun 09 and Oct-09. Although no quantitative measures have been set in place for measuring All Crime, reductions during the last quarter, as seen in the chart, are clearly positive.

Figure 5.1 Total Crime



Cambridge City has significantly improved from 12th to 9th position and Average in comparison to its most similar group members for the past three months to end Feb-10.

Figure 5.2 Total Crime – Position compared to most similar CDRPs

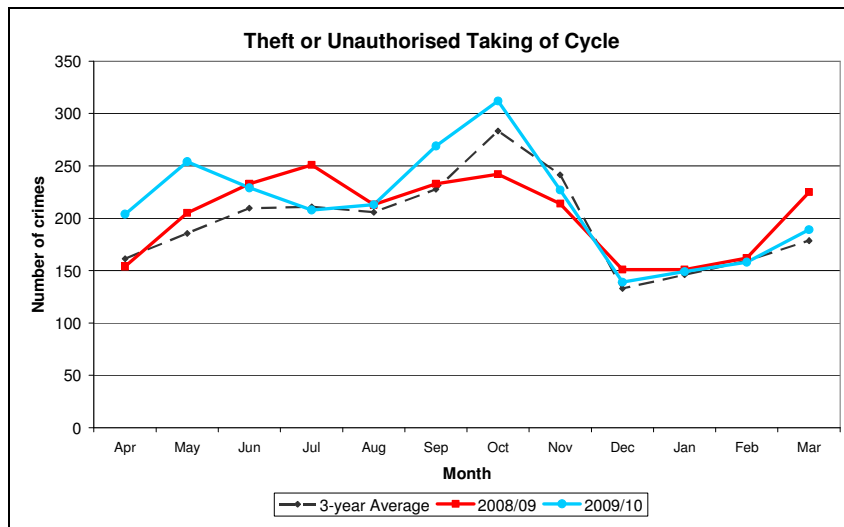


SECTION SIX: CYCLE CRIME

Recorded offences for Theft or Unauthorised Taking of a Pedal Cycle during 2009-10 are 4.8% higher (2,551 offences to end Mar 10) than at the same time the previous year 2008-09 (2,434).

The chart indicates a clear seasonal trend in thefts peaking each year in October, at the start of the year between Apr and Jun and also at the close of the year between Jan and Mar. The CDRP priority to reduce numbers of thefts is not being achieved.

Figure 6.1 Cycle Theft



Cambridge City remains firmly in 15th and last position and clearly worse than average in comparison to its most similar group members during the past three months.

Figure 6.2 Theft or Unauthorised Taking of a Cycle – Position compared to most similar CDRPs

