

Cambridge City Community Safety Partnership

Performance Report

Q2 2009/10

AUTHOR:	Cambridgeshire County Council
CONTACT NO:	01223 715310
DATE:	October 2009
PRODUCED FOR:	Cambridge City Community Safety Partnership

Cambridge City Community Safety Partnership Performance Summary

Priorities¹

1. Alcohol Related Violent Crime

- To reduce 'assault with less serious injury' by March 2010 from the baseline of 2008/2009 (885 recorded crimes)
- To reduce the number of Emergency Department attendances coded as 'assault' by March 2010 from the baseline established in 2008/2009 using Addenbrooke's Emergency Department
- To reduce the number of Ambulance call outs for 'assault' by March 2010 from the baseline established in 2008/2009

Direction of Travel



No Data

2. Anti-Social Behaviour

- To reduce 'criminal damage' by March 2010 from the baseline of 2008/2009 (2,103 recorded crimes)



3. Serious Acquisitive Crime

- To reduce the number of 'serious acquisitive crimes' reported to the police (by concentrating on tackling dwelling burglary) by 3.5% by March 2011 from the baseline of 2007/2008 (2,245 recorded crimes). Ongoing 3-year target.²



Burglary of Homes

- To reduce 'dwelling burglaries' by 10% by March 2011 from the baseline of 2007/8 (757 recorded crimes). Ongoing 3-year target.



Personal Robbery

- To reduce 'personal robberies' by March 2010 from the baseline of 2008/2009 (260 recorded crimes)



4. Domestic Violence

- To increase the number of domestic violence incidents reported to the police by March 2010 from the baseline of 2008/2009.
- To have a repeat domestic violence incident rate of no more than 28% using the Multi Agency Risk Assessment Conference (MARAC) service as the measure.²



5. Reducing Re-Offending

No quantitative measures are available quarterly

6. Cycle Crime

- Reduce the number of thefts of cycles



Key		Number of offences has not changed	
Number of offences has decreased		Number of offences has increased	

¹ Based upon content of 2008-11 Rolling-plan

² LAA countywide target

Areas of Concern

Cycle Crime

The current quarter shows higher levels than the same period in the previous year and the previous quarter. Further, there is a likelihood of recording higher levels during the summer and October due to the seasonal nature of this crime.

Alcohol related violent crime

Whilst this quarter is lower than the same period last year, it should be noted that the indicator relating to attendance at A&E for assault has shown a recent increase.

Data requirements

The Ambulance Trust is not currently sharing the call out data with the Research Group, Cambridgeshire County Council or Cambridgeshire Constabulary. This data is specified in the partnership guidance and appendix J of the partnership Information Sharing Agreement. Another request is being put through the PCT for the data, but the PCT do not hold the data at this time.

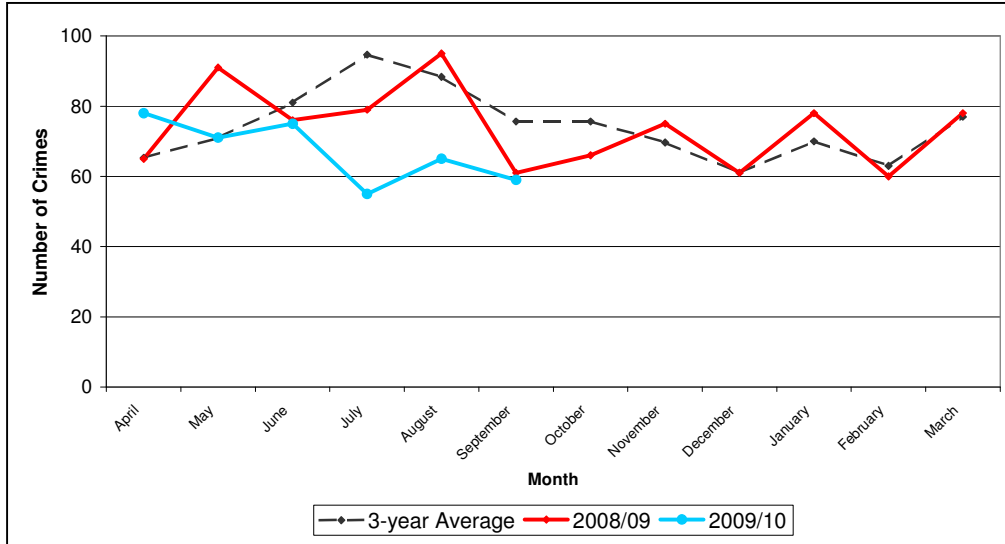
The Research Group has not been provided with a recent update on the progress on this.

SECTION ONE: ALCOHOL RELATED VIOLENT CRIME

Assault with less serious injury

This is not a perfect indicator of alcohol-related violent crime. However, because such a large proportion of violent crimes involve alcohol, movements in this indicator are likely to reflect successes in tackling alcohol related violence.

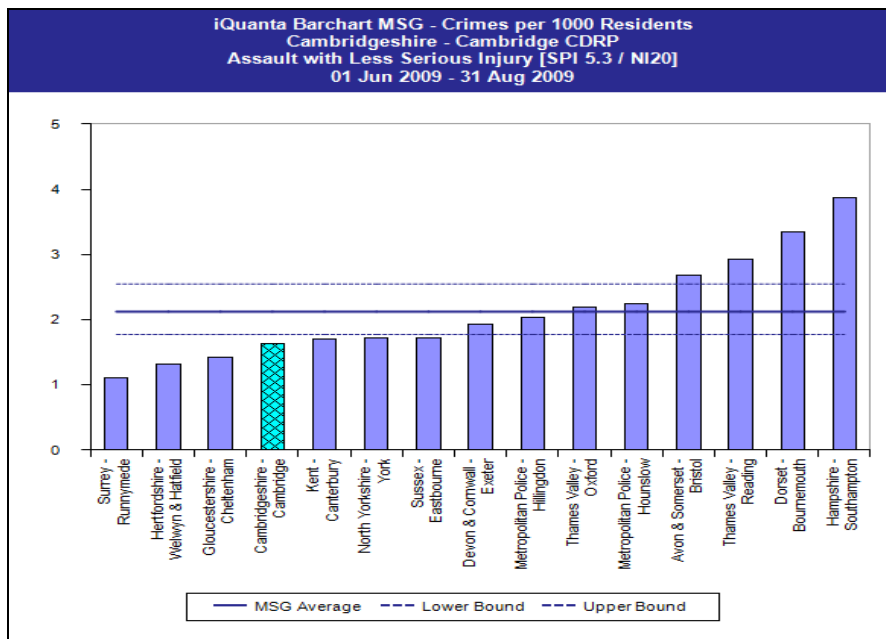
Graph 1.1: Assault with less serious injury - Trend



So far this year the cumulative total for Assault with Less Serious Injury indicates 403 offences compared to 467 at the same point in time the previous year demonstrating a 14% reduction in the recording of these crimes. Monthly totals are presently well below the three-year average for the fourth consecutive month.

Graph 1.2 – Most similar CDRPs³

The bar chart shows that for the period Jun-Aug 09 the partnership was in position 4 out of 15 similar partnership areas and better than the group average.



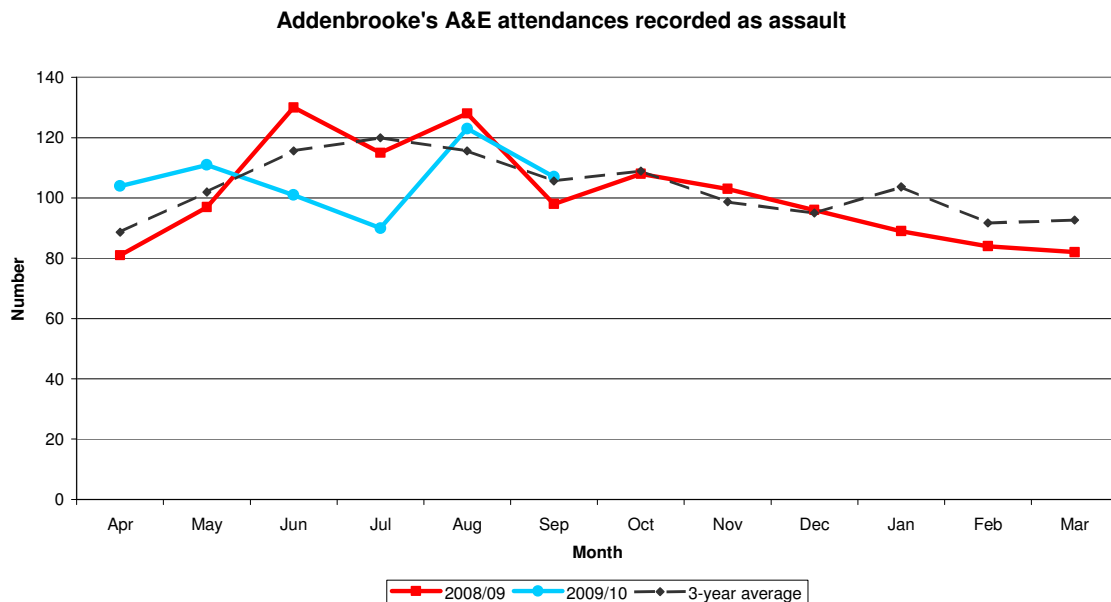
³ iQuanta is updated monthly approximately 24th of each month. Therefore for this quarters report the most recent data available on iQuanta is the period ending Aug 2009.

Addenbrooke's NHS Trust - A&E Data

The partnership needs to be aware that the data is not collected for performance purposes. The method of data collection is as follows; A receptionist collects the data by asking the patient the details of the incident and then enters the data electronically. Limitations of the data include that the submission of information is voluntary, therefore not all patients will choose to answer and it will not possible for those patients too traumatised or inebriated to answer.

Further the data will include some cases that have been reported to the police and therefore will appear in the police figures as well. We currently do not know to what extent the data overlaps.

The chart below shows the number of attendances recorded as assault seen at Addenbrooke's A&E department by month for the current year and the previous year. The dotted black line shows the average monthly attendance for three years (Apr06-Mar09)



The data for this year shows the following:

- The first two months of the financial year were higher than last year and the 3-year average.
- The early part of this summer showed a lower number of attendances than the previous year and the 3-year average.
- The two most recent months (Aug to Sept) have recorded an increase in attendances for assault. The number for August 08 was slightly higher than this year.

SECTION TWO – ANTI-SOCIAL BEHAVIOUR

Perceptions of ASB

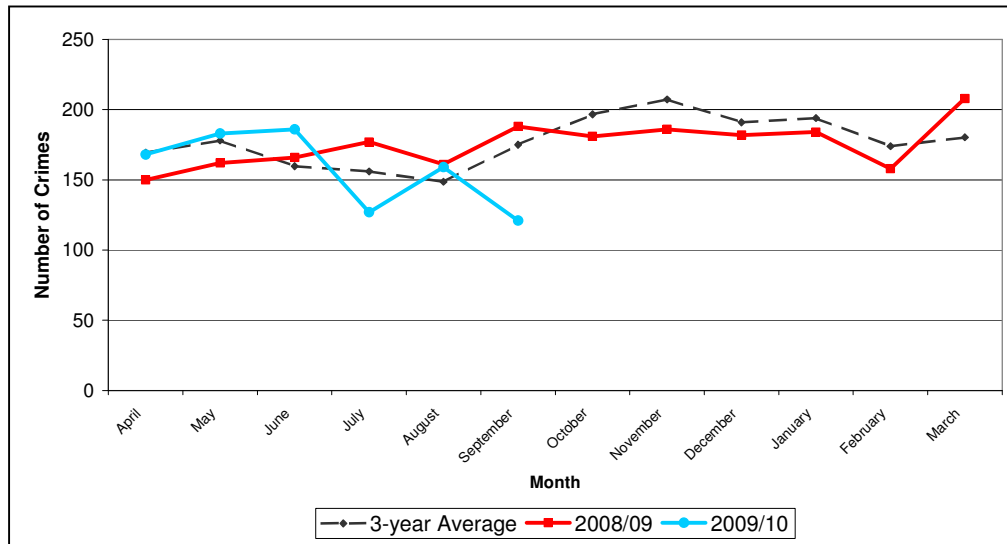
The following table presents the survey results; as can be seen overall ASB recorded a lower level of concern. However nearly a third of respondents perceived drunk or rowdy behaviour to be a problem.

	2006 Quality of Life Survey	2008 Place Survey ⁴
Percentage of people that consider ASB to be a concern (NI 17)	22%	15.2%
Percentage of people who perceive drunk or rowdy behaviour to be a problem in local area	25%	31.4%

Criminal Damage – monitored as the crime most closely related to ASB

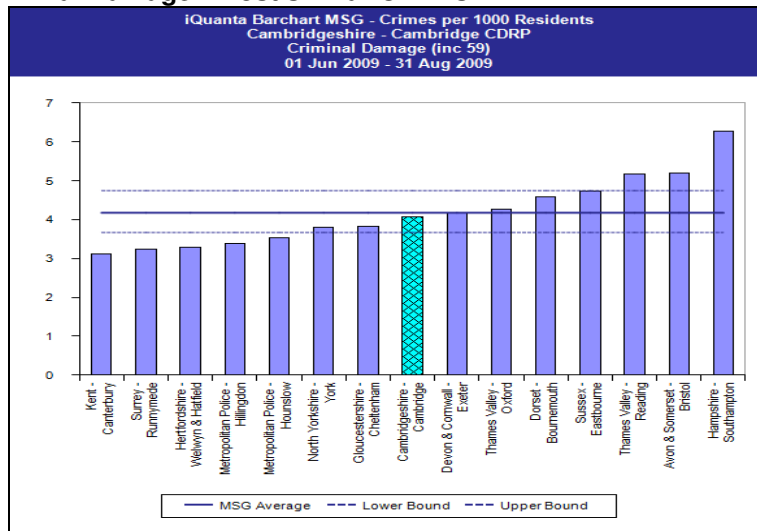
Cumulative Criminal damage recorded so far in the year to date (944) is 6% lower when compared with the same point in time in the previous year (1,004 offences). There have been significant reductions in offences recorded in July and September.

Graph 1.2: Criminal Damage – Trend



Cambridge City partnership is in position 8 and average in its most similar group (end Aug 09).

Graph 2.2: Criminal Damage - Most similar CDRPs



⁴ Note these figures are from the most recent release and there has been slight alterations

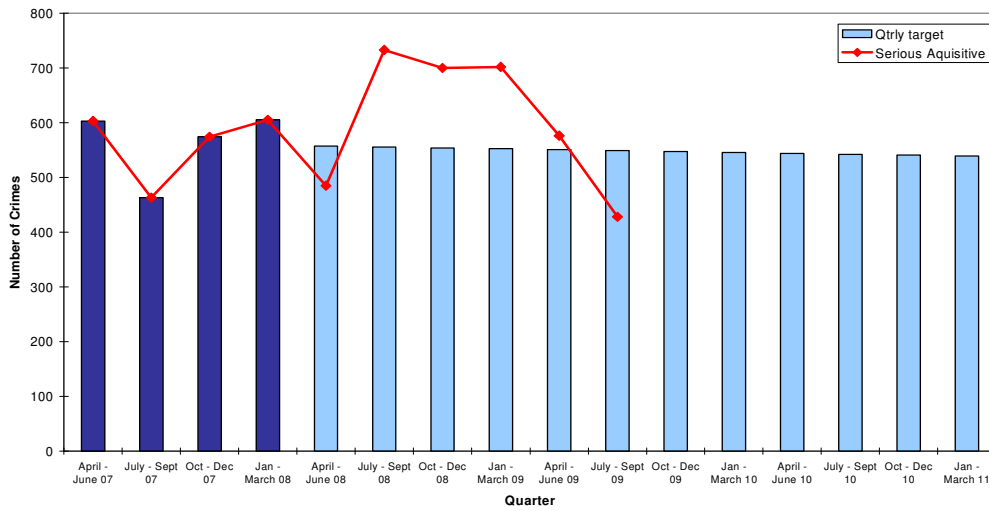
SECTION THREE: SERIOUS ACQUISITIVE CRIME

Within serious acquisitive crime, since the previous quarter there have been the following trends:

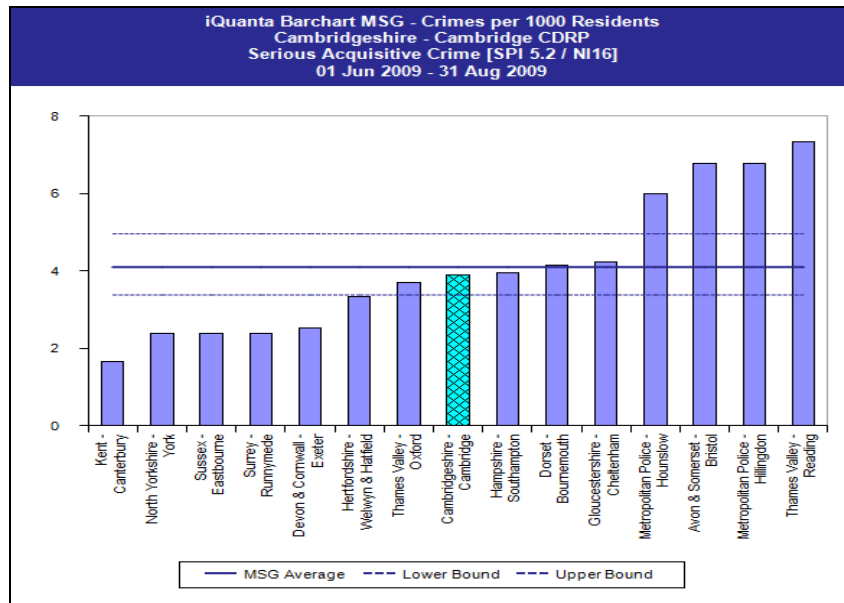
- A decrease in dwelling burglary of 26% (from 216 to 163 offences)
- A decrease in personal robbery of 53% (from 55 to 26 offences)
- An increase in business robbery of 200% (from 2 to 6 offences)
- A decrease in theft from vehicles of 20% (from 243 to 195 offences)
- A decrease in theft of vehicles of 37% (from 60 to 38 offences)

The overall impact of these trends has been a decrease of 26% (148 crimes) in serious acquisitive crime since the previous quarter. The recent decreases have put the partnership on target for this quarter.

Graph 3.1: Serious Acquisitive Crime - Progress against target



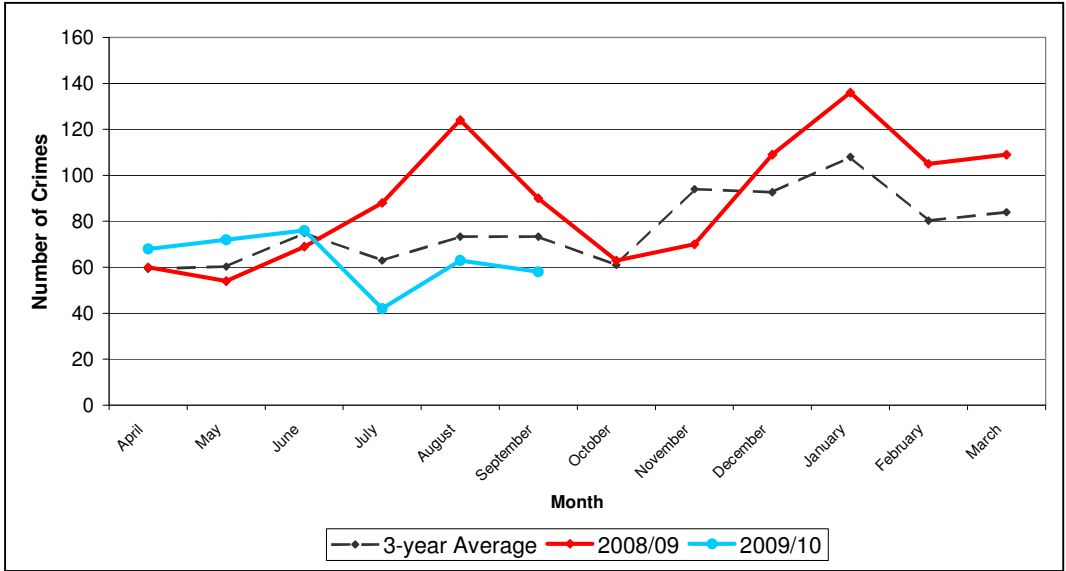
Graph 3.2: Serious Acquisitive Crime - Most similar CDRPs



Burglary of Homes

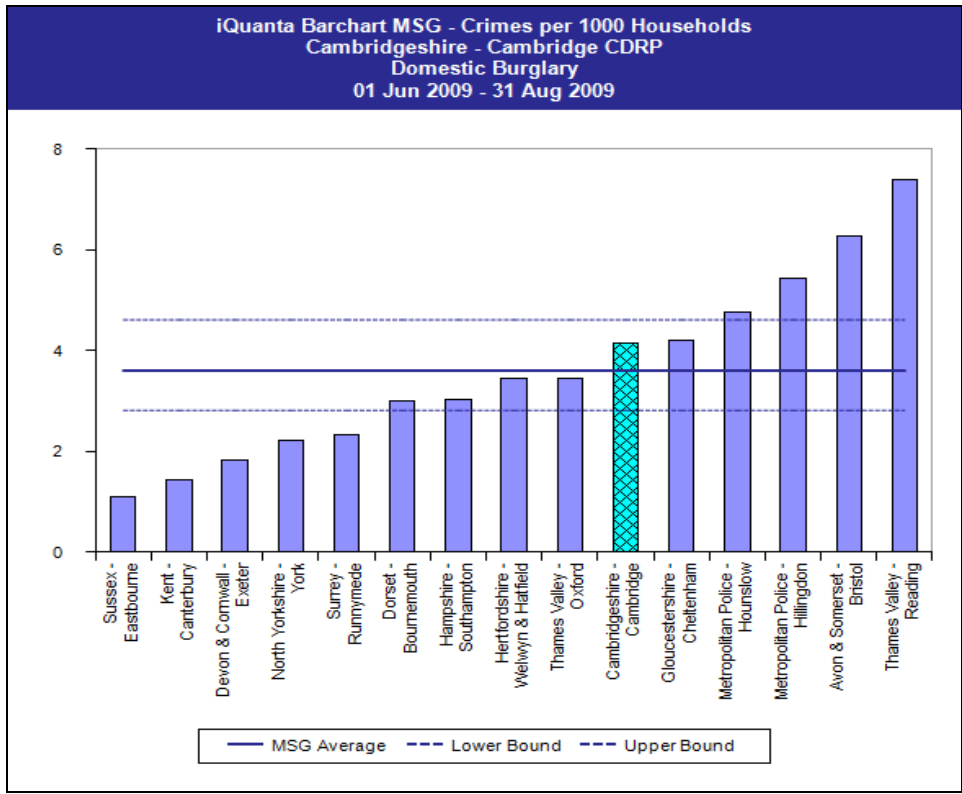
The cumulative number of Domestic Burglaries recorded so far this year (379) is 22% lower than at the same point in time the previous year (485 offences). Although there was an increase in recorded offences in August 2008, the peak recorded at the same time the previous year was not repeated.

Graph 3.3: Burglary of homes - Trend



Cambridge City is worse than average and in position 10 when compared to its peers for Domestic Burglary (to end Aug 09).

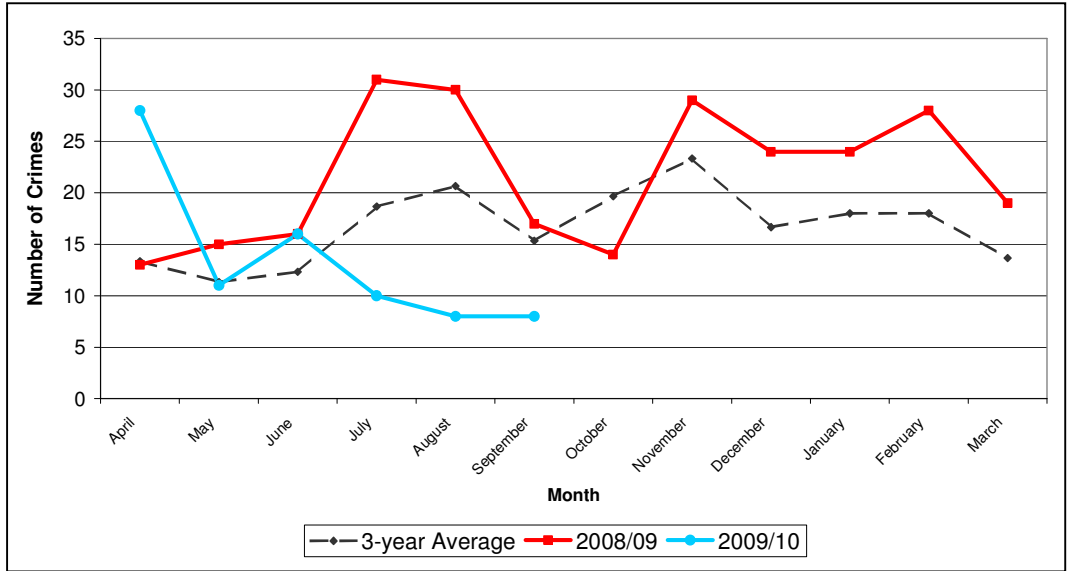
Graph 3.4: Burglary of homes - Most similar CDRPs



Personal Robbery

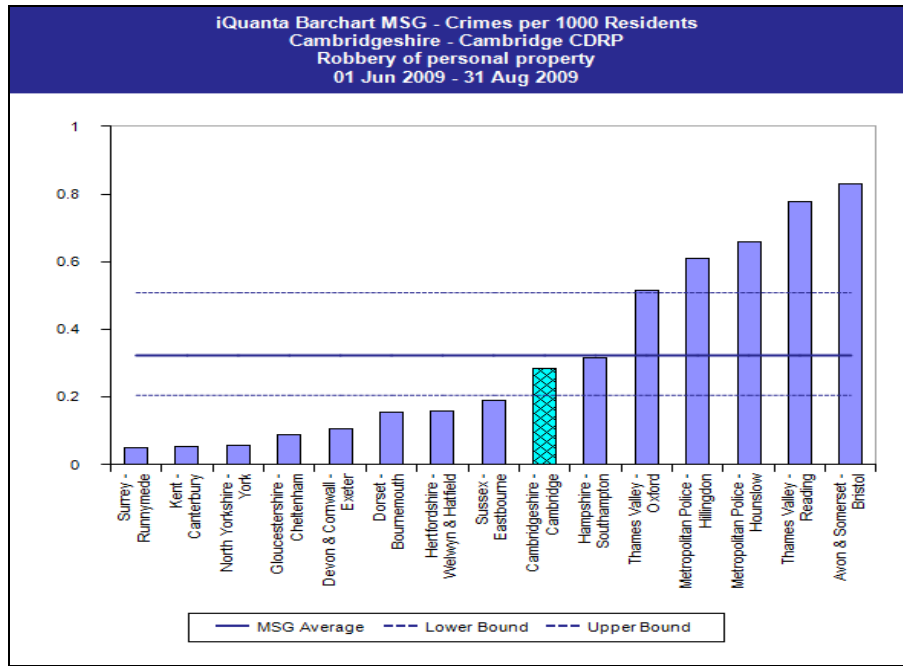
There are usually few Personal Robberies recorded each month. From a high of 28 offences recorded in Apr 09, cumulative offences recorded so far this year (81) are a third lower, and now well within 3-year average, than at the same time the previous year (122 offences).

Graph 3.5 Personal robbery - Trend



The CSP is in position 9 and better than average position when compared to its most similar group (end Aug 09).

Graph 3.6 Personal robbery - Most Similar CDRPs



SECTION FOUR: DOMESTIC VIOLENCE

Multi-Agency Risk Assessment Conference (MARAC)

Cambridgeshire	FY 2008/09	Rolling Year ending Sept 09
Number of MARAC cases	271	301
NI 32 – Rate of repeat victimisation of MARAC cases	26%	25.5%

2008/09 was the baseline setting year for the National Indicator (NI) 32, therefore data is not available prior to April 2008. The target for NI 32 is that the repeat rate should not be higher than 28%. Therefore the county is currently on target.

Independent Domestic Violence Advocacy Service (IDVAS)

The IDVAS work with high-risk cases across the county referred from Cambridgeshire Constabulary. The table below breaks down caseload by district for each quarter.

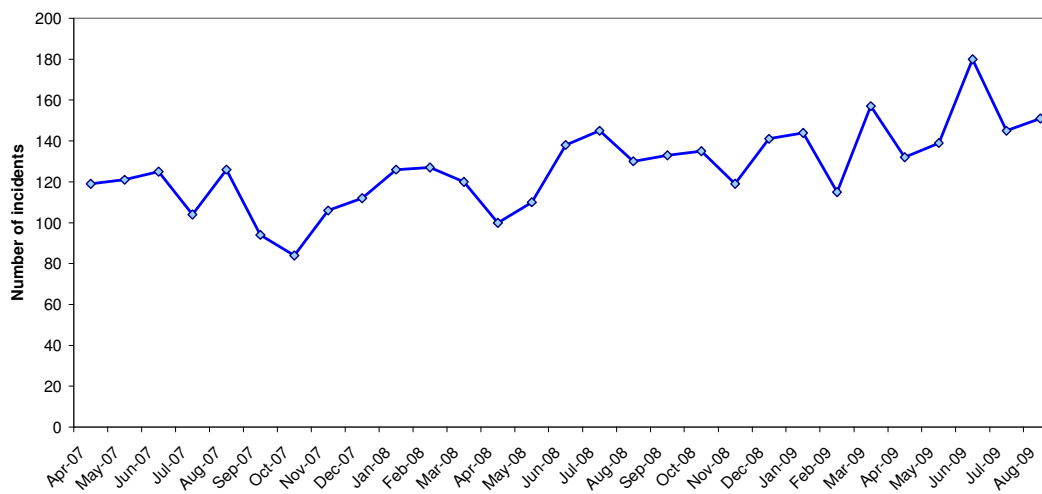
CDRP	2009/10 Q1	2009/10 Q2	2009/10 Q3	2009/10 Q4
Cambridge City	109	107		
East Cambridgeshire	46	35		
Fenland	83	62		
Huntingdonshire	82	64		
South Cambridgeshire	46	45		
<i>Cambridgeshire</i>	<i>366</i>	<i>313</i>		

During this quarter Cambridge CSP accounted for nearly 34% of the referrals to the IDVAS.

Police Incident data

The chart below shows the number of domestic abuse incidents per month within the city up to August 2009. The last 12 months have seen an overall upward trend. An overall increase was seen across the county. Comparing Apr-Sept 09 with the same period in the previous year shows a 17% reduction in reporting.

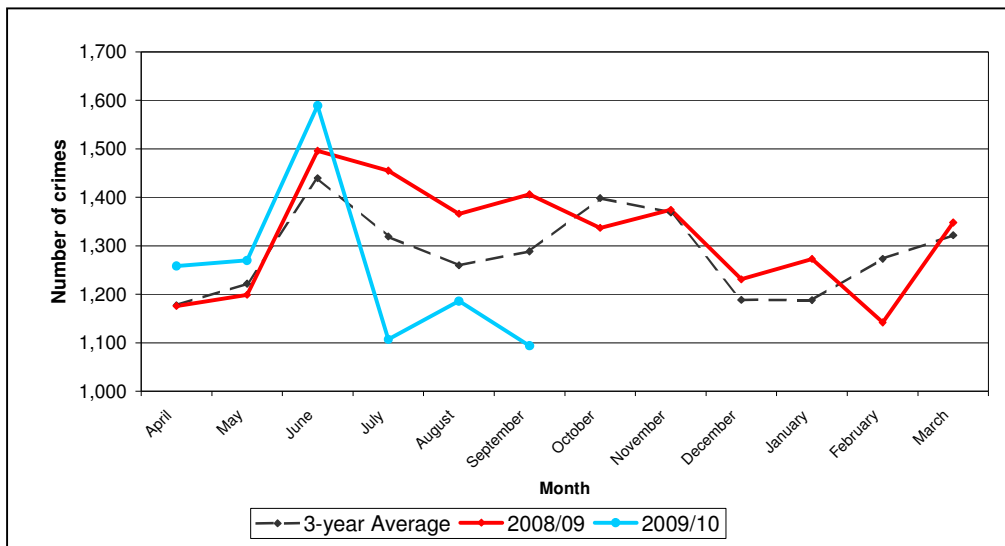
Domestic Violence Incidents in Cambridge City between Apr 07 and Aug 09



SECTION FIVE: REDUCING RE-OFFENDING

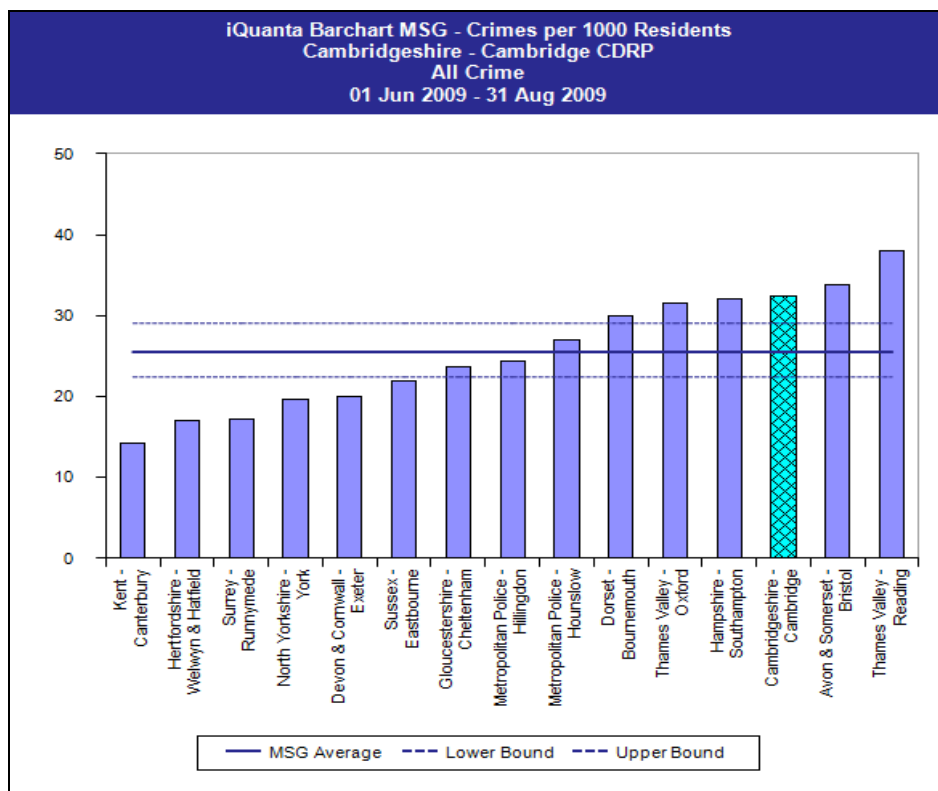
Cumulative total crime recorded so far this year is 7% lower (7,504) when compared with the previous year (8,098 offences). Note the spike in recorded offences in June this year, previous year and also apparent in the 3-year average for total recorded crime. Since Jun09 total recorded crime has reduced considerably to well below the 3-year average.

Graph 5.1 Total Crime - Trend



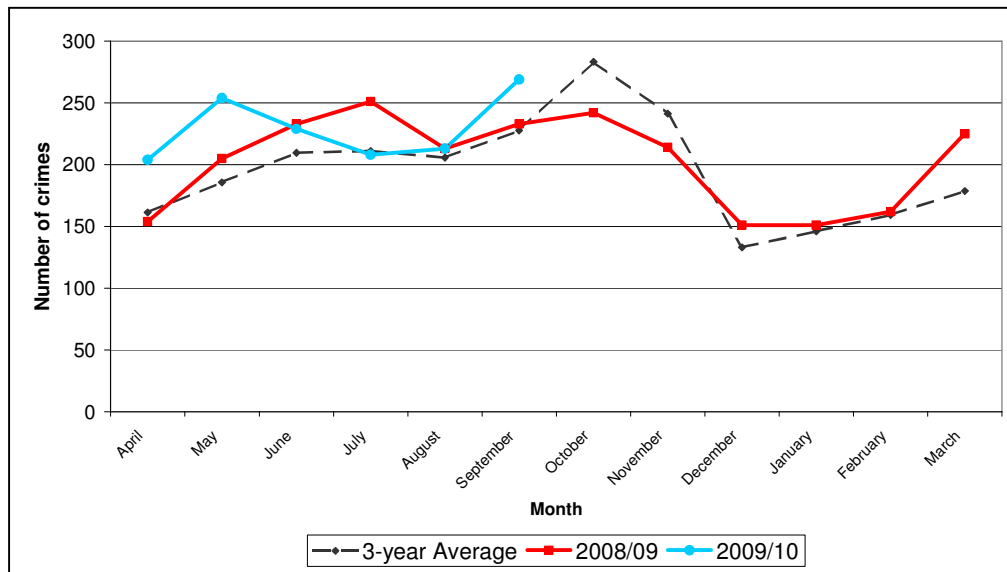
The partnership is ranked in position 13 and worse than average when compared to 15 most similar partnerships {three months to end Aug 09}.

Graph 5.2 Total Crime - Most Similar CDRPs



SECTION SIX: CYCLE CRIME

Graph 6.1 Cycle Theft – Trend



Cumulative cycle theft recorded so far this year (1,377) is 7% higher than at the same point the previous year (1,289 offences). It is also higher than the 3-year average.