

# Cambridge City Community Safety Partnership

## Performance Report

Q1 2009/10

<b>AUTHOR:</b>	Cambridgeshire County Council
<b>CONTACT NO:</b>	01223 715310
<b>DATE:</b>	July 2009
<b>PRODUCED FOR:</b>	Cambridge City Community Safety Partnership

# Cambridge City Community Safety Partnership Performance Summary

## Priorities<sup>1</sup>

### 1. Alcohol Related Violent Crime

- To reduce 'assault with less serious injury' by March 2010 from the baseline of 2008/2009 (885 recorded crimes)
- To reduce the number of Emergency Department attendances coded as 'assault' by March 2010 from the baseline established in 2008/2009 using Addenbrooke's Emergency Department
- To reduce the number of Ambulance call outs for 'assault' by March 2010 from the baseline established in 2008/2009

## Direction of Travel



Data unavailable  
this quarter

No Data

### 2. Anti-Social Behaviour

- To reduce 'criminal damage' by March 2010 from the baseline of 2008/2009 (2,103 recorded crimes)



### 3. Serious Acquisitive Crime

- To reduce the number of 'serious acquisitive crimes' reported to the police (by concentrating on tackling dwelling burglary) by 3.5% by March 2011 from the baseline of 2007/2008 (2,245 recorded crimes). Ongoing 3-year target.<sup>2</sup>



#### Burglary of Homes

- To reduce 'dwelling burglaries' by 10% by March 2011 from the baseline of 2007/8 (757 recorded crimes). Ongoing 3-year target.



#### Personal Robbery

- To reduce 'personal robberies' by March 2010 from the baseline of 2008/2009 (260 recorded crimes)



### 4. Domestic Violence

- To increase the number of domestic violence incidents reported to the police by March 2010 from the baseline of 2008/2009.
- To have a repeat domestic violence incident rate of no more than 28% using the Multi Agency Risk Assessment Conference (MARAC) service as the measure. Cambridge City, South and East Cambridgeshire target.

Data unavailable  
this quarter



No quantitative  
measures are  
available quarterly

### 5. Reducing Re-Offending

### 6. Cycle Crime

- Reduce the number of thefts of cycles



Key		Number of offences has not changed	
Number of offences has decreased		Number of offences has increased	

<sup>1</sup> Based upon content of 2008-11 Rolling-plan

<sup>2</sup> LAA target

## **Areas of Concern**

### ***Burglary of homes***

Burglary has been highlighted as an area for concern for the partnership for the previous two quarters. Whilst a drop since the previous quarter has been seen, the levels since April the showing increases. The partnership is still in a position worse than its peers.

### ***Serious Acquisitive Crime***

Whilst there has been a drop in the level of offences, the CSP is not currently on track to meet its target to reduce the number by 3.5% by March 2011.

### ***Cycle Crime***

The current quarter shows higher levels than the same period in the previous year and the previous quarter. Further, there is a likelihood of recording higher levels during the summer and October due to the seasonal nature of this crime.

### ***Alcohol related violent crime***

Whilst this quarter is lower than the same period last year, if the figures continue to increase the CSP is at risk to not meet the target.

### ***Criminal Damage***

Criminal damage has not shown signs of decreasing, with the figures for this quarter showing a continued rise. The CSP needs to reduce the level of criminal damage if it is to make the target to reduce the number of crimes lower than the previous year.

### ***Data requirements***

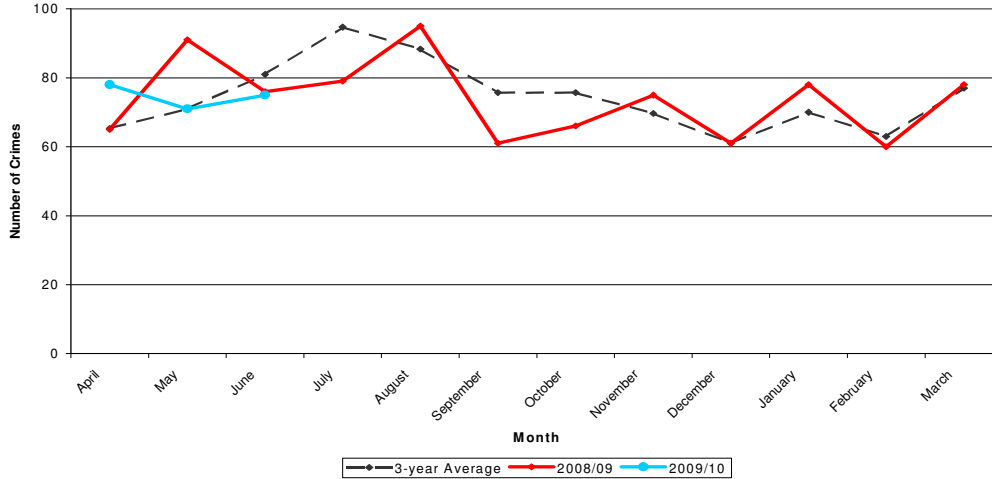
The Ambulance Trust is not currently sharing the call out data with the Research Group, Cambridgeshire County Council or Cambridgeshire Constabulary. This data is specified in the partnership guidance and appendix J of the partnership Information Sharing Agreement. Another request is being put through the PCT for the data, but the PCT do not hold the data at this time.

SECTION ONE: ALCOHOL RELATED VIOLENT CRIME

**Assault with less serious injury**

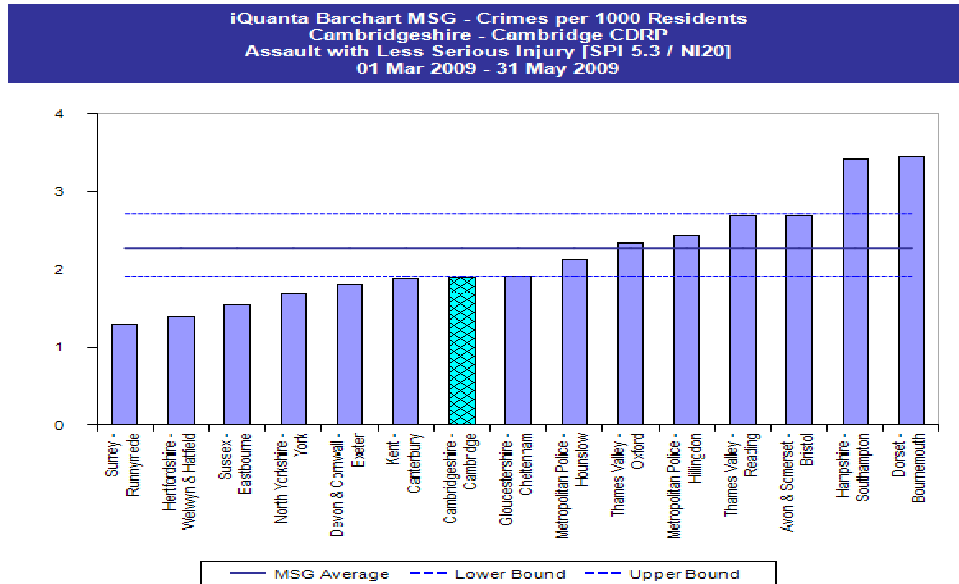
This is not a perfect indicator of alcohol-related violent crime. However, because such a large proportion of violent crimes involve alcohol, movements in this indicator are likely to reflect successes in tackling alcohol related violence.

**Graph 1.1: Assault with less serious injury - Trend**



The quarter as a whole was 4% lower than the same period last year. At the beginning of the quarter assault with a less serious injury was higher than both the same month last year and the 3-year average. However June recorded fewer crimes than either the previous year or the 3-year average. Compared with the previous quarter Cambridge City recorded a 4% increase (8 crimes).

**Graph 1.2 – Most similar CDRPs<sup>3</sup>**



The graph above shows that for the period March-May 09 the partnership was 7<sup>th</sup> best out of 15 similar partnership areas and lower than the group average.

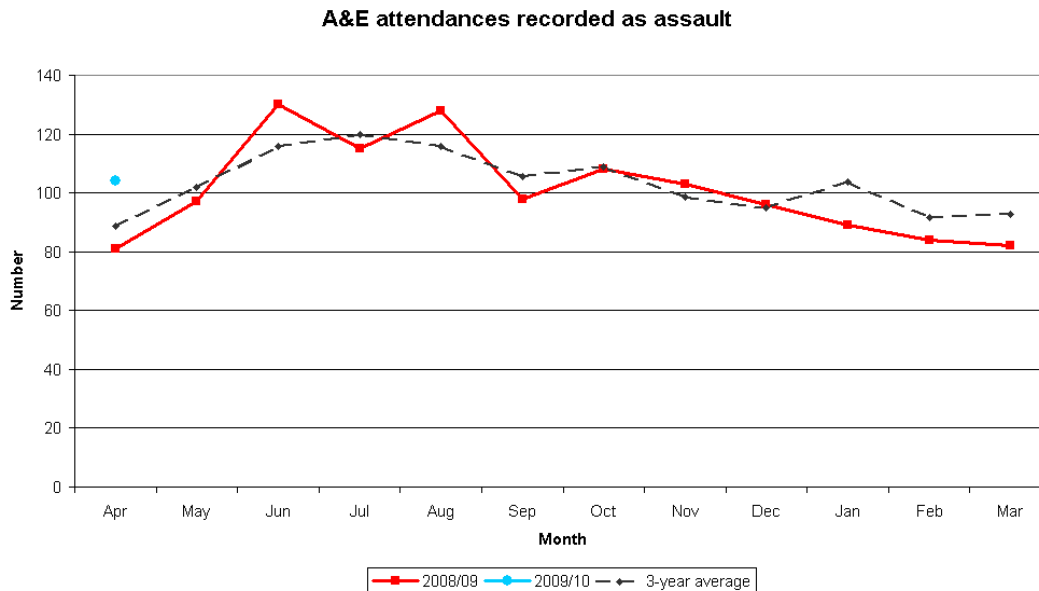
<sup>3</sup> iQuanta is updated monthly approximately 24<sup>th</sup> of each month. Therefore for this quarters report the most recent data available on iQuanta is the period ending May 2009.

## Addenbrooke's NHS Trust - A&E Data

The partnership needs to be aware that the data is not collected for performance purposes. The method of data collection is as follows; A receptionist collects the data by asking the patient the details of the incident and then enters the data electronically. Limitations of the data include that the submission of information is voluntary, therefore not all patients will choose to answer and it will not possible for those patients too traumatised or inebriated to answer.

Further the data will include some cases that have been reported to the police and therefore will appear in the police figures as well. We currently do not know to what extent the data overlaps.

The chart below shows the number of attendances recorded as assault seen at Addenbrooke's A&E department by month for the current year and the previous year. The dotted black line shows the average monthly attendance for three years (Apr06-Mar09)



Unfortunately the data for May and June 2009 was not available in time for this quarters report. It is expected that in future data will be shared on a monthly basis and therefore more readily available.

**SECTION TWO – ANTI-SOCIAL BEHAVIOUR**

**Perceptions of ASB**

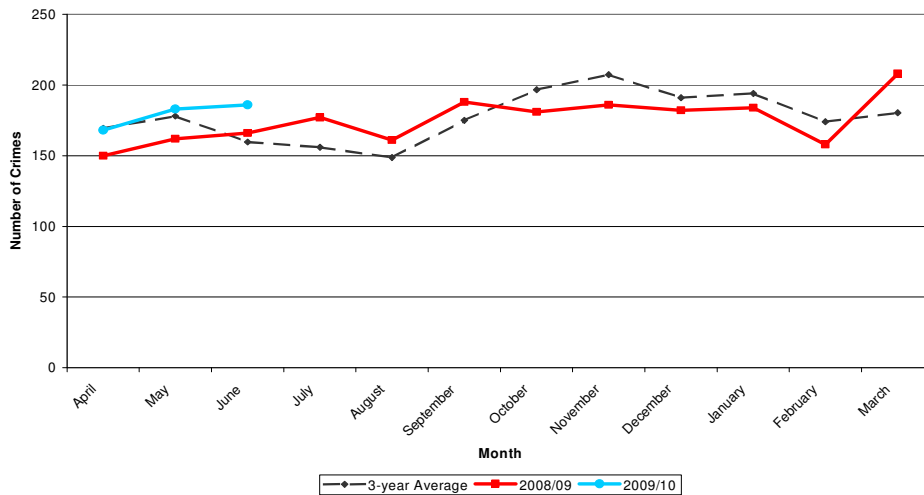
The following table presents the survey results, as can be seen overall ASB recorded a lower level of concern. However nearly a third of respondents perceived drunk or rowdy behaviour to be a problem.

	2006 Quality of Life Survey	2008 Place Survey <sup>4</sup>
Percentage of people that consider ASB to be a concern (NI 17)	22%	15.2%
Percentage of people who perceive drunk or rowdy behaviour to be a problem in local area	25%	31.4%

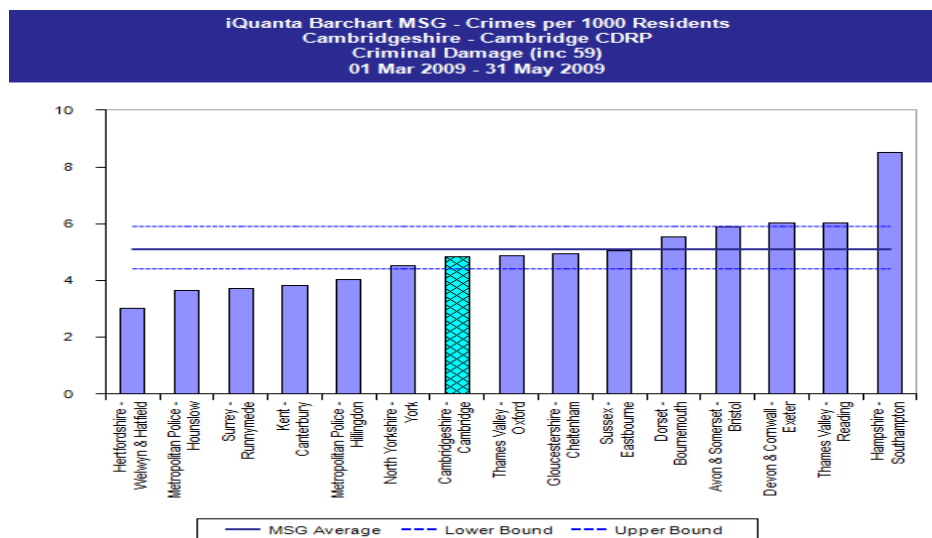
**Criminal Damage – monitored as the crime most closely related to ASB**

Criminal damage showed an increase (12%, 59 crimes) compared with the previous quarter. The chart also shows that this quarter is higher than the same period last year and the 3-year average. The second chart below shows that the partnership is in line with its most similar group.

**Graph 1.2: Criminal Damage - Trend**



**Graph 2.2: Criminal Damage - Most similar CDRPs**



<sup>4</sup> Note these figures are from the most recent release and there has been slight alterations

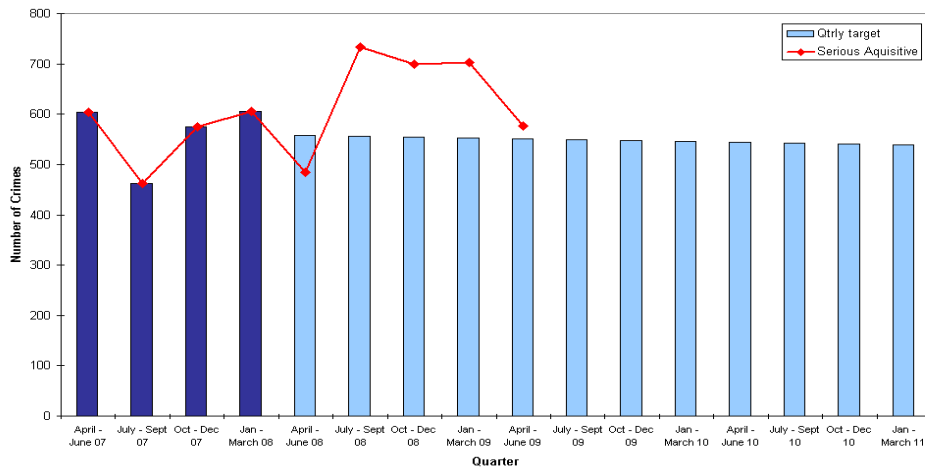
### SECTION THREE: SERIOUS ACQUISITIVE CRIME

Within serious acquisitive crime, since the previous quarter there have been the following trends:

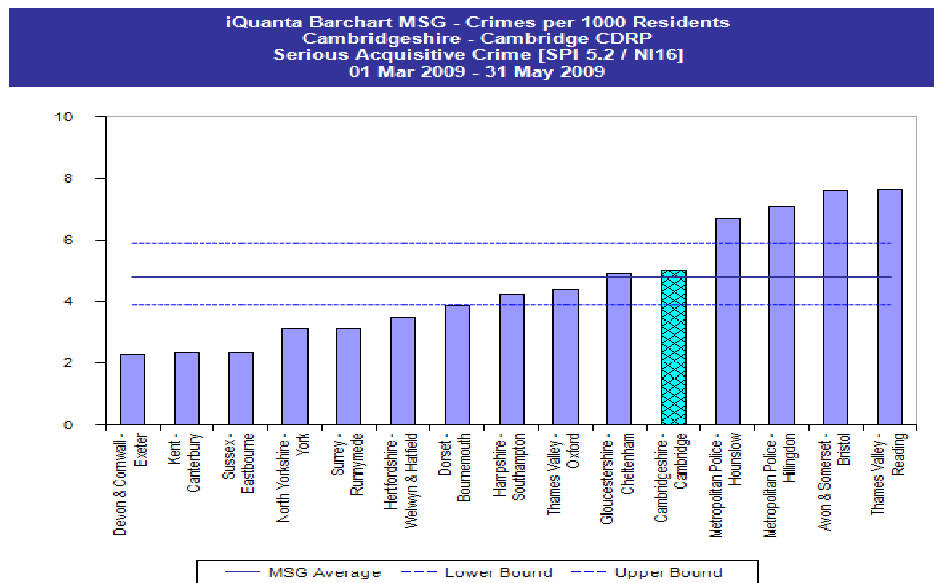
- A decrease in dwelling burglary of 38% (from 350 to 216 offences)
- A decrease in personal robbery of 22.5% (from 71 to 55 offences)
- No change in business robbery (2 crimes recorded each quarter)
- An increase in theft from vehicles of 3% (from 235 to 243 offences)
- An increase in theft of vehicles of 36% (from 44 to 60 offences)

The overall impact of these trends has been a decrease of 18% (126 crimes) in serious acquisitive crime since the previous quarter. The level is slightly higher than the same period last year.

**Graph 3.1: Serious Acquisitive Crime - Progress against target**



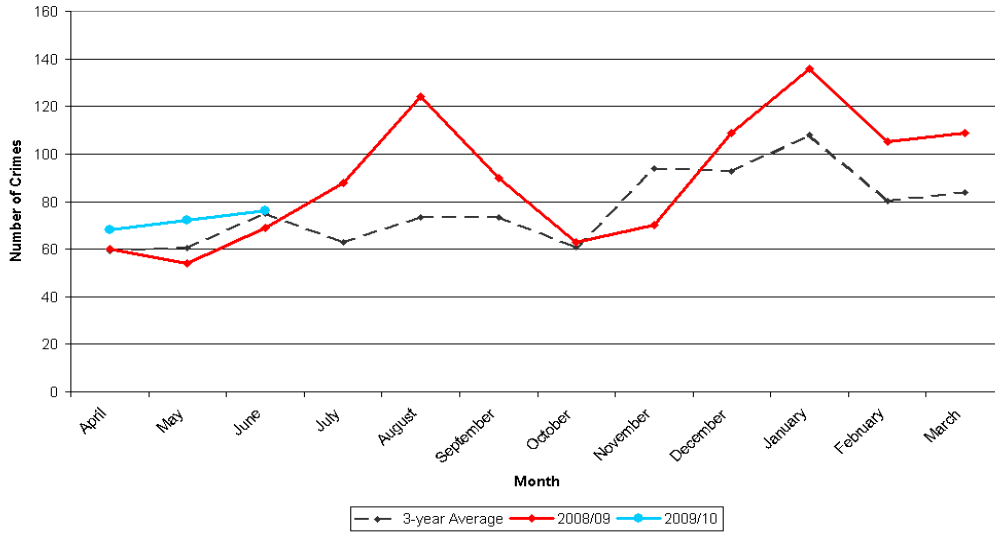
**Graph 3.2: Serious Acquisitive Crime - Most similar CDRPs**



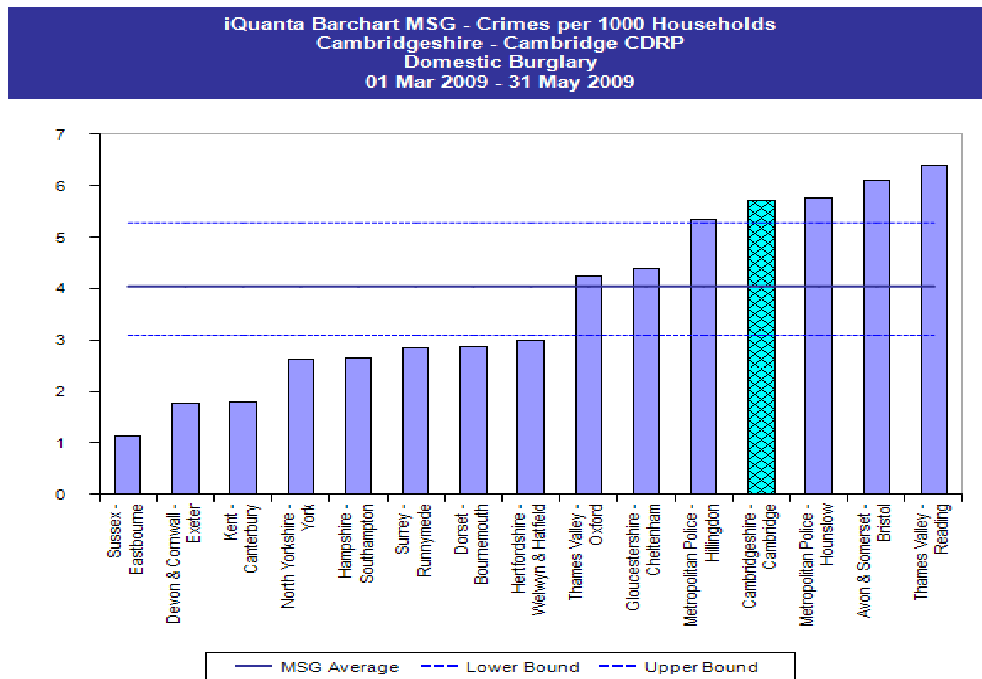
**Burglary of Homes**

Burglary of homes shows slight increases during this quarter and is higher than the same period last year (18% - 33 crimes) and the 3-year average. However there was a 38% (134 crimes) decrease compared to last quarter.

**Graph 3.3: Burglary of homes - Trend**



**Graph 3.4: Burglary of homes - Most similar CDRPs**

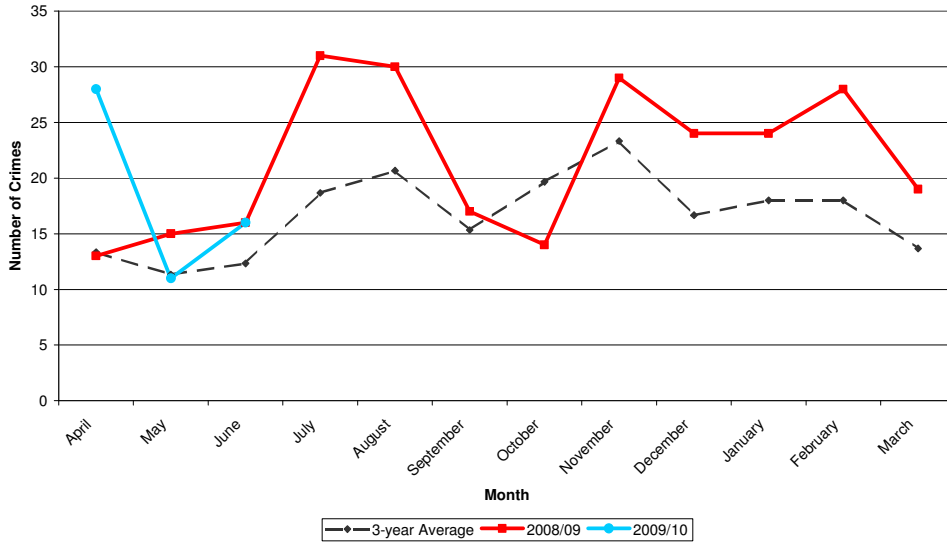


Cambridge City is above average compared to its peers and is in position 12 for dwelling burglary.

**Personal Robbery**

Personal robbery records very low numbers per month and therefore often shows fluctuations month to month. April 2009 did record a peak compared to April 2008 and the 3-year average for that month. Overall the quarter was 25% (11 crimes) higher than Apr-Jun 08. The CSP recorded a 22.5% drop (16 crimes) compared to the previous quarter.

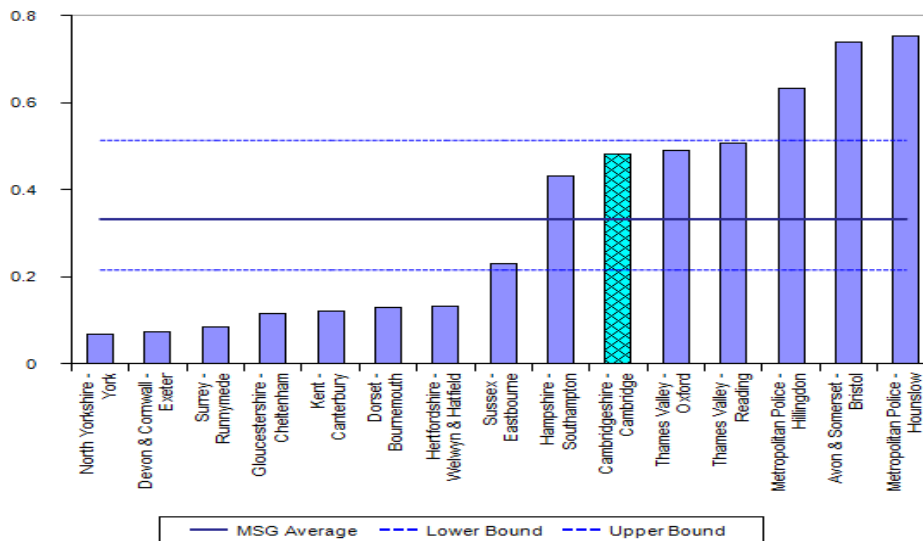
**Graph 3.5 Personal robbery - Trend**



The CSP is in position 10 compared to its most similar group and the rate is worse than the group average.

**Graph 3.6 Personal robbery - Most Similar CDRPs**

**iQuanta Barchart MSG - Crimes per 1000 Residents  
Cambridgeshire - Cambridge CDRP  
Robbery of personal property  
01 Mar 2009 - 31 May 2009**



## SECTION FIVE: DOMESTIC VIOLENCE

### Multi-Agency Risk Assessment Conference (MARAC)

Cambridgeshire	FY 2008/09	Rolling Year ending June 09
Number of MARAC cases	271	301
NI 32 – Rate of repeat victimisation of MARAC cases	26%	24.5%

2008/09 was the baseline setting year for the National Indicator (NI) 32, therefore data is not available prior to April 2008. The target for NI 32 is that the repeat rate should not be higher than 28%. Therefore the county is currently on target.

### Independent Domestic Violence Advocacy Service (IDVAS)

The IDVAS work with high-risk cases across the county referred from Cambridgeshire Constabulary. The table below breaks down caseload by district for each quarter.

CDRP	2009/10 Q1	2009/10 Q2	2009/10 Q3	2009/10 Q4
Cambridge City	109			
East Cambridgeshire	46			
Fenland	83			
Huntingdonshire	82			
South Cambridgeshire	46			
<i>Cambridgeshire</i>	<i>366</i>			

During this quarter Cambridge CSP accounted for nearly 30% of the referrals to the IDVAS.

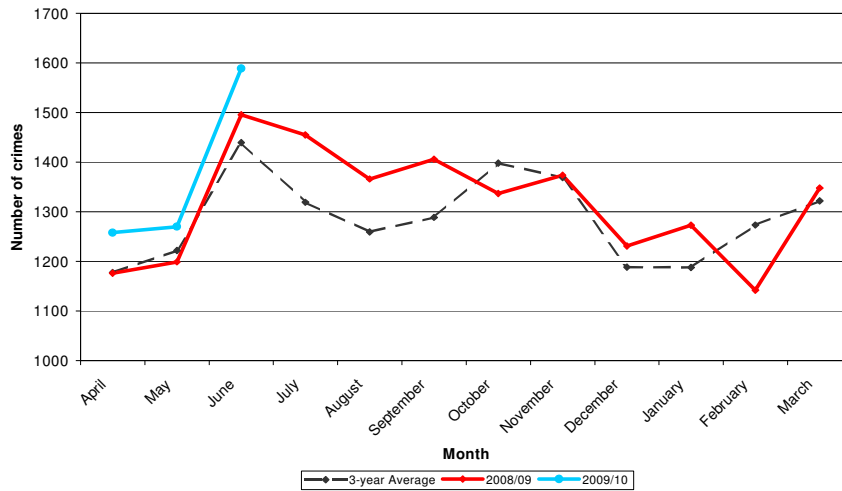
### Police Incident data

Due to a review in the Information Sharing Agreement, police recorded DV incident data is not currently available. The aim is to have resolved this by the end of July 2009.

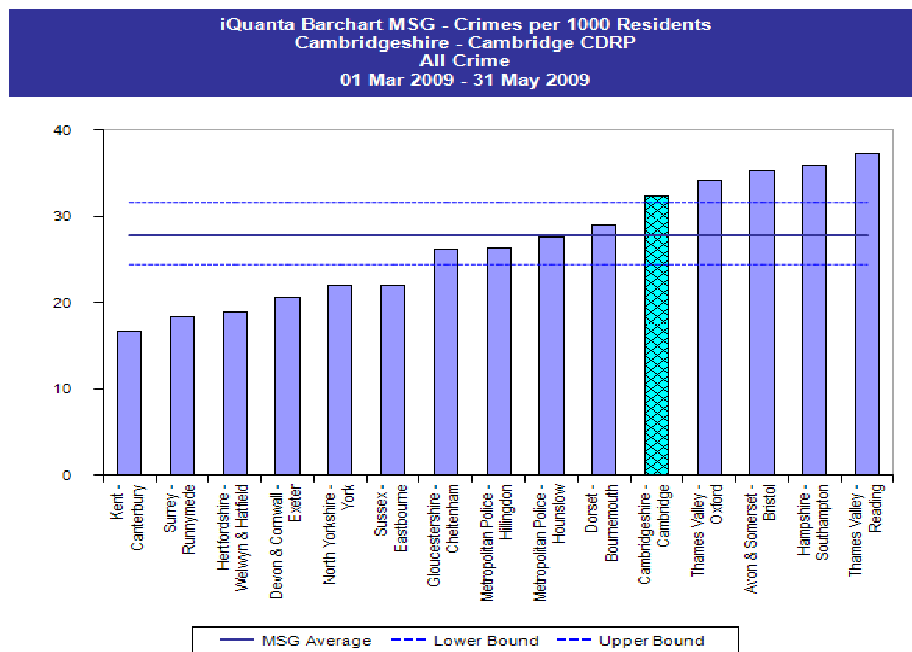
## SECTION FIVE: REDUCING RE-OFFENDING

Total crime increased compared with the previous quarter by 9% (354 crimes), and was 6% higher than the same period last year. The partnership is still ranked 11<sup>th</sup> out of the 15 most similar partnerships.

**Graph 5.1 Total Crime - Trend**

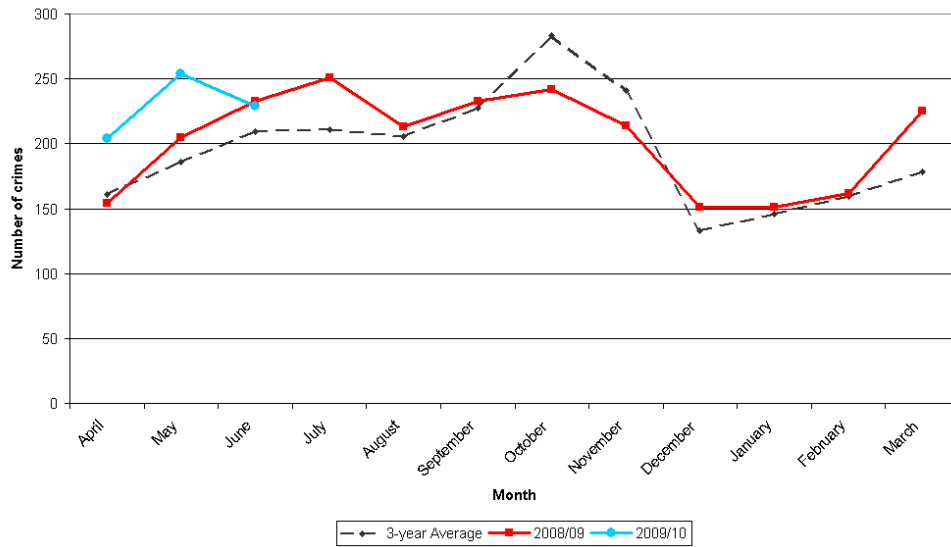


**Graph 5.2 Total Crime - Most Similar CDRPs**



## SECTION SIX: CYCLE CRIME

Graph 6.1 Cycle Crime – Trend



The level of cycle crime this quarter is higher than the same quarter in both the previous year (16% - 95 crimes) and the 3-year average. The CSP recorded an increase of 28% (149 crimes) comparing this quarter with the last quarter.