



NE1GHOUBRHOOD POLICING

Supporting local communities, targeting crime together

Cambridge City North Neighbourhood Profile Update

December 2007



Contents

1. Introduction
2. Executive summary
3. Previous issues identified and actions taken
4. Neighbourhood trends in crime and disorder
5. Trends in crime and disorder by ward
6. Recommendations
7. Appendix

1. Introduction

Aim

The aim of the neighbourhood profile update is to identify ongoing and emerging crime and disorder issues in the neighbourhood in order to facilitate effective policing and partnership working in the area.

Purpose

The purpose of the neighbourhood profile update is to provide up-to-date information on neighbourhood issues to multi-agency neighbourhood panels and neighbourhood policing teams, so that issues can be identified and effectively prioritised.

Methodology

This document was produced using the following data;

- Crime data, from September to November 2007 and as a comparison data from June to August 2007 and September to November 2006.
- Incident data, from September to November 2007 and as a comparison data from June to August 2007 and September to November 2006.
- Information from the Neighbourhood Policing teams, December 2007.
- Cambridge City Council, City Services data, September to November 2007.

2. Executive summary

Overall crime and disorder levels have decreased when compared to the same period last year, whilst crime has remained fairly stable compared to the preceding 3 months and ASB has decreased. Anti social behaviour and resulting crime in the Molewood and Hazelwood area of the Arbury ward has been the prevailing issue, whilst dwelling burglaries across the neighbourhood have also been high.

3. Previous issues identified and actions taken

Dwelling Burglary – Kings Hedges and Arbury Beats

- Significant resources have been deployed throughout the reporting period.
- Traditionally the Autumn period – clocks going back, early darkness, Xmas – sees a rise in dwelling burglary.
- Analysis has been regularly carried out to identify “hotspots”, “series” and offending patterns.
- Only one “series” of burglaries was identified and resources quickly focussed on addressing it.
- Two individuals selected as Divisional Targets.
- Dwelling burglary figures are down on previous years.
- Suspects were identified at an early stage.
- Intelligence has been gathered.
- Officers visited previous offenders on their releases from prison.
- High visibility patrol work carried out by officers and PCSOs in line with analysis/intelligence.
- Covert patrols (plain clothes) carried out.
- Stop checks, bail checks and arrests employed to suppress offending.
- Affected localities have been leafleted with warning/crime prevention advice and communication with the police advertised.

Youth related anti-social behaviour in the vicinity of Molewood/Hazelwood Close, associated with the Meadows Estate

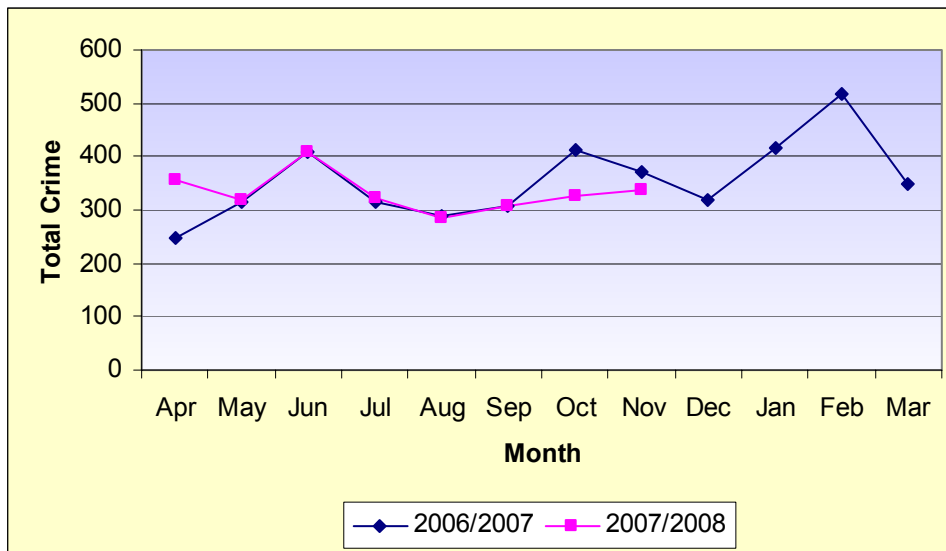
- Throughout the reporting period there has been regular public consultation, ultimately through public meetings held in the affected area. This has included an inaugural Residents’ Association meeting for Arbury Park.
- An ASBO was sought and achieved on one of the principle trouble-makers.
- Resources focussed on particular times, dates (Halloween/Bonfire Night) and areas.
- Multi-agency work with Housing, Council Departments and schools.
- Significant reduction in reported crime and anti-social behaviour on Halloween/Bonfire Night.
- Connections made between group committing ASB and burglary offences – two individuals selected as Divisional Targets.
- High visibility patrols by police officers and PCSOs.
- Regular use of stop/check.
- Evidence gathered for use in future/current ASBO work.
- Feedback that problem is much improved.

Youth anti-social behaviour and related crime in vicinity of Green Dragon Bridge/Water St/Green End Rd in East Chesterton

- There has been a significant reduction in these problems.
- Action against a group causing intimidation/harassment in a local pub, resulting in charges.
- Action with a Housing Association to evict a problem family.
- ASBO achieved against one of the principle trouble-makers.
- Bail checks, stop checks and arrests of trouble-makers with good effect.
- Engaging youths and their families with the criminal justice system and youth offending service.
- CCTV van employed as a deterrent.
- High visibility patrol work across East Chesterton.
- Focussed patrol work on key dates – Halloween/Bonfire Night.

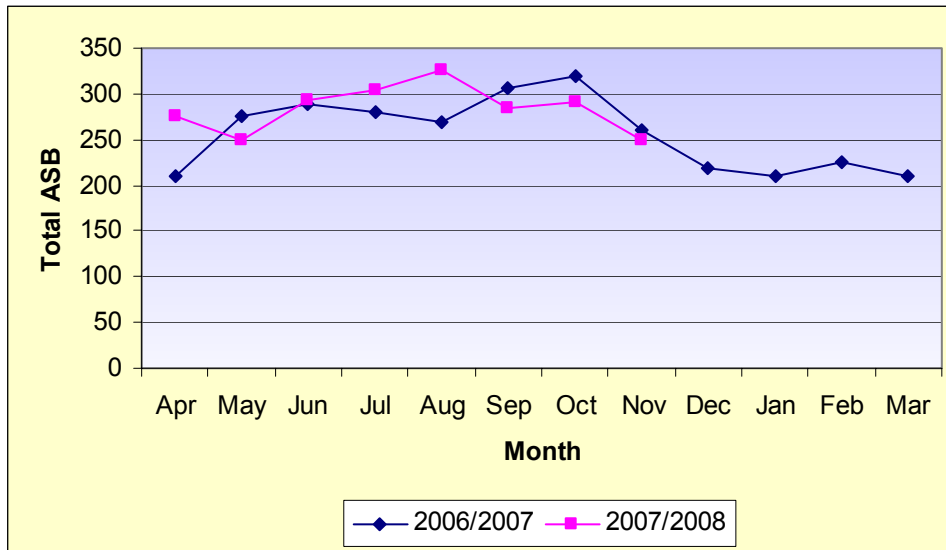
4. Neighbourhood trends in crime and disorder

Crimes by Month, City North Neighbourhood Area, April 2006 to November 2007



- Total crime has remained at a very similar level to the preceding 3 month period, and is considerably lower than during the same period in 2006.
- Specifically cycle crime figures are far lower than during the same period 2006, whilst theft from vehicle offences have fallen sharply in comparison to the preceding 3 month period.
- There has been an emergence of robberies, with 19 taking place during the period, most frequently occurring in the Kings Hedges and Arbury wards.

ASB incidents by month, City North Neighbourhood Area, April 2006 to November 2007



- ASB has followed a similar downwardly trend when compared to the 2006 and it is therefore expected that ASB will continue to decrease in the forthcoming months.
- ASB has decreased in all wards when compared to the preceding 3 month period.

5. Trends in crime and disorder by ward

West Chesterton

- Crime and disorder has been comparatively quiet in the ward, with 214 crimes and 147 ASB incidents reported over the 3 months, this is 99 fewer crimes and 105 fewer ASB incidents when compared to the same period in 2006.
- The most frequently occurring crime type was pedal cycle theft, however the number of cycles stolen was substantially fewer than during the same period in 2006.
- The council cleared up 6 items of graffiti in the ward during November.

East Chesterton

- Total crime has been high in the ward, with 242 offences taking place, however anti social behaviour has decreased, with only 198 incidents reported.
- Burglaries of both dwellings (18 offences) and non dwellings (17 offences) have increased during the period. The dwelling burglaries form part of an ongoing series in the North of the City.
- Theft from vehicle has also been high during the period, with 26 offences reported, half of which took place in November, particularly around Green End Road, Mortlock Avenue and Kendal Way.
- ASB has decreased in the ward, however there were still 108 incidents reported during the period of youths causing ASB. The hotspot for these

offences remained in the area of Green End Road, Kendal Way, Laxton Way and Cam Causeway, however this has been quieter than in previous periods.

Kings Hedges

- Overall crime and disorder have remained at a similar level to previous periods in the ward, with 248 crimes and 219 incidents reported.
- There has however been an increase in violent crime, with 60 offences reported. These were predominantly less serious in nature (common assault or other wounding) and were frequently domestic related, there were however also a number of acts of violence from strangers and there was also an increase in robberies of personal property (8 crimes).
- Theft from vehicle offences have decreased dramatically (14 offences) when compared to the previous 3 month period when 76 offences were reported.
- ASB has decreased when compared to the previous period, there has however been the emergence of a hotspot of youth related ASB at Arbury Court with 15 incidents reported.
- The council dealt with 101 fly tips in the Kings Hedges ward, Northfield Avenue was the biggest hotspot, with 16 incidents dealt with.
- There were 25 reports of abandoned vehicles dealt with by the council, of which 4 were removed and stored in a compound.

Arbury

- Total crime and disorder has been at a similar level when compared to previous periods, with 269 crimes and 259 ASB incidents.
- Robbery has been fairly high during the period, with 7 offences reported.
- Theft of vehicles has also been high during the 3 months, with 10 offences occurring.
- One hundred and fifteen of the ASB incidents were related to youths causing disorder. There remained a hotspot of ASB in the area of Hazelwood Close and Molewood Close, with 37 ASB incidents reported. These incidents included youths drinking, causing criminal damage and intimidating the public. A number of the youths named as being responsible for ASB in the area are also believed to be engaging in more serious crime.
- The council dealt with 113 fly tips during the period, with Hazelwood Close and Molewood Close were the biggest hotspot with 29 fly tips.
- Over a hundred needles were removed by the council from Histon Road Cemetery during October.
- There were 41 reports of abandoned vehicles dealt with by the council, of which 6 were removed and stored in a compound.

6. Recommendations

- Dwelling Burglary across the neighbourhood
- Robberies in Kings Hedges and Arbury
- ASB in the Molewood and Hazelwood area to continue as a priority and to include dealing with environmental health issues, such as fly tipping

7. Appendix

Appendix 1. Total Neighbourhood Crime by Ward

Ward	09/07 to 11/07	06/07 to 08/07	09/06 to 11/06
West Chesterton	214	305	313
East Chesterton	242	201	236
Kings Hedges	248	253	258
Arbury	269	259	285
Neighbourhood Total	973	1,018	1,092

Appendix 2. Total Neighbourhood Crime by Offence Type

Crime Type	09/07 to 11/07	06/07 to 08/07	09/06 to 11/06
Burglary Dwelling	86	79	105
Burglary Non Dwelling	45	35	66
Violent Crime	170	202	180
Robbery	19	11	19
Theft of Vehicle	26	22	35
Theft from Vehicle	67	139	56
Pedal Cycle Theft	134	98	196
Theft from Shop	34	28	27
Criminal Damage	177	150	218
Other Crime	234	265	209
Total Crime	973	1,018	1,092
Anti Social Behaviour	823	925	886

Appendix 3. West Chesterton Crime by Offence Type

Crime Type	09/07 to 11/07	06/07 to 08/07	09/06 to 11/06
Burglary Dwelling	16	20	32
Burglary Non Dwelling	8	3	26
Violent Crime	28	47	46
Robbery	2	1	6
Theft of Vehicle	6	8	7
Theft from Vehicle	16	28	14
Pedal Cycle Theft	41	44	74
Theft from Shop	13	13	13
Criminal Damage	32	41	48
Other Crime	54	101	53
Total Crime	214	305	313
Anti Social Behaviour	147	156	252

Appendix 4. East Chesterton Crime by Offence Type

Crime Type	09/07 to 11/07	06/07 to 08/07	09/06 to 11/06
Burglary Dwelling	18	15	14
Burglary Non Dwelling	17	5	17
Violent Crime	33	57	41
Robbery	2	2	2
Theft of Vehicle	6	2	12
Theft from Vehicle	26	16	19
Pedal Cycle Theft	37	27	38
Theft from Shop	4	2	4
Criminal Damage	49	34	46
Other Crime	52	43	45
Total Crime	242	201	236
Anti Social Behaviour	198	230	203

Appendix 5. Kings Hedges Crime by Offence Type

Crime Type	09/07 to 11/07	06/07 to 08/07	09/06 to 11/06
Burglary Dwelling	25	19	32
Burglary Non Dwelling	10	15	12
Violent Crime	60	47	48
Robbery	8	5	5
Theft of Vehicle	4	8	9
Theft from Vehicle	14	76	13
Pedal Cycle Theft	18	8	28
Theft from Shop	11	6	5
Criminal Damage	59	29	57
Other Crime	47	45	54
Total Crime	248	253	258
Anti Social Behaviour	219	236	211

Appendix 6. Arbury Crime by Offence Type

Crime Type	09/07 to 11/07	06/07 to 08/07	09/06 to 11/06
Burglary Dwelling	27	25	27
Burglary Non Dwelling	10	12	11
Violent Crime	49	51	45
Robbery	7	3	6
Theft of Vehicle	10	4	7
Theft from Vehicle	11	19	10
Pedal Cycle Theft	38	19	56
Theft from Shop	6	7	5
Criminal Damage	37	46	67
Other Crime	81	76	57
Total Crime	269	259	285
Anti Social Behaviour	259	303	220