

## 2011 Census QA Pack - Cambridge

### Census estimate of usual residents

	Cambridge	East of England	England & Wales
Census count of usual residents	113,600	5,560,800	52,638,800
<b>Census estimate of usual residents</b>	<b>123,900</b>	<b>5,847,000</b>	<b>56,075,900</b>

Source: Office for National Statistics

### Census estimate of households

	Cambridge	East of England	England & Wales
Household spaces occupied by at least one usual resident	46,700	2,423,000	23,366,000
CLG/StatsWales council tax	47,200	2,439,900	23,370,200

Source: Office for National Statistics, Communities and Local Government, StatsWales

### Components of the census estimate of usual residents

	Cambridge	East of England	England & Wales
Census Estimate for	123,900	5,847,000	56,075,900
of which:			
Count of usual residents	113,600	5,560,800	52,638,800
Change due to estimation and sample bias	8,400	252,200	2,804,800
Change due to overcount adjustment	-500	-25,500	-352,000
Change due to bias adjustment	700	33,600	583,000
Change due to national adjustment	400	19,000	303,400
Change due to CE adjustment	1,200	6,900	97,900

Source: Office for National Statistics

For information on the components of the census estimate please see the Explanatory Materials on the previous page

2011 Census QA Pack - Cambridge

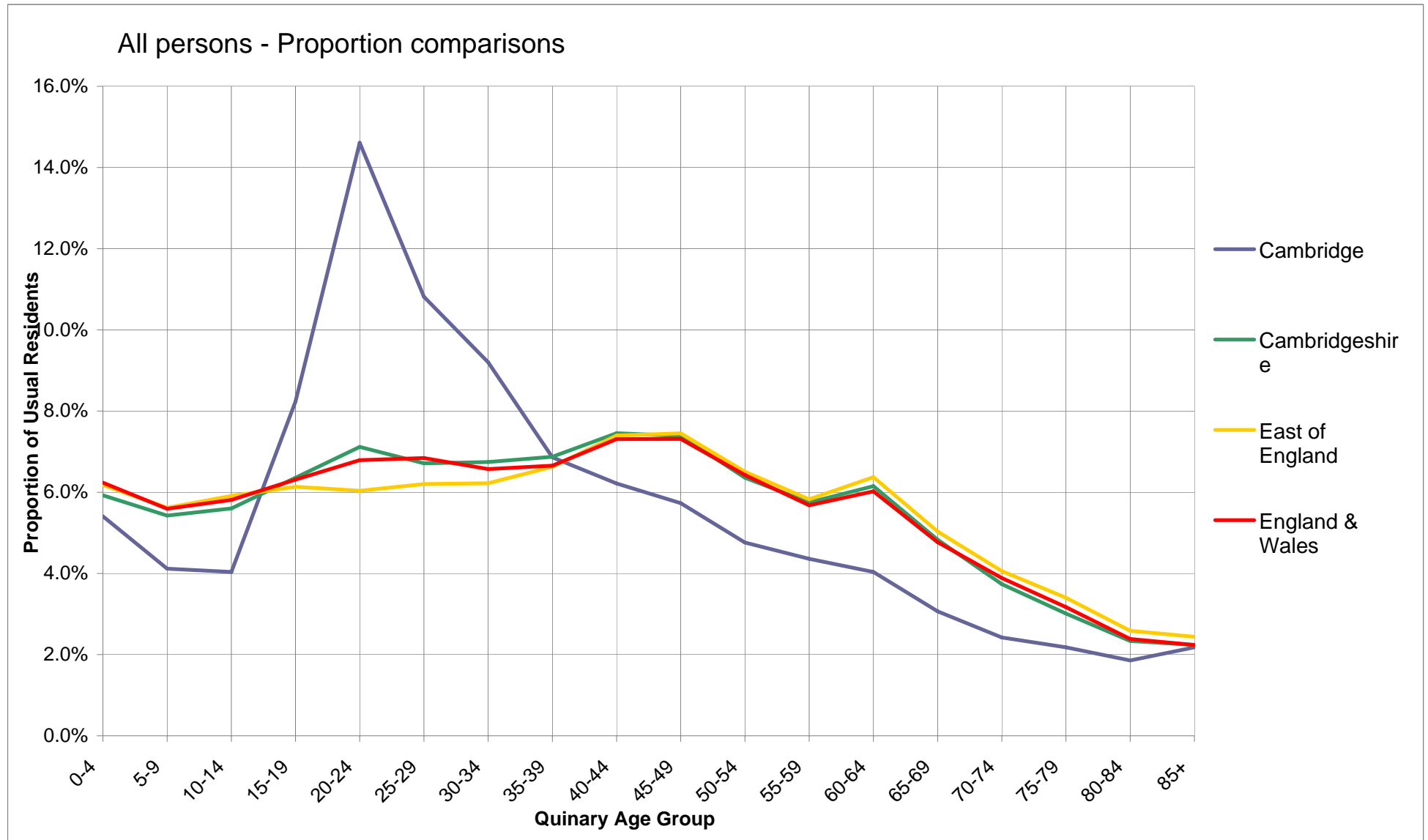
Age-sex population proportions for LA, county (where applicable), Region and England and Wales

All persons - Proportion comparisons

Age	Cambridge	Cambridgeshire	East of England	England & Wales
0-4	5.4%	5.9%	6.2%	6.2%
5-9	4.1%	5.4%	5.6%	5.6%
10-14	4.0%	5.6%	5.9%	5.8%
15-19	8.2%	6.4%	6.1%	6.3%
20-24	14.6%	7.1%	6.0%	6.8%
25-29	10.8%	6.7%	6.2%	6.8%
30-34	9.2%	6.7%	6.2%	6.6%
35-39	6.9%	6.9%	6.6%	6.7%
40-44	6.2%	7.5%	7.4%	7.3%
45-49	5.7%	7.4%	7.5%	7.3%
50-54	4.8%	6.4%	6.5%	6.4%
55-59	4.4%	5.7%	5.8%	5.7%
60-64	4.0%	6.1%	6.4%	6.0%
65-69	3.1%	4.8%	5.0%	4.8%
70-74	2.4%	3.7%	4.1%	3.9%
75-79	2.2%	3.0%	3.4%	3.2%
80-84	1.9%	2.3%	2.6%	2.4%
85+	2.2%	2.2%	2.4%	2.2%
<b>Total</b>	<b>123,900</b>	<b>621,200</b>	<b>5,847,000</b>	<b>56,075,900</b>

Source: Office for National Statistics

<sup>1</sup> "Not Applicable" displayed when selected Local Authority is not part of an administrative county



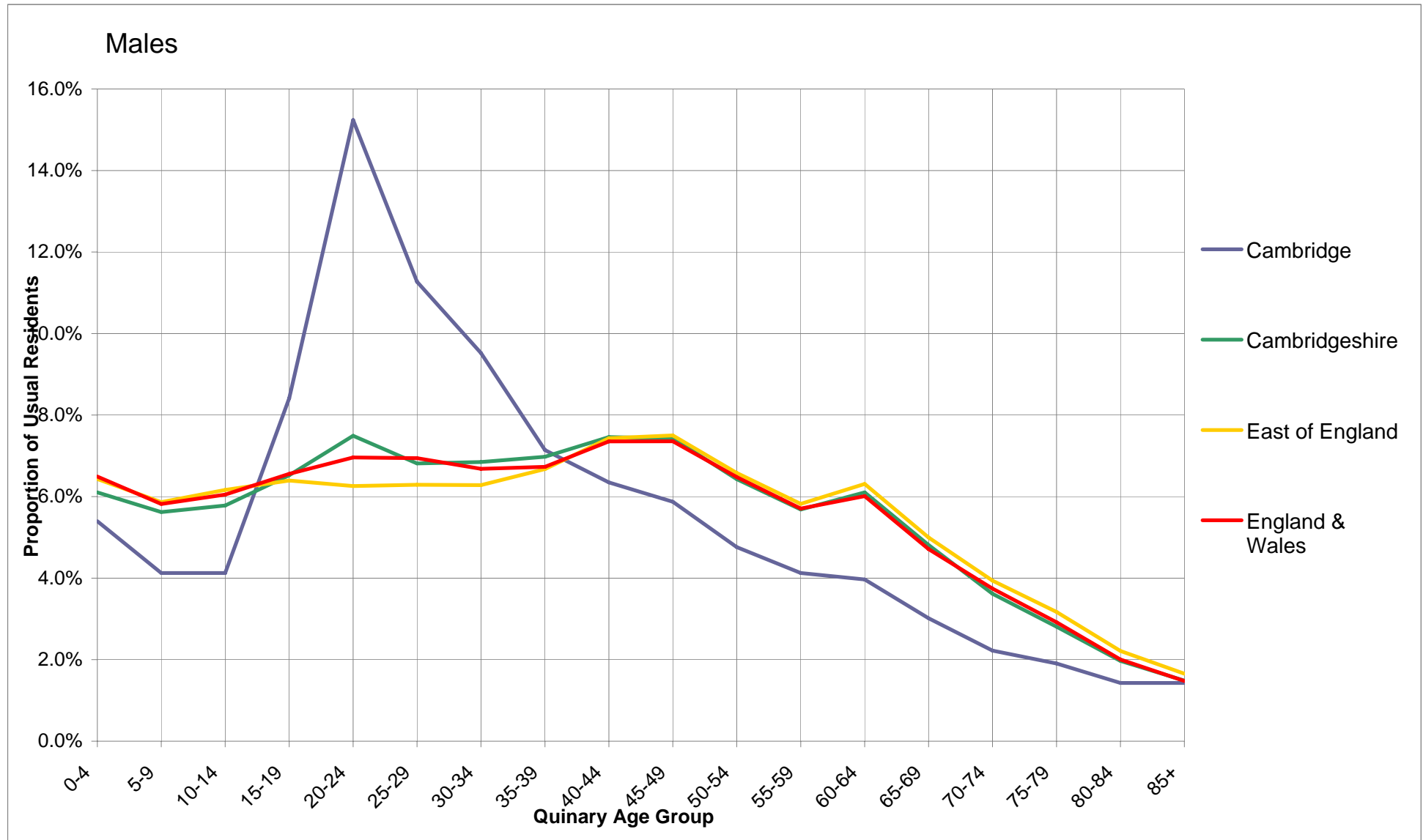
2011 Census QA Pack - Cambridge

Males - Proportion comparisons

Age	Cambridge	Cambridgeshire	East of England	England & Wales
0-4	5.4%	6.1%	6.4%	6.5%
5-9	4.1%	5.6%	5.9%	5.8%
10-14	4.1%	5.8%	6.2%	6.1%
15-19	8.4%	6.5%	6.4%	6.6%
20-24	15.2%	7.5%	6.3%	7.0%
25-29	11.3%	6.8%	6.3%	6.9%
30-34	9.5%	6.8%	6.3%	6.7%
35-39	7.1%	7.0%	6.7%	6.7%
40-44	6.3%	7.5%	7.4%	7.4%
45-49	5.9%	7.4%	7.5%	7.4%
50-54	4.8%	6.4%	6.6%	6.5%
55-59	4.1%	5.7%	5.8%	5.7%
60-64	4.0%	6.1%	6.3%	6.0%
65-69	3.0%	4.8%	5.0%	4.7%
70-74	2.2%	3.6%	3.9%	3.7%
75-79	1.9%	2.8%	3.2%	2.9%
80-84	1.4%	2.0%	2.2%	2.0%
85+	1.4%	1.5%	1.7%	1.5%
<b>Total</b>	<b>63,000</b>	<b>309,600</b>	<b>2,875,800</b>	<b>27,573,400</b>

Source: Office for National Statistics

<sup>1</sup> "Not Applicable" displayed when selected Local Authority is not part of an administrative county



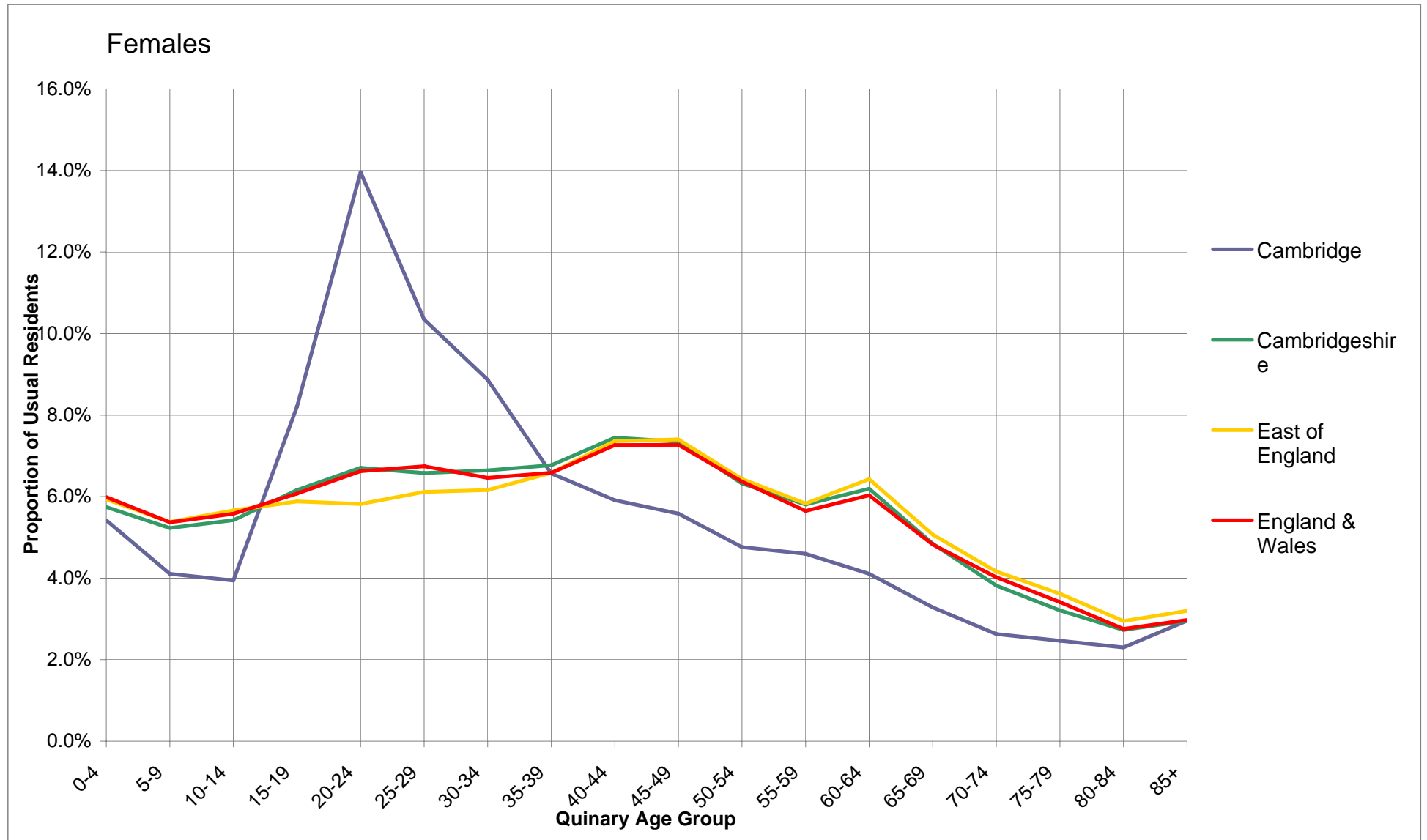
2011 Census QA Pack - Cambridge

Females - Proportion comparisons

Age	Cambridge	Cambridgeshire	East of England	England & Wales
0-4	5.4%	5.7%	5.9%	6.0%
5-9	4.1%	5.2%	5.4%	5.4%
10-14	3.9%	5.4%	5.7%	5.6%
15-19	8.2%	6.2%	5.9%	6.1%
20-24	14.0%	6.7%	5.8%	6.6%
25-29	10.3%	6.6%	6.1%	6.7%
30-34	8.9%	6.6%	6.2%	6.5%
35-39	6.6%	6.8%	6.6%	6.6%
40-44	5.9%	7.4%	7.4%	7.3%
45-49	5.6%	7.3%	7.4%	7.3%
50-54	4.8%	6.3%	6.4%	6.4%
55-59	4.6%	5.8%	5.8%	5.6%
60-64	4.1%	6.2%	6.4%	6.0%
65-69	3.3%	4.8%	5.1%	4.8%
70-74	2.6%	3.8%	4.2%	4.0%
75-79	2.5%	3.2%	3.6%	3.4%
80-84	2.3%	2.7%	2.9%	2.8%
85+	3.0%	3.0%	3.2%	3.0%
<b>Total</b>	<b>60,900</b>	<b>311,600</b>	<b>2,971,100</b>	<b>28,502,500</b>

Source: Office for National Statistics

<sup>1</sup> "Not Applicable" displayed when selected Local Authority is not part of an administrative county



## 2011 Census QA Pack - Cambridge

Age-sex population distributions for all persons, males and females with sex ratios

### All persons - Cambridge

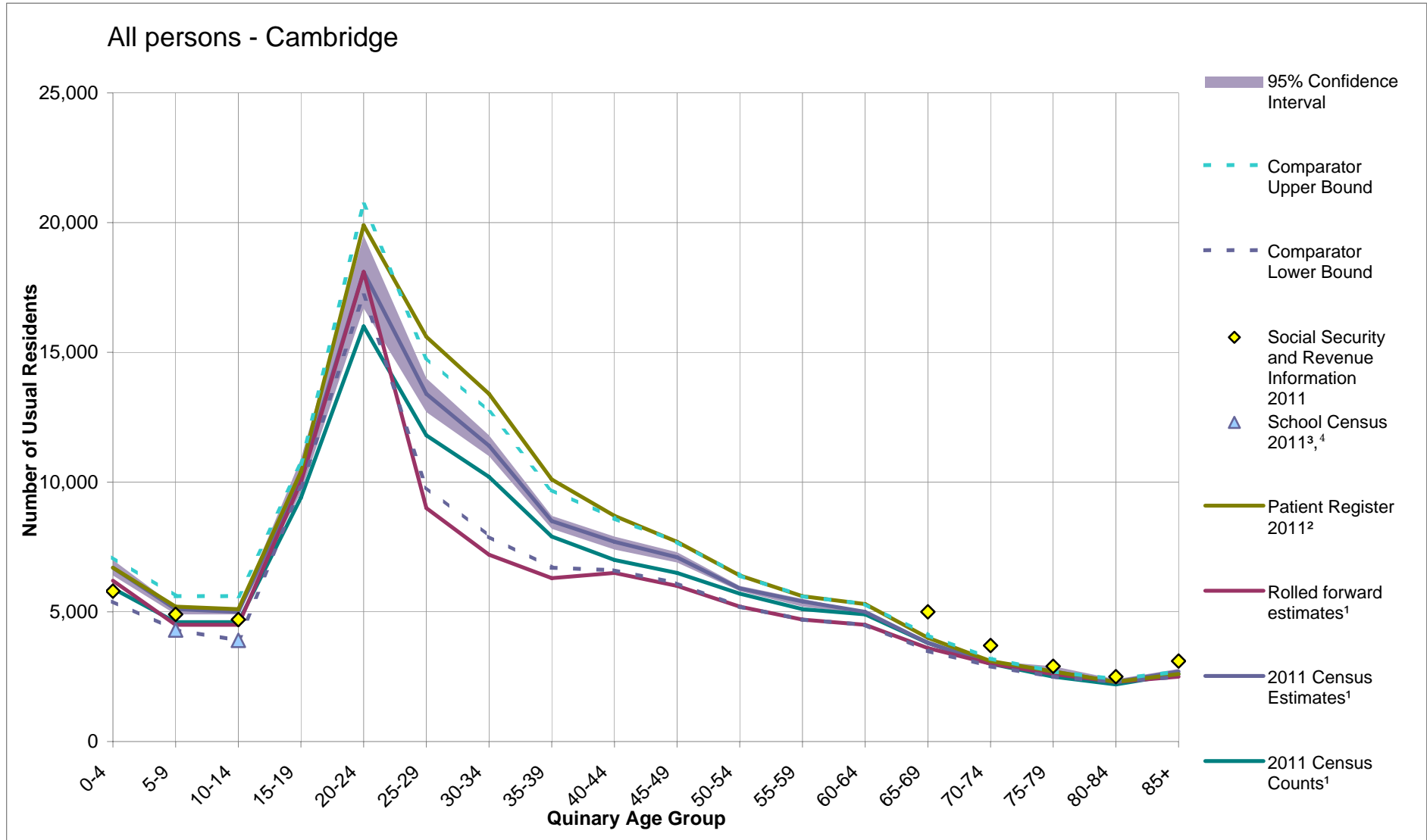
Age	2011 Census Counts <sup>1</sup>	2011 Census Estimates <sup>1</sup>	Lower 95% Confidence Interval	Upper 95% Confidence Interval	Rolled forward estimates <sup>1</sup>	Patient Register 2011 <sup>2</sup>	School Census 2011 <sup>3,4</sup>	Social Security and Revenue Information 2011 <sup>5</sup>	Comparator Lower Bound	Comparator Upper Bound	Response Rates
0-4	5,900	6,700	6,400	7,000	6,200	6,700		5,800	5,400	7,100	89%
5-9	4,600	5,100	4,900	5,200	4,500	5,200	4,300	4,900	4,300	5,600	91%
10-14	4,600	5,000	4,900	5,100	4,500	5,100	3,900	4,700	3,900	5,600	92%
15-19	9,400	10,200	9,600	10,900	10,000	10,400			9,800	10,700	92%
20-24	16,000	18,100	16,700	19,500	18,100	19,900			17,200	20,700	88%
25-29	11,800	13,400	12,700	14,000	9,000	15,600			9,800	14,800	88%
30-34	10,200	11,400	11,000	11,800	7,200	13,400			7,900	12,700	90%
35-39	7,900	8,500	8,200	8,700	6,300	10,100			6,700	9,700	93%
40-44	7,000	7,700	7,400	7,900	6,500	8,700			6,600	8,600	92%
45-49	6,500	7,100	6,900	7,300	6,000	7,700			6,100	7,700	92%
50-54	5,700	5,900	5,800	6,000	5,200	6,400			5,200	6,400	96%
55-59	5,100	5,400	5,200	5,500	4,700	5,600			4,700	5,600	95%
60-64	4,900	5,000	4,900	5,000	4,500	5,300			4,500	5,300	98%
65-69	3,800	3,800	3,800	3,900	3,600	4,000		5,000	3,500	4,100	98%
70-74	3,000	3,000	3,000	3,100	3,000	3,100		3,700	2,900	3,200	98%
75-79	2,500	2,700	2,600	2,900	2,600	2,700		2,900	2,500	2,700	93%
80-84	2,200	2,300	2,200	2,400	2,300	2,300		2,500	2,300	2,400	95%
85+	2,600	2,700	2,600	2,800	2,500	2,600		3,100	2,500	2,700	95%
<b>Total</b>	<b>113,600</b>	<b>123,900</b>	<b>121,500</b>	<b>126,200</b>	<b>106,800</b>	<b>134,900</b>	<b>8,200</b>	<b>32,600</b>			<b>92%</b>

Source: Office for National Statistics<sup>1</sup>, National Health Service Information Centre<sup>2</sup>, Department for Education<sup>3</sup>, Welsh Government<sup>4</sup>,

Department for Work and Pensions/Her Majesty's Revenue and Customs

Descriptive metadata for tables in this pack is provided on previous pages - Descriptive metadata for terms used -





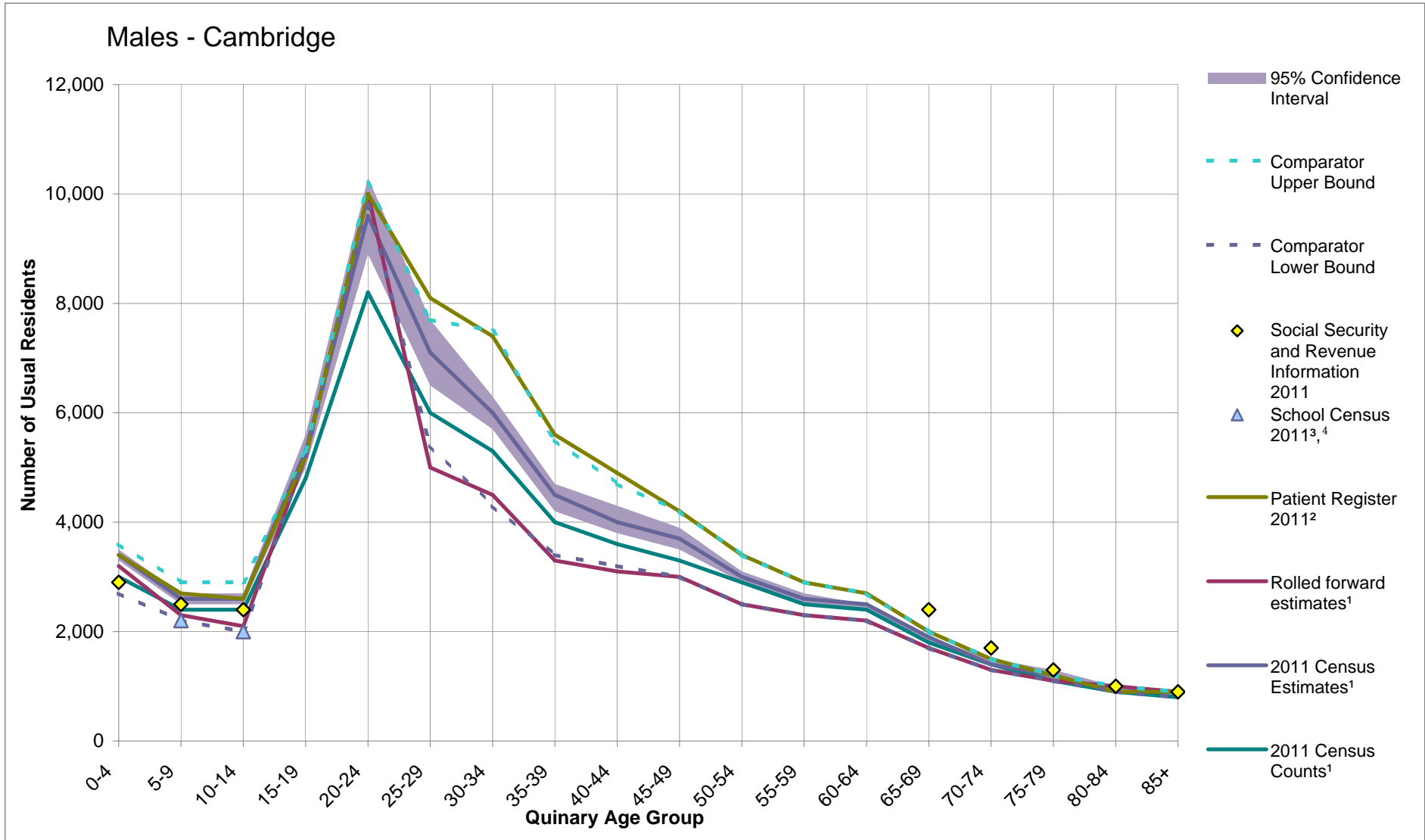
2011 Census QA Pack - Cambridge

Males - Cambridge

Age	2011 Census Counts <sup>1</sup>	2011 Census Estimates <sup>1</sup>	Lower 95% Confidence Interval	Upper 95% Confidence Interval	Rolled forward estimates <sup>1</sup>	Patient Register 2011 <sup>2</sup>	School Census 2011 <sup>3,4</sup>	Social Security and Revenue Information 2011 <sup>5</sup>	Comparator Lower Bound	Comparator Upper Bound	Response Rates
0-4	3,000	3,400	3,300	3,500	3,200	3,400		2,900	2,700	3,600	89%
5-9	2,400	2,600	2,500	2,700	2,300	2,700	2,200	2,500	2,200	2,900	91%
10-14	2,400	2,600	2,500	2,700	2,100	2,600	2,000	2,400	2,000	2,900	93%
15-19	4,800	5,300	5,000	5,600	5,200	5,200			5,200	5,300	91%
20-24	8,200	9,600	8,900	10,300	10,000	10,000			9,800	10,200	85%
25-29	6,000	7,100	6,500	7,700	5,000	8,100			5,400	7,700	85%
30-34	5,300	6,000	5,700	6,300	4,500	7,400			4,300	7,500	89%
35-39	4,000	4,500	4,200	4,700	3,300	5,600			3,400	5,500	90%
40-44	3,600	4,000	3,800	4,300	3,100	4,900			3,200	4,700	88%
45-49	3,300	3,700	3,500	3,900	3,000	4,200			3,000	4,200	88%
50-54	2,900	3,000	2,900	3,100	2,500	3,400			2,500	3,400	96%
55-59	2,500	2,600	2,500	2,700	2,300	2,900			2,300	2,900	96%
60-64	2,400	2,500	2,400	2,500	2,200	2,700			2,200	2,700	96%
65-69	1,800	1,900	1,800	1,900	1,700	2,000		2,400	1,700	2,000	97%
70-74	1,400	1,400	1,400	1,500	1,300	1,500		1,700	1,300	1,500	97%
75-79	1,100	1,200	1,100	1,300	1,100	1,200		1,300	1,100	1,200	94%
80-84	900	900	900	1,000	1,000	900		1,000	900	1,000	96%
85+	800	900	800	900	900	900		900	800	900	95%
<b>Total</b>	<b>56,700</b>	<b>63,000</b>	<b>61,700</b>	<b>64,300</b>	<b>54,600</b>	<b>69,500</b>	<b>4,200</b>	<b>15,100</b>			<b>90%</b>

Source: Office for National Statistics<sup>1</sup>, National Health Service Information Centre<sup>2</sup>, Department for Education<sup>3</sup>, Welsh Government<sup>4</sup>, Department for Work and Pensions/Her Majesty's Revenue and Customs

Descriptive metadata for tables in this pack is provided on previous pages - Descriptive metadata for terms used -



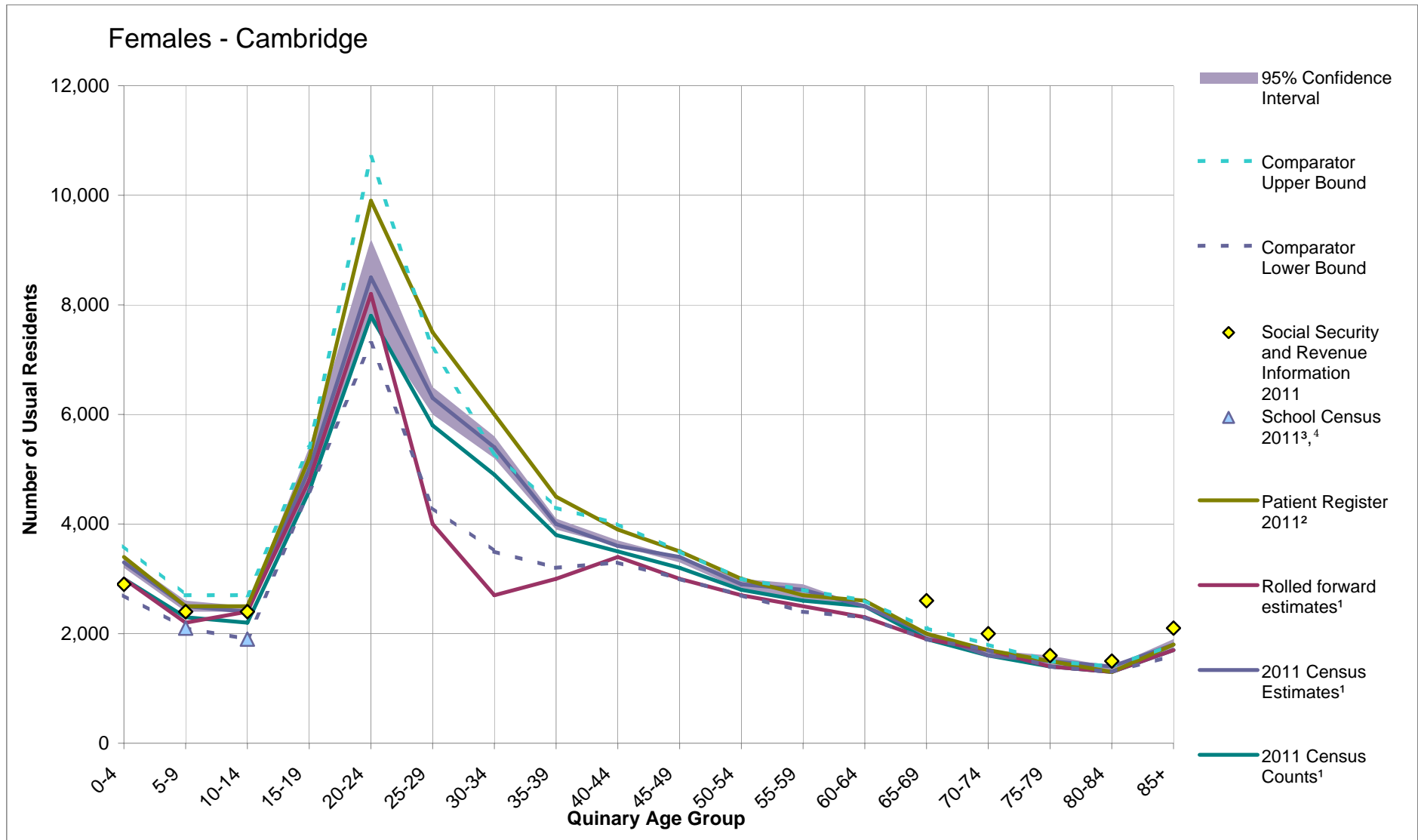
2011 Census QA Pack - Cambridge

Females - Cambridge

Age	2011 Census Counts <sup>1</sup>	2011 Census Estimates <sup>1</sup>	Lower 95% Confidence Interval	Upper 95% Confidence Interval	Rolled forward estimates <sup>1</sup>	Patient Register 2011 <sup>2</sup>	School Census 2011 <sup>3,4</sup>	Social Security and Revenue Information 2011 <sup>5</sup>	Comparator Lower Bound	Comparator Upper Bound	Response Rates
0-4	3,000	3,300	3,200	3,400	3,000	3,400		2,900	2,700	3,600	89%
5-9	2,300	2,500	2,400	2,600	2,200	2,500	2,100	2,400	2,100	2,700	91%
10-14	2,200	2,400	2,400	2,500	2,400	2,500	1,900	2,400	1,900	2,700	92%
15-19	4,600	5,000	4,600	5,400	4,800	5,200			4,600	5,400	93%
20-24	7,800	8,500	7,700	9,200	8,200	9,900			7,300	10,700	92%
25-29	5,800	6,300	6,000	6,500	4,000	7,500			4,300	7,200	92%
30-34	4,900	5,400	5,200	5,600	2,700	6,000			3,500	5,300	91%
35-39	3,800	4,000	3,900	4,100	3,000	4,500			3,200	4,300	96%
40-44	3,500	3,600	3,600	3,700	3,400	3,900			3,300	4,000	96%
45-49	3,200	3,400	3,300	3,400	3,000	3,500			3,000	3,500	96%
50-54	2,800	2,900	2,800	3,000	2,700	3,000			2,700	3,000	95%
55-59	2,600	2,800	2,600	2,900	2,500	2,700			2,400	2,800	94%
60-64	2,500	2,500	2,500	2,500	2,300	2,600			2,300	2,600	100%
65-69	1,900	2,000	1,900	2,000	1,900	2,000		2,600	1,900	2,100	99%
70-74	1,600	1,600	1,600	1,700	1,700	1,700		2,000	1,700	1,800	99%
75-79	1,400	1,500	1,400	1,600	1,400	1,500		1,600	1,400	1,500	92%
80-84	1,300	1,400	1,300	1,400	1,300	1,300		1,500	1,300	1,400	95%
85+	1,700	1,800	1,700	1,900	1,700	1,800		2,100	1,600	1,800	95%
<b>Total</b>	<b>56,900</b>	<b>60,900</b>	<b>59,600</b>	<b>62,200</b>	<b>52,300</b>	<b>65,400</b>	<b>4,000</b>	<b>17,500</b>			<b>94%</b>

Source: Office for National Statistics<sup>1</sup>, National Health Service Information Centre<sup>2</sup>, Department for Education<sup>3</sup>, Welsh Government<sup>4</sup>, Department for Work and Pensions/Her Majesty's Revenue and Customs

Descriptive metadata for tables in this pack is provided on previous pages - Descriptive metadata for terms used -



## 2011 Census QA Pack - Cambridge

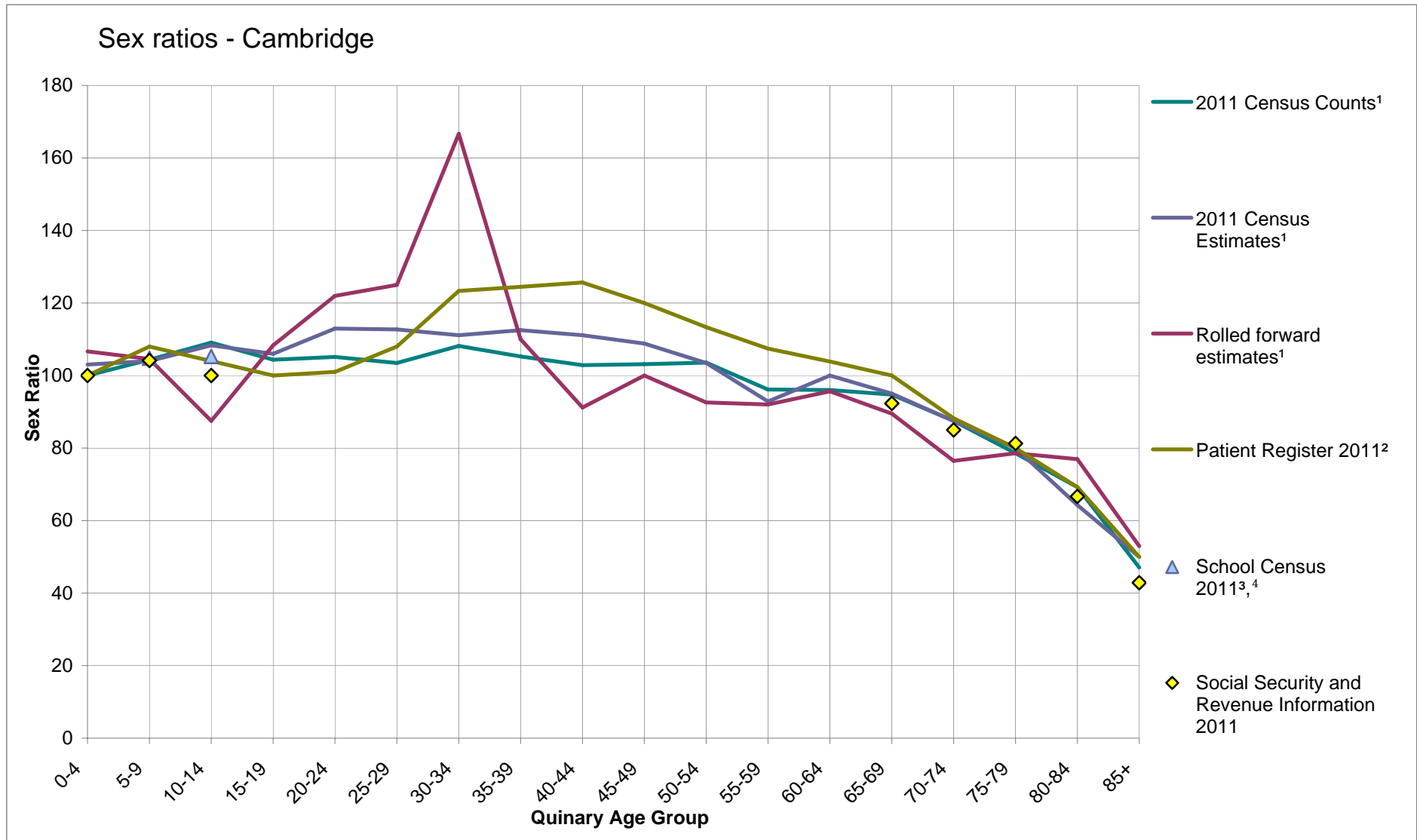
### Sex ratios - Cambridge

Defined as the number of males per 100 females

Age	2011 Census Counts <sup>1</sup>	2011 Census Estimates <sup>1</sup>	Rolled forward estimates <sup>1</sup>	Patient Register 2011 <sup>2</sup>	School Census 2011 <sup>3,4</sup>	Social Security and Revenue Information 2011 <sup>5</sup>
0-4	100	103	107	100		100
5-9	104	104	105	108	105	104
10-14	109	108	88	104	105	100
15-19	104	106	108	100		
20-24	105	113	122	101		
25-29	103	113	125	108		
30-34	108	111	167	123		
35-39	105	113	110	124		
40-44	103	111	91	126		
45-49	103	109	100	120		
50-54	104	103	93	113		
55-59	96	93	92	107		
60-64	96	100	96	104		
65-69	95	95	89	100		92
70-74	88	88	76	88		85
75-79	79	80	79	80		81
80-84	69	64	77	69		67
85+	47	50	53	50		43

Source: Office for National Statistics<sup>1</sup>, National Health Service Information Centre<sup>2</sup>, Department for Education<sup>3</sup>, Welsh Government<sup>4</sup>, Department for Work and Pensions/Her Majesty's Revenue and Customs

Descriptive metadata for tables in this pack is provided on previous pages - Descriptive metadata for terms used -



2011 Census QA Pack - Cambridge

Short-term UK residents - Cambridge

All Persons	3,300
Males	1,700
Females	1,600

Source: Office for National Statistics

Regional totals of short-term UK residents by sex and broad age

Age	North East	North West	Yorkshire and The Humber	East Midlands	West Midlands	East of England	London	South East	South West	Wales	England & Wales
<b>All Persons</b>											
0-14	300	1,000	1,000	600	900	1,200	3,700	2,200	1,000	500	12,500
15-24	4,100	8,600	7,900	6,300	8,200	7,300	28,900	13,500	6,100	3,800	94,600
25-44	1,900	5,200	4,300	3,500	5,100	5,600	28,300	9,600	3,500	2,400	69,500
45-64	200	800	600	600	800	1,200	5,600	2,000	700	400	12,900
65+	100	300	200	200	300	500	2,500	1,200	200	100	5,600
<b>Males</b>											
0-14	200	500	500	300	500	600	1,800	1,100	500	300	6,400
15-24	2,100	4,200	3,600	2,800	4,100	3,500	13,000	5,700	2,600	2,000	43,600
25-44	1,200	3,200	2,400	2,000	3,000	3,200	15,600	5,100	1,900	1,500	39,200
45-64	100	300	200	300	300	400	2,400	800	200	100	5,200
65+	0	100	100	100	100	200	1,100	400	100	0	2,300
<b>Females</b>											
0-14	200	500	500	300	400	600	1,800	1,100	500	200	6,100
15-24	2,000	4,400	4,400	3,400	4,100	3,800	15,900	7,800	3,400	1,800	51,000
25-44	700	2,000	1,900	1,500	2,100	2,400	12,700	4,400	1,600	900	30,300
45-64	100	500	400	400	400	800	3,200	1,300	400	200	7,700
65+	100	200	100	100	200	300	1,400	700	100	100	3,300

Source: Office for National Statistics

Please note that numbers may not add up to displayed totals due to rounding